



7300 SANTA FE DRIVE
HODGKINS, IL 60525

AVAILABLE FOR LEASE
FOOD GRADE INDUSTRIAL FACILITY

46,250 SF

PROPERTY HIGHLIGHTS

SPACE AVAILABLE:

46,250 SF

BUILT:

1979

OFFICE:

2,560 SF

BUILDING TYPE:

Food grade and rail- served warehouse

COOLER (OPTIONAL):

8,800 SF of flex cooler, $\pm 40^{\circ}$

TRUCK LOADING:

Seven (7) dock doors

CEILING HEIGHTS:

22' clear

COLUMN SPACING:

40' x 40'

POWER:

480V/277V/3P/4W

Supplied by ComEd

LIGHTING:

LED motion sensor

RAIL:

BNSF with nine (9) rail doors

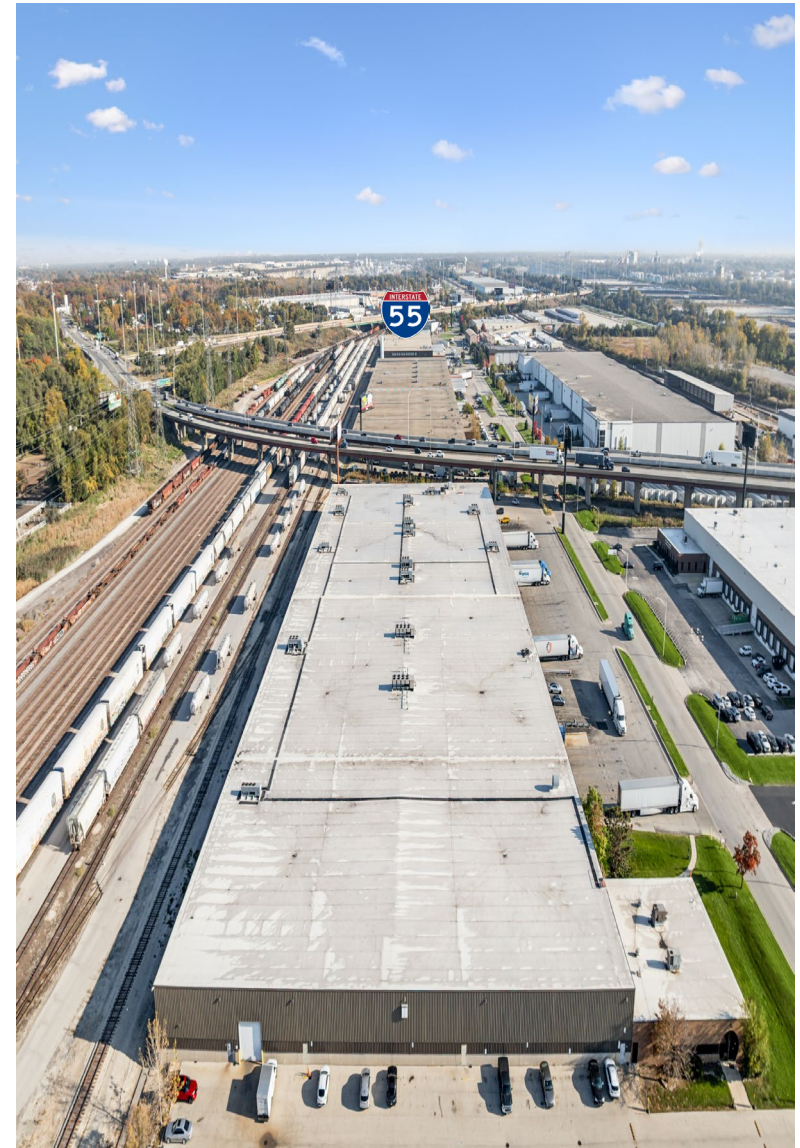
Ask for availability

PARKING:

± 66 employee spaces

2024 TAXES:

\$1.60/SF

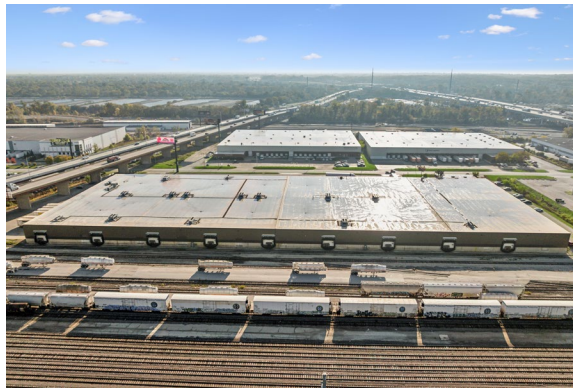


**Owner willing to assist with any 3PL operations in dry or cooler section.*

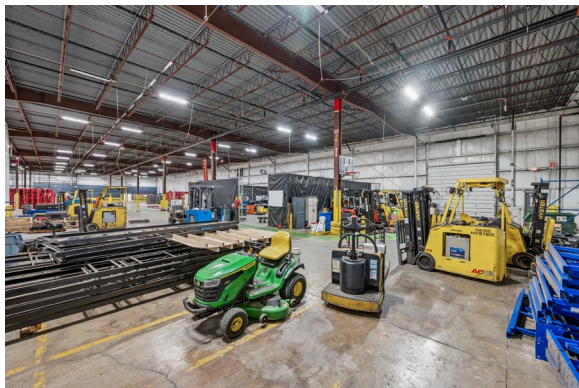
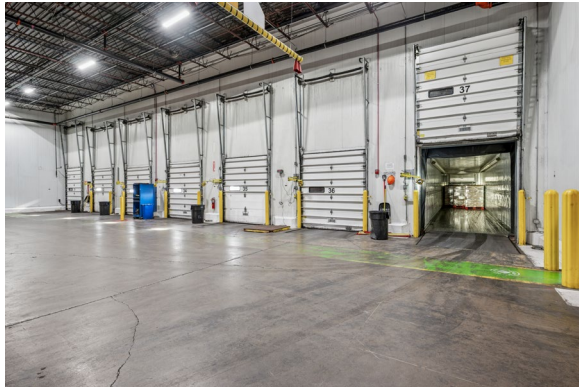
SITE PLAN



EXTERIOR PHOTOS



INTERIOR PHOTOS



LOCATION MAP



CONTACT



Zach Binswanger

President, Binswanger International

312.655.9526 | Office

215.919.0724 | Mobile

zbinswanger@binswanger.com



Brooke Oldt

Senior Vice President of Corporate Services

610.547.1120

boldt@binswanger.com



145 South Wells Street
Suite 1400
Chicago, IL 60606
Phone: 312.655.9526
binswanger.com

The information contained herein is from sources deemed reliable, but no warranty or representation is made as to the accuracy thereof and no liability may be imposed.