



**FLEX/INDUSTRIAL/
RETAIL FOR LEASE**

**DRANSFELDT FLEX/WAREHOUSE CONDOS
10206, 10218 PROGRESS LANE
PARKER, CO 80134**

- HIGHLIGHTS**
- Industrial Condo Complex
 - Variety of businesses in the Complex
 - Private Entrances
 - Individual hvac units
 - Overhead doors (some units)
 - Surface and street parking

LEASE RATE

Retail Exposure!

Unit 10206
1,000 square feet (approx.)
\$2,250.00/Month

Available August 1st - please do not disturb tenant

Unit 10218
800 square feet (approx.)
\$1,750.00/Month

Gross Rents + Utilities

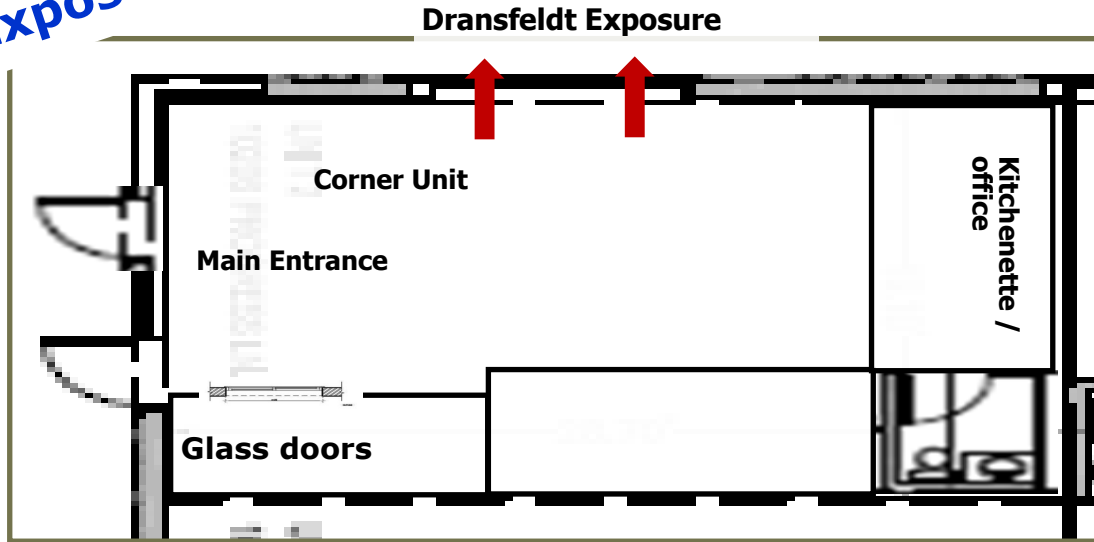
FOR MORE INFORMATION, PLEASE CALL:
John V. Propp, CCIM - 303-692-1816
John@JohnProppCommercial.com
6020 Greenwood Plaza Blvd., Suite 100
Greenwood Village, CO 80111
learn more at www.JohnProppCommercial.com



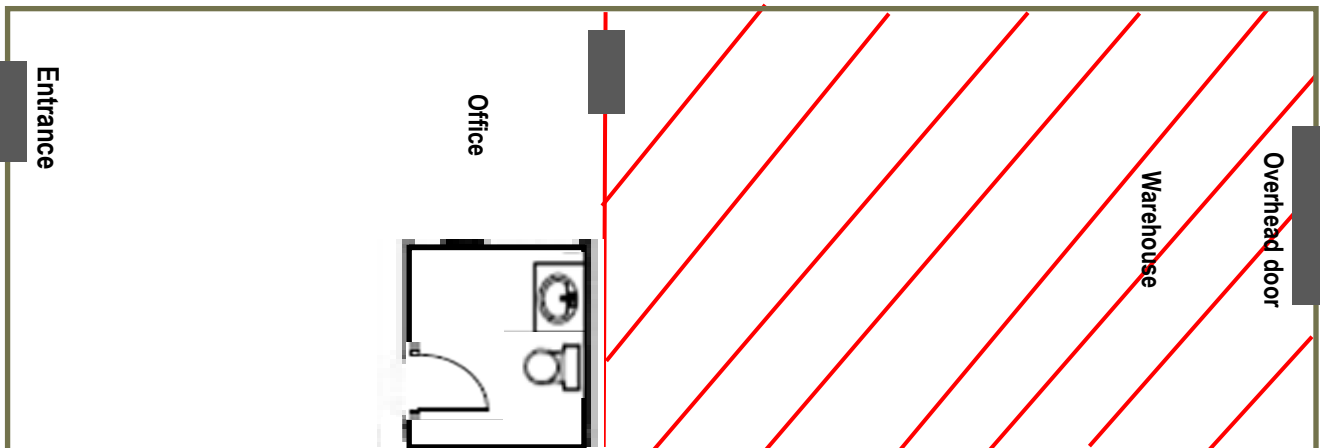
**DRANSFELDT FLEX/WAREHOUSE CONDOS
10206, 10218 PROGRESS LANE
PARKER, CO 80134**

10206 Progress Lane—\$2,250.00/Month

Retail Exposure!



10218 Progress Lane—\$1,750.00/Month



No warranty or representation is made as to the accuracy of the foregoing information. Terms of sale or lease and availability are subject to change or withdrawal without notice.