

21612 88TH AVENUE S.
KENT, WASHINGTON

KENT EAST CORPORATE PARK

BUILDING E



FOR LEASE
106, 276 SF
AVAILABLE NOW

CBRE



PROPERTY FEATURES



Nice Corporate Image



Ample Parking



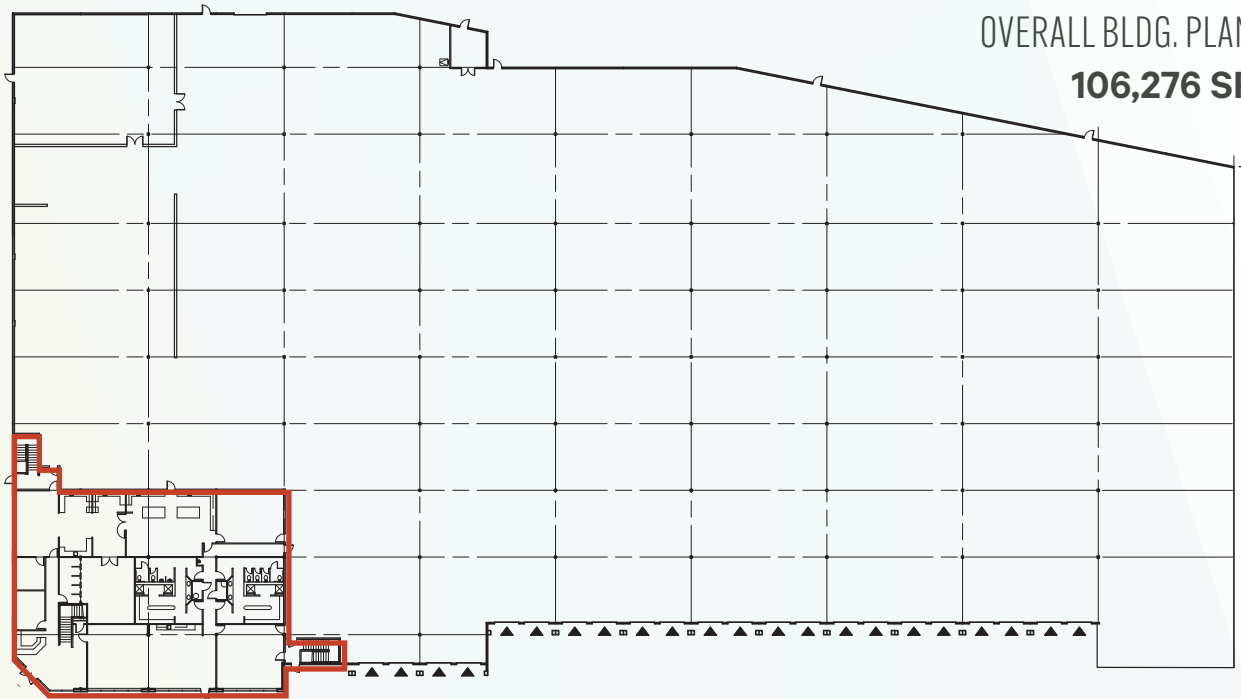
Great North Kent
Valley Location



Easy access to I-5
and Hwy-167

FLOOR PLAN

OVERALL BLDG. PLAN
106,276 SF



BUILDING FEATURES

SQUARE FOOTAGE:

TOTAL SF: 106,276

OFFICE SF: 16,129

1ST FLOOR OFFICE SPACE: 8,027 SF

2ND FLOOR OFFICE SPACE: 8,102 SF



Stand Alone Building



24' Clear Height



22 Dock Doors/
2 Grade Level Doors

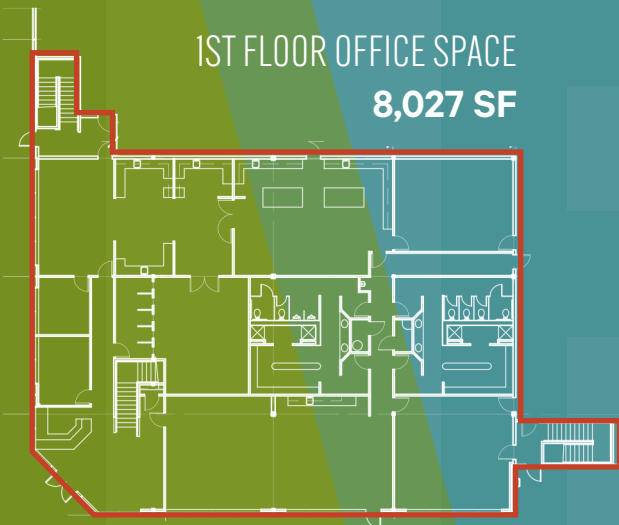


Available Now

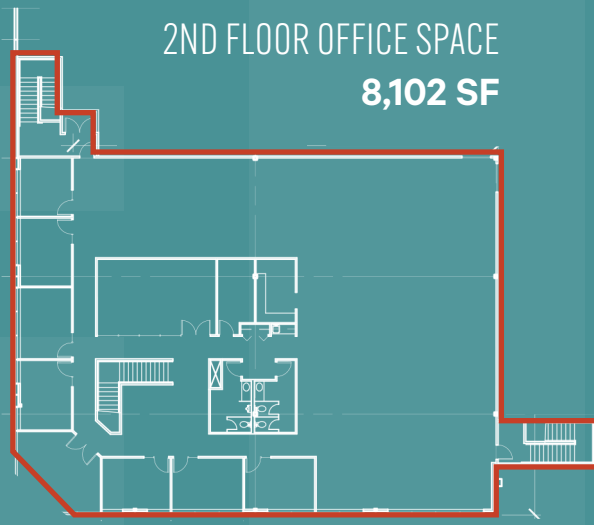


Potential to fence and secure the whole building

1ST FLOOR OFFICE SPACE
8,027 SF



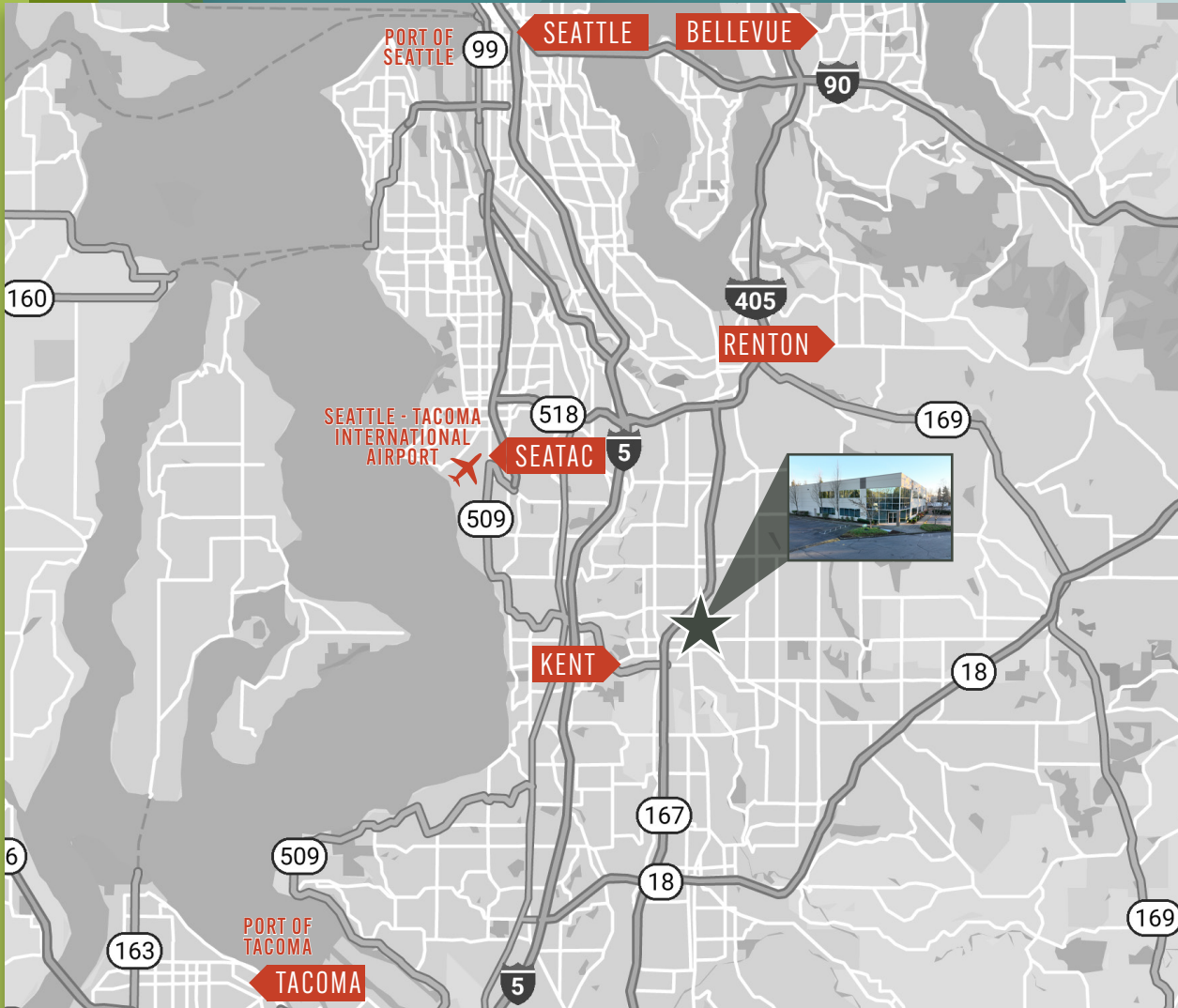
2ND FLOOR OFFICE SPACE
8,102 SF



KENT EAST CORPORATE PARK

BUILDING E

21612 88TH AVENUE S.
KENT, WASHINGTON



JOHN GILLILAND
SENIOR VICE PRESIDENT
+1 206 442 2745
john.gilliland@cbre.com

ANDREW STARK
EXECUTIVE VICE PRESIDENT
+1 206 442 2746
andrew.stark@cbre.com

ASKING RATES:
Call brokers for Rates

© 2022 CBRE, Inc. All rights reserved. This information has been obtained from sources believed reliable, but has not been verified for accuracy or completeness. You should conduct a careful, independent investigation of the property and verify all information. Any reliance on this information is solely at your own risk. CBRE and the CBRE logo are service marks of CBRE, Inc. All other marks displayed on this document are the property of their respective owners, and the use of such logos does not imply any affiliation with or endorsement of CBRE. Photos herein are the property of their respective owners. Use of these images without the express written consent of the owner is prohibited. MK_APRIL2024

CBRE