



# For Lease

**1967 Queen Street E, Toronto, ON**

Prime Retail Available in the Heart of the Beach



**CLICK HERE FOR  
A VIRTUAL TOUR**



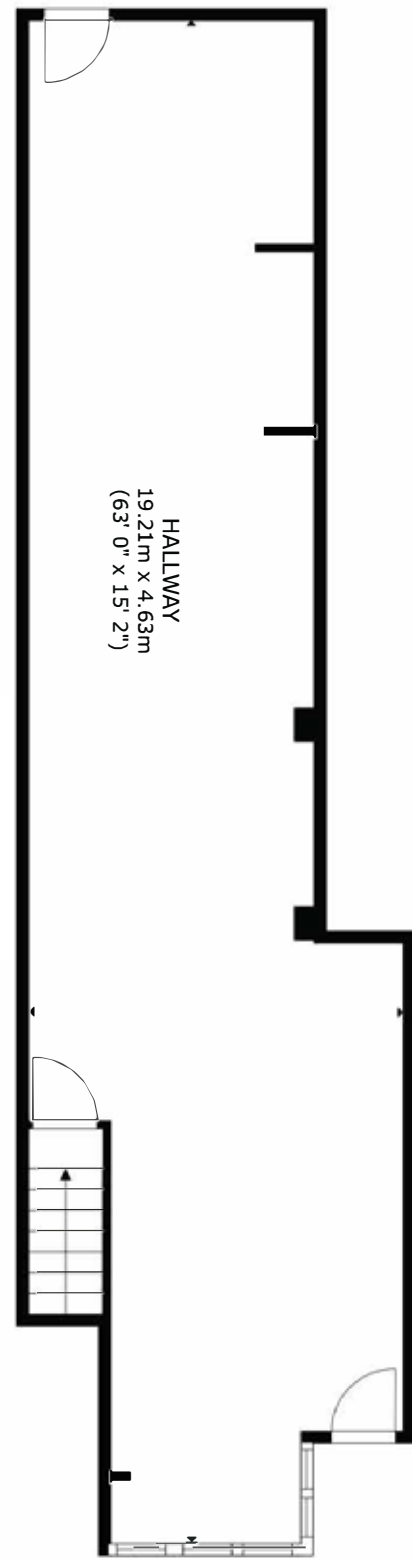


### THE OPPORTUNITY

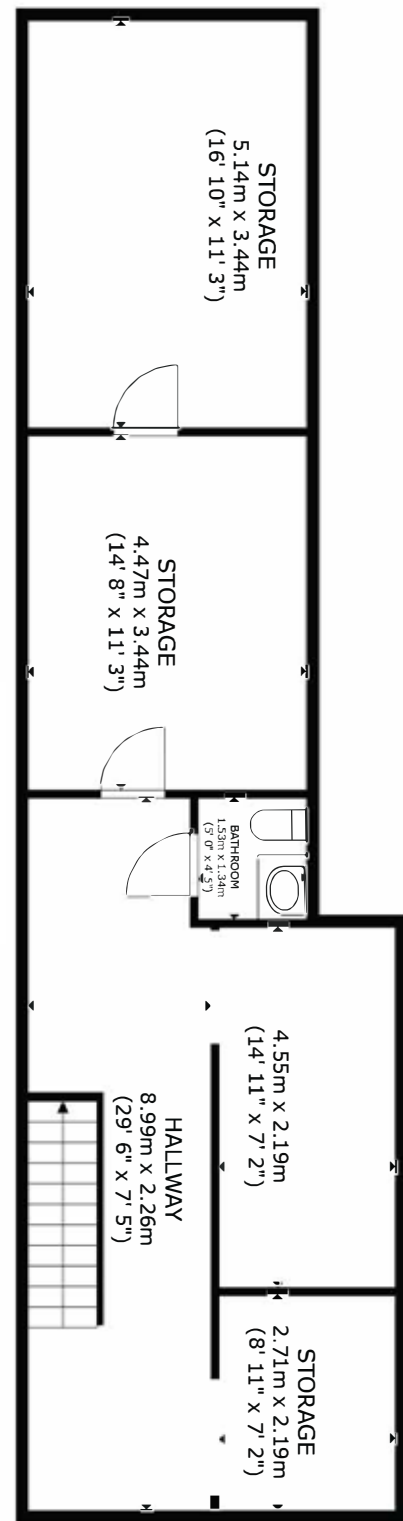
## Prime retail space in the Heart of the Beach

<b>Retail space</b>	950 SF Ground 900 SF Lower Level 1,850 SF TOTAL	<i>*All measurements are approximate and are to be confirmed by the Tenant</i>
<b>Net rent</b>	Contact Listing Agents	
<b>T.M.I.</b>	\$1,800.00/month	
<b>Available</b>	Immediately	
<b>Use</b>	Food, QSR, service-based retail etc.	
<b>Comments</b>	<ul style="list-style-type: none"> <li>▪ Exceptional ground floor retail located in Prime Beaches Neighbourhood</li> <li>▪ Excellent exposure onto Queen Street East, with 16.5 FT of frontage</li> <li>▪ Signage and branding opportunity</li> <li>▪ Former operator was a pharmacy, but open to a variety of different uses</li> <li>▪ Useable basement, rent free</li> <li>▪ Highly accessible via public transit, 501 streetcar right outside the door</li> <li>▪ Neighbouring retailers include: Bailey Nelson, What A Bagel, LCBO, Shoppers Drug Mart, Running Room, COBs Bread, Tim Hortons, BMO, Subway, Hero Burger, Ren's Pets, Circle K, Pizzaville, Popeyes, TD Canada, Trust and Scotiabank.</li> </ul>	

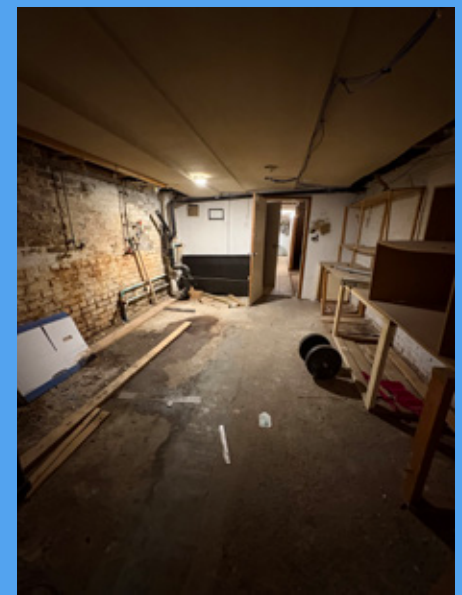
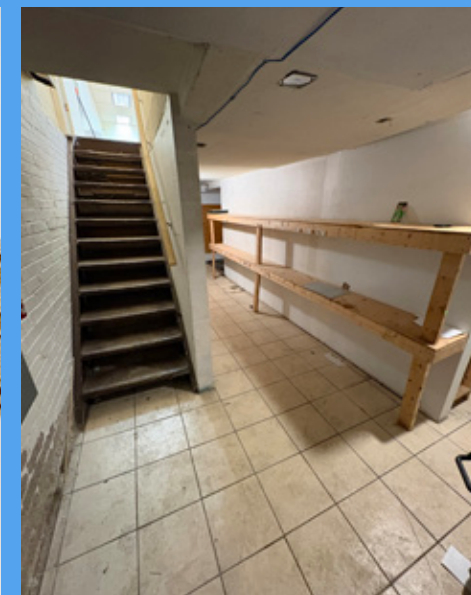
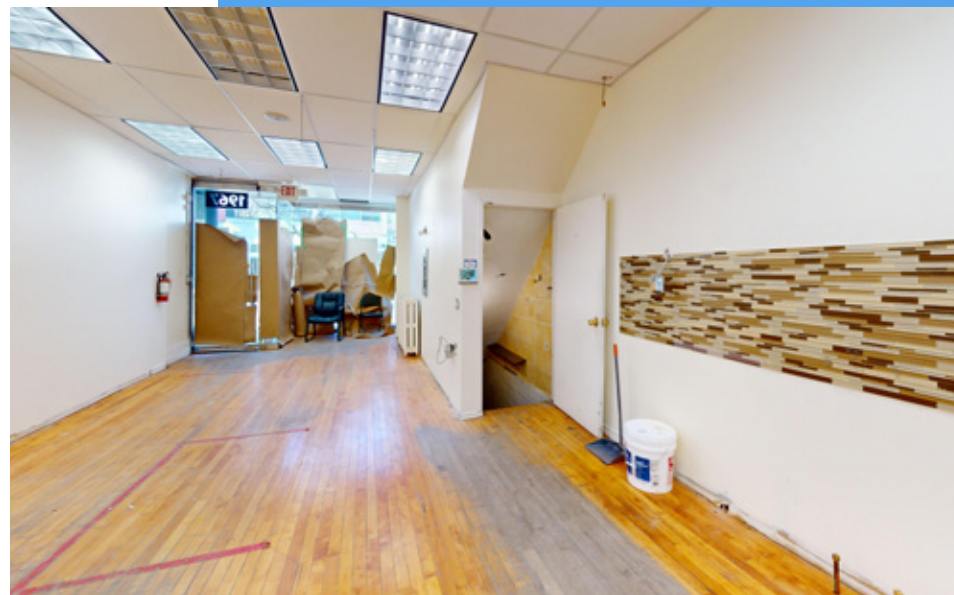
# 1967 Queen Street E



**Ground Floor**  
950 SF  
(approx)



**Lower Level**  
900 SF  
(approx)



**THE BEACH**

A distinctive atmosphere: family-friendly, laid-back, and close-knit, it offers a peaceful retreat within the city.

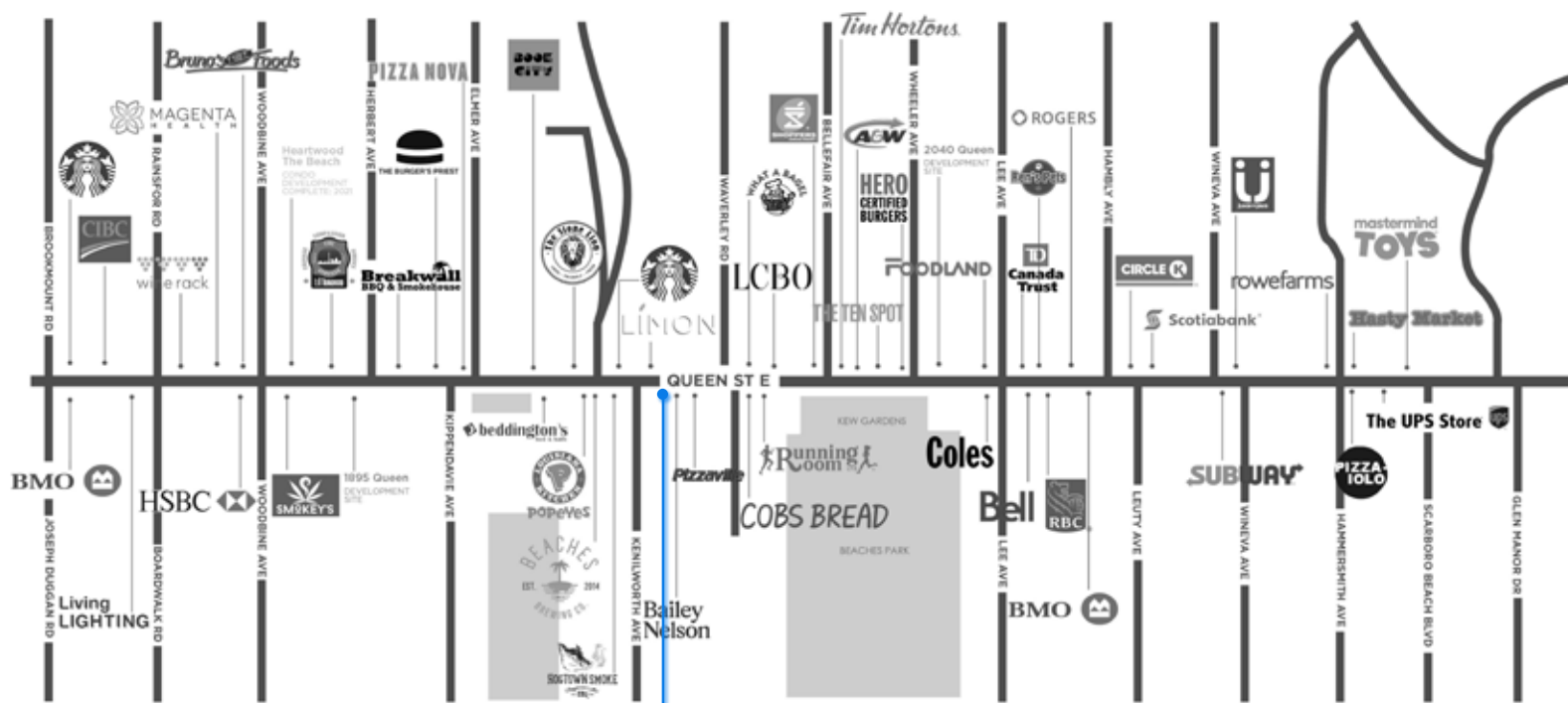
Located in the east end of Toronto, The Beach (often referred to as “The Beaches”) is a charming neighbourhood that offers a small-town vibe within the city. Known as one of Toronto’s top summer destinations, it boasts a variety of attractions that appeal to both locals and visitors. Highlights include the 3km boardwalk, Woodbine Beach Park, Kew Gardens, the Beaches International Jazz Festival, and the Donald D. Summerville Olympic Pool. The neighbourhood also features a number of completed and future residential development sites.

At the heart of the area, vibrant Queen Street East offers a blend of local boutiques, specialty stores, and trendy eateries. It is home to a diverse mix of independent shops, established retailers, unique restaurant offerings, cafes and artisanal home good stores.



DEMOGRAPHICS	
20,087 Total Population	8,559 Total Households
42 Median Age	\$222,510 Avg. household income
\$4,005 Avg. Spend Clothing	\$4,514 Avg. Spend Restaurants
30,000+ Vehicles daily*	4,000+ Pedestrians daily*
+/-50,000 Daily Ridership 501 Queen streetcar	

Stats taken within a 1km radius of 1967 Queen Street E  
SOURCE: ESRI DEMOGRAPHICS 2025 + PINPOINT\*



MAP IS NOT TO SCALE  
FEATURES SELECT NEIGHBOURHOOD RETAILERS

**1967 Queen Street E**



# 1967 Queen Street E

The Savills logo consists of the word "savills" in a lowercase, sans-serif font, positioned to the right of a solid yellow square.

**For more information, please contact:**

**Jordan Karp\***

Executive Vice President  
jkarp@savills.ca  
+1 416 922 2223

**Ryan Morein\***

Executive Vice President  
rmorein@savills.ca  
+1 416 922 2224

**Josh Kauffman\***

Associate  
jkauffman@savills.ca  
+1 647 689 4606

**Savills Inc., Brokerage**

Retail Head Office | 1200 Bay Street, Suite 1105 | Toronto, ON M5R 2A5 | T: +1 647 689 4600

[savills.ca](http://savills.ca)

FIND US ON SOCIAL



\* Sales Representative

© 2025 Savills. All rights reserved. The information contained in this communication has been obtained from a variety of sources believed to be reliable but has not been verified. NO WARRANTY OR REPRESENTATION, EXPRESS OR IMPLIED, IS MADE AS TO THE CONDITION OF THE PROPERTY OR ACCURACY OR COMPLETENESS OF THE INFORMATION CONTAINED HEREIN AND SAME IS SUBMITTED SUBJECT TO ERRORS, OMISSIONS, CHANGE OF PRICE, RENTAL OR OTHER CONDITIONS, WITHDRAWAL WITHOUT NOTICE AND TO ANY SPECIFIC CONDITIONS IMPOSED BY THE PROPERTY OWNER OR LESSOR.