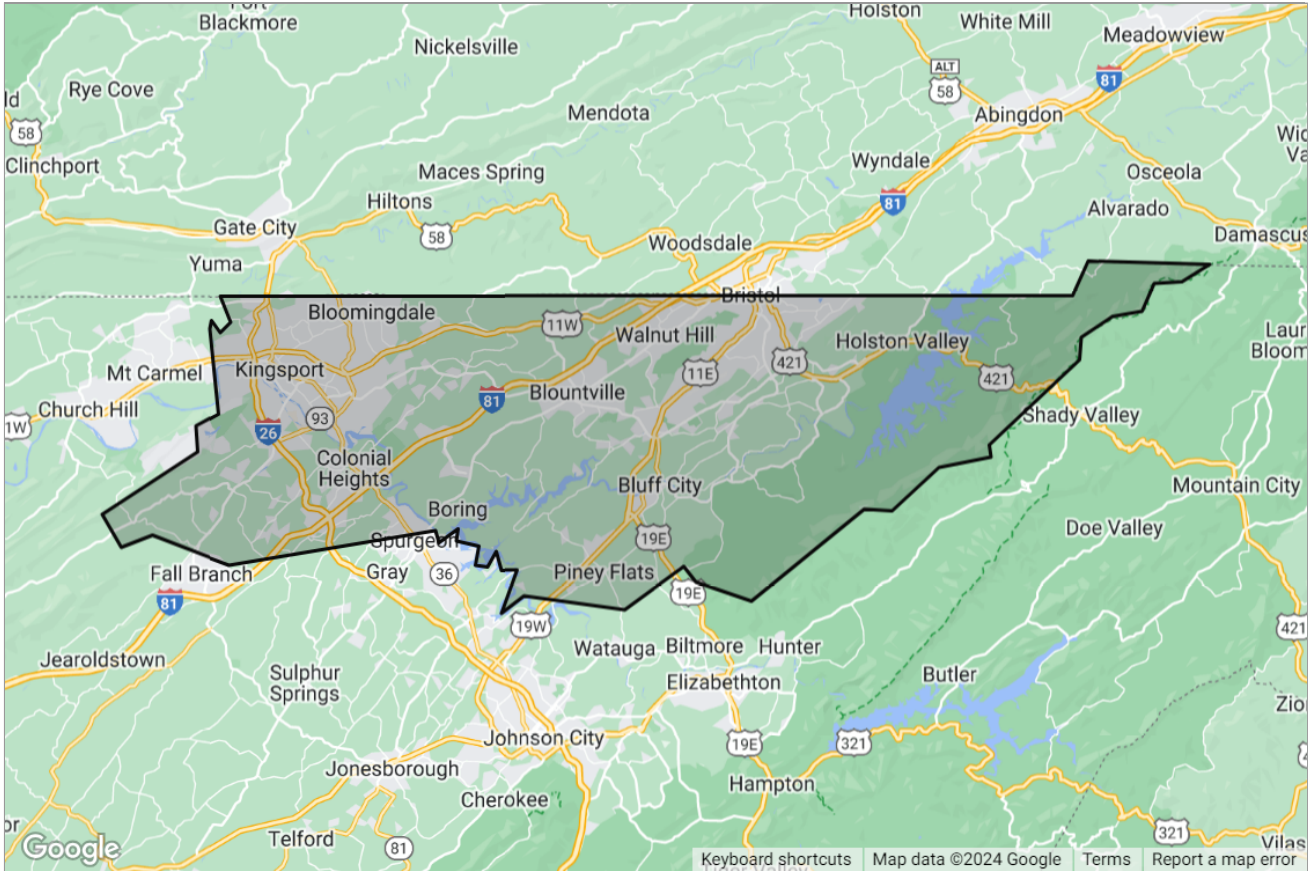


TRADE AREA ANALYSIS

Best Places to Find Your Customers Within
Sullivan County, Tennessee



Presented by
**Glenn Perkins ABR, SRS, BPO, |
MRP**

Vice President Net Lease Investments
Tennessee Real Estate License: 326486
Virginia Real Estate License: 0225224327



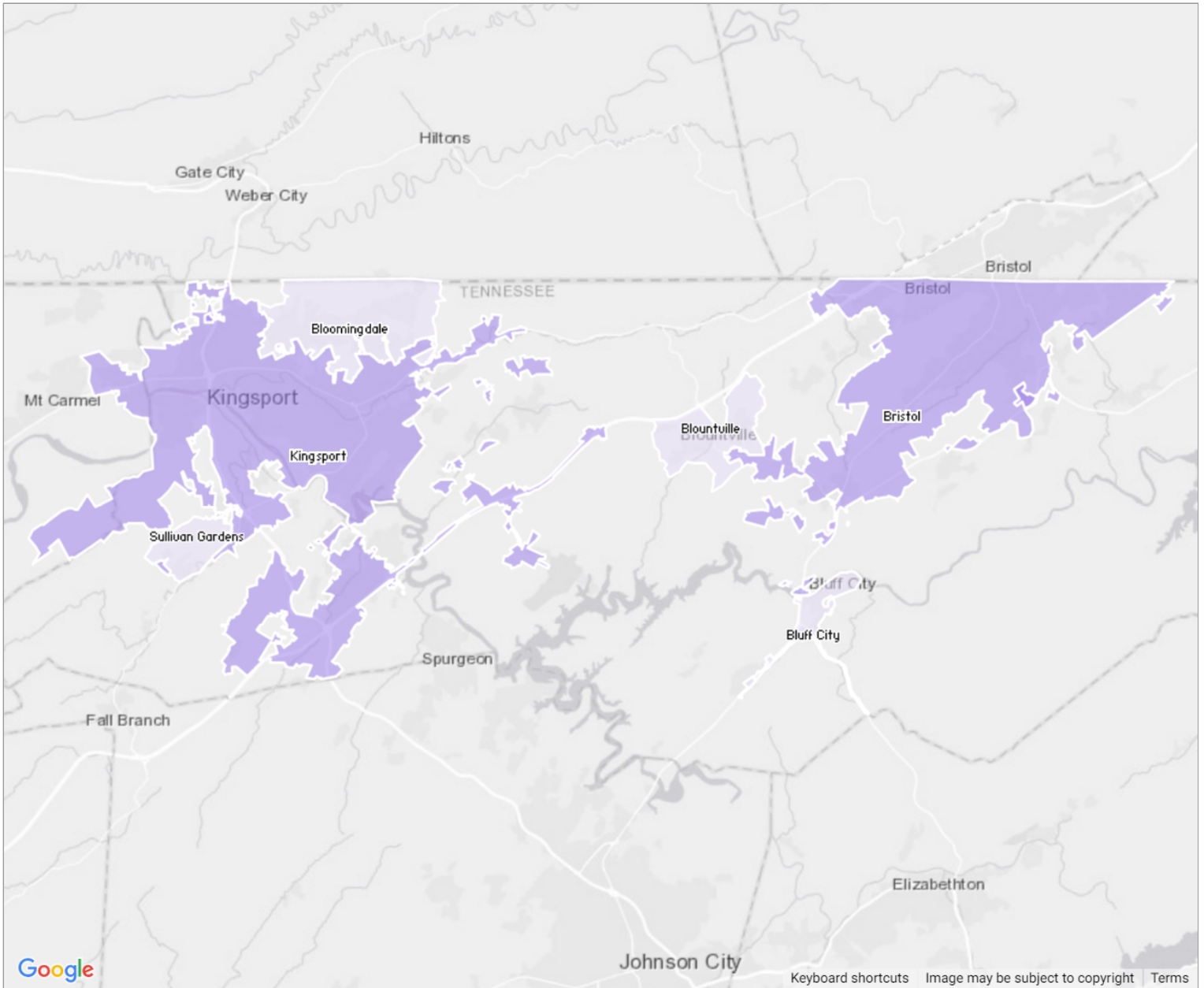
Mobile: (423) 956-5707 | Office: (423) 230-0255 |
Fax: (423) 956-5707

Main: glenn@tcigroup.com
Office: www.tcigroup.com

TCI Group, Jerry Petzoldt Agency, LLC
5 Red Bush Court, Suite 20
Johnson City, TN 37601

Area Searched: Sullivan County, Tennessee

RPR searched within your subject area for the places that are the best matches based on the criteria you selected below.



No Match Good Better Best

Criteria Used for Analysis

Accommodation and Food
3,406
 (8.7%)

Construction
2,482
 (6.3%)







Manufacturing
5,981
 (15.2%)

Retail Trade
5,389
 (13.7%)

Ranking of Search Results

This grid ranks your analysis results. The trade areas with the best matches to your criteria are shown first. The results include the name of the trade area and how the area scored for each of the selected criteria.



Rank	Cities	2023-2028 Per Capita Income Growth Rate <i>Percent change</i>	Accommodation and Food <i>Count & percent of workers</i>	Construction <i>Count & percent of workers</i>	Manufacturing <i>Count & percent of workers</i>	Retail Trade <i>Count & percent of workers</i>
	Bristol, Tennessee	3.36%	1,050 9.1%	629 5.5%	1,534 13.4%	1,569 13.7%
	Kingsport, Tennessee	3.45%	1,876 8.6%	1,236 5.7%	3,633 16.7%	2,982 13.7%
	Bloomingdale, Tennessee	3.82%	285 8.3%	346 10.1%	492 14.3%	569 16.6%
	Blountville, Tennessee	4.00%	129 10.5%	124 10.1%	153 12.5%	77 6.3%
	Bluff City, Tennessee	3.93%	48 6.1%	122 15.6%	110 14.1%	116 14.8%
	Sullivan Gardens, Tennessee	3.80%	18 2.9%	25 4.1%	59 9.6%	76 12.4%

Analysis Criteria Information

2023-2028 Per Capita Income Growth Rate
Percent change

2023-2028 Growth Rate: Per Capita Inc

Data Source: U.S. Census American Community Survey via Esri, 2023

Update Frequency: Annually

Accommodation and Food
Count & percent of workers

2023 Industry: Accommodation/Food Svcs

Data Source: U.S. Census American Community Survey via Esri, 2023

Update Frequency: Annually

Construction
Count & percent of workers

2023 Industry: Construction

Data Source: U.S. Census American Community Survey via Esri, 2023

Update Frequency: Annually

Manufacturing
Count & percent of workers

2023 Industry: Manufacturing

Data Source: U.S. Census American Community Survey via Esri, 2023

Update Frequency: Annually

Retail Trade
Count & percent of workers

2023 Industry: Retail Trade

Data Source: U.S. Census American Community Survey via Esri, 2023

Update Frequency: Annually

About RPR (Realtors Property Resource)

- Realtors Property Resource® is a wholly owned subsidiary of the National Association REALTORS®.
- RPR offers comprehensive data – including a nationwide database of 164 million properties – as well as powerful analytics and dynamic reports exclusively for members of the NAR.
- RPR's focus is giving residential and commercial real estate practitioners, brokers, and MLS and Association staff the tools they need to serve their clients.
- This report has been provided to you by a member of the NAR.



About RPR's Data

RPR generates and compiles real estate and other data from a vast array of sources. The data contained in your report includes some or all of the following:

- **Listing data** from our partner MLSs and CIEs, and related calculations, like estimated value for a property or median sales price for a local market.
- **Public records data** including tax, assessment, and deed information. Foreclosure and distressed data from public records.
- **Market conditions and forecasts** based on listing and public records data.
- **Census and employment data** from the U.S. Census and the U.S. Bureau of Labor Statistics.
- **Demographics and trends data** from Esri. The data in commercial and economic reports includes Tapestry Segmentation, which classifies U.S. residential neighborhoods into unique market segments based on socioeconomic and demographic characteristics.
- **Business data** including consumer expenditures, commercial market potential, retail marketplace, SIC and NAICS business information, and banking potential data from Esri.
- **School data and reviews** from Niche.
- **Specialty data sets** such as walkability scores, traffic counts and flood zones.



Update Frequency

- Listings and public records data are updated on a continuous basis.
- Charts and statistics calculated from listing and public records data are refreshed monthly.
- Other data sets range from daily to annual updates.

Learn more

For more information about RPR, please visit RPR's public website: <https://blog.narrpr.com>

