**FOR SALE**

FORMER BANK BRANCH

2,816 SF

Key Features

- 2,816 SF free-standing building on 0.77 acres
- Built in 1982
- Close to I-94 and US-127
- Zoned C1, Local Commercial District, per county records
- Former bank branch with drive-through lanes
- Surface parking lot

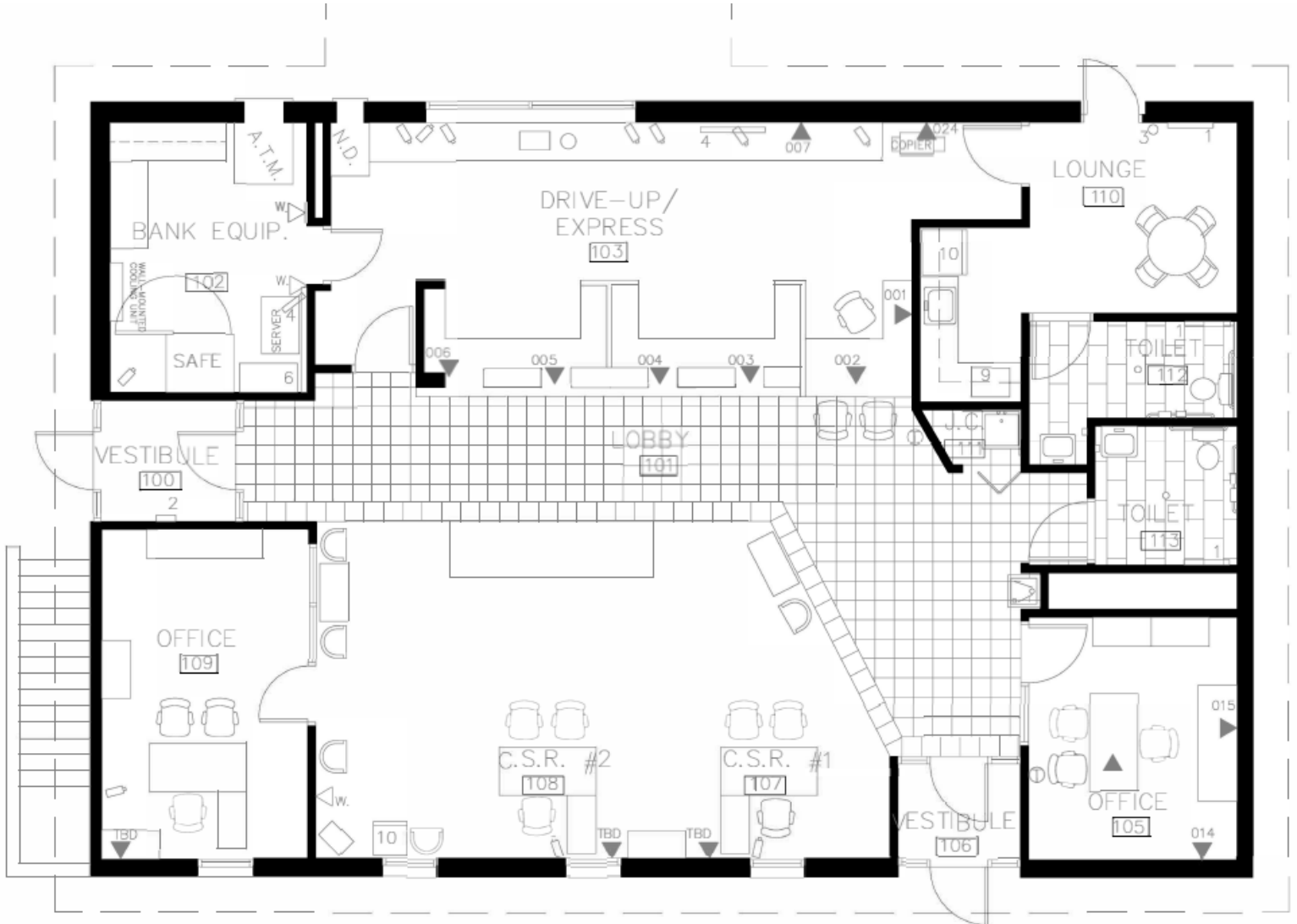
Frontage	Land	Total GLA	Asking Price
190 feet approx.	0.77 acres	2,816 SF	\$295,000

**Craig Herschel**
Director+1 734 492 0089
craig.herschel@cushwake.com**Garrett Keais**
Executive Managing Director+1 248 358 6112
garrett.keais@cushwake.comcushmanwakefield.com

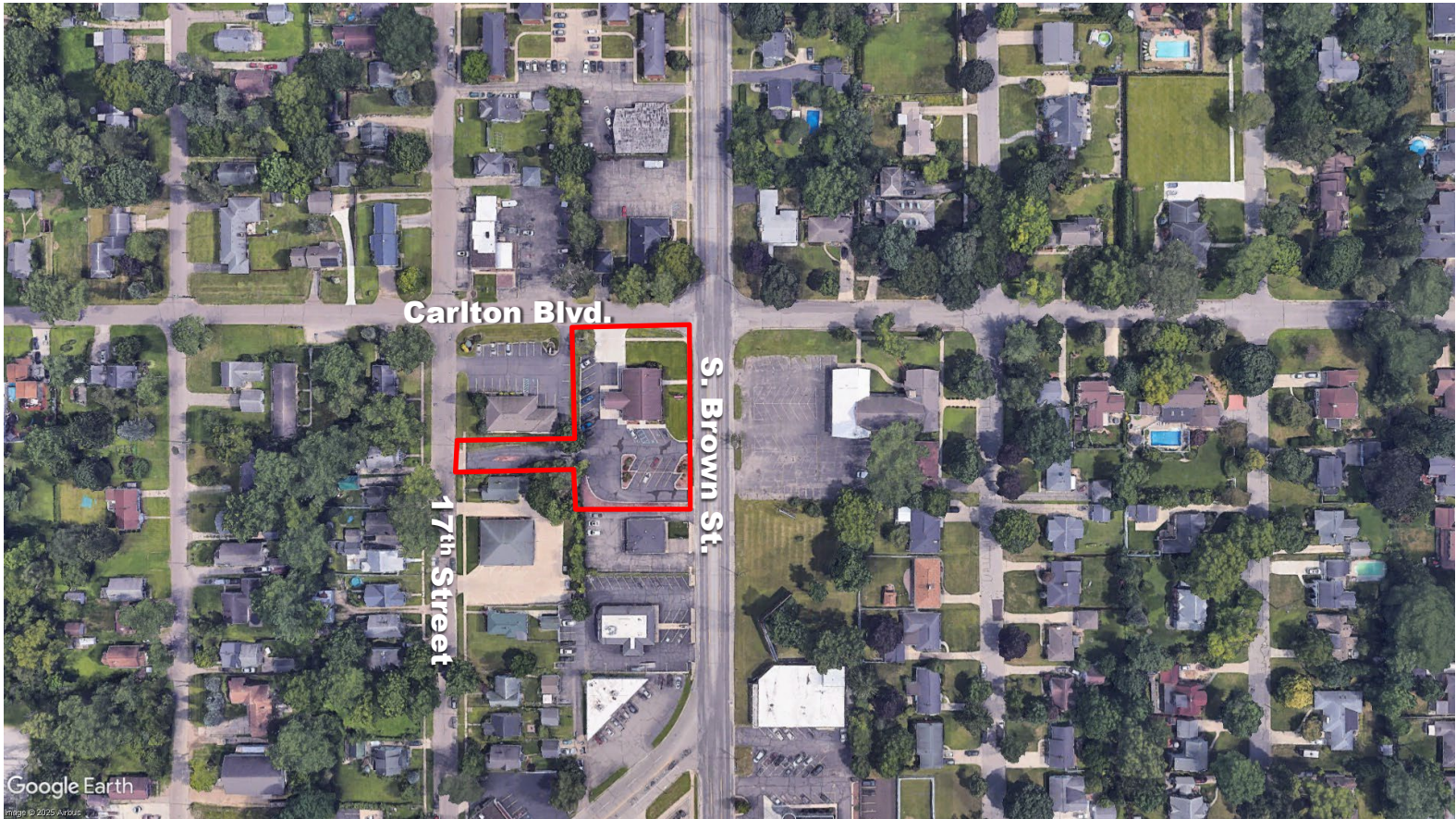
Interior Photos



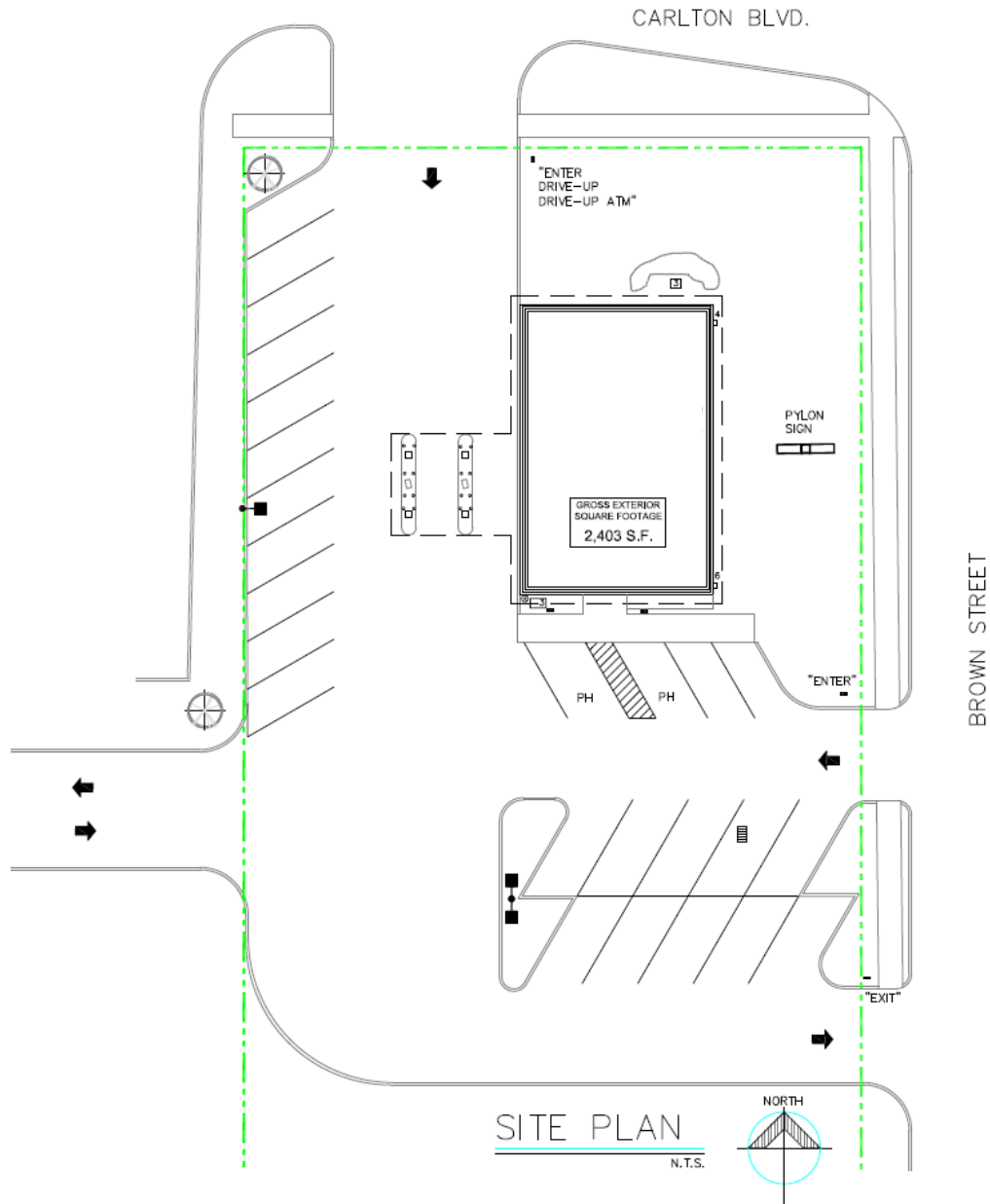
Floor Plan



Aerial



Site Plan



Craig Herschel
Director
734 492 0089
craig.herschel@cushwake.cm

Garrett Keais
Executive Managing Director
248 358 6112
garrett.keais@cushwake.com

cushmanwakefield.com