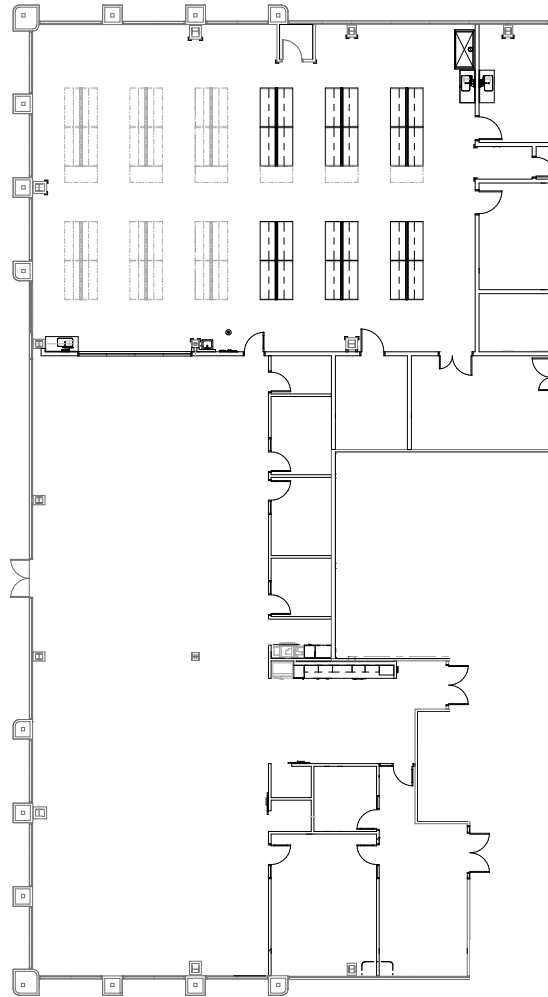


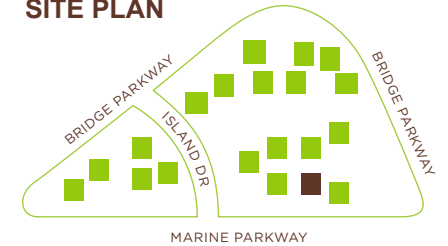
**SUITE 101 - ±12,783 SF**  
Fitted Lab - Available Now



**KEY PLAN**



**SITE PLAN**



**BEN PAUL**  
Vice Chairman  
+1 650 401 2123  
ben.paul@cushwake.com  
LIC #01210872

**MARC POPE**  
Vice Chairman  
+1 650 401 2131  
marc.pope@cushwake.com  
LIC #01474483

**NICK WALDSMITH**  
Director  
+1 650 320 0244  
nick.waldsmith@cushwake.com  
LIC #02148008