



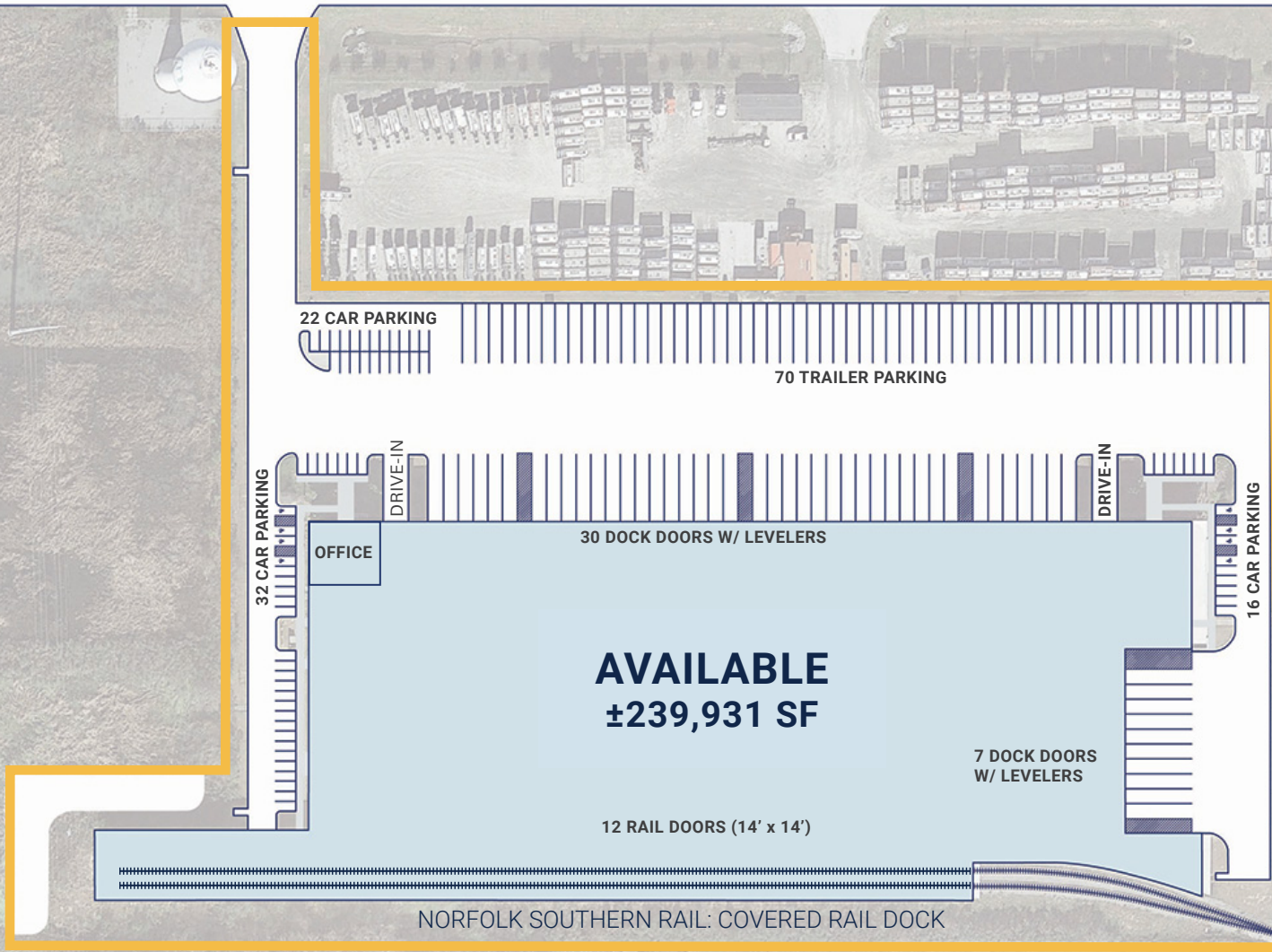
CenterPoint Intermodal Center

Rail-Served Warehouse (Norfolk Southern)

40 Sonny Perdue Drive | Garden City, GA (Savannah)



SONNY PERDUE DRIVE



Prime Location with Easy Access to the Port of Savannah & Interstate-95
Direct Access to Norfolk Southern Rail Line

Property Highlights

- + ±239,931 SF Front Load Warehouse Building
- + Norfolk Southern rail access with covered dual rail dock in rear
- + Office: ±3,283 SF
- + Ceiling Height: 32'
- + Column Spacing: 53'-4" x 55'
- + Dock Doors: 37 (all with dock levelers)
- + Rail Doors: 12 (14' x 14')
- + Trailer Parks: 70 spaces
- + Car Parks: 70 spaces
- + Construction: Concrete tilt-wall
- + Power: 2,000 Amp service
- + ESFR sprinklers

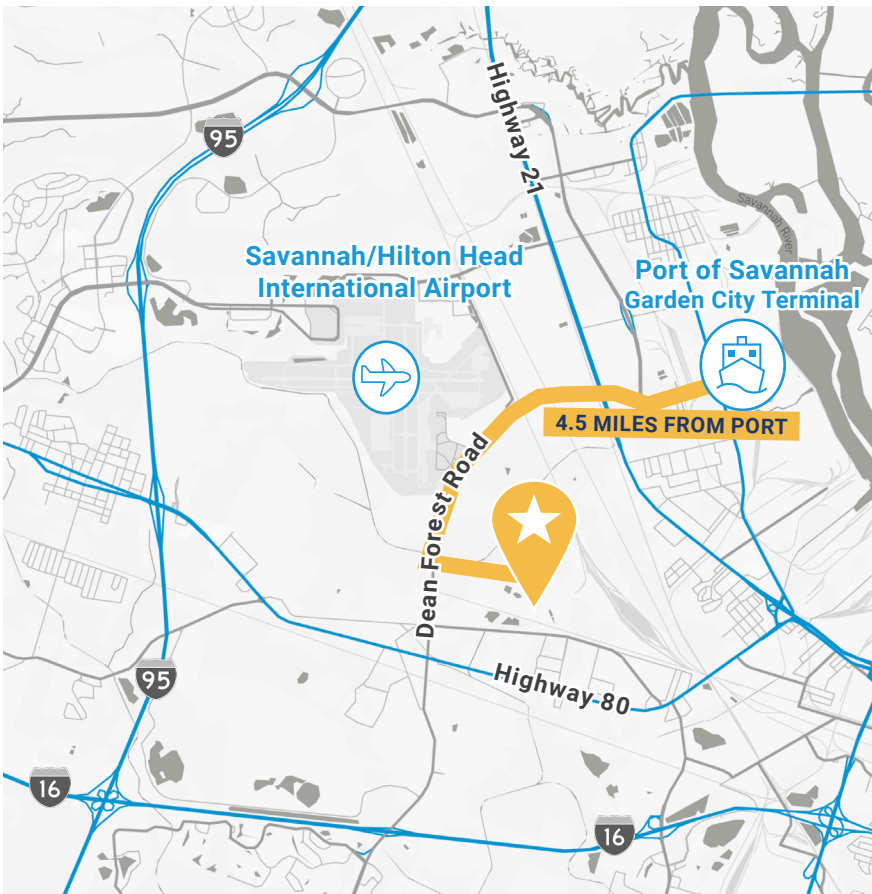
CenterPoint Intermodal Center

40 Sonny Perdue Drive, Savannah, GA



CenterPoint Intermodal Center | 40 Sonny Perdue Drive, Savannah, GA

THE LOCATION



Key Distances

Port of Savannah
(Garden City Terminal)
4.5 miles

Interstate 16
3.8 miles

Interstate 95
5.0 miles

Superior Infill Location



Danny Chase, SIOR
912.604.4918
danny.chase@colliers.com



Jonathan Guffey
Vice President - Leasing
jguffey@centerpoint.com

centerpoint.com

This document has been prepared by Colliers International for advertising and general information only. Colliers International makes no guarantees, representations or warranties of any kind, expressed or implied, regarding the information including, but not limited to, warranties of content, accuracy and reliability. Any interested party should undertake their own inquiries as to the accuracy of the information. Colliers International excludes unequivocally all inferred or implied terms, conditions and warranties arising out of this document and excludes all liability for loss and damages arising there from. This publication is the copyrighted property of Colliers International and/or its licensor(s). ©2025. All rights reserved.