

595 Corporate Park of Commerce

10368 W State Road 84
Davie, Florida 33324



Contact Us

Tom O'Loughlin

Vice Chairman

+1 954 817 3919

tom.oloughlin@cbre.com

Michael Oretsky

First Vice President

+1 954 798 4284

michael.oretzky@cbre.com

Frankie Buffalino

Associate

+1 516 640 8861

frank.buffalino@cbre.com

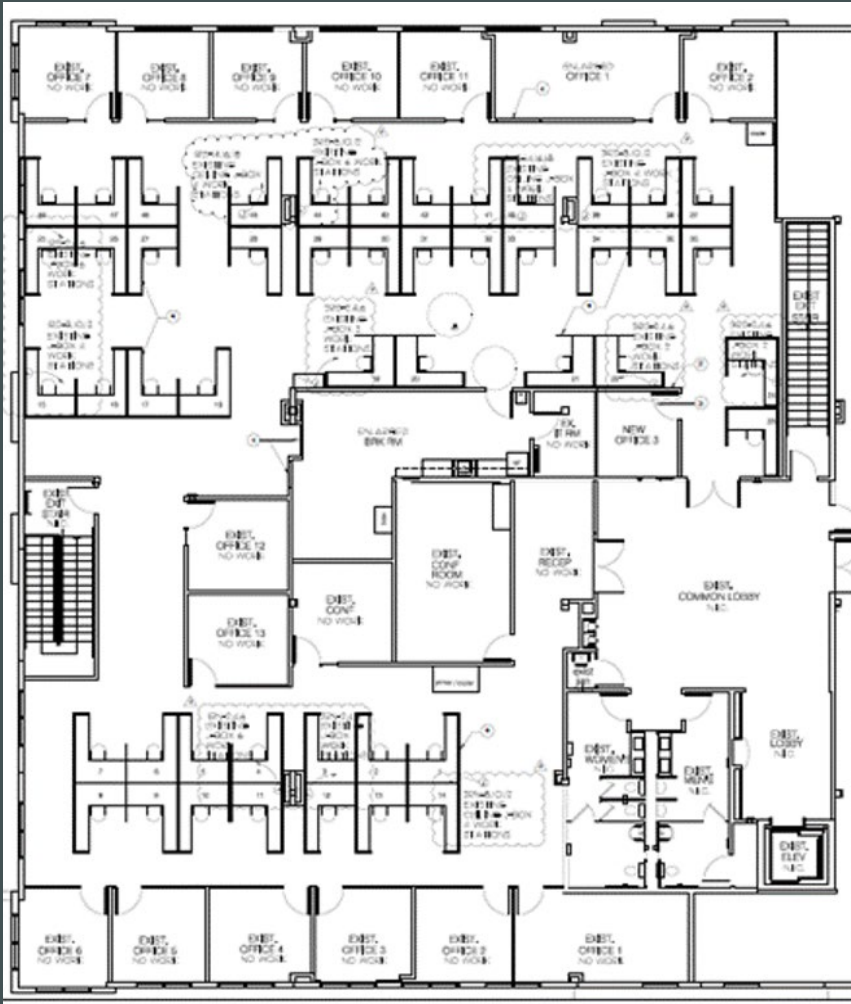
595 Corporate Park of Commerce

10368 W State Road 84, Suite 201 & 203 | Davie, Florida 33324

Property Features

- + 14,540 SF Available
- + 100% Office space
- + 100% HVAC space
- + Suites are contiguous
- + Convenient access to a wide range of amenities
- + Best in class business park
- + Within 30 minutes of two (2) international airports and ports
- + Direct I-595 frontage (108,000 AADT)

Suite 201 Floor Plan



Suite 203 Floor Plan

