



**Kidder
Mathews**

FINESTRA LOFTS: Urban Condominiums in Little Italy

9-UNITS | 1943 INDIA STREET | SAN DIEGO, CA



Exclusively listed by

MERRICK MATRICARDI
858.369.3085
merrick.matricardi@kidder.com
LIC N° 01348986

JIM NEIL
858.369.3083
jim.neil@kidder.com
LIC N° 01352736

ERIC COMER
858.369.3084
eric.comer@kidder.com
LIC N° 00842230

KIDDER.COM

The information contained in the following Marketing Brochure is proprietary and strictly confidential. It is intended to be reviewed only by the party receiving it from Kidder Mathews and should not be made available to any other person or entity without the written consent of Kidder Mathews.

This Marketing Brochure has been prepared to provide summary, unverified information to prospective purchasers, and to establish only a preliminary level of interest in the subject property. The information contained herein is not a substitute for a thorough due diligence investigation. Kidder Mathews has not made any investigation, and makes no warranty or representation, with respect to the income or expenses for the subject property, the future projected financial performance of the property, the size and square footage of the property and improvements, the presence or absence of contaminating substances, PCB's or asbestos, the compliance with State and Federal regulations, the physical condition of the improvements thereon, or the financial condition or business prospects of any tenant, or any tenant's plans or intentions to continue its occupancy of the subject property. The information contained in this Marketing Brochure has been obtained from sources we believe to be reliable; however, Kidder Mathews has not verified, and will not verify, any of the information contained herein, nor has Kidder Mathews conducted any investigation regarding these matters and makes no warranty or representation whatsoever regarding the accuracy or completeness of the information provided. All potential buyers must take appropriate measures to verify all of the information set forth herein.

This information has been secured from sources we believe to be reliable. We make no representations or warranties, expressed or implied, as to the accuracy of the information. References to square footage or age are approximate. Recipient of this report must verify the information and bears all risk for any inaccuracies.





TABLE OF CONTENTS

01

EXECUTIVE SUMMARY

The Offering
Investment Highlights

04

COMPARABLES

Sale Comparables
Rent Comparables
Condo Sale Comps

02

PROPERTY OVERVIEW

Property Information
Condo Map

05

LOCATION OVERVIEW

Market Overview
Demographics

03

FINANCIALS

Proforma Apartments
Sale Projections Condominiums



ART

WEE SHIM FINE ART

Chick & Pical

EXECUTIVE SUMMARY

BOUTIQUE *CONDO* BUILDING IN THE HEART LITTLE ITALY

Finestra Lofts is a nine-unit condominium development located in the heart of San Diego’s vibrant Little Italy neighborhood. Built in 2006, the property offers a rare chance to own a modern, architecturally distinctive asset in a highly desirable urban location. With rising construction costs, Finestra Lofts provides the opportunity to purchase a newer property at a price well below replacement cost. Finestra Lofts also benefits from a recorded Final Map, allowing a buyer to sell individual condominium units immediately or hold as a flexible future exit strategy.

The five-story building features spacious, open-concept floor plans with select units offering premium Bay views. There is one ground floor commercial space currently occupied by an art gallery. Additional features include controlled access, elevator service and secure underground parking.

The property boasts a Walk Score of 99, providing residents with immediate access to the best of Little Italy and Downtown San Diego—including the San Diego Trolley, just a short walk away. Little Italy is booming with award winning restaurants, trendy bars and nightlife, Italian inspired coffee and gelato shops, and more.

This offering is ideal for investors seeking long-term income in a high-demand rental market or developers looking to execute a phased condo disposition in one of San Diego’s most supply-constrained neighborhoods.



ADDRESS	1943 India Street, San Diego, CA 92101
YEAR BUILT	2006
PRICE	\$5,500,000
PRICE /UNIT	\$611,111
PRICE/RENTABLE SF	\$426
PRICE/BUILDING SF	\$348
CAP RATE	4.06%
MARKET CAP RATE	4.85%
GRM	13.5
MARKET GRM	12.6



MORNING GLORY
★★★★★

IRONSIDE FISH &
OYSTER
★★★★★

NONNA
★★★★★

FILIPPIS
★★★★★

MR. MOTO PIZZA
★★★★★

CIVICO 1845
★★★★★

RISTORANTE
ILLANDO
★★★★★

BORNE & RAISED
★★★★★

BARBUSA
★★★★★

BENCOTTO
★★★★★

CLOAK & PETAL
★★★★★

KETCH
★★★★★

BRIGANTINE
★★★★★

ROMAN WOLVES
★★★★★

UNDERBELLY
★★★★★

BARRA OLBIA
★★★★★

With an impressive Walk Score of 99, Little Italy is filled with over 70 patio cafés, restaurants, pubs, and fine dining venues. This map highlights some of the most popular establishments.

INVESTMENT HIGHLIGHTS



LITTLE ITALY LOCATION

Little Italy is a booming neighborhood recognized as a vibrant cultural and culinary hub. Ongoing urban development projects are expected to further increase property values, making it an attractive area for investment.



PRICED BELOW REPLACEMENT COST

With the rising cost of construction, Finestra Lofts offers a buyer the unique opportunity to buy a newer property in an excellent location significantly below replacement cost.



IMMEDIATE FOR SALE STRATEGY

The property has a Final Map allowing a buyer to sell units as condominiums today, or use as a potential exit strategy in the future.



99 WALK SCORE

Finestra Lofts is nestled among an eclectic mix of both historic and new buildings and teaming with foodie-approved restaurants and trendy bars. Also walking distance to the San Diego Trolley.



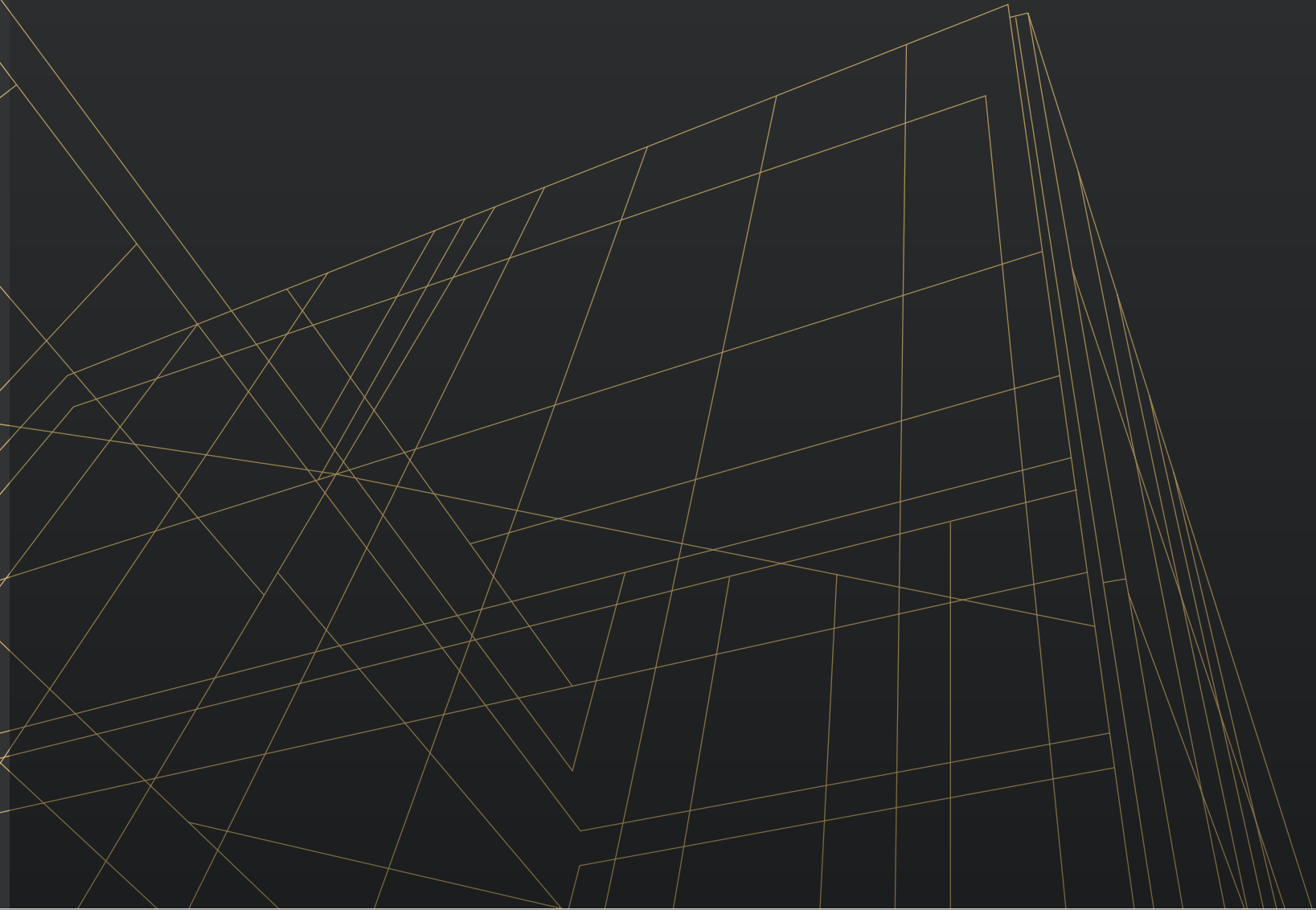
NEARBY EMPLOYMENT

Downtown is home to more than 6,900 businesses, 77,000 employees and 15 million square feet of office space. The number of employees in downtown is expected to grow by 20% by 2030.



DESIRABLE DEMOGRAPHICS

Little Italy provides excellent demographics with an average household income of \$224,668 and over 80% of the population with a bachelor's degree or higher.



FINESTRA LOFTS

PROPERTY OVERVIEW

Section 02



PROPERTY INFORMATION

OVERVIEW

ADDRESS	1943 India Street, San Diego, CA 92101
NO OF UNITS	9
APN	533-223-03-00
MUNICIPALITY	San Diego
LAND AREA	5,025 SF / 0.12 Acres
DENSITY	75 Units/Acre
ZONING	CCPD-NC

BUILDING INFORMATION

YEAR BUILT	2006
BUILDING SF	12,879 Rentable Square Feet 15,810 Gross Square Feet
AVERAGE UNIT SIZE	1,433 SF
CONSTRUCTION	Five story building over subterranean garage
ACCESS	Controlled access with elevator service to each floor
ROOF COVERING	Flat
WINDOWS	Aluminum frame
PARKING	Eight (8) garage parking spaces of which two (2) are tandem for a total of 10 spaces. The tandem spaces are assigned to unit 401 & 402.

MECHANICAL/ELECTRICAL/BUILDING SYSTEM

METERING	Property is individually metered for SDGE. Water is on a master meter with 9 water sub-meters.
HOT WATER	Each unit has its own hot water heater.
HVAC	Central Air and Heat.
COOKING ENERGY	Electric
LAUNDRY	In-unit washer and dryers

TAX INFORMATION*

MILLAGE RATE	1.25114%
FIXED ASSESSMENTS	\$3,467.88
TAX YEAR	2025-2026

* Property taxes are reassessed at the time of sale

BUILT AS CONDOMINIUMS WITH A *VESTED CONDO MAP*

MAP WAIVER APPROVAL

The developer applied for a Map Waiver while the property was still under construction. The Map Waiver was approved on November 14, 2006 and was subsequently vested with a Parcel Map for Condos on December 6, 2006. The condo approvals will be provided to Buyers with the Due Diligence information.

DRE APPROVAL

A developer would be required to amend the expired White Report from the Department of Real Estate prior to selling the units. Generally, the process takes 30-60 days, depending on the complexity of the amendment and DRE workload. Supporting documentation will include revised CC&Rs, updated budget, new ownership/entity documents and revised purchase agreements or disclosures.



BUILDING & UNIT AMENITIES

Elevator served

Garage car elevator (only a few in San Diego)

Electric car chargers in garage

Common outdoor patio with tables and chairs

Water views to the west from select units

Secured entry

Central forced heating and air

In-unit washer/dryer

Patio or balcony

Hardwood floors

Kitchens with stainless steel appliances and custom cabinetry

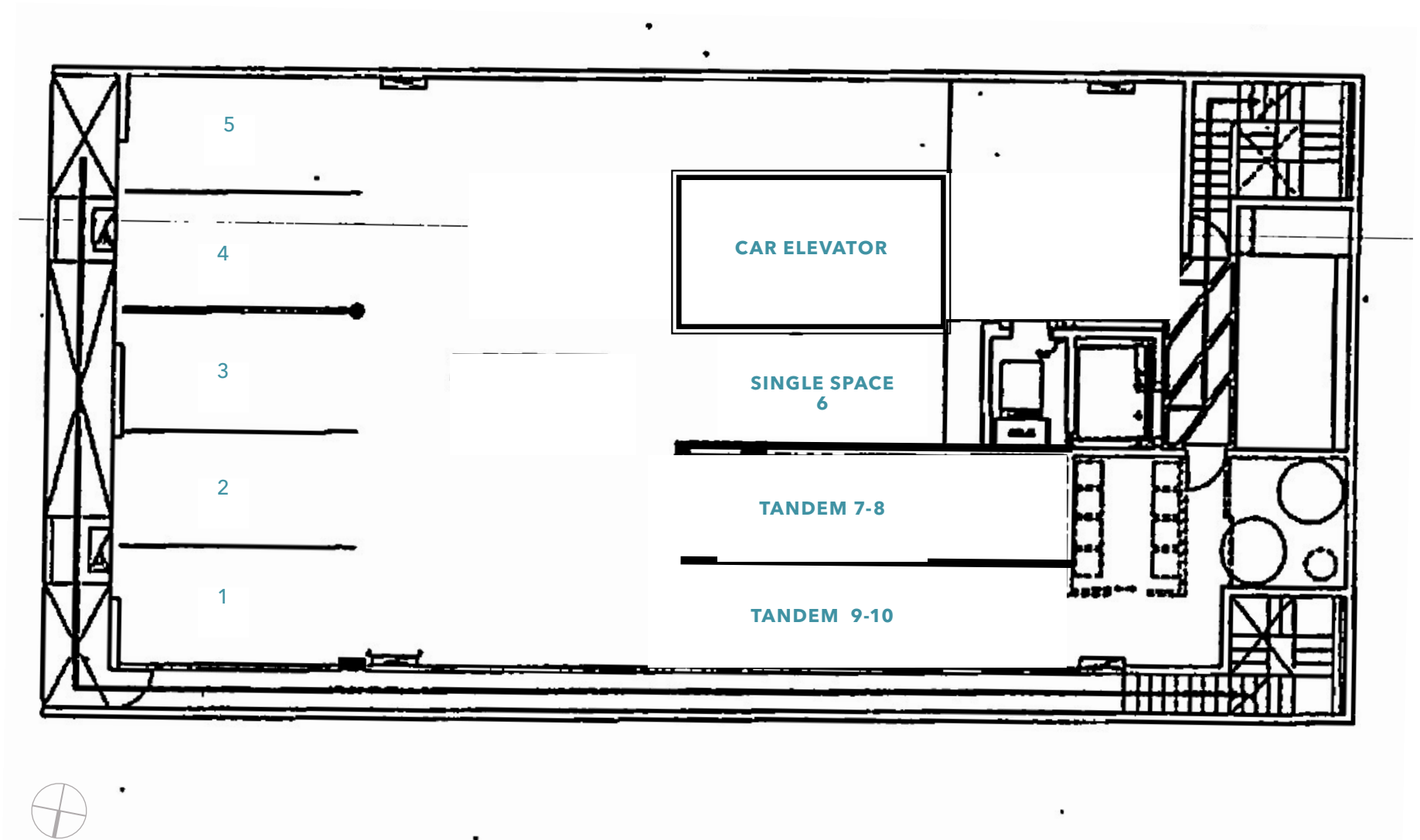
Granite counter tops

Travertine flooring in bathrooms

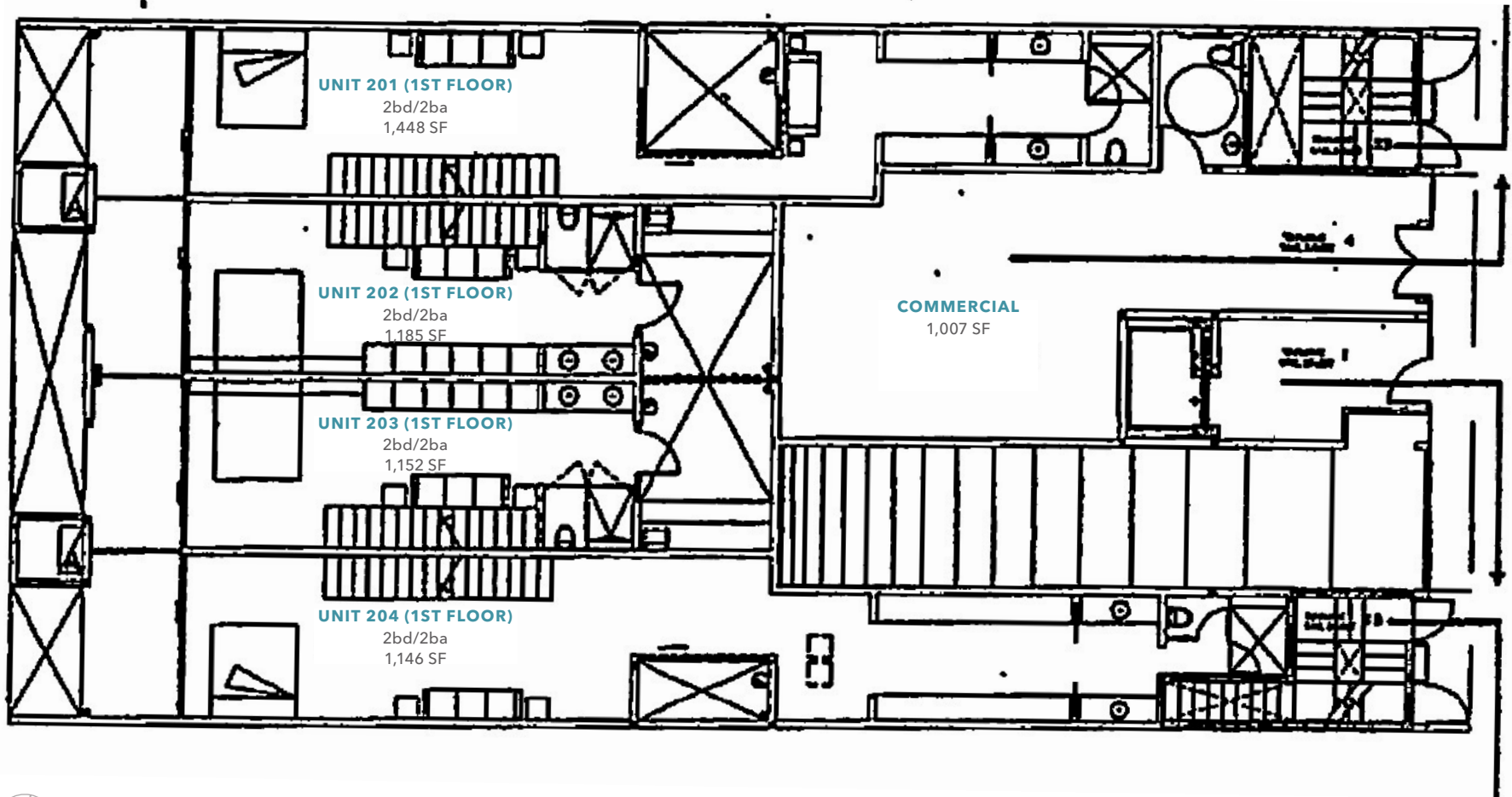
Walk-in closets



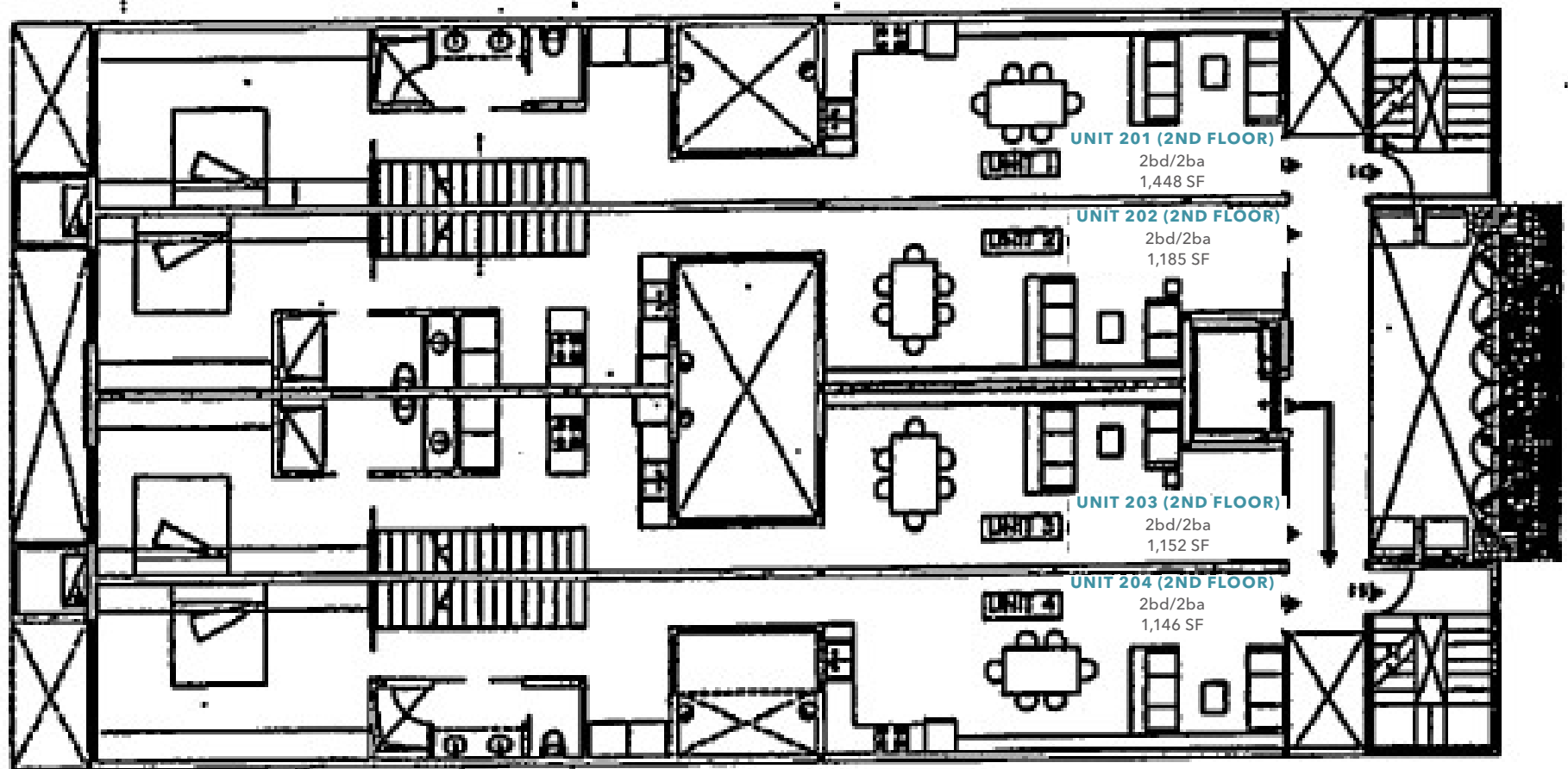
UNDERGROUND GARAGE



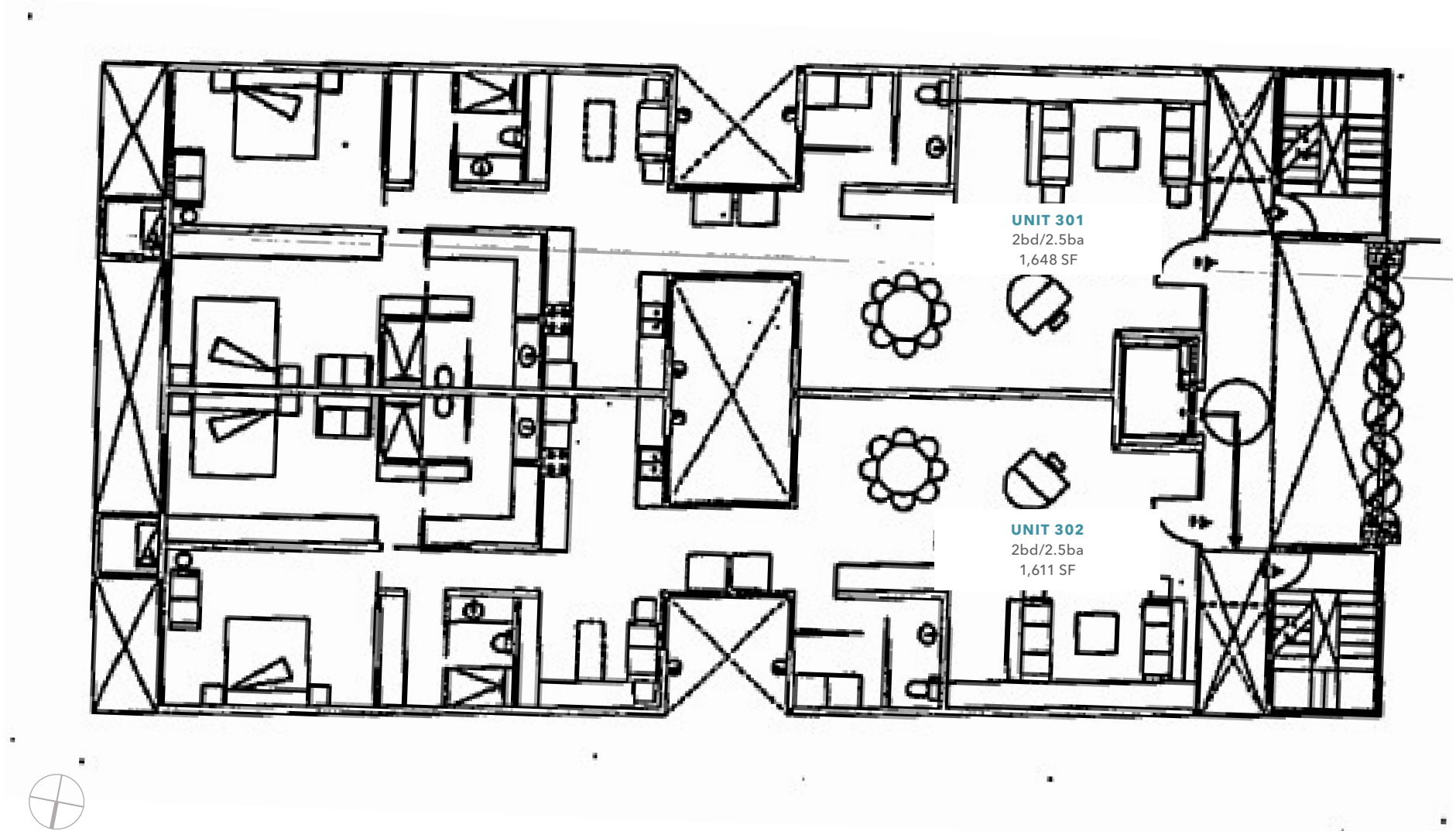
GROUND FLOOR/ COMMERCIAL



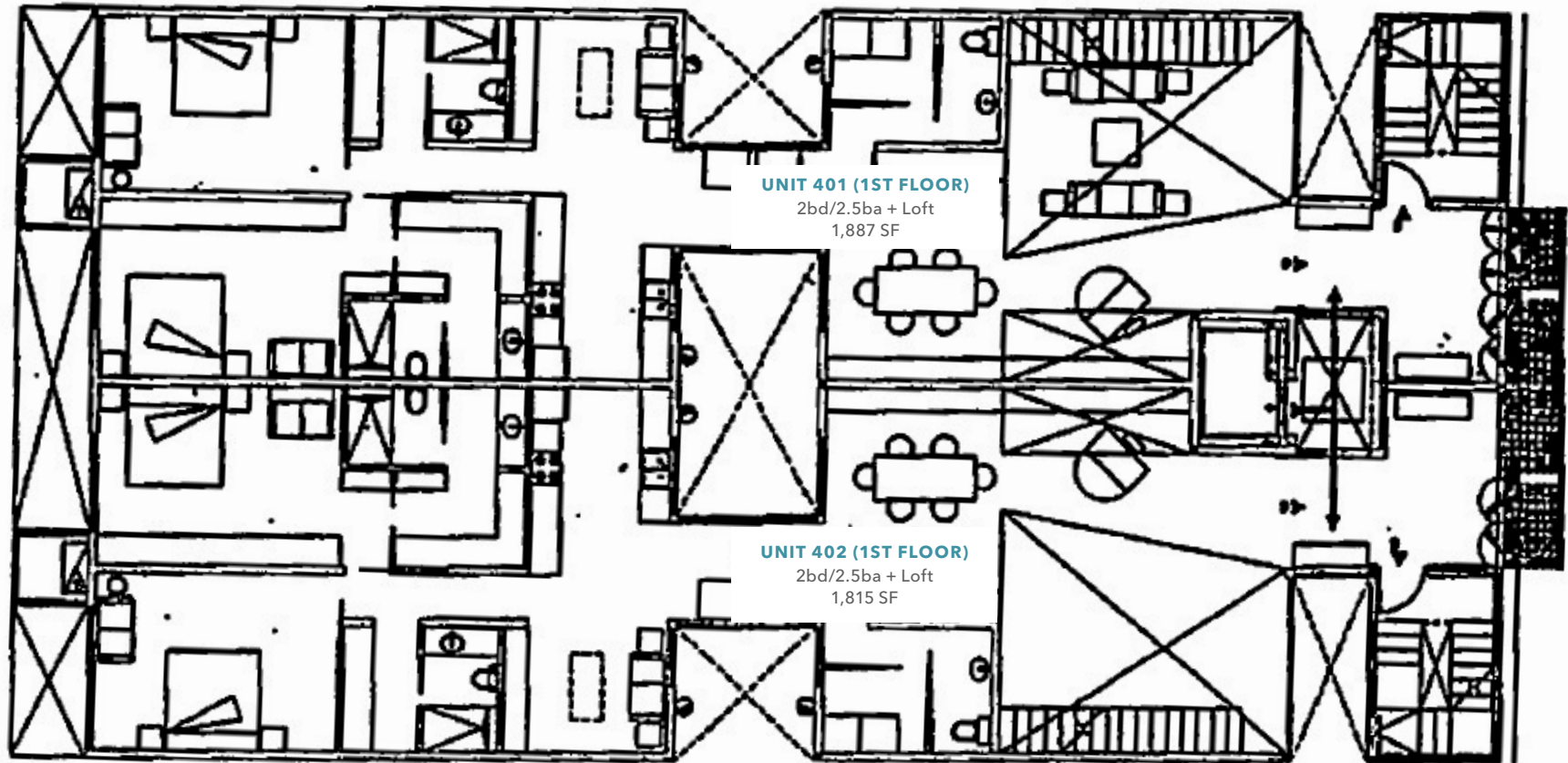
2ND FLOOR



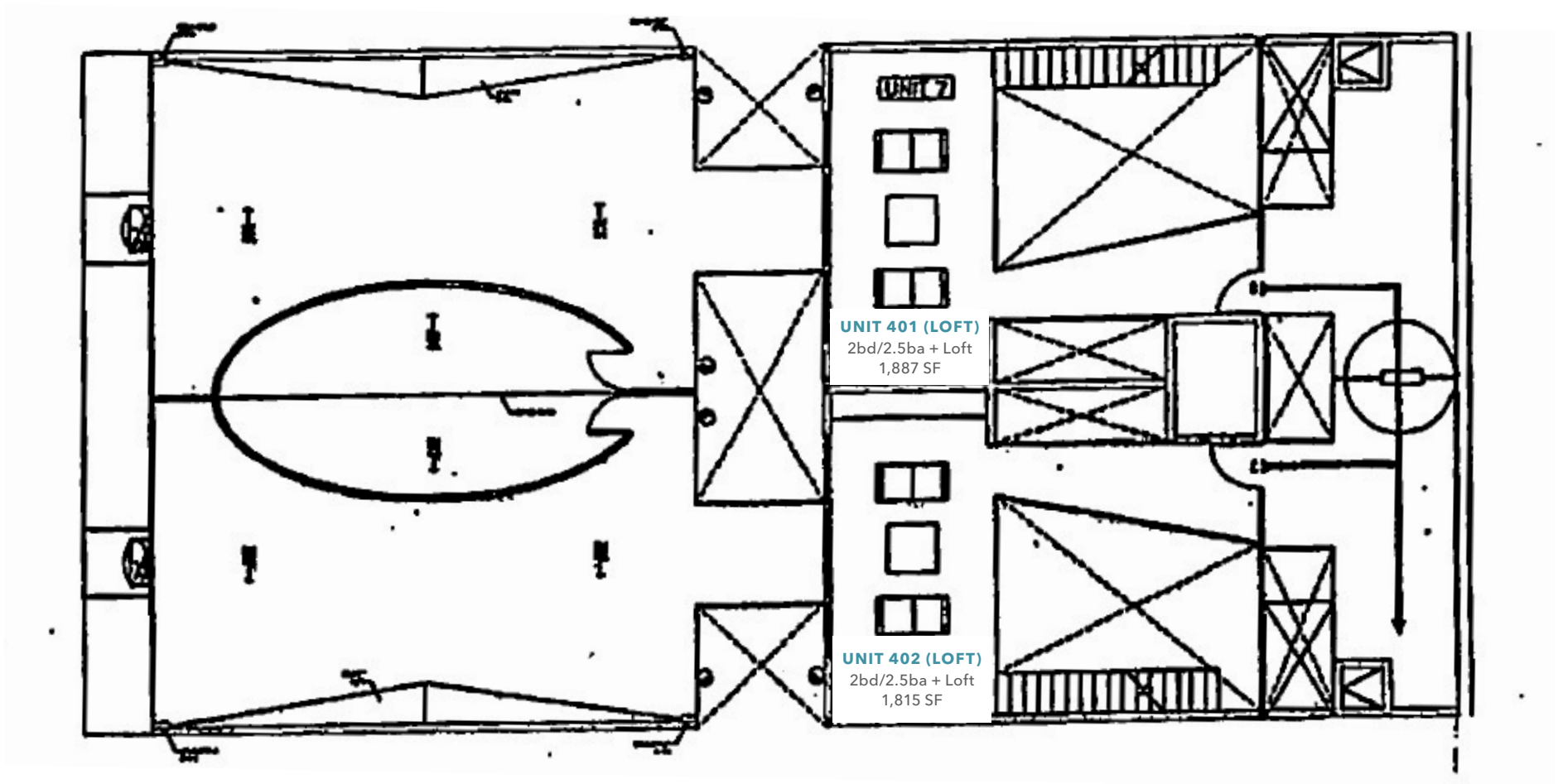
3RD FLOOR

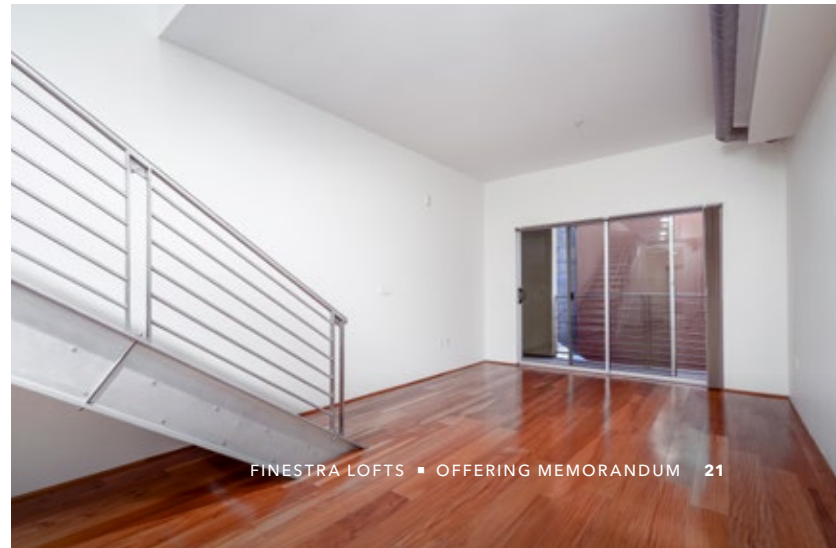


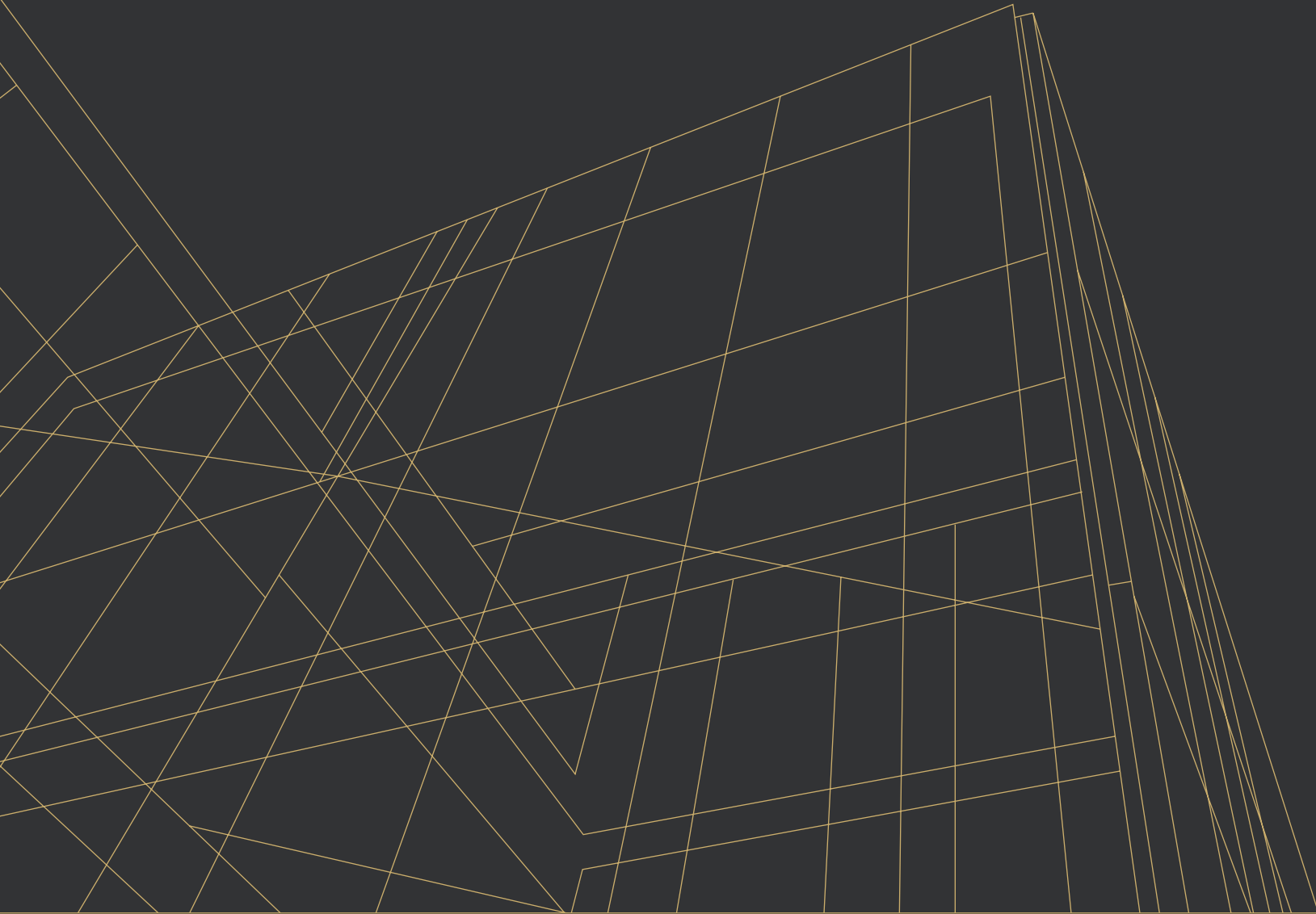
PENTHOUSE LOWER LEVEL



PENTHOUSE UPPER LEVEL







FINANCIALS

FINANCIALS

# Units	Unit Type	Sq. Ft.	Total Sq.Ft.	Actual Rent	\$/Sq.Ft.	Total Rent	Mkt Rent	\$/Sq.Ft.	Total Mkt
1	OFFICE/RETAIL	1007	1,007	\$2,699	\$2.68	\$2,699	\$3,200	\$3.18	\$3,200
4	2BD/2BA 2ND FLOOR	1233	4,931	\$3,353	\$2.72	\$13,410	\$3,700	\$3.00	\$14,800
2	2BD/2.5BA 3RD FLOOR	1630	3,259	\$4,058	\$2.49	\$8,115	\$4,200	\$2.58	\$8,400
2	2BD/2.5BA +LOFT	1850	3,700	\$4,873	\$2.63	\$9,745	\$5,000	\$2.70	\$10,000
9	Total/Avg	1,433	12,897	\$3,774	\$2.63	\$33,969	\$4,044	\$2.82	\$36,400

ANNUALIZED GROSS INCOME

\$407,628 **\$436,800**

Vac / Collect 3.00% Mkt Vacancy 3.00% (\$12,229) (\$13,104)

ADJUSTED GROSS INCOME

\$395,399 **\$423,696**

RUBS \$0 \$15,000

EFFECTIVE GROSS INCOME

2025 Actual EGI
\$343,898

\$395,399 **\$438,696**

Less Estimated Expenses:		\$/UNIT	2025 ACTUAL	
			EXPENSES	PROFORMA
Property Taxes	1.25114%	\$7,646	\$68,813	\$68,813
Fixed Assessment		\$385	\$3,468	\$3,468
Insurance		\$1,879	\$16,908	\$9,000
Controllable Expenses				
Administrative		\$436	\$3,922	\$2,000
Contract Services		\$512	\$4,612	\$4,612
Elevator Servicing		\$1,063	\$9,564	\$9,564
Off-Site Management	4.00%	\$2,368	\$21,312	\$16,948
Repairs/ Cleaning/ Maintenance/ Turnover		\$3,045	\$27,409	\$15,000
Utilities		\$4,238	\$38,143	\$38,143
Replacement Reserves/ CAPEX		\$500	\$51,700	\$4,500
			\$245,850	\$172,047
	Exp./unit:		\$27,317	\$19,116
	Exp/psf:		\$19.06	\$13.34
	Exp. % of SGI:		60.3%	42.2%
			\$223,352	\$172,047

NET OPERATING INCOME

\$223,352 **\$266,649**

INTEREST ONLY LOAN

Rate 30 6.00%

Debt Service \$3,300,000 @ \$198,000 \$198,000

CASH FLOW

\$25,352 **\$68,649**

Cash on Cash Return 1.15% 3.12%

Return on Equity 1.15% 3.12%

DCR 1.13 1.35

OFFERING SUMMARY

\$5,500,000

VALUATION

\$611,111

PRICE / UNIT

\$426

PRICE / RENTABLE SF

\$348

PRICE / GROSS BUILDING SF

DOWN PMT \$2,200,000

% DOWN 40%

IN-PLACE CAP 4.06%

IN-PLACE GRM 13.5

MARKET CAP 4.85%

MARKET GRM 12.6

INCOME & EXPENSE NOTES

In-Place Income & Expenses are based on the 2025 Year End Operating Statement unless otherwise noted below.

INCOME NOTES

UNIT SIZE	Unit size is based on average unit size on the Rent Roll dated May 2026. Buyer to verify.
IN PLACE RENT	From rent roll dated May 2026. Property is currently 100% occupied.
RUBS INCOME	Proform assumes \$15,000 per year total in RUBS collections. Approximately 40% of Total Utility Bills.
VACANCY	Underwritten at 3% per industry standard.

EXPENSE NOTES

PROPERTY TAXES	Calculated on millage rate of 1.25114%. Property is reassessed at time of sale
FIXED ASSESSMENTS	Based on the property tax bill for 2025/2026. Fixed assessments includes a Little Italy Maintenance for of \$3,437.20
MANAGEMENT	Professional, off-site management. Assumes 4.00% of collected rents, which is the industry average for this property size
REPLACEMENT RESERVES	Assumes \$500 per unit per year.





CONDO SALE PROJECTIONS

No.	Floor plan	Sq. Ft.	Price	Price/SqFt	Total Price
1	OFFICE/ RETAIL SPACE	1,007	\$595,000	\$591	\$595,000
4	2BD/2BA 2ND FLOOR	1,233	\$750,000	\$608	\$3,000,000
2	2BD/2.5BA 3RD FLOOR	1,630	\$1,100,000	\$675	\$2,200,000
2	2BD/2.5BA +LOFT	1,850	\$1,300,000	\$703	\$2,600,000
9	Totals	1,433	\$932,778	\$651	\$8,395,000

GROSS POTENTIAL SALES **\$8,395,000**

Purchase Price		(\$5,500,000)
Brokerage Costs	5% of Gross Sales	(\$419,750)
Improvement Costs	\$50,000/unit	(\$450,000)
White Report/ HOA		(\$50,000)
Carry Costs		(\$500,000)

DEVELOPER PROFIT **\$1,475,250**

Note: The owner is willing to carry back a loan on the property. Call Merrick Matricardi for more information 858.369.3085.

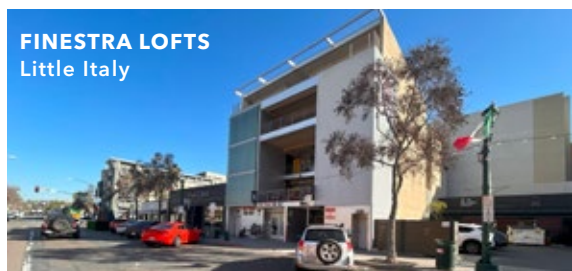




RENT & SALE COMPARABLES

SALE COMPARABLES

SUBJECT

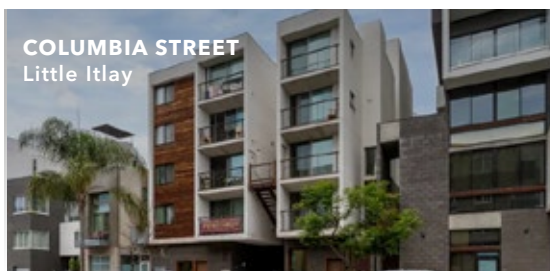


FINESTRA LOFTS
Little Italy

1943 INDIA STREET, LITTLE ITALY

DATE SOLD	For Sale
PRICE	\$5,500,000
PRICE / UNIT	\$611,111
PRICE / SF	\$426
CAP RATE	4.06%
GRM	13.5
UNITS	9 (including retail)
YEAR BUILT	2006
NOTES	

01



COLUMBIA STREET
Little Italy

1941-1945 COLUMBIA ST, LITTLE ITALY

DATE SOLD	5/4/2026
PRICE	\$7,800,000
PRICE / UNIT	\$433,333
PRICE / SF	\$623
CAP RATE	3.7%
GRM	14.7
UNITS	18
YEAR BUILT	2014
NOTES	10 parking spaces for 18 units

02



UPTOWN LOFTS
Hillcrest

3740 5TH AVENUE, HILLCREST

DATE SOLD	1/8/2026
PRICE	\$9,600,000
PRICE / UNIT	\$417,391
PRICE / SF	\$505
CAP RATE	5.1%
GRM	12.1
UNITS	23 Units + 1 Commercial
YEAR BUILT	2024
NOTES	8 parking spots for 24 units

03

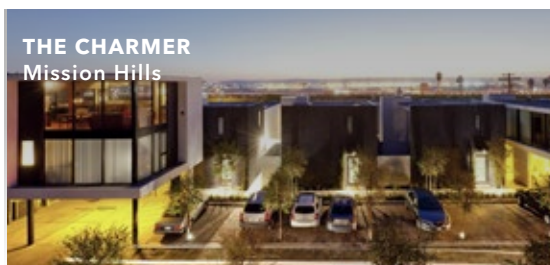


4TH & LAUREL
Bankers Hill

2426 FOURTH AVE, BANKERS HILL

DATE SOLD	11/7/2025
PRICE	\$18,100,000
PRICE / UNIT	\$489,189
PRICE / SF	\$704
CAP RATE	4.40%
GRM	13.5
UNITS	36 Units + 1 Live Work (avg 693 SF)
YEAR BUILT	2011
NOTES	Lender Short Sale

04



THE CHARMER
Mission Hills

3625 INDIA STREET, MISSION HILLS

DATE SOLD	4/10/2025
PRICE	\$12,750,000
PRICE / UNIT	\$531,250
PRICE / SF	\$542
CAP RATE	5.20%
GRM	not reported
UNITS	19 Units + 2 Live Work + 3 Commercial
YEAR BUILT	2011
NOTES	

05



LIBERTY ROW
Point Loma

3046 NIMITZ BLVD, POINT LOMA

DATE SOLD	12/31/2025
PRICE	\$4,225,000
PRICE / UNIT	\$469,444
PRICE / SF	\$711
CAP RATE	4.61%
GRM	14.2
UNITS	9 Units
YEAR BUILT	2024
NOTES	

06

THE CONTINENTAL
 Little Italy

320 W CEDAR, LITTLE ITALY

DATE SOLD	9/11/2023
PRICE	\$21,350,000
PRICE / UNIT	\$474,444
PRICE / SF	\$783
CAP RATE	4.25%
GRM	-
UNITS	45 + 1,585 SF Retail
YEAR BUILT	2019
NOTES	Off Market Sale

07

CONTOUR LOFTS
 Little Italy

2120 COLUMBIA ST, LITTLE ITALY

DATE SOLD	8/21/2023
PRICE	\$20,750,000
PRICE / UNIT	\$768,519
PRICE / SF	\$741
CAP RATE	2.90%
GRM	not reported
UNITS	27
YEAR BUILT	2019
NOTES	Loan Assumption

08

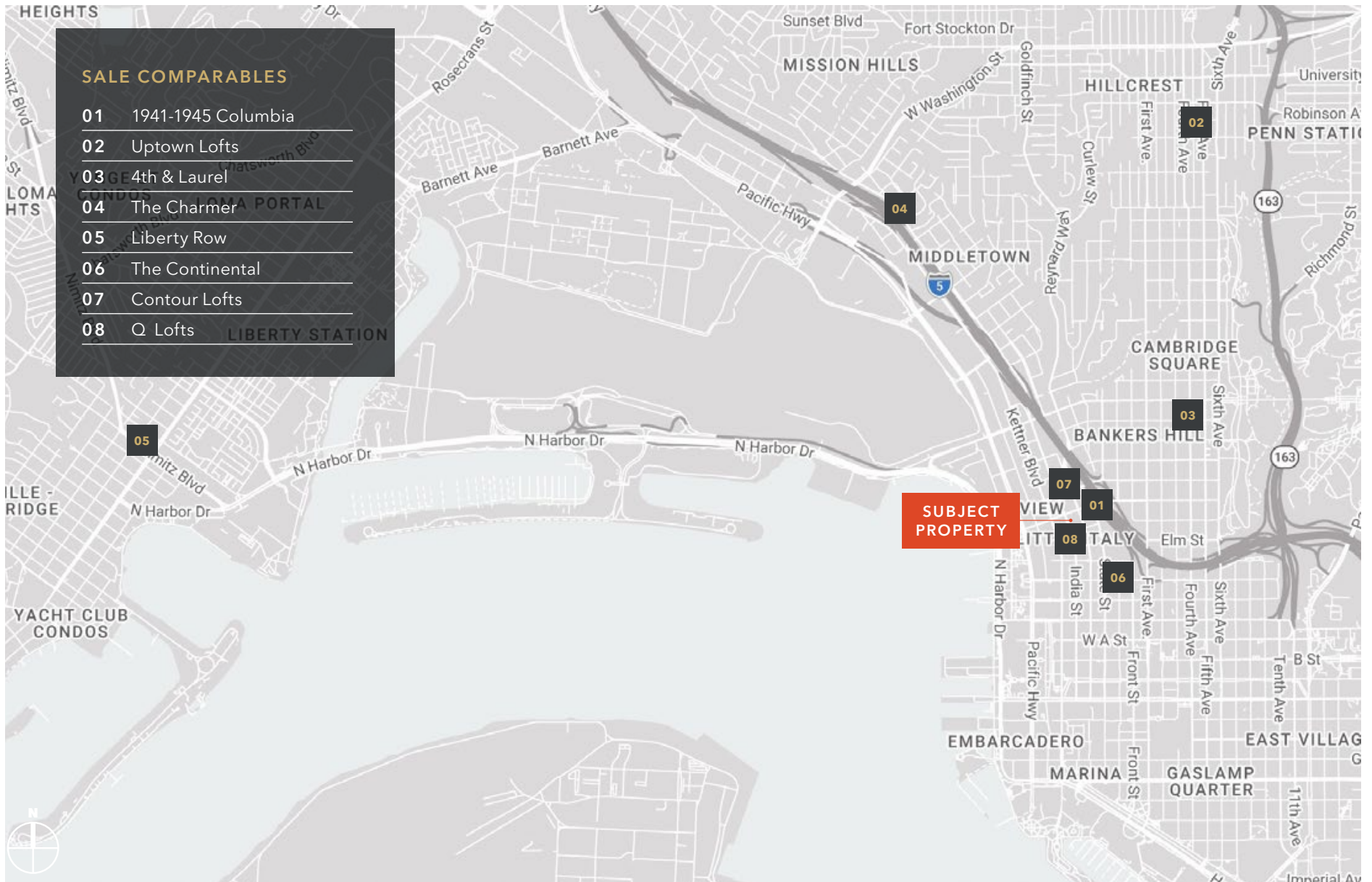
THE Q LOFTS
 Little Italy

710-750 W FIR ST, LITTLE ITALY

DATE SOLD	9/20/2023
PRICE	\$34,200,000
PRICE / UNIT	\$1,179,310
PRICE / SF	\$927
CAP RATE	not reported
GRM	not reported
UNITS	29 + Retail
YEAR BUILT	2010
NOTES	Includes 7,000-SF penthouse, office spaces, and 1st floor restaurants



SALE COMPARABLES



RENT COMPARABLES

SUBJECT



FINESTRA LOFTS

1943 India Street, Little Italy

UNITS	9
YEAR BUILT	2006
PARKING	Secured parking garage
AMENITIES	Common patio area, Secured entry

Unit Type	Size (SF)	Asking Rent	Rent \$/SF
2 BD / 2 BA	1,233	\$3,435	\$2.79
2 BD / 2 BA	1,630	\$4,075	\$2.50
2 BD / 2.5 BA + LOFT	1,850	\$4,873	\$2.63

01



IL PALAZZO

2040 Columbia St, San Diego, 92101

UNITS	108
YEAR BUILT	2004
PARKING	Secured parking garage
AMENITIES	Fitness center, Rooftop lounge, Secured entry

Unit Type	Size (SF)	Asking Rent	Rent \$/SF
2 BD / 1 BA	670	\$2,997	\$4.80
2 BD / 2 BA	782	\$3,040	\$3.89
2 BD / 2 BA	1,113	\$3,232	\$2.90

02



OLEA

2250 India Street, Little Italy

UNITS	30
YEAR BUILT	2014
PARKING	Underground parking
AMENITIES	Secured entry

Unit Type	Size (SF)	Asking Rent	Rent \$/SF
2 BD / 2 BA	921	\$3,595	\$

03



ELAN LUXO II

1907 Columbia St, Little Italy

UNITS	40
YEAR BUILT	2013
PARKING	Underground parking
AMENITIES	Secured entry

Unit Type	Size (SF)	Asking Rent	Rent \$/SF
2 BD / 1 BA	1,015	\$2,945	\$2.90
2 BD / 1 BA	1,040	\$3,570	\$3.43
2 BD / 2 BA	1,125	\$4,070	\$3.62

RENT COMPARABLES

SUBJECT



FINESTRA LOFTS

1943 India Street, Little Italy

UNITS	9
YEAR BUILT	2006
PARKING	Secured garage
AMENITIES	Common patio area, Secured entry

Unit Type	Size (SF)	Asking Rent	Rent \$/SF
2 BD / 2 BA	1,233	\$3,435	\$2.79
2 BD / 2 BA	1,630	\$4,075	\$2.50
2 BD / 2.5 BA + LOFT	1,850	\$4,873	\$2.63

04



VALENTINA BY ALTA

1919 Pacific Hwy, Little Italy

UNITS	110
YEAR BUILT	2019
PARKING	Secured garage
AMENITIES	Pool, Fitness center, Sky Lounge, Bike Storage

Unit Type	Size (SF)	Asking Rent	Rent \$/SF
2 BR / 2 BA	1,171	\$3,936	\$3.36
2 BR / 2 BA	1,322	\$5,318	\$4.02

05



1810 STATE

1810 State St, San Diego, CA 92101

UNITS	99
YEAR BUILT	2017
PARKING	Secured garage
AMENITIES	Spa, Rooftop patio

Unit Type	Size (SF)	Asking Rent	Rent \$/SF
2 BR / 2 BA	1,037	\$3,880	\$3.74
2 BR / 2 BA	1,234	\$3,975	\$3.22

06



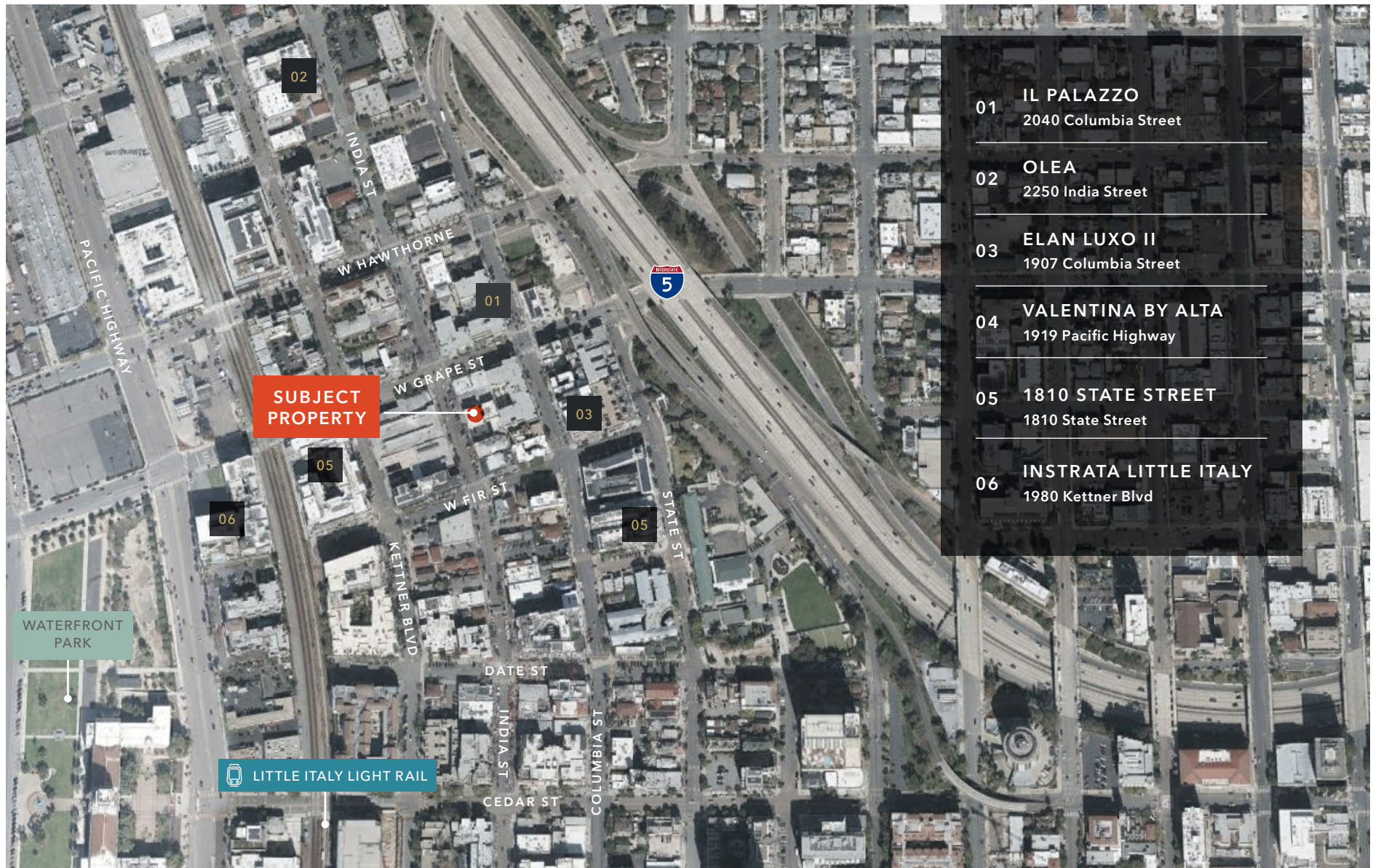
INSTRATA LITTLE ITALY

1980 Kettner Blvd, Little Italy

UNITS	199
YEAR BUILT	2014
PARKING	Secured garage
AMENITIES	Pool, Spa, Fitness, Golf Sim, Lounge

Unit Type	Size (SF)	Asking Rent	Rent \$/SF
2 BR / 2 BA	1,063	\$4,022	\$3.78
2 BR / 2 BA	1,180	\$4,255	\$3.61

RENT COMPARABLES MAP



CONDO COMPARABLES

CONDOMINIUM SALE COMPARABLES

Sale comparables for individual condominium units include all attached condo units within Little Italy with 1,000 square feet or more of living space and irrespective of year built or number of bedrooms/bathrooms. We excluded any units with unobstructed views on Pacific Highway or in high rise buildings (unit entry above ten stories). Sales are from October 2025-April 2026.

\$888,000

AVG SALE PRICE

\$697

AVG SALE PRICE /SF

35

AVG DAYS ON MARKET

Address	Type	SF	Year Built	Sale Price	SP/SF	Days on Market
1388 Kettner Blvd 803	2bd/2ba	1,241	2019	\$990,000	\$798	75
1494 Union 506	2bd/2ba	1,170	2007	\$750,000	\$641	27
1780 Kettner 513	2bd/2ba	1,692	2003	\$945,000	\$559	160
1608 India St 307	2bd/2ba	1,383	2003	\$895,000	\$647	13
1601 India 207	2bd/2ba	1,072	2003	\$799,000	\$745	9
1501 India Street 205	2bd/2.5ba	1,800	2002	\$1,050,000	\$583	54
801 W Hawthorn St 203	2bd/2.5ba	1,018	2004	\$620,000	\$609	36
1501 Front St 523	3bd/2ba	1,568	2004	\$975,000	\$622	12
1780 Kettner Blvd 106	1bd/2ba	1,208	2003	\$885,000	\$733	1
1750 Kettner Blvd 414	2bd/2.5ba	1,375	2003	\$1,100,000	\$800	27
1388 Kettner Blvd 311	1bd/1ba	1,016	2019	\$775,000	\$763	16
1240 India St 703	2bd/3ba	1,441	2003	\$1,089,000	\$756	24
1501 India St 608	1bd/2ba	1,049	2002	\$680,000	\$648	7
1601 India Street 307	2bd/2ba	1,002	2003	\$700,000	\$699	60
1388 Kettner Blvd 903	2bd/2ba	1,241	2019	\$1,060,000	\$854	14
AVERAGE	1BD/2BA	1,285	2006	\$887,533	\$697	35
Median	2bd/2ba	1,241	2003	\$899,000	\$724	24





LOCATION OVERVIEW





ONE OF SAN DIEGO'S MOST SOUGHT-AFTER SUBMARKETS

Known for its rich cultural heritage, diverse dining scene, and engaging community events, Little Italy is an affluent, highly walkable and vibrant submarket in San Diego County.

The residential real estate market has seen significant demand, with a mix of condos, apartments, and some single-family homes attracting young professionals, families, and retirees. As a result, property values have been on the rise, and rental prices generally exceed the San Diego average, reflecting the area's desirability.

The commercial sector thrives with numerous acclaimed restaurants, cafes, and boutiques, contributing to a lively atmosphere that draws both locals and tourists, especially during events like the Little Italy Festa and the Farmer's Market.

The neighborhood benefits from strong public transportation options, including nearby trolley

and bus services, which enhance accessibility. San Diego's International Airport is just two-miles from the subject.

Ongoing urban development projects are further enriching the area, introducing new mixed-use buildings that combine residential and commercial spaces. Little Italy hosts various cultural events throughout the year, fostering a strong sense of community and appealing to residents who enjoy its walkability, parks, and waterfront access.

Little Italy remains a dynamic neighborhood that successfully blends cultural richness with modern living, making it an attractive location for both investment and lifestyle.

99

WALK SCORE

\$850K

AVERAGE HOME VALUE

\$156K

AVG HOUSE HOLD INCOME

80%

COLLEGE DEGREE OR HIGHER

LITTLE ITALY MARKET OVERVIEW

Quality of Life

Little Italy, San Diego, offers a high quality of life characterized by a vibrant community atmosphere, rich cultural experiences, and diverse dining options. Residents enjoy walkable streets, beautiful parks, and waterfront access, all within a lively setting that hosts frequent events and markets, creating a strong sense of connection and engagement among neighbors.

Dining & Nightlife

Little Italy is known for its dining & nightlife. The neighborhood boasts an array of restaurants, ranging from casual eateries to upscale dining, with a strong emphasis on Italian cuisine. Iconic spots like Bencotto Italian Kitchen and Monello attract food enthusiasts, while seafood restaurants such as Ironside Fish & Oyster are popular for their fresh offerings.

Community Events/Spaces

Numerous events throughout the year include weekly farmers' markets, cultural festivals, and outdoor movie nights, fostering a strong sense of community engagement. The neighborhood features several parks and green spaces, such as Amici Park and the waterfront promenade, which provide areas for recreation, relaxation, and community gatherings.



ARTS & CULTURAL EVENTS

Little Italy's Farmers' Market

Every Saturday with fresh produce, organic fruits and vegetables, meats, flowers, home accessories, gifts and more. There are over 150 vendors and live music and performances.

ArtWalk (Spring & Fall)

ArtWalk, San Diego's premier arts and music cultural event with a variety of art booths and performances of artists, musicians and dancers. The event also includes a KidsWalk in Amici Park, where kids can create their own works of art.

Sicilian Festival (Fall)

This annual festival celebrates all things Sicilian filled with authentic Sicilian cuisine, traditional music, and a Sicilian heritage pavilion.

Taste of Little Italy (Spring)

The Taste of Little Italy is an annual event where ticket holders can sample appetizers, desserts and specialty beverages from a mix of traditional Italian restaurants and eclectic eateries.

West Coast Stickball Tournament (September)

The streets of Little Italy come alive with the good ol' American (East Coast) past-time: Stickball. Every year local teams come together to play for the right to call themselves the king of the block; the champions.

Annual Little Italy FESTA (October)

The largest Italian Festival on the West Coast, Little Italy's Festa is a San Diego tradition which spans two decades. The Festa attracts of 100,000 attendees and displays the rich culture of Italy and offers great entertainment, food, and art.

Trick-or-Treat on India Street (October)

A a family-fun and safe trick-or-treating experience, where children can trick or treat at local businesses and restaurants.

Tree Lighting & Christmas Village

Held on the first Saturday in December the annual Little Italy Tree Lighting & Christmas Village is an evening of music, free Italian cookies, cider & coffee, shopping and more.

PARKS & COMMUNITY SPACES

Amici Park

Amici Park features bocce ball courts, a small Amphitheater, basketball courts, kids play area, a large green playing field and a leash-free dog park.

Waterfront Park

Completed in 2014, the Waterfront Park It spans 12 acres by the bay and features grassy areas, gardens, picnic spaces, playground and interactive water fountain.

Piazza della Famiglia

The 10,000 SF public plaza was designed to emulate the grand piazzas found in Italy. The community gathering space hosts concerts and cultural events.



LOCATION OVERVIEW



LOCATION AMENITIES

EAT + DRINK

- 01 Above Ash Social
- 02 Allegro
- 03 Assenti's Pasta
- 04 Bar One
- 05 Barbusa
- 06 Bayside Kitchen + Bar
- 07 Bencotto Italian Kitchen
- 08 Bobboi Natural Gelato
- 09 Bottlecraft
- 10 Breakfast at Stephanie's
- 11 Bun & Patti
- 12 Buon Appetito
- 13 Surgeon at The Arbor
- 14 Burger Lounge
- 15 Camino Riviera
- 16 Civico 1845
- 17 Cloak and Petal
- 18 Coco Maya by Miss B's
- 19 Craft & Commerce
- 20 Crudo Ceviche & Oyster Bar
- 21 Davanti Enoteca
- 22 Extraordinary Desserts

EAT + DRINK

- 23 Filippi's Pizza Grotto
- 24 Fisher's
- 25 Frost Me Cafe & Bakery
- 26 Harbor Breakfast
- 27 Herb & Wood
- 28 Holy Paleta
- 29 Ironside Fish & Oyster Bar
- 30 Isola Pizza Bar
- 31 Jack in the Box
- 32 Juniper and Ivy
- 33 Kettner Exchange
- 34 King and Queen Cantina
- 35 Landini's Pizzeria
- 36 Mimmo's
- 37 Mona Lisa Italian Foods
- 38 Monello
- 39 Mr. Moto Pizza
- 40 Music Box
- 41 Nolita Hall
- 42 Nonna Italian Comfort Food
- 43 Pappaleco
- 44 Petrini's

EAT + DRINK

- 45 Pop Pops Paletas
- 46 Postino
- 47 Princess Pub & Grille
- 48 Puerto La Boca Argentinian ResT
- 49 Queenstown Public House
- 50 Ristorante Illando
- 51 RoVino Rotisserie + Wine
- 52 Salt & Straw
- 53 Shake Shack
- 54 Shino Sushi & Kappo
- 55 Sogno Di Vino
- 56 Solunto
- 57 Sorrento
- 58 The Crack Shack
- 59 The Glass Door
- 60 The Kebab Shop
- 61 The Yasa i
- 62 Underbelly
- 63 Vinarius Wine Bar & Restaurant
- 64 Vincenzo Cucina & Lou
- 65 Watercolors
- 66 Zinqué
- 67 Zucchero

CAFFEINE

- 01 AMICIBAR
- 02 Bird Rock Coffee Roasters
- 03 Caffè Italia
- 04 Influx
- 05 James Coffee Co.
- 06 Parakeet Cafe & Juicery
- 07 Starbucks

BREWERIES, BARS & TASTING ROOMS

- 01 3 Punk Ales
- 02 Ballast Point Tasting Room
- 03 Bolt Brewery
- 04 Born & Raised
- 05 M Winehouse
- 06 Pali Wine Co. Winery Tasting Room
- 07 Vino Carta
- 08 Waterfront Bar & Grill

LITTLE ITALY LOCATION

Little Italy is considered to be one of San Diego's hottest neighborhoods. The surge in interest is tied to the area's reputation for exciting nightlife, dining and exploding arts. Increasingly boutique stores, restaurants and other businesses are joining the established community. Little Italy's strategic cultural location and easy access to Interstate 5 and all points of interest in San Diego are important factors to the area's appeal. Recent redevelopment and multifamily construction has rapidly increased, as many seasoned developers many seasoned developers recognize the transformative nature of the area.



Little Italy has been featured multiple times as one of the best neighborhoods in San Diego Magazine's annual readers' poll.



TRANSPORTATION

San Diego offers many modes of public transportation, providing travelers with economical and eco-friendly options to explore the region, including public buses, the San Diego Trolley, COASTER, SPRINTER, Pacific Surfliner, and Pedicabs. Two of the most used is the San Diego Trolley & the city's own international airport.

SAN DIEGO TROLLEY

Finestra Lofts is walking distance (5 blocks or 0.3 miles) from the Little Italy Trolley Station, which is served by the Green Line of the MTS Trolley.

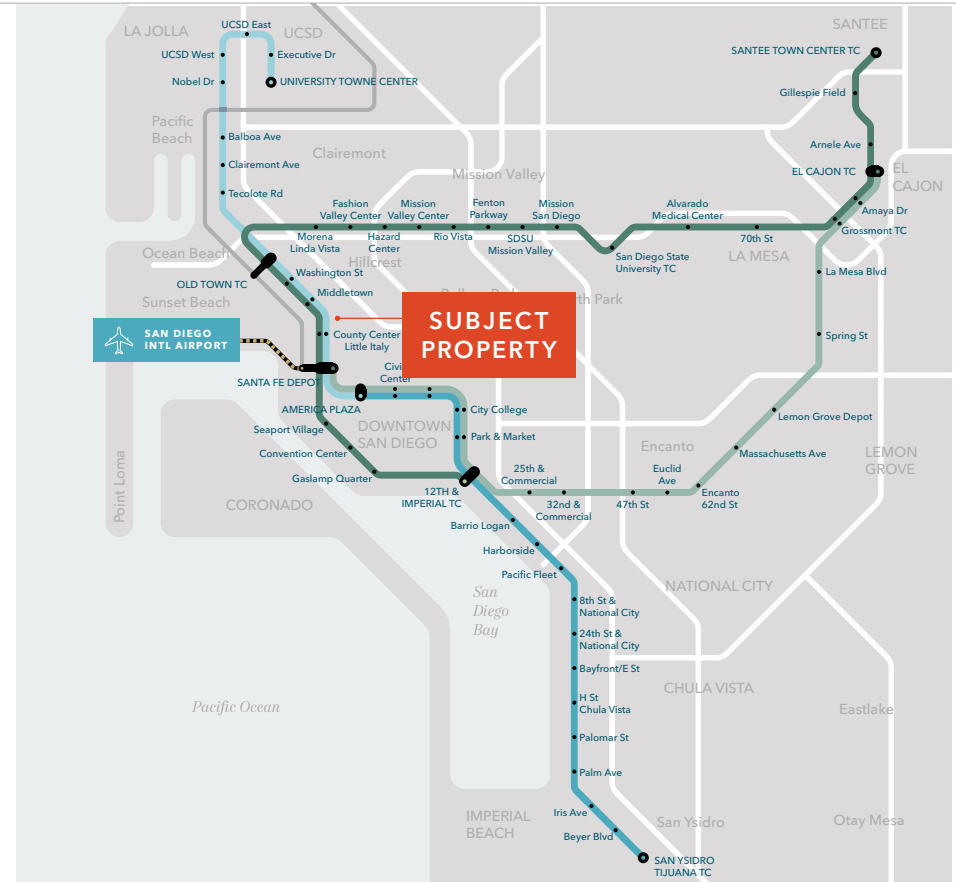
The San Diego Trolley provides convenient services from key locations downtown, including the Santa Fe Depot and the San Diego Convention Center, crisscrossing through downtown and out to various locations like Old Town, Mission Valley, El Cajon, Santee and San Ysidro, which is on the Mexican border. The new University of California San Diego (UCSD) Blue Line trolley extension also expands service northward to Clairemont, the UCSD/La Jolla area and the Westfield University City shopping center.

The Trolley line connects to Amtrak's Pacific Surfliner Trains and North County's COASTER train at the Santa Fe Depot station.










The San Diego Trolley provides traffic-free commutes to the numerous amenities around the city.

SAN DIEGO INTERNATIONAL AIRPORT

The San Diego International Airport (SAN) is less than two miles from the subject and provides commercial air transportation to roughly 20 million passengers annually. The two terminals at SAN service 18 airlines which connect to 60 nonstop destinations worldwide.



SAN DIEGO TROLLEY ROUTES

-  American Plaza-San Ysidro/Tijuana TC
-  Blue Line Extension-San Ysidro/Tijuana TC to UCSD
-  Gillespie Field-Santa Fe Depot
-  Santee Town Center-12th & Imperial TC
-  Normal Station
-  Interchange Station
-  Terminal Station
-  MTS Bus Route 992 to Airport
-  COASTER & Amtrak Pacific Surfliner to Points North

LITTLE ITALY DEMOGRAPHICS

POPULATION

	Little Italy Submarket
2024 TOTAL	6,267
2029 PROJECTION	7,082
2020 CENSUS	5,827
PROJECTED GROWTH 2024 - 2029	2.48%
MEDIAN AGE 2024	36.8

EMPLOYMENT & INCOME

2024 AVERAGE HH INCOME	\$156,361
2029 AVERAGE HH INCOME	\$171,947
2024 PER CAPITA INCOME	\$105,235
TOTAL EMPLOYEES 2024	5,498

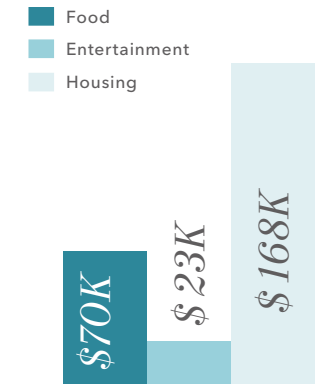
HOUSEHOLDS

2024 HOUSING UNITS	4,941
2029 PROJECTED HOUSING UNITS	5,581
2020 CENSUS	747
2024 AVERAGE HH SIZE	1.46
OWNER-OCCUPIED 2024	17.5%
AVERAGE HOME VALUE 2024	\$846,672

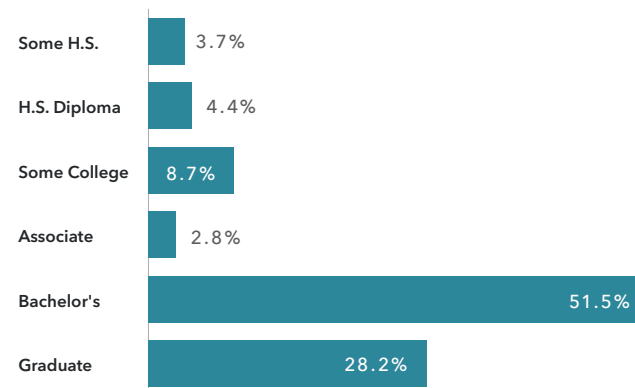
AVERAGE HOUSEHOLD INCOME



CONSUMER SPENDING

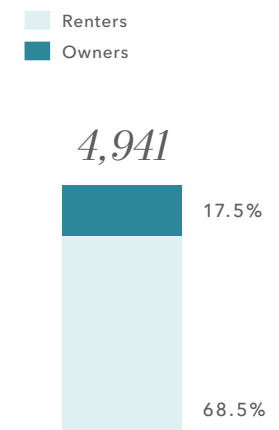


EDUCATION (2024)



Data Source: ©2024 ESRI

HOUSING UNITS



Exclusively listed by

MERRICK MATRICARDI

858.369.3085

merrick.matricardi@kidder.com

LIC N°01348986

ERIC COMER

858.369.3084

eric.comer@kidder.com

LIC N° 00842230

JIM NEIL

858.369.3083

jim.neil@kidder.com

LIC N° 01352736

KIDDER.COM

