

AVAILABLE FOR LEASE

3820 Merton Dr

NORTH HILLS PROFESSIONAL PARK



Welcome to North Hills Professional Park, offering a wide range of office and medical office space. The property is conveniently located off Six Forks Rd, neighboring the North Hills Shopping districts.

PROPERTY HIGHLIGHTS

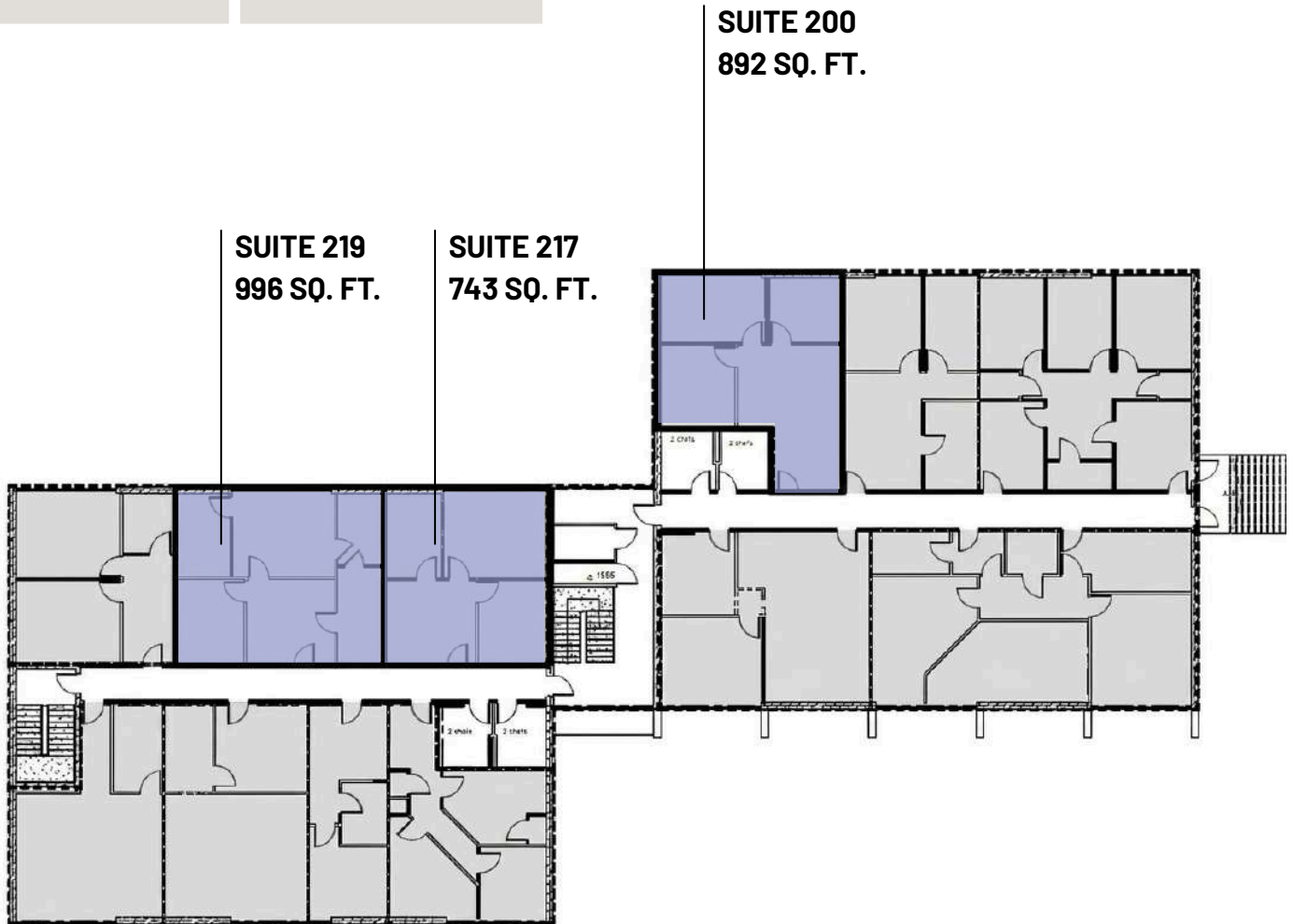
- Easy access to the beltline and Six Forks
- Ample parking for patrons and staff
- Walking distance to North Hills
- Comfortable space with lobby area
- **Rental Rate: \$26.50-\$30.00 SF FS**

CONTACT

Tyler Christensen, Broker
(C) 828.999.9459
tchristensen@atlasstark.com

Floorplan

SUITE	SIZE
Suite 200	892 SF
Suite 217	743 SF
Suite 219	996 SF



NEIGHBORHOOD OVERVIEW



LOCAL AMENITIES





CONTACT BROKER

Tyler Christensen, Broker
(C) 828.999.9459
tchristensen@atlasstark.com

1020 E Whitaker Mill Road, Suite 110
Raleigh, NC 27608



ATLAS STARK