

1 SUITE WITH YARD AVAILABLE

FOR LEASE

±117,780 SF INDUSTRIAL SPACE

2225 S. 43RD AVENUE | SUITE 1 | PHOENIX | AZ

AVAILABLE NOW
±117,780 SF (SUITE 1)

S. 43RD AVE.

W. GIBSON LN

FOR MORE INFORMATION, CONTACT:

TREVOR MCKENDRY
Executive Vice President
P: 602.575.2332 | F: 602.296.0819
tmckendry@daumcre.com

CHRIS ROGERS
Executive Vice President
P: 602.575.2309 | F: 602.296.0819
crogers@daumcre.com

NICK REINHARDT
Associate Vice President
P: 602.575.2314 | M: 602.501.4279
nreinhardt@daumcre.com

NICK FAJARDO
Associate
P: 602.575.2322 | M: 972.400.6707
nfajardo@daumcre.com

D/AQ Corp. #01129558. Maps Courtesy ©Google & ©Microsoft. Although all information is furnished regarding for sale, rental or financing is from sources deemed reliable, such information has not been verified and no express representation is made nor is any to be implied as to the accuracy thereof, and it is submitted subject to errors, omissions, changes of price, rental or other conditions, prior sale, lease or financing, or withdrawal without notice.

OWNED BY:

mapletree

LEASING BY:

DAUM
COMMERCIAL REAL ESTATE SERVICES

FOR LEASE

±117,780 SF INDUSTRIAL SPACE

2225 S. 43RD AVENUE | SUITE 1 | PHOENIX | AZ

PROPERTY HIGHLIGHTS



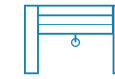
154'
Concrete
Truck Court



Secured
Storage Yard



Heavy
Power



4
Grade Level
Doors



PROPERTY OVERVIEW : SUITE 1

- Available: ±117,780 SF
- Office: ±7,373 SF
- Clear Height: 26'-28'
- Suite Power: 1,300 Amps
277/480V
- Column Spacing: 40' x 44'
- Sprinklers: Wet
- Dock Doors: 15
- Grade Level: 4
 - (1) 22' x 16'
 - (1) 12' x 14'
 - (2) 14' x 14'
- Cooling: EVAP
- A-1 Zoning – City of Phoenix
- Auto Parking: 124
- ±28,500 Secured Yard



D/AQ Corp. #01129558. Maps Courtesy ©Google & ©Microsoft. Although all information is furnished regarding for sale, rental or financing is from sources deemed reliable, such information has not been verified and no express representation is made nor is any to be implied as to the accuracy thereof, and it is submitted subject to errors, omissions, changes of price, rental or other conditions, prior sale, lease or financing, or withdrawal without notice.

2

OWNED BY:

maple*tree*

LEASING BY:

DAUM
COMMERCIAL REAL ESTATE SERVICES

FOR LEASE
±117,780 SF INDUSTRIAL SPACE
2225 S. 43RD AVENUE | SUITE 1 | PHOENIX | AZ

AERIAL/PHOTOS



3

D/AQ Corp. #01129558. Maps Courtesy ©Google & ©Microsoft. Although all information is furnished regarding for sale, rental or financing is from sources deemed reliable, such information has not been verified and no express representation is made nor is any to be implied as to the accuracy thereof, and it is submitted subject to errors, omissions, changes of price, rental or other conditions, prior sale, lease or financing, or withdrawal without notice.

OWNED BY:

mapletree

LEASING BY:

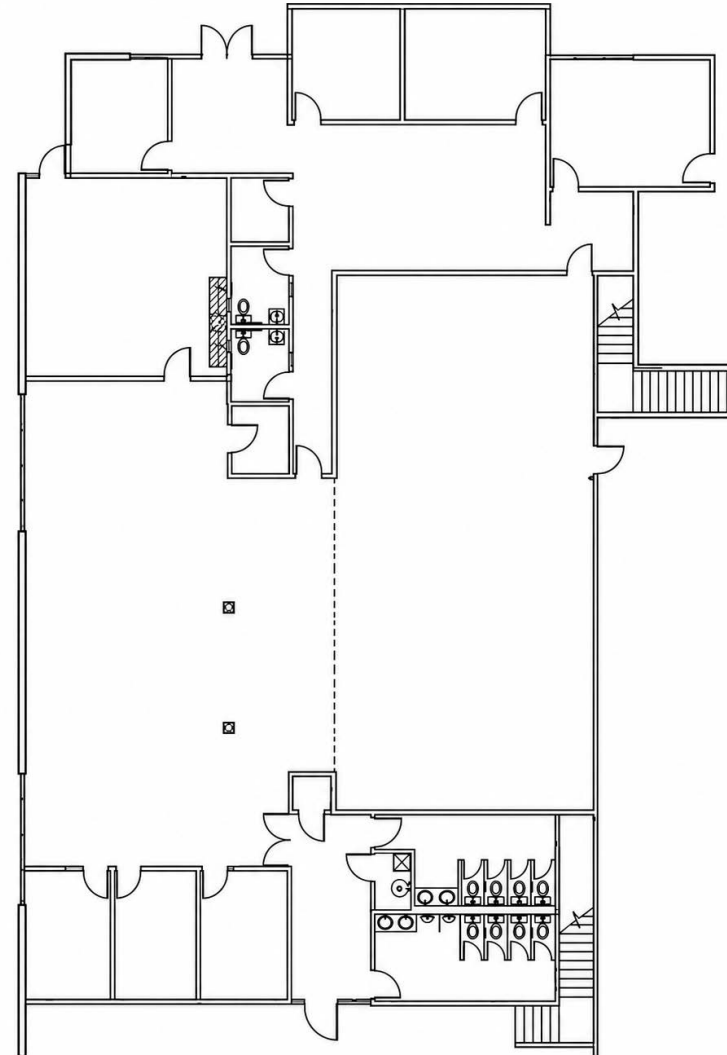
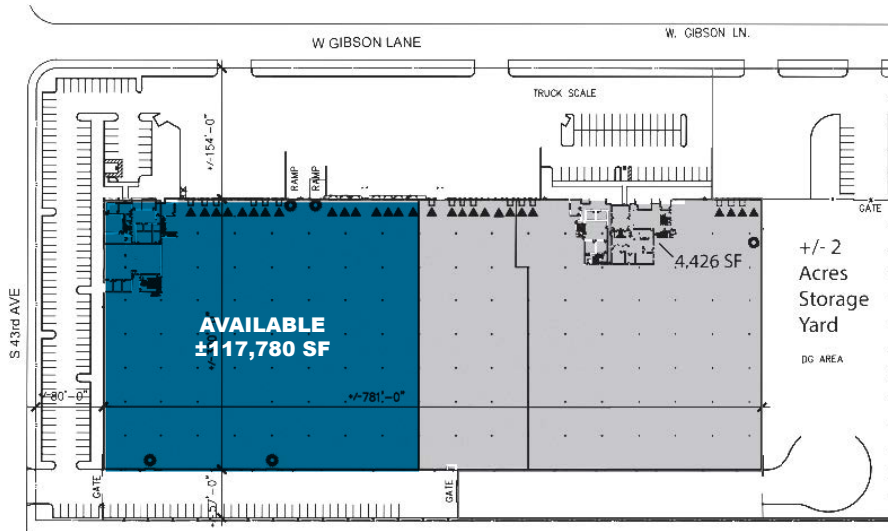
DAUM
COMMERCIAL REAL ESTATE SERVICES

FOR LEASE

±117,780 SF INDUSTRIAL SPACE

2225 S. 43RD AVENUE | SUITE 1 | PHOENIX | AZ

SITE PLAN & OFFICE FLOOR PLAN



*ALL MEASUREMENTS ARE APPROXIMATE AND ARE NOT TO SCALE. MEASUREMENTS ARE INTERIOR MEASUREMENTS, FLOOR PLAN DOES NOT SHOW ALL IMPROVEMENTS.

OWNED BY:

mapletree

LEASING BY:

DAUM
COMMERCIAL REAL ESTATE SERVICES

FOR LEASE

±117,780 SF INDUSTRIAL SPACE

2225 S. 43RD AVENUE | SUITE 1 | PHOENIX | AZ

AMENITIES MAP



DRIVE TIMES		
Loop 202	2.7 Miles	6 Mins
I-10	2.5 Miles	8 Mins
I-17	3.3 Miles	8 Mins

FOR LEASE

±117,780 SF INDUSTRIAL SPACE

2225 S. 43RD AVENUE | SUITE 1 | PHOENIX | AZ

FOR MORE INFORMATION, CONTACT:

TREVOR MCKENDRY

Executive Vice President
P: 602.575.2332 | F: 602.296.0819
tmckendry@daumcre.com

CHRIS ROGERS

Executive Vice President
P: 602.575.2309 | F: 602.296.0819
crogers@daumcre.com

NICK REINHARDT

Associate Vice President
P: 602.575.2314 | M: 602.501.4279
nreinhardt@daumcre.com

NICK FAJARDO

Associate
P: 602.575.2322 | M: 972.400.6707
nfajardo@daumcre.com

Although all information is furnished regarding for sale, rental or financing from sources deemed reliable, such information has not been verified and no express representation is made nor is any to be implied as to the accuracy thereof, and it is submitted subject to errors, omissions, changes of price, rental or other conditions, prior sale, lease or financing, or withdrawal without notice. D/AQ Corp. # 01129558

