

NORTH PARK

34

BUILDING 26

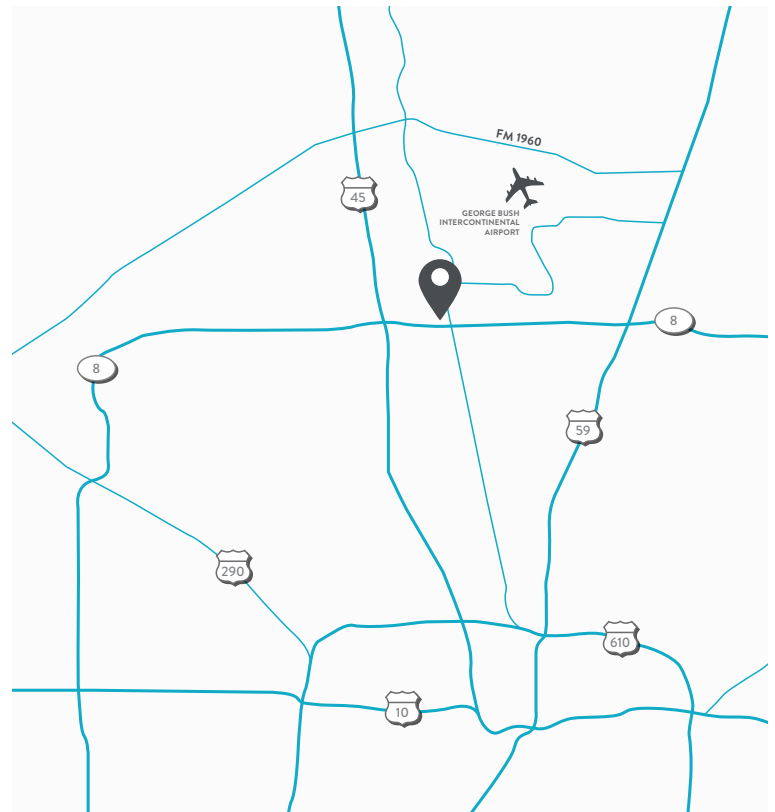
747 BRADFIELD RD.



NORTH PARK 34 is strategically located between The Woodlands and Bush Intercontinental Airport. Location allows for easy access to I-45, Beltway 8 and the Hardy Toll Road via FM 1960.

PROPERTY FEATURES

- 865,000 SF business park
- Suites ranging from 1,500 - 40,000 SF
- Diverse space layouts and loading configurations
- Ample surface parking
- Newly painted buildings
- Renovated landscaping



FOR LEASING INFORMATION CONTACT

BOONE SMITH | 713.300.0267 | boone.smith@streamrealty.com
ABRAHAM RICHARDSON | 713.300.0329 | abraham.richardson@streamrealty.com
MEG ZSCHAPPEL | 713.300.0284 | meg.zschappel@streamrealty.com

ARDEN | LOGISTICS
PARKS

STREAM



BUILDING 26
SUITE 747 - 2,566 SF



Hardy Toll Road

W Hardy Rd.

Building 26

Greens Bayou

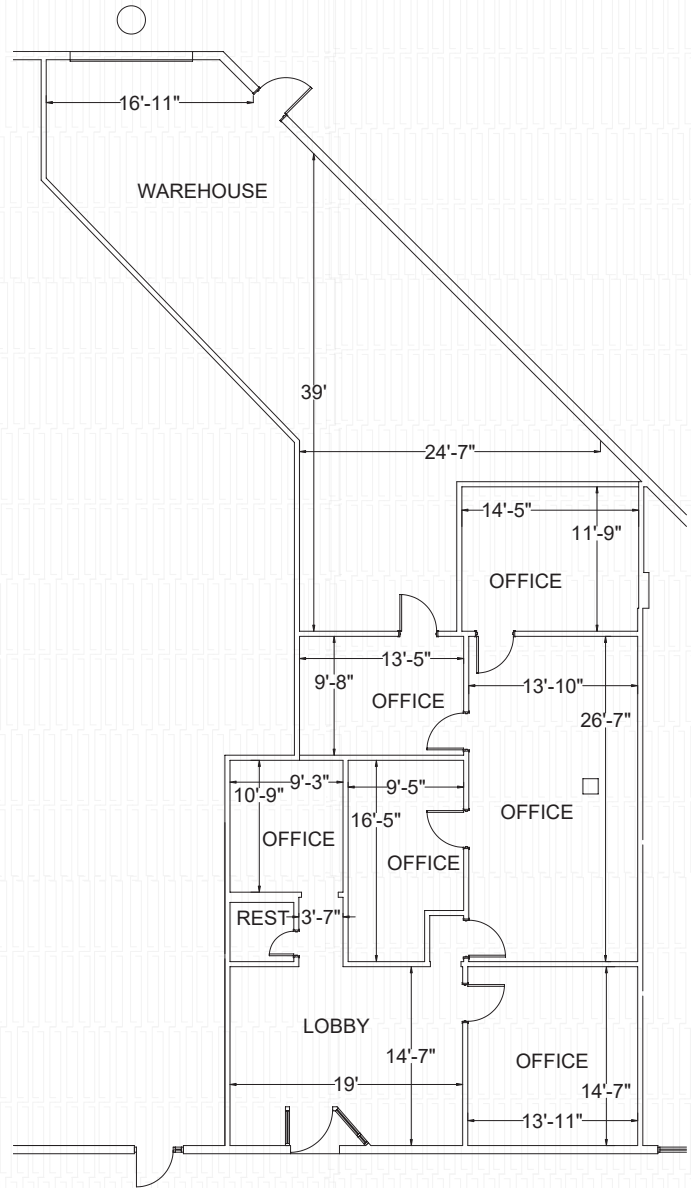
FOR LEASING INFORMATION CONTACT

BOONE SMITH | 713.300.0267 | boone.smith@streamrealty.com
ABRAHAM RICHARDSON | 713.300.0329 | abraham.richardson@streamrealty.com
MEG ZSCHAPPEL | 713.300.0284 | meg.zschappel@streamrealty.com





BUILDING 26
SUITE 747 - 2,566 SF



- SUITE FEATURES**
- 2,566 SF
 - 1,556 SF office
 - 1,010 SF warehouse
 - 10' clear height
 - 1 grade-level door
 - Rear-load configuration

FOR LEASING INFORMATION CONTACT

BOONE SMITH | 713.300.0267 | boone.smith@streamrealty.com
 ABRAHAM RICHARDSON | 713.300.0329 | abraham.richardson@streamrealty.com
 MEG ZSCHAPPEL | 713.300.0284 | meg.zschappel@streamrealty.com

