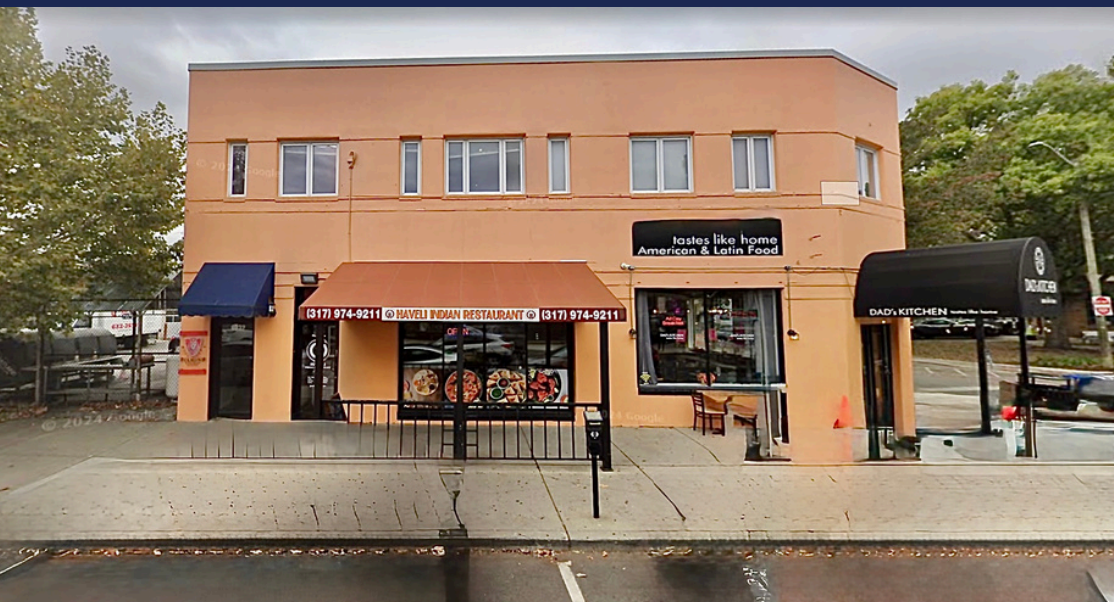


# Broad Ripple Office Space For Lease



## 6332 Guilford Ave Indianapolis, Indiana 46220



### PROPERTY OVERVIEW

6 creative office spaces available

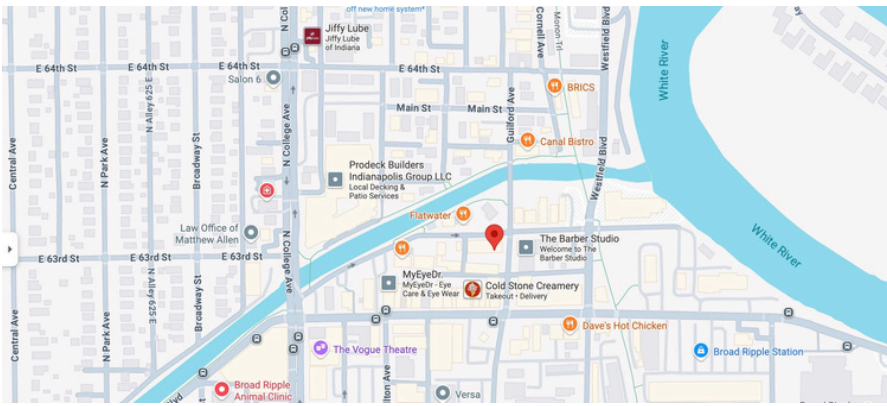
Located in the heart of Broad Ripple, Indianapolis

### PROPERTY HIGHLIGHTS

- 2<sup>nd</sup> floor prime location, 2 patios, overlooking upscale and high end restaurants and lounges
- Near Monon Trail and Broad Ripple Canal Walk
- 6 Offices, can be leased individually or as a whole user
- New AC Unit
- 2 Outdoor Patios on the 2nd floor
- Utilities included
- Available mid-late September 2025

### SPACE AVAILABILITY

- + Term: Negotiable
- + Rent Type: Gross
- + Space Use: Office/Retail



For more information, please contact:

Hamada Ibrahim  
Hamada@hsicg.com  
(317) 496-5858

Kelsey Scheibert  
Kelsey@hsicg.com  
(317) 432-1469

