

Available Acres 0.62

Land For Lease

Available SF 27,200



Address: 1223-1237 E 58th Pl, Los Angeles, CA 90001

Cross Streets: Slauson Ave/Hooper Ave

Paved Storage Yards For Vehicles or Materials
 Divisible to 13,600 SF
 3 Separate Wide Curb Cut Entrances
 Unincorporated Los Angeles County Location
 Approximately 1.5 Miles East of 110 Fwy Slauson Ave Ramps
 Good Proximity to Downtown LA and Vernon

Lease Rate/Mo:	\$13,056	Available Acres:	0.62 Ac	Gas:		Specific Use:	Industrial
Lease Rate/SF:	\$0.48	Available SF:	27,200 SF	Water:		Zoning:	IM
Lease Type:	Gross	Building SF:	0 SF	Sewer:	Yes	Rail Service:	No
Lease Terms:	1-3 years w/Periodic COLA's	Yard:	Fenced / Paved	Electric:		Market Area:	Outlying Los Angeles
Sale Price/SF:	NFS			Fiber:		APN:	6008-002-021 & 022
Sale Price:	NFS						

Listing Company: Dorin Realty Company
Agents: [Mark Whitman 213-627-0007](mailto:MarkWhitman@DorinRealty.com)

Listing #: 6a3ecf84b209110b88842229 **Listing Date:** 06/26/2026 **FTCF:** CB250N000S000

Notes: All details must be verified. AKA 1226 & 1236 E Slauson Ave. Water and sewer possible.

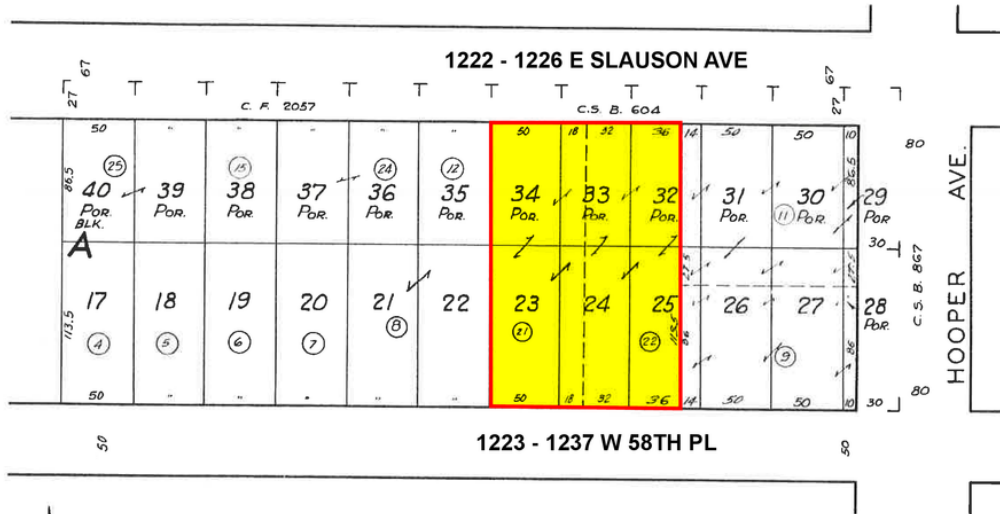


Mark Whitman
 mwhitman@dorinrealty.com
 213-627-0007



6008 2
SCALE 1" = 60'

1-18-65
8-19-65
11-27-55
3-2-57
12-5-60
1-6-62
720216
#1037303



FOR PREV. ASSM'T. SEE
6008-2

ASSESSOR'S MAP
COUNTY OF LOS ANGELES, CALIF.



Mark Whitman
mwhitman@dorinrealty.com
213-627-0007

AIRCR Powered by **MOODY'S**