

**INDUSTRIAL FACILITIES
SLOUGH STREET
MISSISSAUGA**

2706
±8,144 SQ. FT.

2710
±12,115 SQ. FT.
LEASED

2700
±15,911 SQ. FT.
LEASED

2696
±9,017 SQ. FT.

FOR LEASE

FOR MORE INFORMATION PLEASE CONTACT:

PHILLIP CHEUNG*
Senior Vice President
416 798 6243
phillip.cheung@cbre.com

EVAN S. WHITE*
Executive Vice President
416 798 6232
evan.white@cbre.com

*Sales Representative

CBRE



PROPERTY DETAILS

	2696	2700	2706 UNIT 1	2710
Office:	20%	<i>LEASED</i>		5%
Warehouse:	80%	<i>LEASED</i>		95%
Total Size:	±9,017 Sq. Ft.	±15,911 Sq. Ft.	±8,144 Sq. Ft.	±12,115 Sq. Ft.
Asking Rate:	\$5.00 Net per Sq. Ft.			
TMI (2017 EST.):	\$3.70 per Sq. Ft.			
Clear Height:	16'			
Shipping:	2 Truck level doors	4 Truck level doors 1 Drive-in door	1 Truck level door	3 Truck level doors
Possession:	November 1, 2017	July 1, 2017		
Zoning:	E2			
Features:	<ul style="list-style-type: none"> • Close proximity to Major Highways • Minutes from Pearson International Airport 			



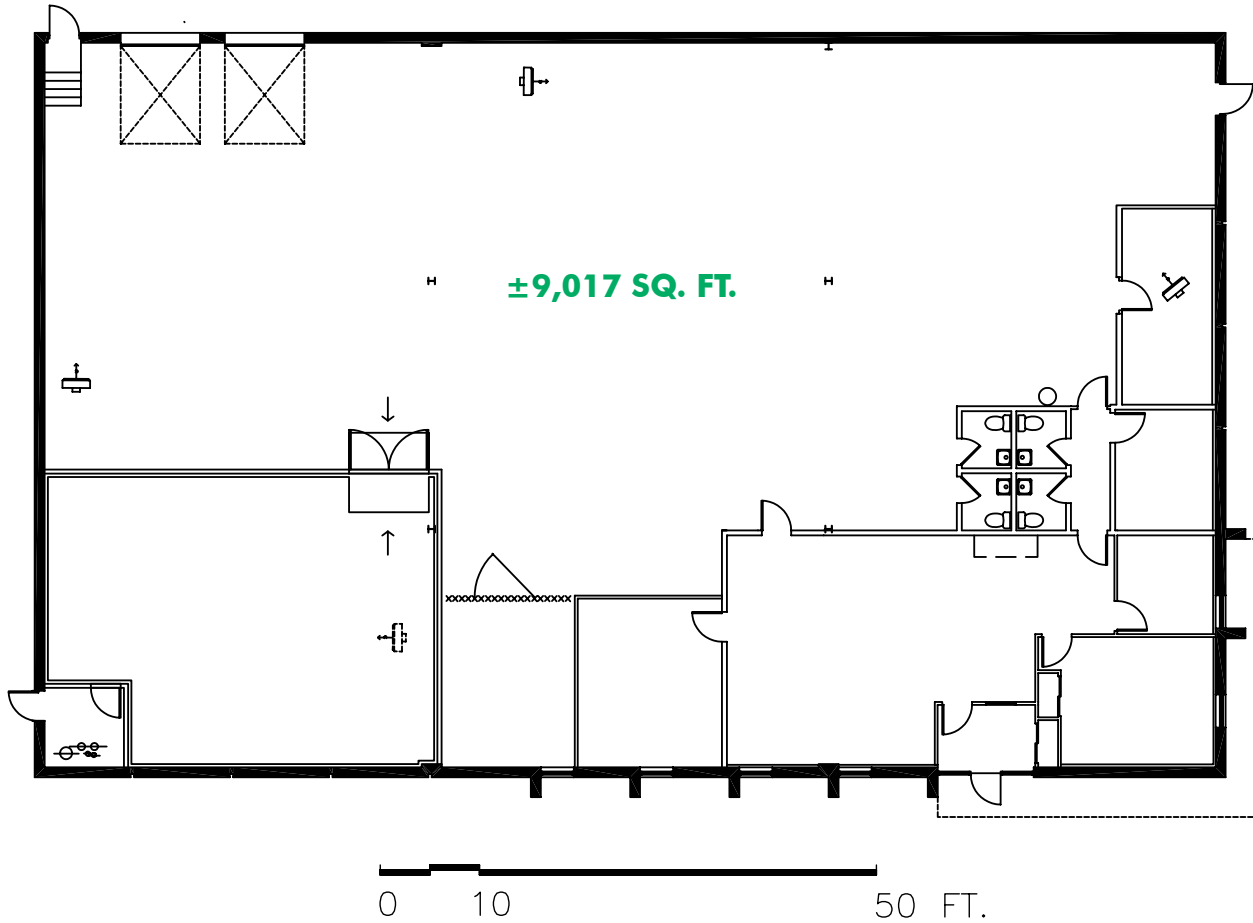
PHILLIP CHEUNG*
 Senior Vice President
 416 798 6243
 phillip.cheung@cbre.com

EVAN S. WHITE*
 Executive Vice President
 416 798 6232
 evan.white@cbre.com

*Sales Representative



FLOOR PLAN
2696 SLOUGH STREET



PHILLIP CHEUNG*
Senior Vice President
416 798 6243
phillip.cheung@cbre.com

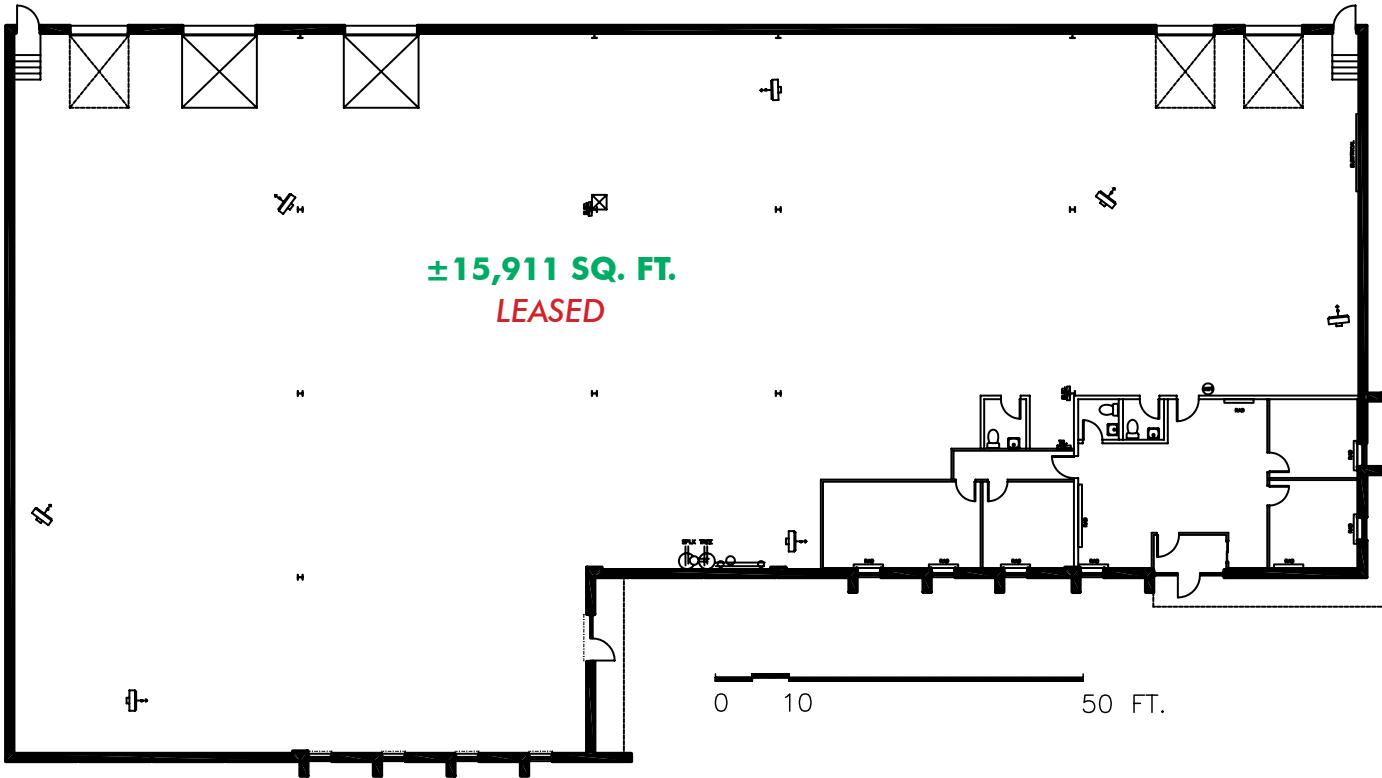
EVAN S. WHITE*
Executive Vice President
416 798 6232
evan.white@cbre.com

*Sales Representative

CBRE



FLOOR PLAN
2700 SLOUGH STREET



PHILLIP CHEUNG*

Senior Vice President
416 798 6243
phillip.cheung@cbre.com

EVAN S. WHITE*

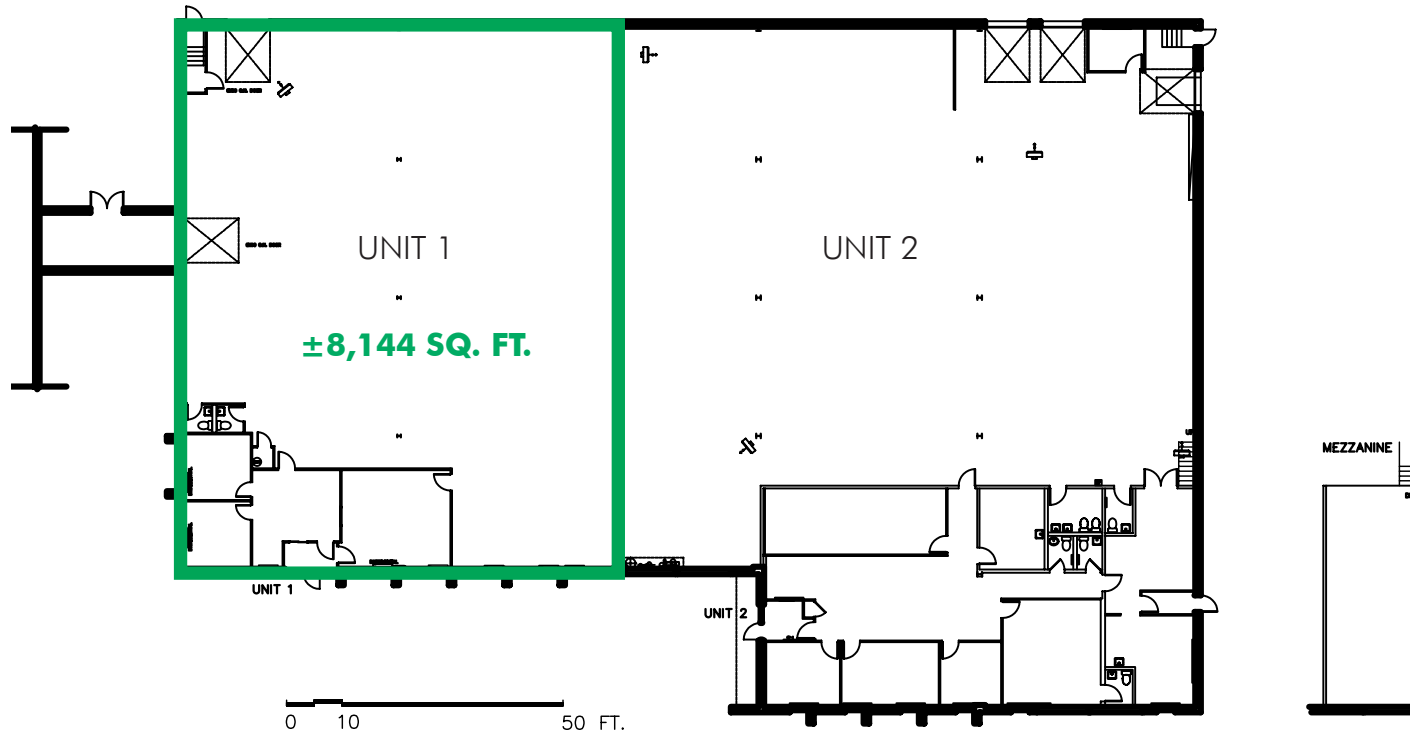
Executive Vice President
416 798 6232
evan.white@cbre.com

*Sales Representative

CBRE



FLOOR PLAN
2706 SLOUGH STREET UNIT 1



PHILLIP CHEUNG*
Senior Vice President
416 798 6243
phillip.cheung@cbre.com

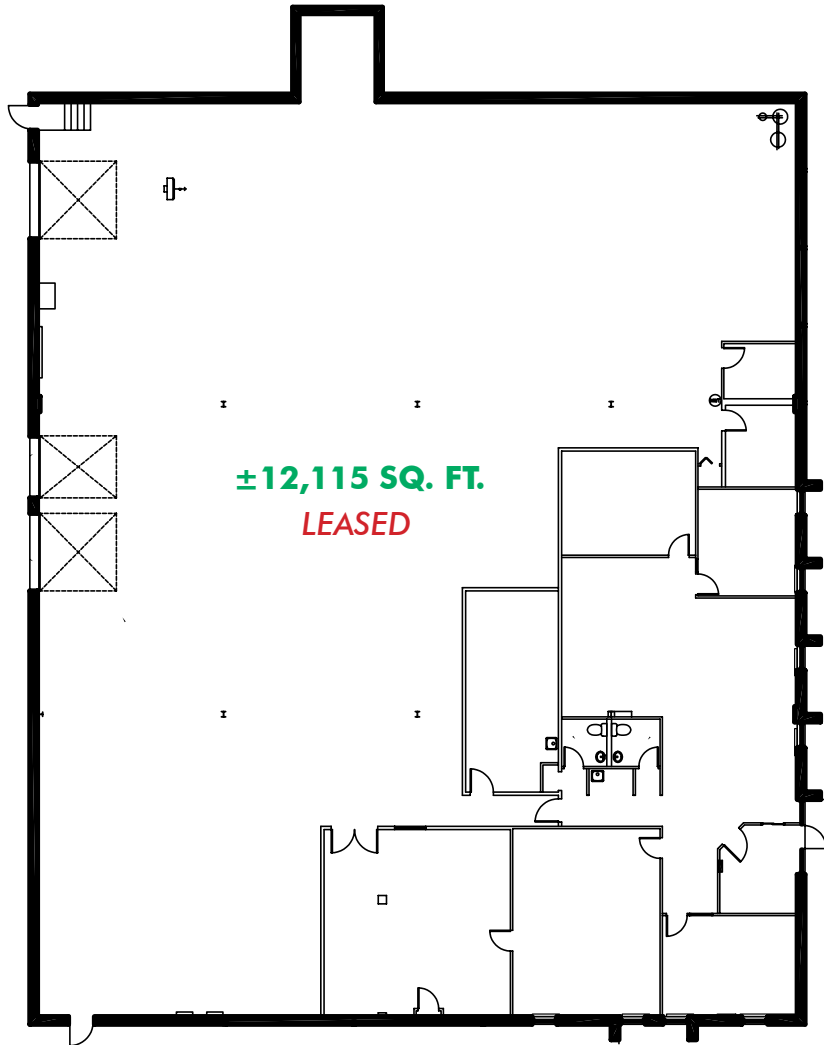
EVAN S. WHITE*
Executive Vice President
416 798 6232
evan.white@cbre.com

*Sales Representative

CBRE



FLOOR PLAN
2710 SLOUGH STREET



±12,115 SQ. FT.
LEASED

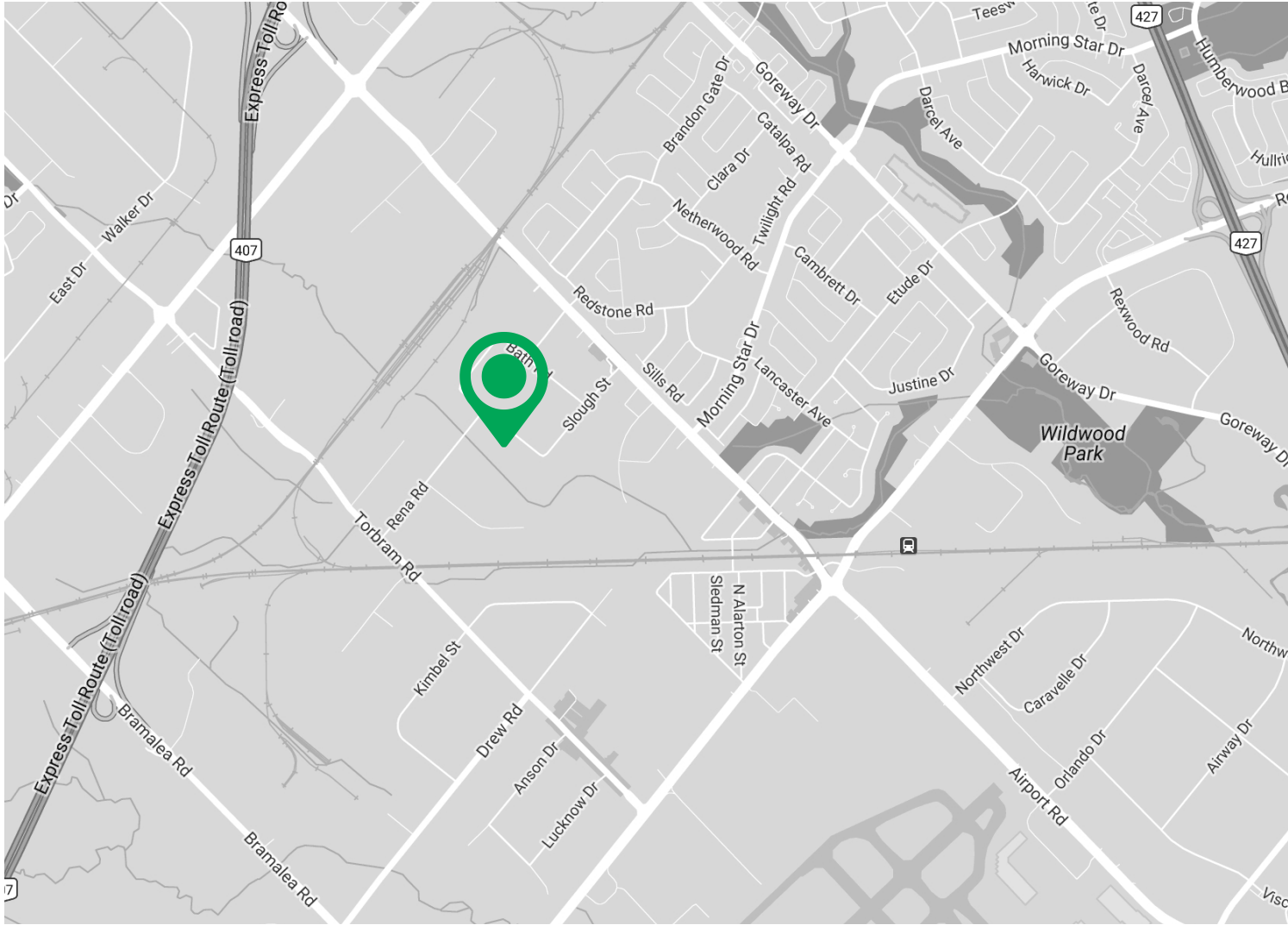


PHILLIP CHEUNG*
Senior Vice President
416 798 6243
phillip.cheung@cbre.com

EVAN S. WHITE*
Executive Vice President
416 798 6232
evan.white@cbre.com

*Sales Representative

CBRE



CBRE Limited, Real Estate Brokerage | 5935 Airport Road | Suite 700 | Mississauga, ON | L4V 1W5 | www.cbre.ca

This disclaimer shall apply to CBRE Limited, Real Estate Brokerage, and to all other divisions of the Corporation ("CBRE"). The information set out herein, including, without limitation, any projections, images, opinions, assumptions and estimates obtained from third parties (the "Information") has not been verified by CBRE, and CBRE does not represent, warrant or guarantee the accuracy, correctness and completeness of the Information. CBRE does not accept or assume any responsibility or liability, direct or consequential, for the Information or the recipient's reliance upon the Information. The recipient of the Information should take such steps as the recipient may deem necessary to verify the Information prior to placing any reliance upon the Information. The Information may change and any property described in the Information may be withdrawn from the market at any time without notice or obligation to the recipient from CBRE. CBRE and the CBRE logo are the service marks of CBRE Limited and/or its affiliated or related companies in other countries. All other marks displayed on this document are the property of their respective owners. All Rights Reserved. Mapping Sources: Canadian Mapping Services canadamapping@cbre.com; DMTI Spatial, Environics Analytics, Microsoft Bing, Google Earth

PHILLIP CHEUNG*
Senior Vice President
416 798 6243
phillip.cheung@cbre.com

EVAN S. WHITE*
Executive Vice President
416 798 6232
evan.white@cbre.com

*Sales Representative