

609 KUMPF DR

3,385 — 13,483 SF
Available for Lease

Tour, Toast, and Be Merry!
2025

EXTENDED FOR CHINESE NEW YEAR

Compliments of:
Colonia Treuhand



Jessica Tasker
Vice President of Leasing*
416-646-1749
*Broker

Colin Lam
Sales Representative
416-640-5734

Mary Jane Lawson
Broker of Record
416-628-5101

M. J. LAWSON
REAL ESTATE LTD.
BROKERAGE

THE STATEMENTS AND INFORMATION CONTAINED HEREIN ARE BASED UPON THE INFORMATION FURNISHED BY THE PRINCIPALS AND SOURCES WHICH WE DEEM RELIABLE FOR WHICH WE CAN ASSUME NO RESPONSIBILITY, BUT WHICH WE BELIEVE TO BE CORRECT. THIS SUBMISSION IS MADE SUBJECT TO PRIOR CONSUMMATION, CHANGE IN PRICE OR TERM, ERRORS, OMISSIONS, OR WITHDRAWAL FROM THE MARKET WITHOUT NOTICE.

1-888-668-9901
www.mjlawson.com

PROPERTY OVERVIEW

AREA: Suite 102: 10,972 SF
~~Suite 106:~~ **Leased**
Suite 202: 13,483 SF**
Suite 203: 3,385 SF
****Available Jun 1/26**

NET RENT: \$14.50 PSF

ADDITIONAL RENT: \$14.38 PSF
(2025/2026 ESTIMATE)

COMMISSION: \$1.80 psf per year
leased up to 5 years

HIGHLIGHTS

- High tech office space in campus setting
- Outdoor patios plus The Link amenity centre with lounge, Boardroom, Art Gallery and programming for tenants of the Park!
- 7-storey parking structure with elevator directly connected to office building



M. J. LAWSON
REAL ESTATE LTD.
BROKERAGE
1-888-668-9901

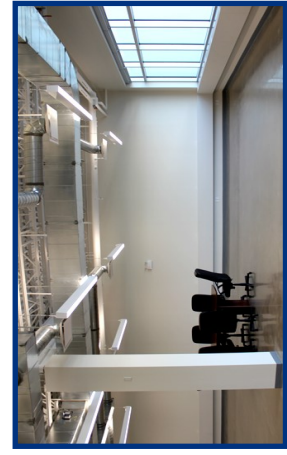
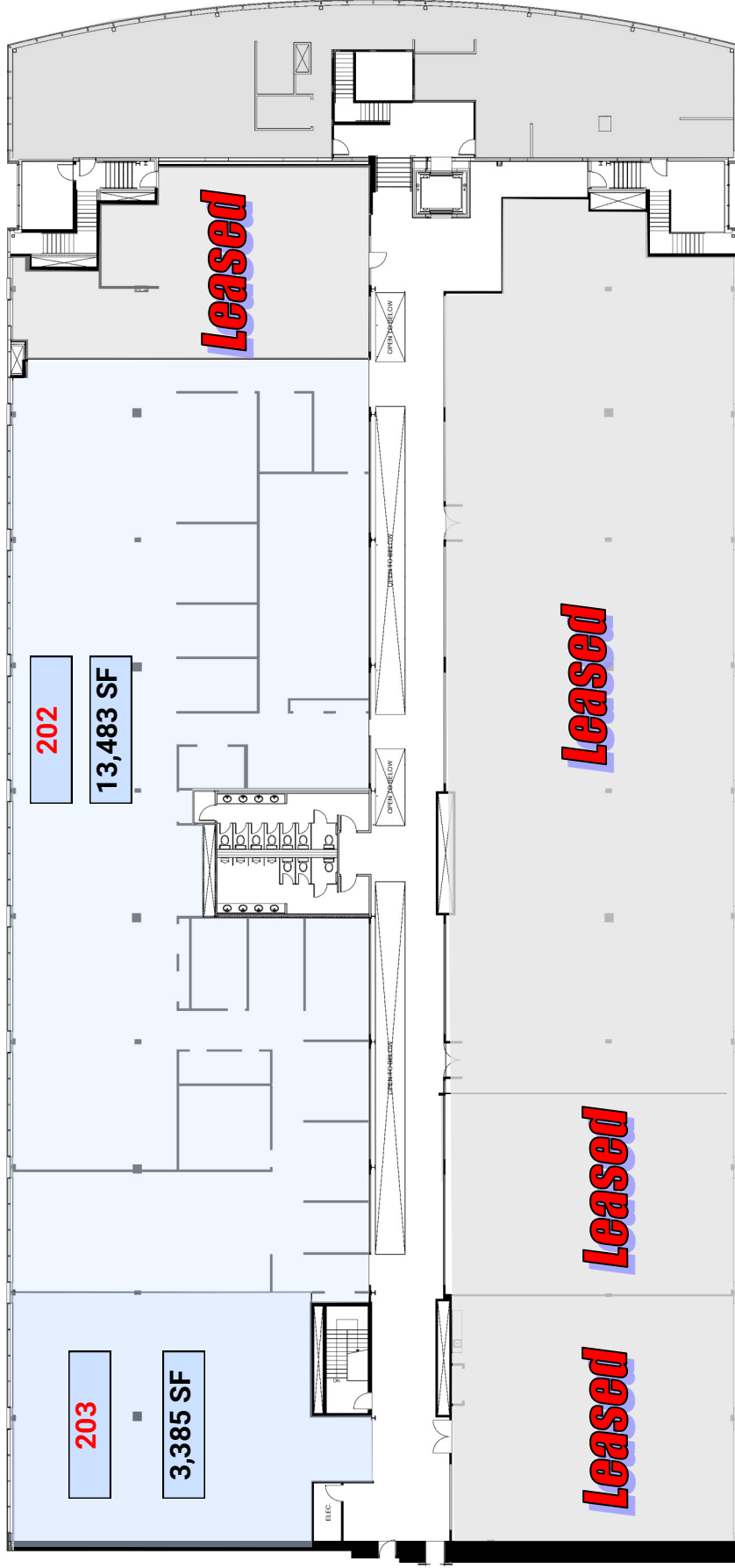
1st Floor Plan - 609 Kumpf Drive



Available Space
Suite 102—10,972 SF
Suite 106 — **Leased**

M. J. LAWSON
REAL ESTATE LTD.
BROKERAGE

2nd Floor Plan - 609 Kumpf Drive



Available Space
Suite 202 - 13,483 SF**
Suite 203 - 3,385 SF
****Available Jun 1/26**

M. J. LAWSON
REAL ESTATE LTD.
BROKERAGE

STATEMENTS AND INFORMATION CONTAINED HEREIN ARE BASED UPON THE INFORMATION FURNISHED BY THE PRINCIPALS AND SOURCES WHICH WE DEEM RELIABLE FOR WHICH WE CAN ASSUME NO RESPONSIBILITY, BUT WHICH WE BELIEVE TO BE CORRECT. THIS SUBMISSION IS MADE SUBJECT TO PRIOR CONSUMMATION, CHANGE IN PRICE OR TERM, ERRORS, OMISSIONS, OR WITHDRAWAL FROM THE MARKET WITHOUT NOTICE.