

Wildwood Center

Office/Medical Space

**10401 Old Georgetown Road
Bethesda, Maryland 20814**



Wildwood Center is ideally located to serve Suburban Maryland, Northern Virginia and Washington DC Tenants and their visitors. The building features a wide mix of medical tenants plus a bank, shopping, restaurants, and a new senior living facility next door.



Building Specifications: **Medical - 45,700 SF** **4 Floors**

Suite	Size / Use
100	472 RSF Medical/Office
101	564 RSF Medical/Office
104/106	2,449 RSF Medical
202	812 RSF Medical
401	1,882 RSF Dental

- **5 to 7-year lease term**
- **FREE surface parking**
- **Built-out and shell condition medical suites available**

For more information or to arrange a tour, please contact:

Bill Montrose

wmontrose@amrcommercial.com

301.961.9696
Ext. 203

Although all information furnished is from sources we deem reliable, such information has not been verified and no express representation is made, nor is any to be implied, as to the accuracy thereof, and it is submitted subject to errors, omissions, changes of price/rental or other conditions prior to sale or lease, and subject to withdrawal without notice.



ALEXANDER, MONTROSE, RITTENBERG
Commercial Real Estate Brokerage
Est. 1994

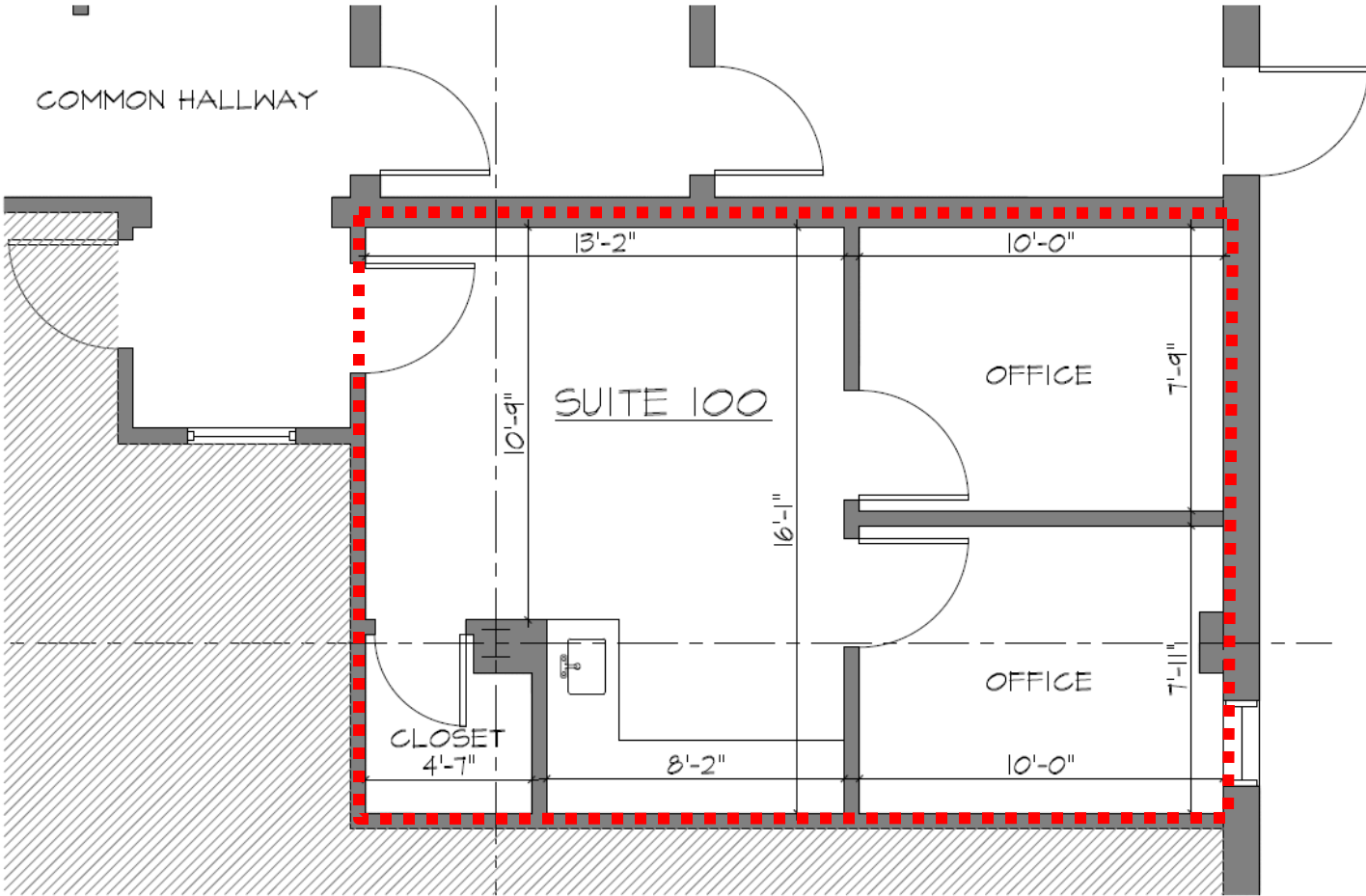
Celebrating
32 Years
1994-2026



Wildwood Center

10401 Old Georgetown Road
Bethesda, Maryland 20814

Suite 100
472 R.S.F.



NOT TO SCALE | MEASUREMENTS APPROXIMATE

Although all information furnished is from sources we deem reliable, such information has not been verified and no express representation is made, nor is any to be implied, as to the accuracy thereof, and it is submitted subject to errors, omissions, changes of price/rental or other conditions prior to sale or lease, and subject to withdrawal without notice.



ALEXANDER, MONTROSE, RITTENBERG
Commercial Real Estate Brokerage
Est. 1994

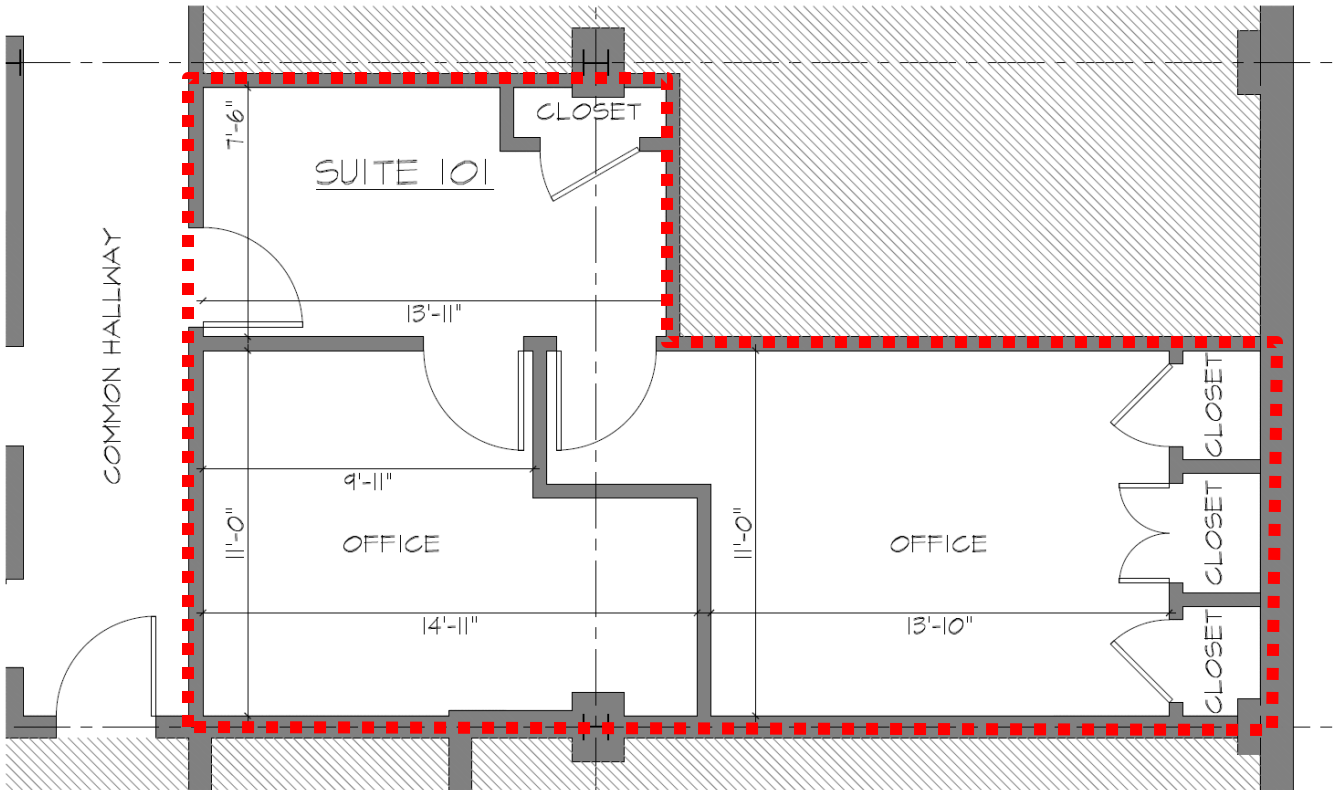
Celebrating
32 Years
1994-2026



Wildwood Center

10401 Old Georgetown Road
Bethesda, Maryland 20814

Suite 101
564 R.S.F.



NOT TO SCALE | MEASUREMENTS APPROXIMATE

Although all information furnished is from sources we deem reliable, such information has not been verified and no express representation is made, nor is any to be implied, as to the accuracy thereof, and it is submitted subject to errors, omissions, changes of price/rental or other conditions prior to sale or lease, and subject to withdrawal without notice.



ALEXANDER, MONTROSE, RITTENBERG
Commercial Real Estate Brokerage
Est. 1994

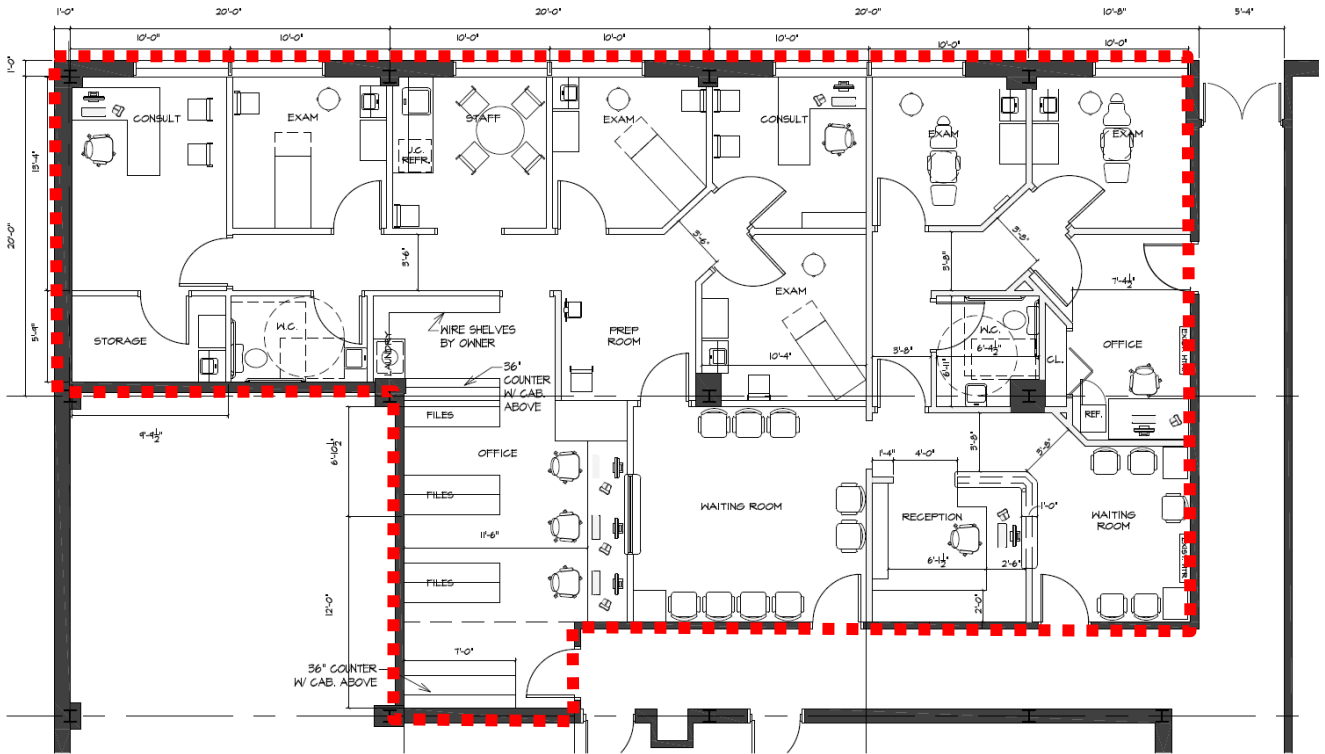
Celebrating
32
Years
1994-2026



Wildwood Center

10401 Old Georgetown Road
Bethesda, Maryland 20814

Suite 104/106
2,449 R.S.F.



NOT TO SCALE | MEASUREMENTS APPROXIMATE

Although all information furnished is from sources we deem reliable, such information has not been verified and no express representation is made, nor is any to be implied, as to the accuracy thereof, and it is submitted subject to errors, omissions, changes of price/rental or other conditions prior to sale or lease, and subject to withdrawal without notice.



ALEXANDER, MONTROSE, RITTENBERG
Commercial Real Estate Brokerage
Est. 1994

Celebrating
32 Years
1994-2026



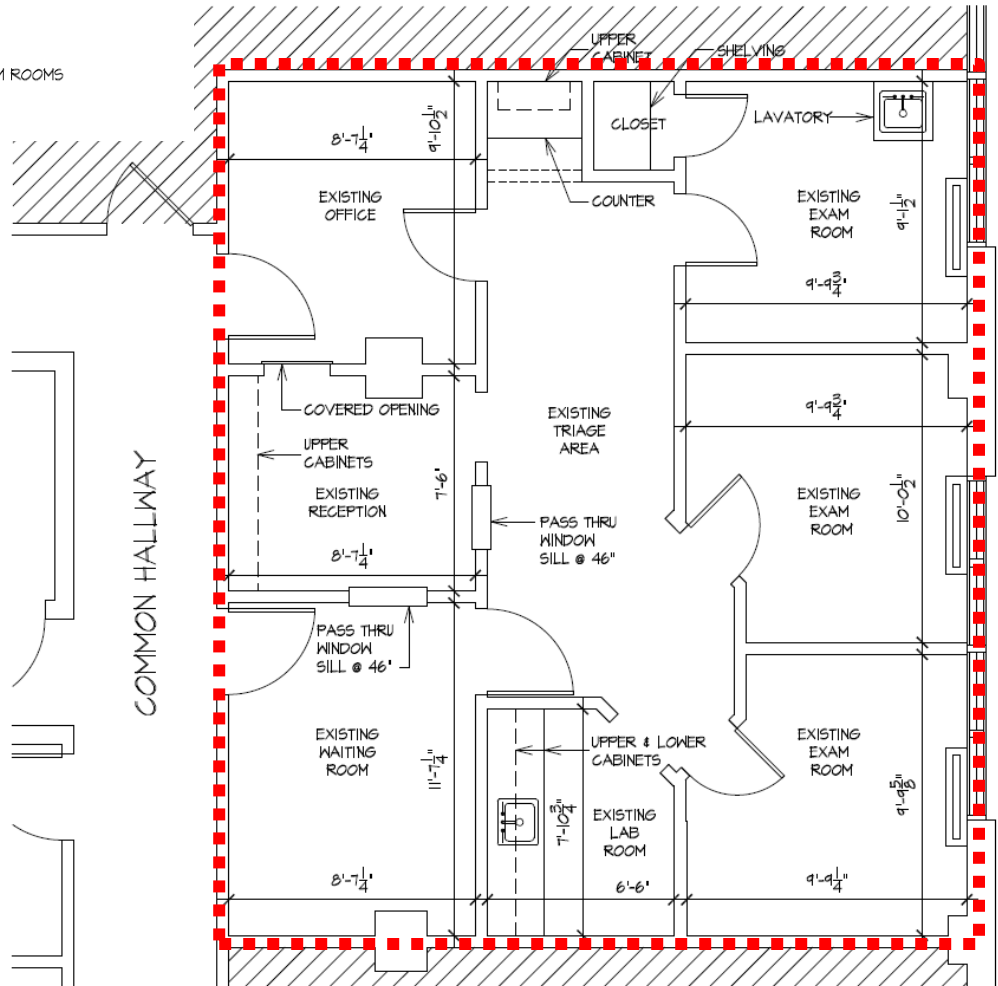
Wildwood Center

10401 Old Georgetown Road
Bethesda, Maryland 20814

Suite 202
812 R.S.F.

SUITE 202 AS-BUILT

- 812 RENTABLE SF
- EXISTING WAITING ROOM
- EXISTING RECEPTION
- EXISTING TRIAGE AREA
- EXISTING LAB
- (3) EXISTING EXAM ROOMS
- EXISTING OFFICE



NOT TO SCALE | MEASUREMENTS APPROXIMATE

Although all information furnished is from sources we deem reliable, such information has not been verified and no express representation is made, nor is any to be implied, as to the accuracy thereof, and it is submitted subject to errors, omissions, changes of price/rental or other conditions prior to sale or lease, and subject to withdrawal without notice.



ALEXANDER, MONTROSE, RITTENBERG
Commercial Real Estate Brokerage
Est. 1994

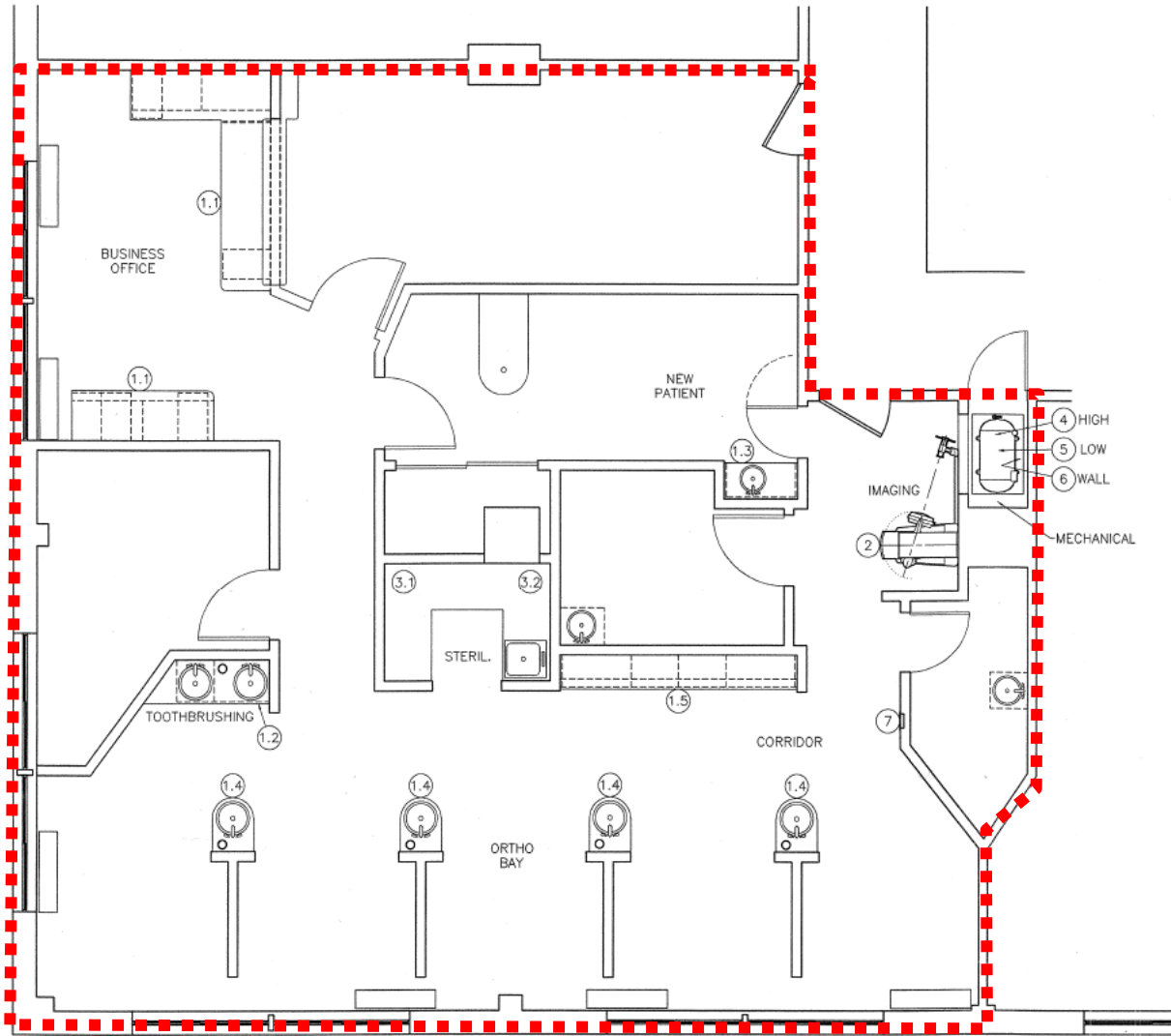
Celebrating
32 Years
1994-2026



Wildwood Center

10401 Old Georgetown Road
Bethesda, Maryland 20814

Suite 401
1,882 R.S.F.



NOT TO SCALE | MEASUREMENTS APPROXIMATE

Although all information furnished is from sources we deem reliable, such information has not been verified and no express representation is made, nor is any to be implied, as to the accuracy thereof, and it is submitted subject to errors, omissions, changes of price/rental or other conditions prior to sale or lease, and subject to withdrawal without notice.



ALEXANDER, MONTROSE, RITTENBERG
Commercial Real Estate Brokerage
Est. 1994

Celebrating
32 Years
1994-2026

