



FOR LEASE



777 N KILLINGSWORTH CT

Fully Renovated, Move-in Ready Facility

± 9,415 SF (± 1,800 SF Office) | \$1.35 psf/mo (NNN)

777 N Killingsworth Ct, Portland, OR

A rare opportunity to lease a fully renovated, move-in ready space in the heart of North Portland. This freestanding building offers a flexible open warehouse and updated office space. The site's prominent location, modern building features, and convenient access to major corridors make it perfect for businesses that demand both functionality and presence. Don't miss the chance to plant a flag in one of Portland's most connected neighborhoods. Construction is scheduled to be completed May 2026.

STEPHEN OSSEY

Senior Associate Broker | Licensed in OR

503-542-4027 | stephen@capacitycommercial.com

JACK FENTY

Associate Broker | Licensed in OR & WA

503-320-4897 | jfenty@capacitycommercial.com

NICK MCCOY

Associate Broker | Licensed in OR

971-330-2747 | nickmccoy@capacitycommercial.com

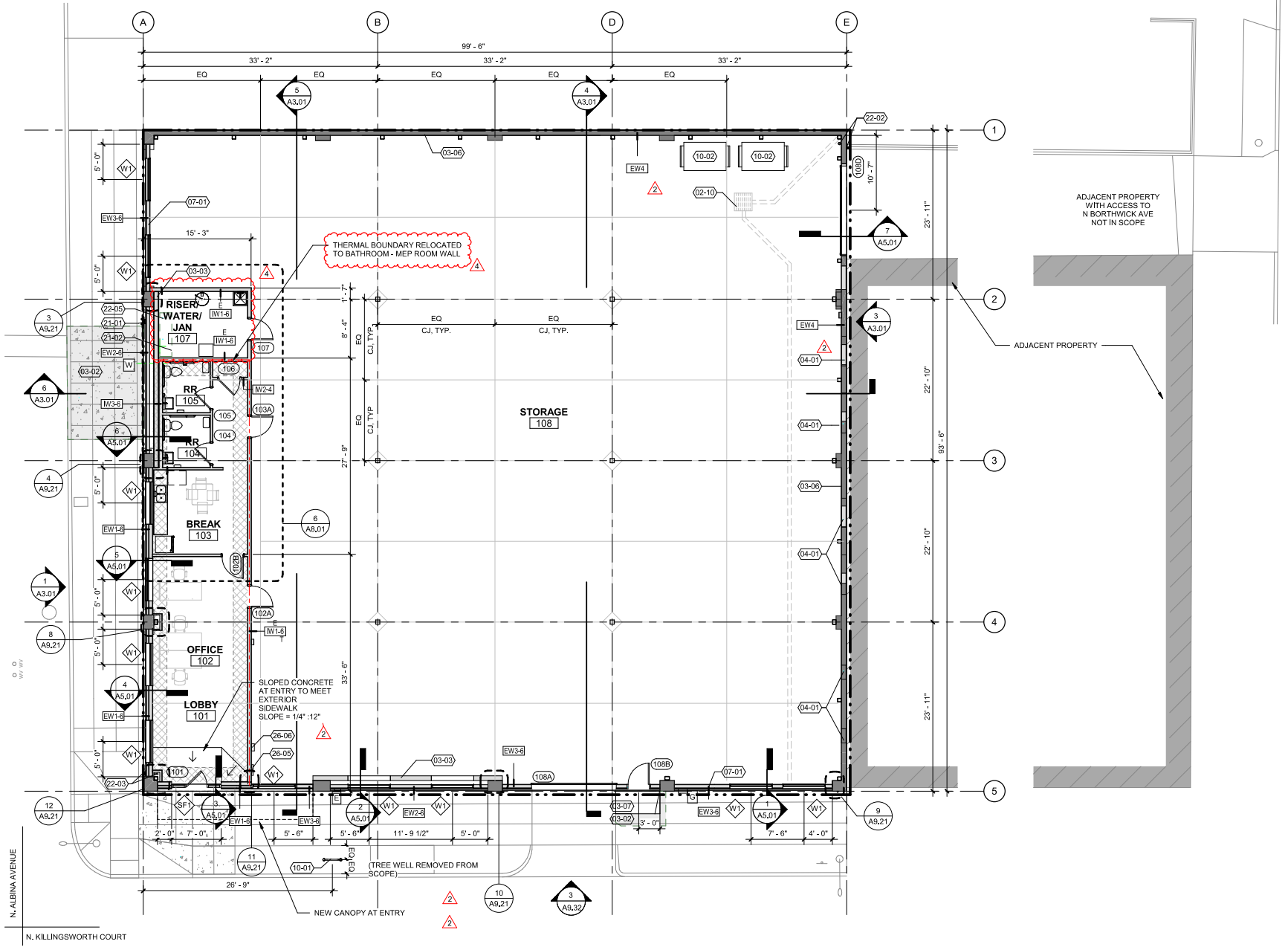
DON OSSEY, SIOR

Principal | Licensed in OR

503-542-4344 | don@capacitycommercial.com



FLOOR PLAN



1 FLOOR & SITE PLAN NEW ASSIGNED ADDRESS: 777 N KILLINGSWORTH CT
1/8" = 1'-0"



LOCAL AERIAL MAP



DRIVE TIMES		
Location	Distance from Property	
Vancouver, WA	5.8 miles	≈ 14 min
Portland International Airport	7.6 miles	≈ 19 min
Portland, OR (CBD)	4.7 miles	≈ 16 min

*Average Daily Traffic Volume | Traffic Counts are Provided by REGIS Online at SitesUSA.com ©2025 | Map data ©2025 Google Imagery ©2025, Airbus, CNES / Airbus, Maxar Technologies, Metro, Portland Oregon, Public Laboratory, State of Oregon, U.S. Geological Survey, USDA/FPAC/Geo

 <p>STEPHEN OSSEY Senior Associate Broker OR 503-542-4027 stephen@capacitycommercial.com</p>	<p>JACK FENTY Associate Broker OR & WA 503-320-4897 jfenty@capacitycommercial.com</p>	<p>NICK MCCOY Associate Broker OR 971-330-2747 nickmccoy@capacitycommercial.com</p>	<p>DON OSSEY, SIOR Principal OR 503-542-4344 don@capacitycommercial.com</p>
--	--	--	--