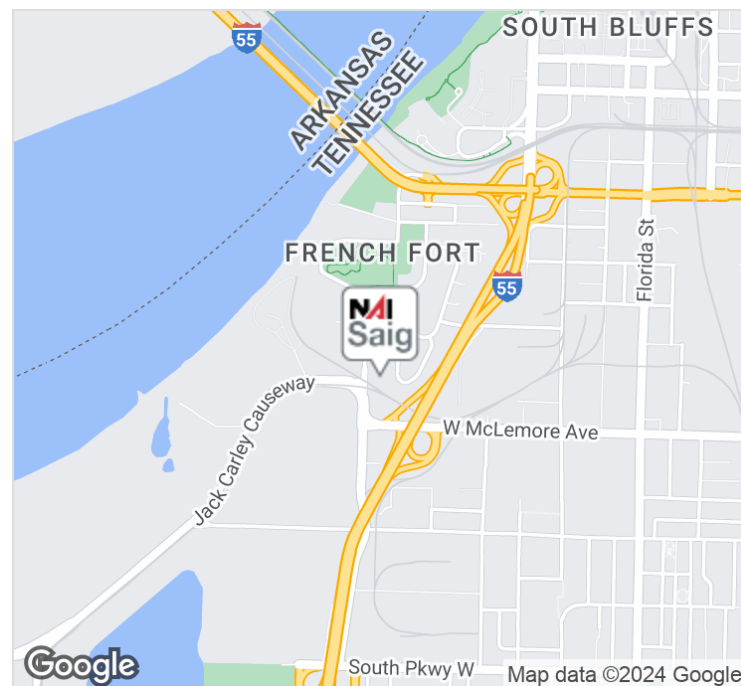




351 Wisconsin Ave & 1010 Riverside Blvd
Memphis, Tennessee 38106

Property Features

- Sale Price: \$995,000
- 6.6 acres total of Industrial Land and buildings
- 1 story brick building approx. 20,000 Feet
- 7,458 Foot Truck Service Garage
- 1 minute away from I-55/Riverside exit
- Zoning is EMP
- Current zoning will allow for a wide variety of heavy industrial uses
- No residential use allowed due to deed restriction



For more information:

Brian Califf, CCIM

901 526 3100 • bcaliff@saigcompany.com

NO WARRANTY OR REPRESENTATION, EXPRESS OR IMPLIED, IS MADE AS TO THE ACCURACY OF THE INFORMATION CONTAINED HEREIN, AND THE SAME IS SUBMITTED SUBJECT TO ERRORS, OMISSIONS, CHANGE OF PRICE, RENTAL OR OTHER CONDITIONS, PRIOR SALE, LEASE OR FINANCING, OR WITHDRAWAL WITHOUT NOTICE, AND OF ANY SPECIAL LISTING CONDITIONS IMPOSED BY OUR PRINCIPALS NO WARRANTIES OR REPRESENTATIONS ARE MADE AS TO THE CONDITION OF THE PROPERTY OR ANY HAZARDS CONTAINED THEREIN ARE ANY TO BE IMPLIED.

NAI Saig Company

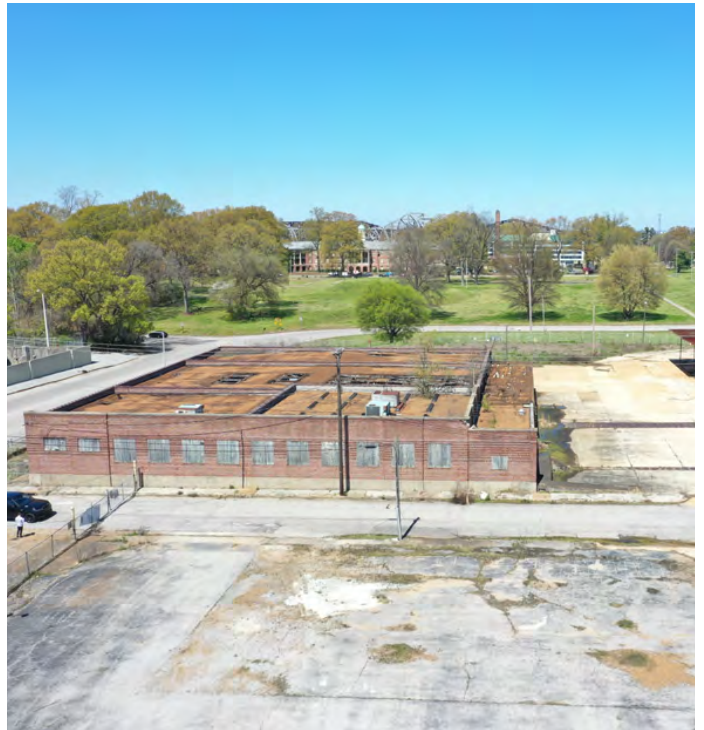
6263 Poplar Avenue Suite 150, Memphis, TN 38119

901 526 3100

saigcompany.com

For Sale

Industrial Land



For Sale

Industrial Land



