

FOR LEASE APPROX. 1,500 SF MEDICAL/OFFICE AVAILABLE IN BELL GARDENS

7218 GARFIELD AVE | BELL GARDENS, CA 90201



MATT SAKER

CA REAL ESTATE LIC #02017606

310.575.1517 x 237

MSAKER@CBM1.COM

1517 S. SEPULVEDA BLVD. | LOS ANGELES, CA
90025

CBM

CENTERS

BUSINESS

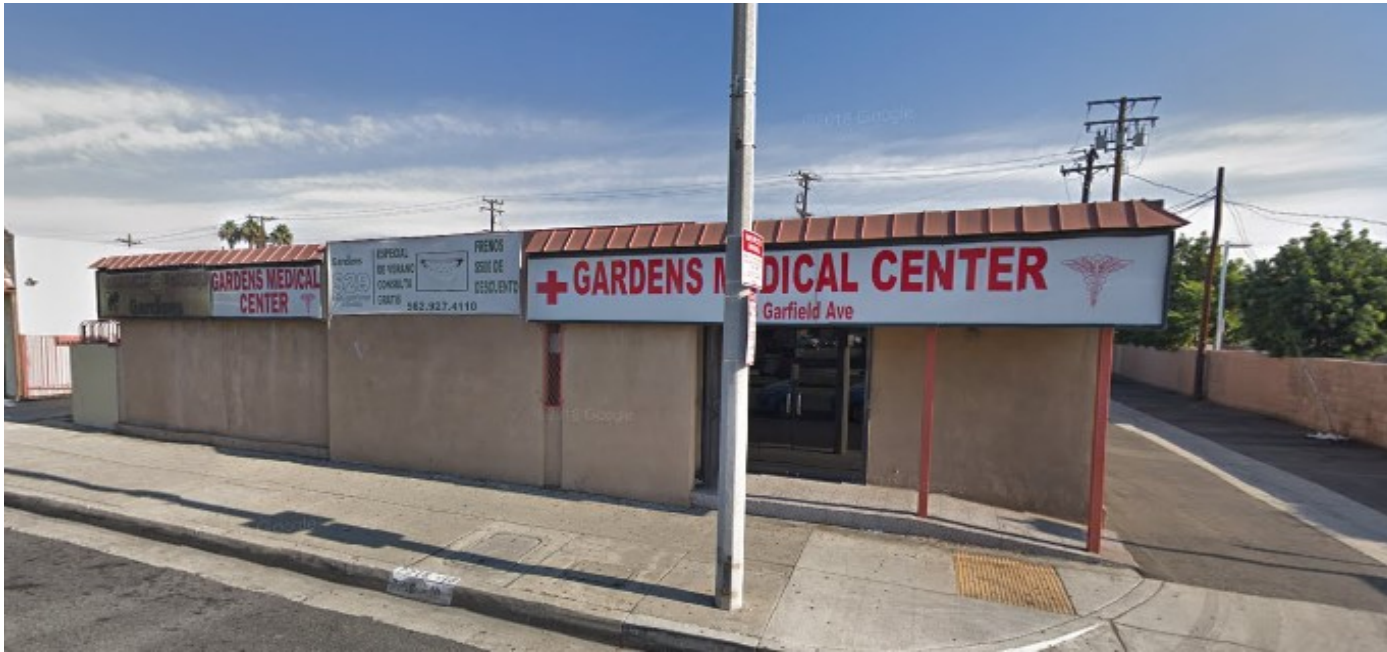
MANAGEMENT



CENTERS
BUSINESS
MANAGEMENT

APPROX. 1,500 SF MEDICAL/OFFICE SPACE AVAILABLE IN BELL GARDENS

FEATURES + AMENITIES



- APPROX. 1,500 SF MEDICAL/OFFICE SPACE AVAILABLE FOR LEASE.
- INCLUDES 5 EXAM ROOMS.
- LOCATED AT THE BUSY SIGNALIZED INTERSECTION OF GARFIELD AVENUE AND FLORENCE PLACE.
- MONUMENT SIGNAGE OPPORTUNITY.
- LOCATED IN HIGH DENSITY NEIGHBORHOOD.
- PRIVATE PARKING LOT IN THE BACK.
- EASY ACCESS TO 710 AND 5 FREEWAYS.



EXCLUSIVELY REPRESENTED BY

MATT SAKER

CA REAL ESTATE LIC #2017606

310.575.1517 x 237

MSAKER@CBM1.COM

NEIGHBORING RETAILERS



DEMOGRAPHICS SNAPSHOT	1-MILE	3-MILE	5-MILE
POPULATION	40,209	262,411	829,570
AVG HH INCOME	\$55,127	\$64,636	\$62,765

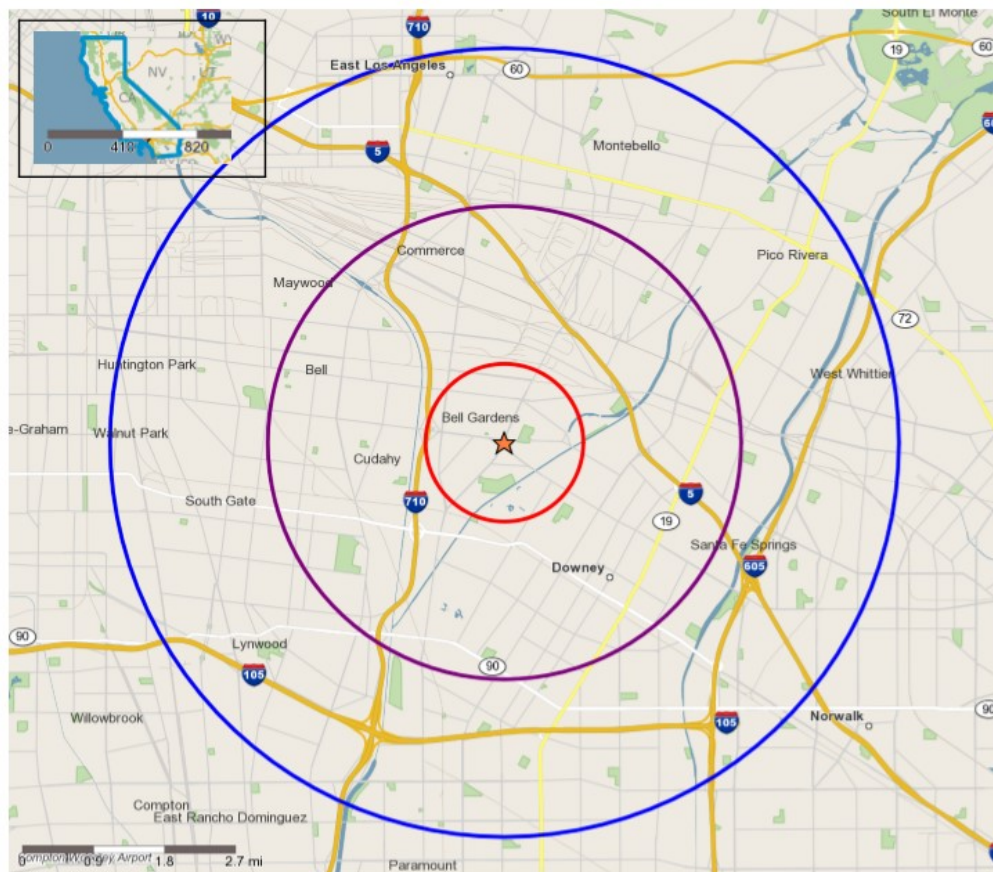
1517 S. SEPULVEDA BLVD. | LOS ANGELES, CA

CBM makes no warranties or guarantees as to the accuracy of the information provided herein, it has been obtained from sources considered credible, however, it has not been verified. The information contained herein is subject to errors and omissions and is subject to change without notice. Any and all projections, opinions, assumptions, and/or estimates provided are for the purposes of example and may not represent actual performance of this property. CBM is performing acts that require a real estate license. CA Real Estate Brokers Lic # 00982859

DEMOGRAPHICS

7218 GARFIELD AVE | BELL GARDENS, CA 90201

	1 mile(s)	3 mile(s)	5 mile(s)
Population: 2017B			
Total Population	40,209	262,411	829,570
Female Population	49.99%	50.71%	50.71%
Male Population	50.01%	49.29%	49.29%
Population Density	12,797	9,280	10,561
Population Median Age	29.4	31.7	31.6
Employed Civilian Population 16+	15,830	110,460	346,135
% White Collar	34.4%	44.1%	44.5%
% Blue Collar	65.6%	55.9%	55.5%
Total Q4 2017 Employees	9,776	111,252	275,759
Total Q4 2017 Establishments*	739	8,170	21,630
Population Growth 2000-2010	-3.66%	-0.11%	-0.39%
Population Growth 2017B-2022	-0.58%	-0.80%	-1.14%
Income: 2017B			
Average Household Income	\$55,127	\$64,636	\$62,765
Median Household Income	\$42,466	\$48,370	\$47,346
Per Capita Income	\$13,471	\$17,479	\$16,507
Avg Income Growth 2000-2010	30.48%	31.31%	32.79%
Avg Income Growth 2017B-2022	13.74%	13.46%	13.74%
Households: 2017B			
Households	9,719	70,338	216,049
Average Household Size	4.12	3.70	3.79
Hhld Growth 2000-2010	2.19%	0.77%	0.58%
Hhld Growth 2017B-2022	0.51%	1.03%	0.85%
Housing Units: 2017B			
Occupied Units	9,719	70,338	216,049
% Occupied Units	98.56%	98.34%	98.31%
% Vacant Housing Units	1.44%	1.66%	1.69%
Owner Occ Housing Growth 2000-2010	1.93%	-1.28%	-0.88%
Owner Occ Housing Growth 2000-2022	-3.09%	-1.53%	-1.98%
Owner Occ Housing Growth 2017B-2022	-0.75%	0.36%	0.33%
Occ Housing Growth 2000-2010	2.19%	0.77%	0.58%
Occ Housing Growth 2010-2022	3.83%	4.54%	4.03%
Occ Housing Growth 2017B-2022	0.51%	1.03%	0.85%
Race and Ethnicity: 2017B			
% American Indian or Alaska Native Population	1.12%	0.90%	1.02%
% Asian Population	1.17%	3.02%	3.16%
% Black Population	1.12%	1.66%	2.85%
% Hawaiian or Pacific Islander Population	0.12%	0.11%	0.17%
% Multirace Population	3.24%	3.86%	3.86%
% Other Race Population	43.68%	37.02%	38.43%
% White Population	49.55%	53.44%	50.51%
% Hispanic Population	94.74%	88.54%	89.22%
% Non Hispanic Population	6.33%	12.39%	11.81%



Copyright 2006-2018 TomTom. All rights reserved. This material is proprietary and the subject of copyright protection, database right protection and other intellectual property rights owned by TomTom or its suppliers. The use of this material is subject to the terms of a license agreement. Any unauthorized copying or disclosure of this material will lead to criminal and civil liabilities.

- Trade Areas (in miles) - 1
- Trade Areas (in miles) - 3
- Trade Areas (in miles) - 5

MATT SAKER X 237 | MSAKER@CBM1.COM

1517 S. SEPULVEDA BLVD. | LOS ANGELES, CA

CBM makes no warranties or guarantees as to the accuracy of the information provided herein, it has been obtained from sources considered credible, however, it has not been verified. The information contained herein is subject to errors and omissions and is subject to change without notice. Any and all projections, opinions, assumptions, and/or estimates provided are for the purposes of example and may not represent actual performance of this property. CBM is performing acts that require a real estate license. CA Real Estate Brokers Lic # 00982659