



FOR LEASE

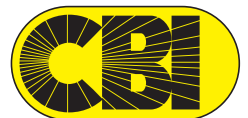
**RETAIL SPACES IN
MILILANI**

**95-026 Kamehameha Highway
Mililani, Hawaii 96789**

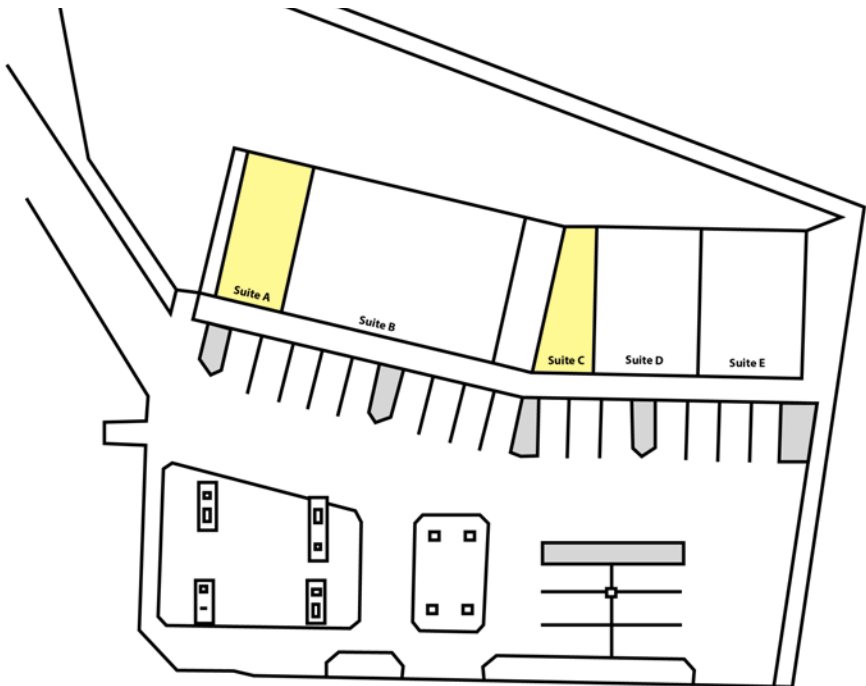


Daniel Jarrett III (S)
RS-63586
808-256-3506
dj@cbi-hawaii.com

NAI CBI Hawaii
1712 S. King Street Suite 201
Honolulu, HI 96826
808.942.7100 | www.cbi-hawaii.com



95-026 KAMEHAMEHA HWY



PROPERTY DESCRIPTION

Key Features:

- **Location:** Within the well-known Mililani FastStop convenience center
- **Shared site** with a high-volume gas station generating consistent customer throughout the day
- **Excellent street frontage** and visibility along Kamehameha Highway
- Ample on-site customer parking
- Convenient customer access from signalized intersection
- **Bus line** accessibility nearby
- **Established neighborhood** retail destination with strong repeat customers
- Suitable for retail, service, office, medical, wellness, or quick-service concepts (subject to landlord approval)
- **Flexible** floor plan capable of accommodating a variety of business uses

INVESTMENT SUMMARY

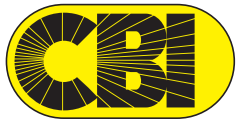
TMK:	1-9-5-8-48
Zoning:	B-2
Area:	Mililani
CAM:	\$1.40 per SF/mo.
Building Size:	6,255 SF
Space Size:	483 SF
Year Built:	1990
Parking:	Customer Parking Only
Spaces Available:	Unit C 483 SF
	Unit A 740 SF



NAI
CBI Hawaii

Daniel Jarrett III (S)
RS-63586
808-256-3506
dj@cbi-hawaii.com

NAI CBI Hawaii
1712 S. King Street Suite 201
Honolulu, HI 96826
808.942.7100 | www.cbi-hawaii.com





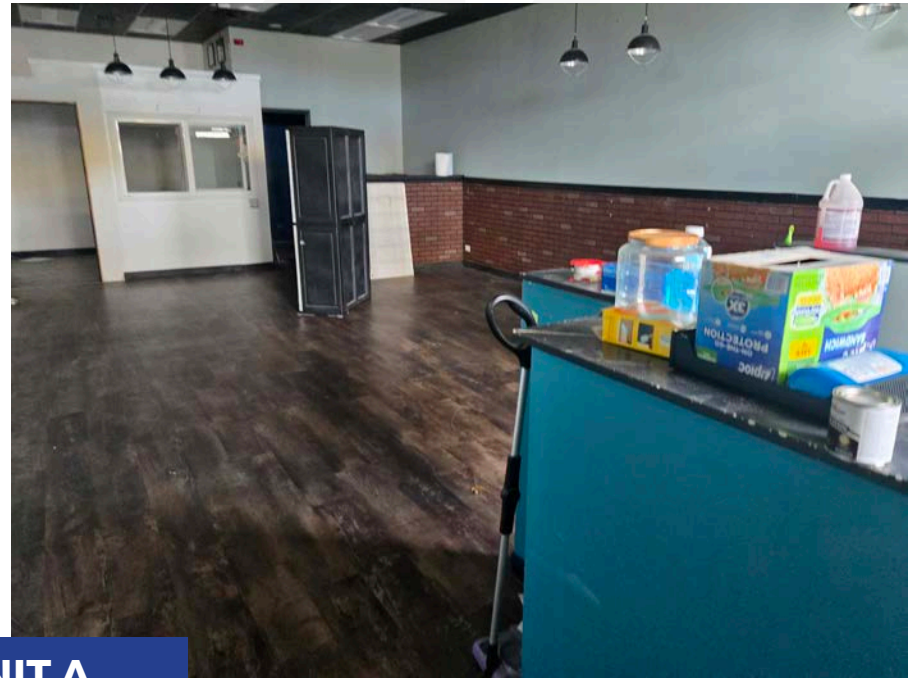
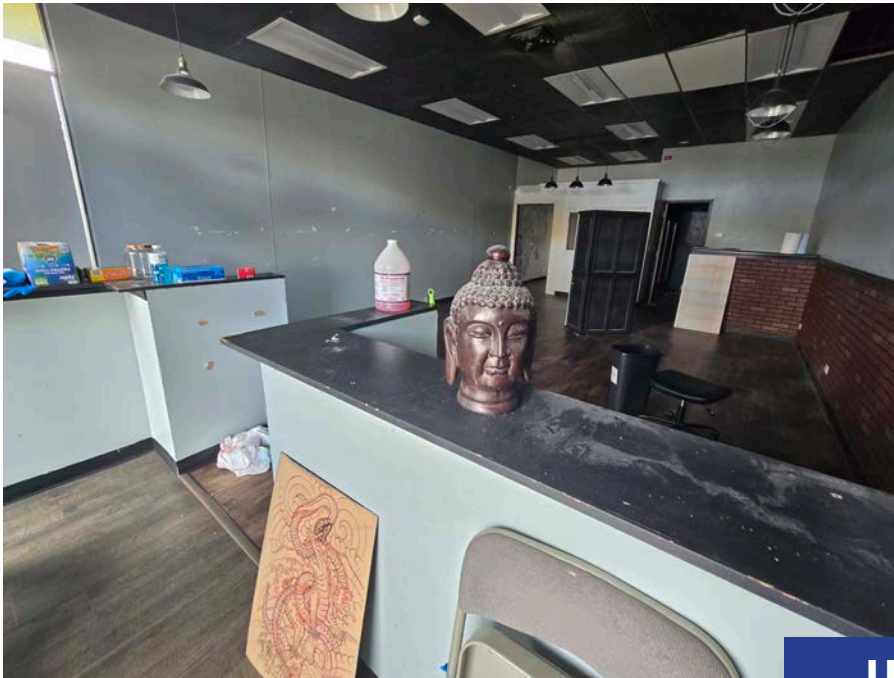
UNIT C



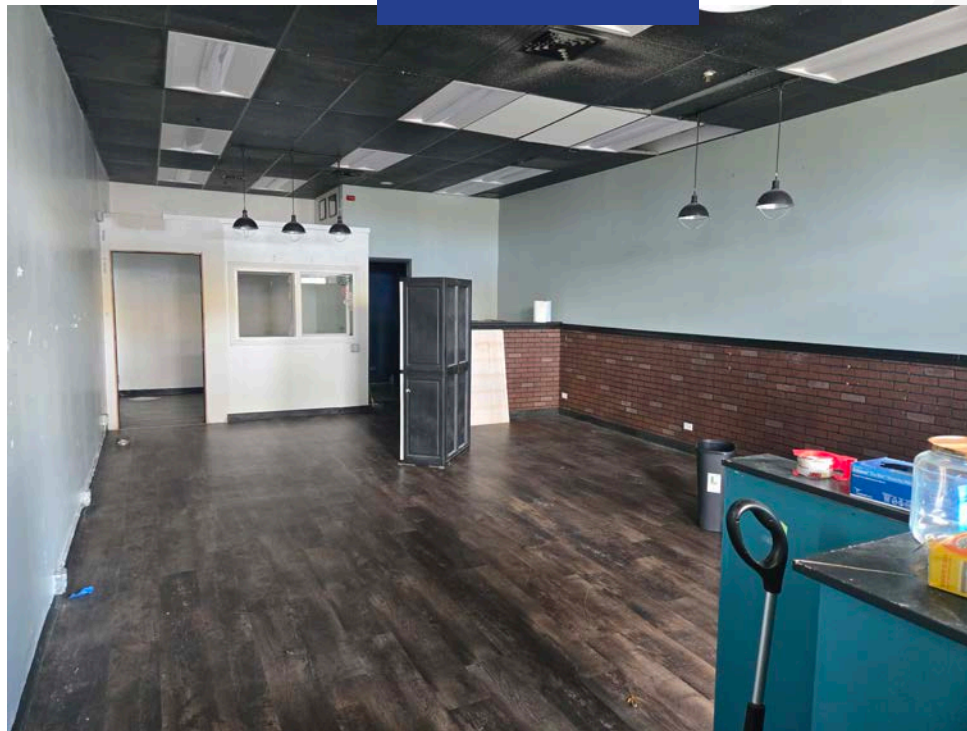
Daniel Jarrett III (S)
RS-63586
808-256-3506
dj@cbi-hawaii.com

NAI CBI Hawaii
1712 S. King Street Suite 201
Honolulu, HI 96826
808.942.7100 | www.cbi-hawaii.com





UNIT A



Daniel Jarrett III (S)
RS-63586
808-256-3506
dj@cbi-hawaii.com

NAI CBI Hawaii
1712 S. King Street Suite 201
Honolulu, HI 96826
808.942.7100 | www.cbi-hawaii.com





Daniel Jarrett III (S)
RS-63586
808-256-3506
dj@cbi-hawaii.com

NAI CBI Hawaii
1712 S. King Street Suite 201
Honolulu, HI 96826
808.942.7100 | www.cbi-hawaii.com

