

# Orlando Central Park

2100 Premier Row  
Orlando, FL 32809

±7,200 SF Total | Two Dock High Doors | One Ramp Door | Six Auto Parking Spaces



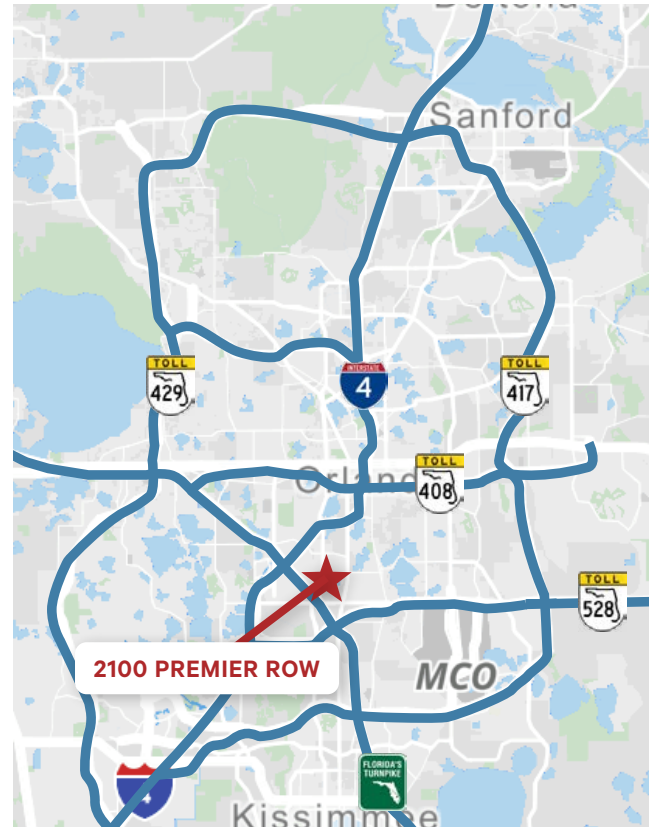
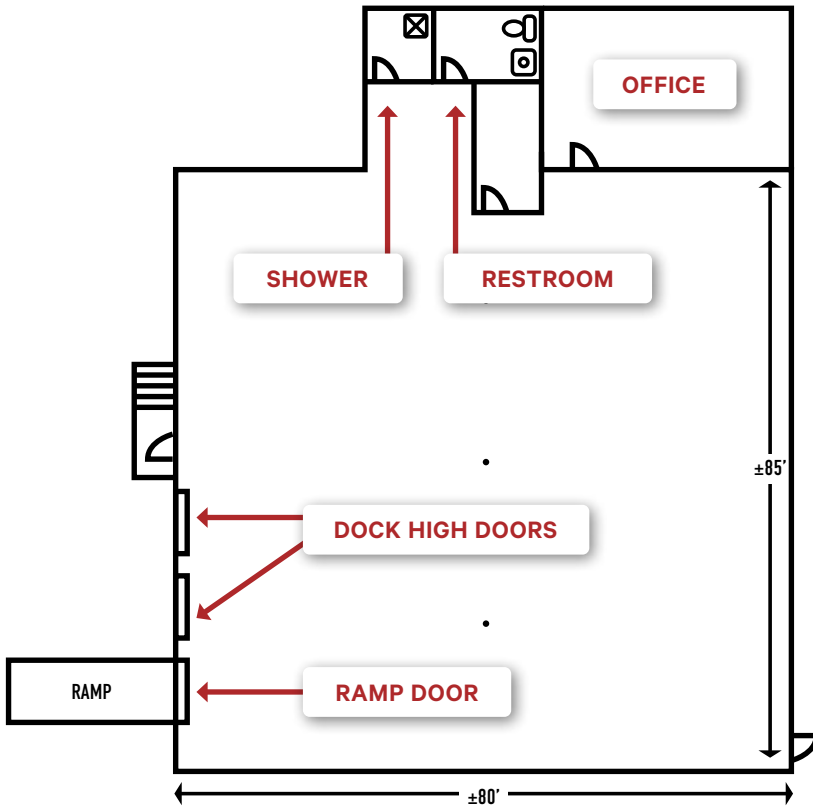
DOES NOT  
INCLUDE  
YARD/IOS



Asking: \$12,000/Month Modified Gross

SUITE FEATURES

- + ±7,200 SF Total
- + Two (2) Dock High Doors
- + One (1) Ramp Door
- + New LED Warehouse Lights
- + 300 SF Office
- + 10' x 10' Loading Doors
- + 16' Clear Height
- + 3-Phase Power



**Cameron Thomas**  
Senior Associate  
407 404 5078  
cameron.thomas@cbre.com

**Alex Eastwood**  
Senior Associate  
407 404 5074  
alex.eastwood@cbre.com

**Jose Rivera**  
Associate  
407 404 5067  
jose.rivera1@cbre.com

© 2026 CBRE, Inc. All rights reserved. This information has been obtained from sources believed reliable, but has not been verified for accuracy or completeness. You should conduct a careful, independent investigation of the property and verify all information. Any reliance on this information is solely at your own risk. CBRE and the CBRE logo are service marks of CBRE, Inc. All other marks displayed on this document are the property of their respective owners, and the use of such logos does not imply any affiliation with or endorsement of CBRE. Photos herein are the property of their respective owners. Use of these images without the express written consent of the owner is prohibited.