

CBRE



50 BROADWAY

Entire 26th Floor | 3,754 RSF | Sublease

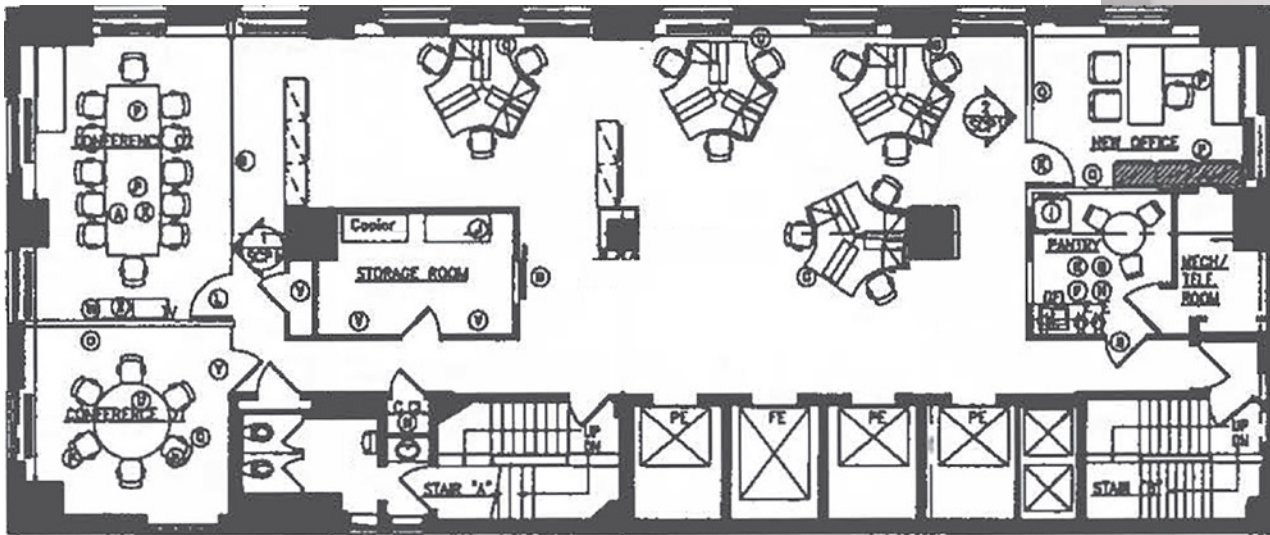
Possession: Immediate
Term: March 30, 2030

- Plug-and-play sublease
- Wired and furnished

- Tower floor with great light and views
- Immediate occupancy

CBRE, Inc., as exclusive sublease agent, is pleased to offer the following prime space for sublease:

PLUG & PLAY



BROADWAY





GREAT VIEWS



Gerry Miovski

+1 212 6187072

Gerry.Miovski@cbre.com

Masha Dudelzak

+1 212 618 7071

Masha.Dudelzak@cbre.com

CBRE

© 2026 CBRE, Inc. All rights reserved. This information has been obtained from sources believed reliable, but has not been verified for accuracy or completeness. You should conduct a careful, independent investigation of the property and verify all information. Any reliance on this information is solely at your own risk. CBRE and the CBRE logo are service marks of CBRE, Inc. All other marks displayed on this document are the property of their respective owners, and the use of such logos does not imply any affiliation with or endorsement of CBRE.