



# For Lease

**2410 Hemingway**  
Nampa, Idaho 83686

**Bryant Jones**  
+1 208 472 1663  
bryant.jones@colliers.com

**Mike Peña**  
+1 208 472 1666  
mike.pena@colliers.com

**Lincoln Hagood**  
+1 208 472 1667  
lincoln.hagood@colliers.com

Available | 2,184 SF

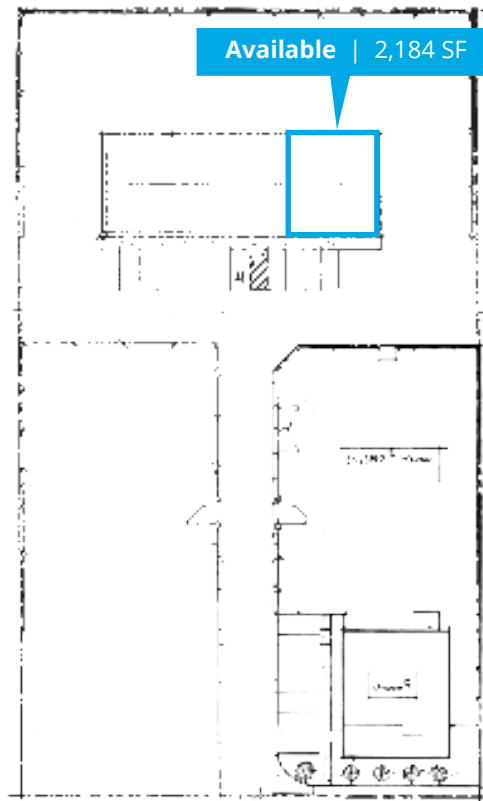


Close to freeway exit in Nampa  
and right off Caldwell Boulevard

## Property Information

Zoning	IL
Clear Height	15' 6"
Power	3 Phase
Grade Level Doors	3 - 12' x 12'

## Site Plan



## Space Available

Type	Size	Rate PSF	Monthly Rate
Warehouse/Office	2,184 SF	\$1.05 PSF	\$2,293 + NNN's
<i>NNN's</i>	<i>\$743 per month</i>		

## Highlights

- Close to freeway exit in Nampa and right off Caldwell Boulevard
- Includes ~600 SF Mezzanine



2410 Hemingway

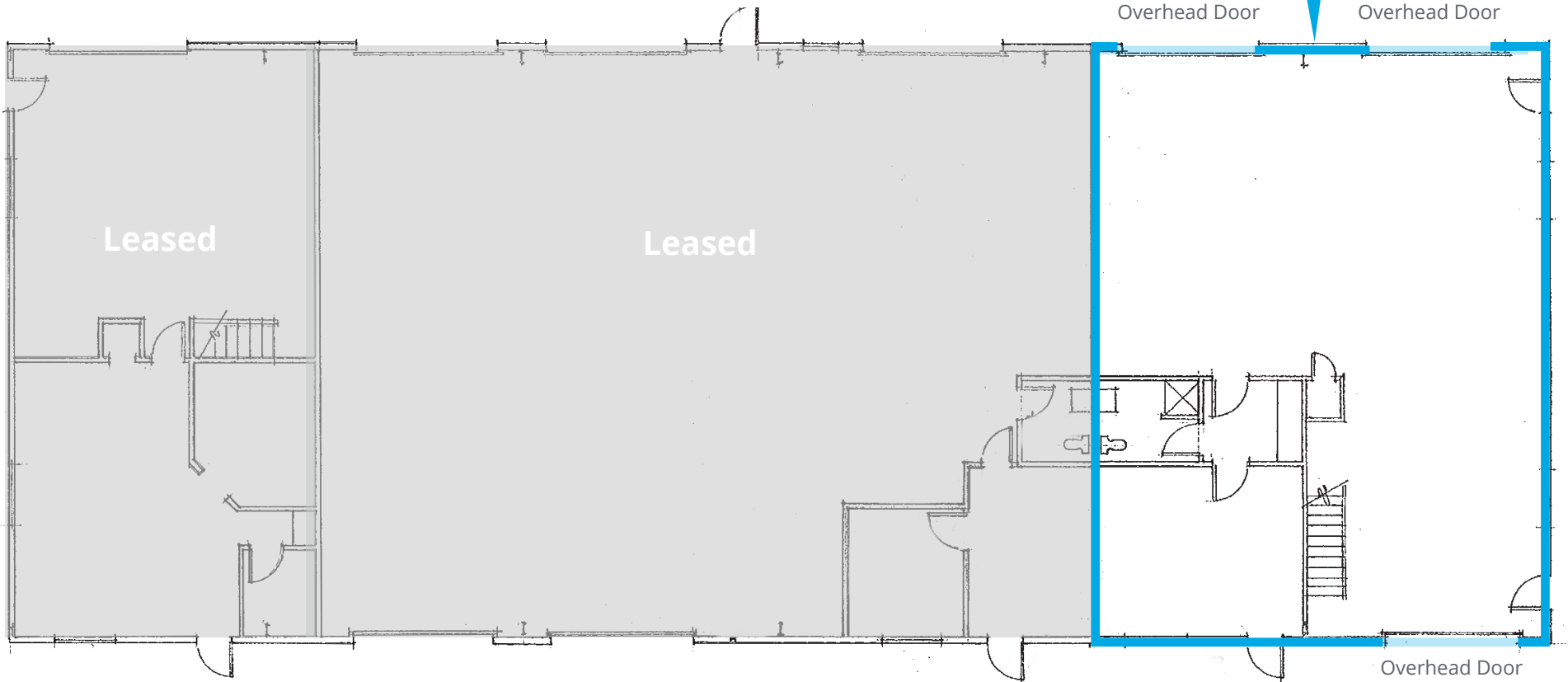
# Floor Plan



**Available** | 2,184 SF

Overhead Door

Overhead Door



Overhead Door

# Location

 [Google Map](#)

 [Street View](#)



**Colliers**

5700 E Franklin Road, Suite 205  
 Nampa, Idaho 83686  
 +1 208 472 1660  
[colliers.com/idaho](http://colliers.com/idaho)

This document has been prepared by Colliers for advertising and general information only. Colliers makes no guarantees, representations or warranties of any kind, expressed or implied, regarding the information including, but not limited to, warranties of content, accuracy and reliability. Any interested party should undertake their own inquiries as to the accuracy of the information. Colliers excludes unequivocally all inferred or implied terms, conditions and warranties arising out of this document and excludes all liability for loss and damages arising there from. This publication is the copyrighted property of Colliers and/or its licensor(s). © 2026. All rights reserved. This communication is not intended to cause or induce breach of an existing listing agreement. Colliers Treasure Valley, LLC.