

1,650 ± SF Repair Bay & Support Area FOR LEASE



100 LAFAYETTE AVE Laurel, MD 20707

PROPERTY HIGHLIGHTS

- 1,650 ± SF Repair Bay and Support Area
- Two (2) bay garages
- 18' clear ceiling height
- Customer waiting area
- Zoned I-G (Industrial General)
- Floor drainage system with underground separator
- Two (2) auto lifts
- Fully heated and air conditioned
- Drive-thru access lane
- Easy access to I-95 & Inter County Connector (ICC)
- **LEASE RATE: \$4,000 PER MONTH**

PROPERTY DESCRIPTION

1,650 ± SF Repair Bay & Support Area For Lease



EDWARD LUCKETT
O: 301.318.3100
eluckett@naimichael.com

TERRY ROGERS
O: 301.526.2584
trogers@naimichael.com

1,650 ± SF Repair Bay & Support Area For Lease
 100 LAFAYETTE AVE, LAUREL, MD 20707



DEMOGRAPHICS



POPULATION



HOUSEHOLDS



AVG. HOUSEHOLD INCOME

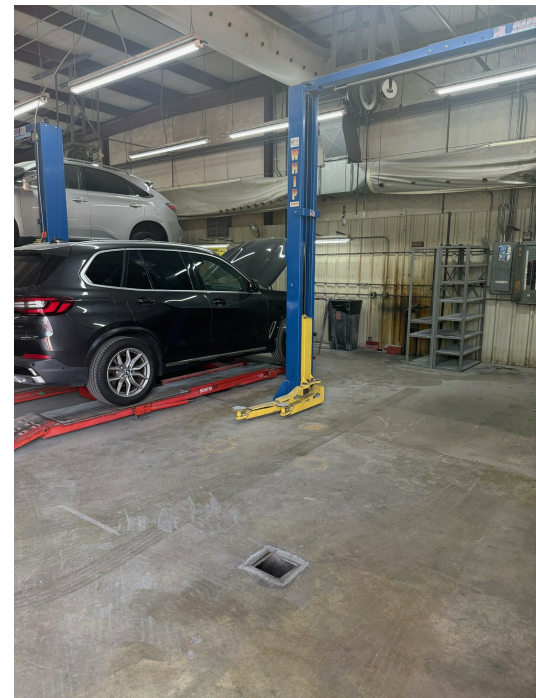
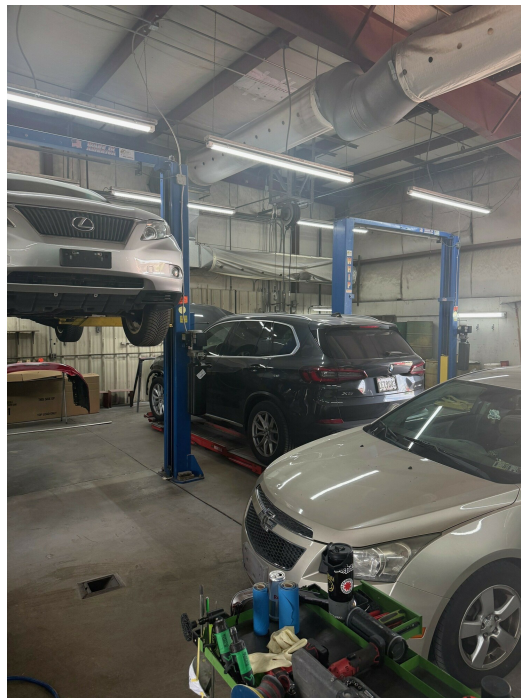
1 Mile	14,535	5,701	\$99,129
3 Miles	95,536	36,796	\$120,460
5 Miles	165,511	59,842	\$133,910

2023 American Community Survey (ACS)

LOCATION DESCRIPTION

Lafayette Ave is strategically located between Baltimore and Washington, DC, with quick access to numerous highways and amenities. The site is less than 3 miles from I-95, the Baltimore-Washington Parkway (MD 295), approx. 10-miles from the Capital Beltway (I-495) and approx. .19-miles from the Baltimore Beltway (I-695). Additionally, this property is adjacent to a MARC rail station and only 15-miles from the BWI Airport. the City of Laurel offers a wide variety of restaurants, retail centers, convenience stores, and business parks, all within the vicinity of the subject property.

1,650 ± SF Repair Bay & Support Area For Lease
100 LAFAYETTE AVE, LAUREL, MD 20707



The information contained herein has been given to us by the owner of the property or other sources we deem reliable. We have no reason to doubt its accuracy, but we do not guarantee it. Floor plans, site plans and other graphic representations of this property have been reduced and reproduced, and are not necessarily to scale. All information should be verified prior to purchase or lease.

EDWARD LUCKETT
301.318.3100 | eluckett@naimichael.com

TERRY ROGERS
301.526.2584 | trogers@naimichael.com