



DEVELOPED BY



12705 Commerce Station Dr  
Huntersville, NC 28078

Leasing By:

Tom Tropeano, SIOR

704 413 0228

[tom.tropeano@avisonyoung.com](mailto:tom.tropeano@avisonyoung.com)

Henry Lobb, SIOR

704 469 5964

[henry.lobb@avisonyoung.com](mailto:henry.lobb@avisonyoung.com)

**AVISON  
YOUNG**

## Site Plan

PARCEL ID:  
01930105

COUNTY:  
Mecklenburg

ACREAGE:  
±42.3 AC

ZONING:  
CB

BUILDING 1:  
±327,261 SF  
(Divisible)

BUILDING 2:  
±137,775 SF  
(Divisible)



## Property Features

### BUILDING ONE SPECIFICATIONS

Building SF:	±327,261 SF
Building Dimensions:	1,154' x 280'
Clear Height:	36'
Floors:	7" unreinforced
Exterior Walls:	Concrete tilt-up
Roof Type:	TPO white, 60 mil
Bay Size:	54' 0" x 55' 0" with 60' speedbay
Dock High Doors:	(68) doors
Knock Out Panels:	(2) 14' x 16' knock outs
Drive-In Doors:	(2) 14' x 16' doors
Auto Parking:	293 spaces
Trailer Parking:	24 spaces
Truck Court:	130' shared
Fire Protection:	ESFR sprinkler system
Power:	~3,000 amps
Lighting:	LED with motion sensors

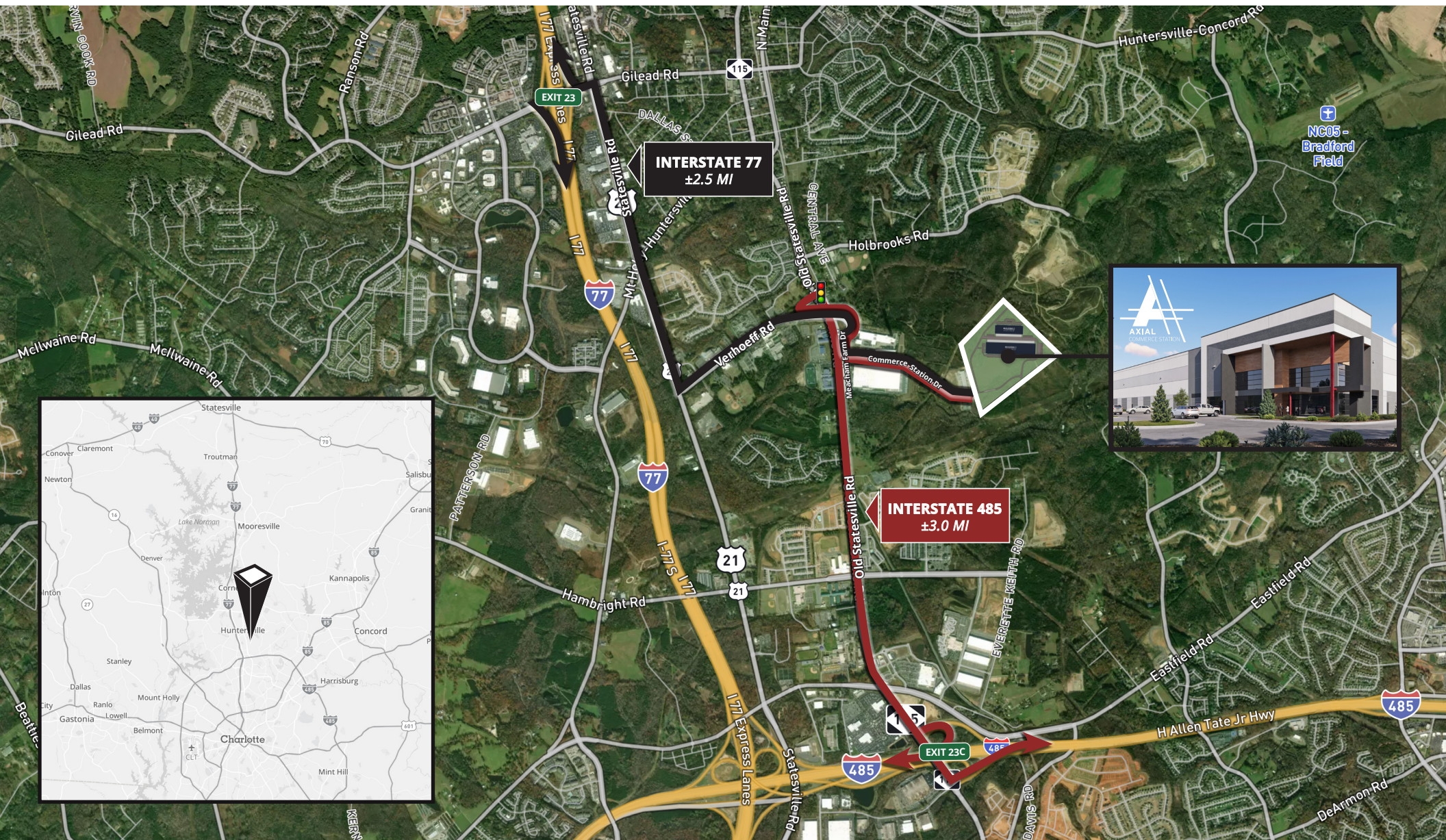
### BUILDING TWO SPECIFICATIONS

Building SF:	±137,775 SF
Building Dimensions:	650' x 210'
Clear Height:	32'
Floors:	6" unreinforced
Exterior Walls:	Concrete tilt-up
Roof Type:	TPO white, 60 mil
Bay Size:	54' 2" x 50' 0" with 60' speedbay
Dock High Doors:	(38) doors
Knock Out Panels:	(2) 14' x 16' knock outs
Drive-In Doors:	(2) 14' x 16' doors
Auto Parking:	146 spaces
Trailer Parking:	30 spaces
Truck Court:	130' shared
Fire Protection:	ESFR sprinkler system
Power:	~3,000 amps
Lighting:	LED with motion sensors

## Building Renderings



## Interstate Access



# AXIAL COMMERCE STATION



Uptown Charlotte ±13.1 miles

Charlotte Douglas Intl. Airport ±16.9 miles



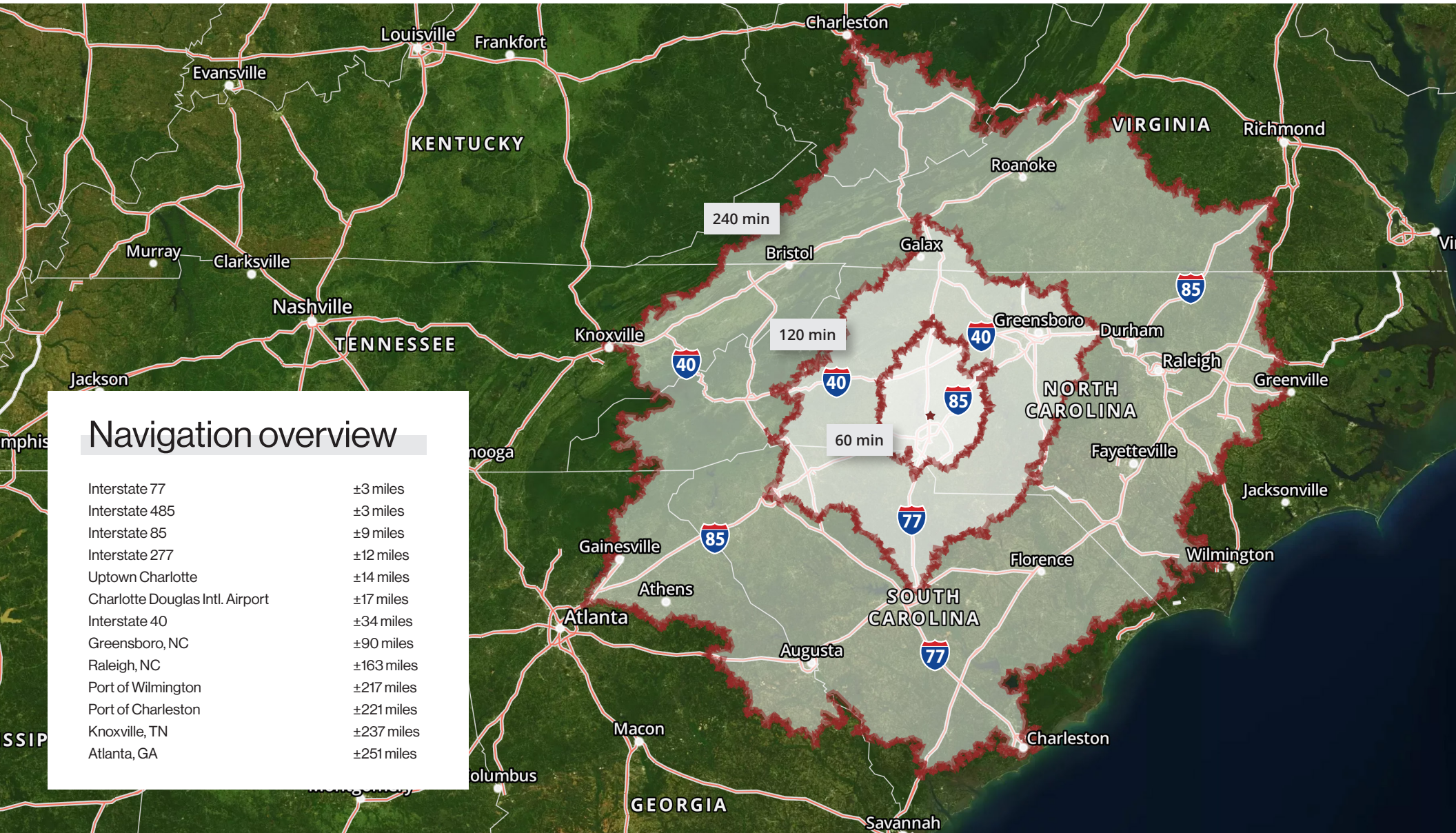
Positioned near the I-485 / I-77 interchange, providing connectivity across the Charlotte region

Located in Charlotte's North industrial submarket, one of the region's fastest-growing distribution hubs

Located 14 miles north of Uptown Charlotte, with close proximity to the Lake Norman labor pool and surrounding residential growth

Located approximately 34 miles south of Interstate 40

## Drive Time Map 60 min, 120 min, 240 min radius



### Navigation overview

Interstate 77	±3 miles
Interstate 485	±3 miles
Interstate 85	±9 miles
Interstate 277	±12 miles
Uptown Charlotte	±14 miles
Charlotte Douglas Intl. Airport	±17 miles
Interstate 40	±34 miles
Greensboro, NC	±90 miles
Raleigh, NC	±163 miles
Port of Wilmington	±217 miles
Port of Charleston	±221 miles
Knoxville, TN	±237 miles
Atlanta, GA	±251 miles



**AXIAL**  
COMMERCE STATION

DEVELOPED BY



GTIS PARTNERS

**AVISON  
YOUNG**

FOR MORE INFORMATION,  
PLEASE CONTACT:

Tom Tropeano, SIOR  
704 413 0228  
[tom.tropeano@avisonyoung.com](mailto:tom.tropeano@avisonyoung.com)

Henry Lobb, SIOR  
704 469 5964  
[henry.lobb@avisonyoung.com](mailto:henry.lobb@avisonyoung.com)

E. & O.E.: The information contained herein was obtained from sources which we deem reliable and, while thought to be correct, is not guaranteed by Avison Young.