

FIVE POINTS OFFICE PLAZA
3947 LENNANE DR
SACRAMENTO, CA
FOR LEASE
6,972 RSF - 14,263 RSF OFFICE SUITES

ETHAN CONRAD
PROPERTIES INC.

**LOBBY REMODEL
COMPLETE!**

VIEW VIRTUAL TOUR

FOR MORE INFORMATION CONTACT:

Todd Newburn
DRE: #01226238
tnewburn@ethanconradprop.com

Grant Keeney
DRE: #00899691
grant@ethanconradprop.com

916.779.1000

ETHAN CONRAD PROPERTIES, INC
1300 NATIONAL DRIVE, SUITE 100 | SACRAMENTO CA, 95834 | 916.779.1000
www.ethanconradprop.com

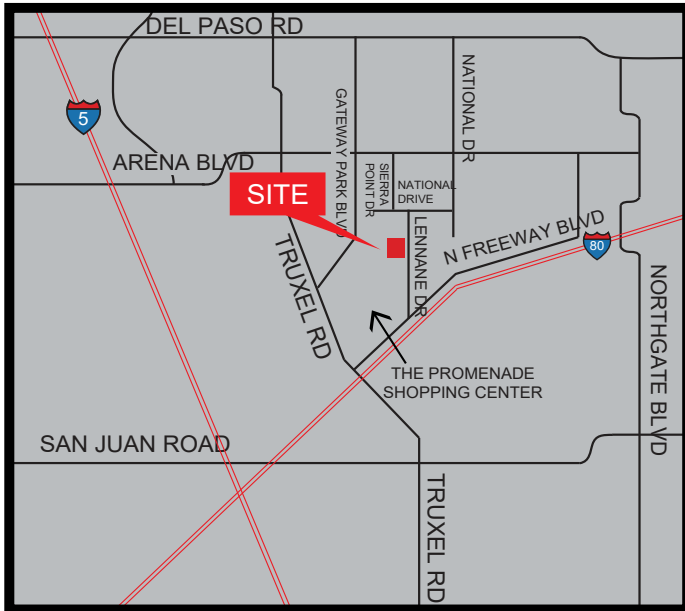
FEATURES:

- Two-story Class-B office building
- Lobby remodel completed
- 4.5/1,000 SF parking ratio
- Mature landscaping
- Fiber to site
- Immediate occupancy

PROPERTY DETAILS:

Attractive, well-maintained Office Building in North Natomas with outstanding access to freeways I-80 and I-5. The property features mature landscaping. Numerous retail and dining options in close proximity. Two blocks from the Promenade Shopping Center.

North Natomas is one of the fastest growing communities in Sacramento. Only minutes from Downtown and Sacramento International Airport.



LEASE RATES:

Suite 240:	6,972 RSF	\$1.59 PSF, Full Service
Suite 250:	7,291 RSF	\$1.59 PSF, Full Service
Suites 240/250:	14,263 RSF	\$1.55 PSF, Full Service

ETHAN CONRAD PROPERTIES, INC.

1300 NATIONAL DRIVE, SUITE 100 | SACRAMENTO CA, 95834 | 916.779.1000

www.ethanconradprop.com

The information contained herein has been obtained from sources we believe to be reliable. However, we cannot guarantee, warrant or represent its accuracy and all information is subject to error, change or withdrawal. An interested party and their advisors should conduct an independent investigation of the property to determine to your satisfaction the suitability of the property for your needs.

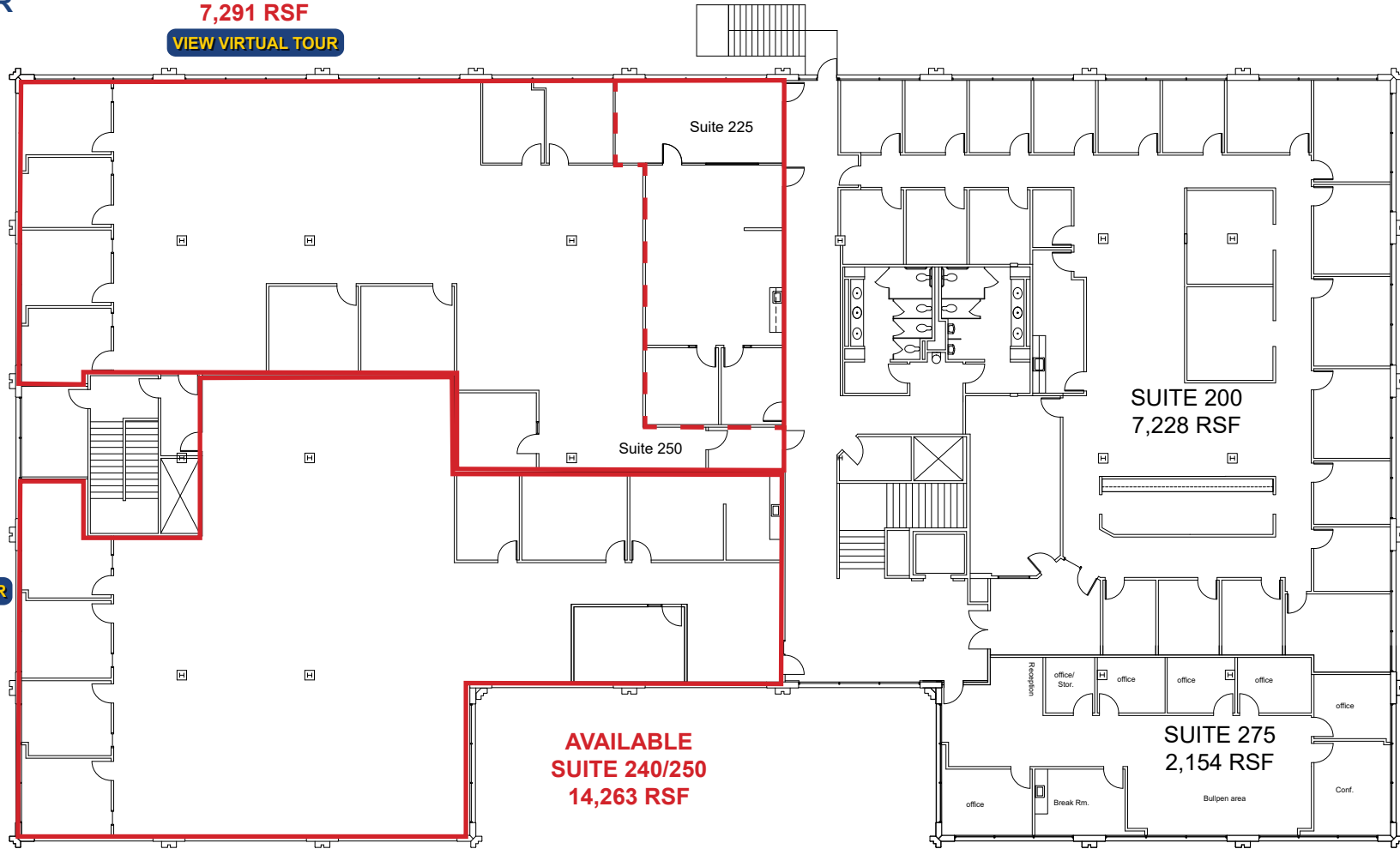
2ND FLOOR

AVAILABLE
SUITE 250
7,291 RSF

[VIEW VIRTUAL TOUR](#)

AVAILABLE
SUITE 240
6,972 RSF

[VIEW VIRTUAL TOUR](#)



AVAILABLE
SUITE 240/250
14,263 RSF

SUITE 200
7,228 RSF

SUITE 275
2,154 RSF

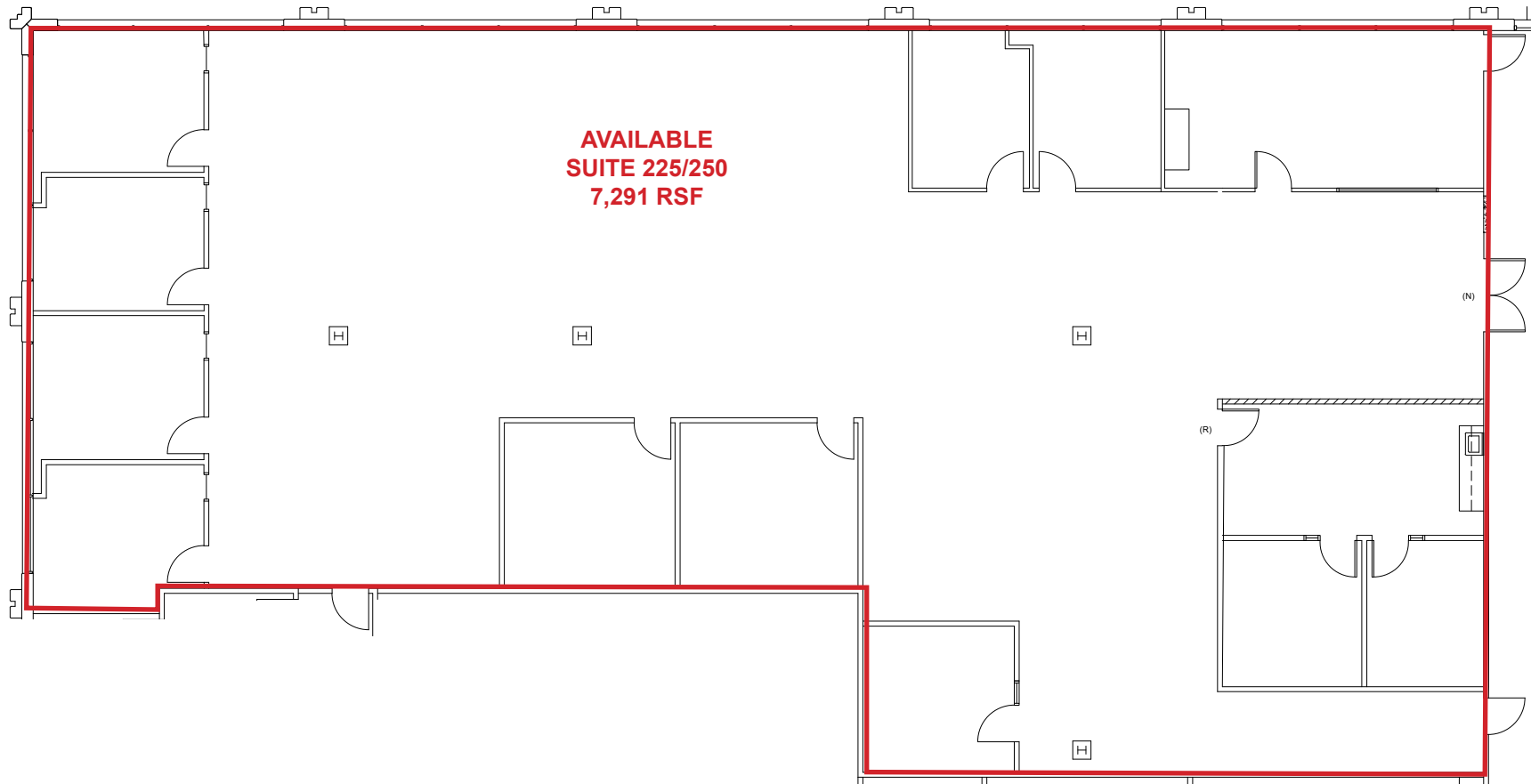
ETHAN CONRAD PROPERTIES, INC.

1300 NATIONAL DRIVE, SUITE 100 | SACRAMENTO CA, 95834 | 916.779.1000

www.ethanconradprop.com

The information contained herein has been obtained from sources we believe to be reliable. However, we cannot guarantee, warrant or represent its accuracy and all information is subject to error, change or withdrawal. An interested party and their advisors should conduct an independent investigation of the property to determine to your satisfaction the suitability of the property for your needs.

2ND FLOOR
SUITE 225/250 PROPOSED PLAN



ETHAN CONRAD PROPERTIES, INC.
1300 NATIONAL DRIVE, SUITE 100 | SACRAMENTO CA, 95834 | 916.779.1000
www.ethanconradprop.com

The information contained herein has been obtained from sources we believe to be reliable. However, we cannot guarantee, warrant or represent its accuracy and all information is subject to error, change or withdrawal. An interested party and their advisors should conduct an independent investigation of the property to determine to your satisfaction the suitability of the property for your needs.



ETHAN CONRAD PROPERTIES, INC.
1300 NATIONAL DRIVE, SUITE 100 | SACRAMENTO CA, 95834 | 916.779.1000
www.ethanconradprop.com

The information contained herein has been obtained from sources we believe to be reliable. However, we cannot guarantee, warrant or represent its accuracy and all information is subject to error, change or withdrawal. An interested party and their advisors should conduct an independent investigation of the property to determine to your satisfaction the suitability of the property for your needs.

FOR LEASE

FIVE POINTS OFFICE PLAZA
3947 LENNANE DR
SACRAMENTO, CA



ETHAN CONRAD PROPERTIES, INC.

1300 NATIONAL DRIVE, SUITE 100 | SACRAMENTO CA, 95834 | 916.779.1000

www.ethanconradprop.com

The information contained herein has been obtained from sources we believe to be reliable. However, we cannot guarantee, warrant or represent its accuracy and all information is subject to error, change or withdrawal. An interested party and their advisors should conduct an independent investigation of the property to determine to your satisfaction the suitability of the property for your needs.