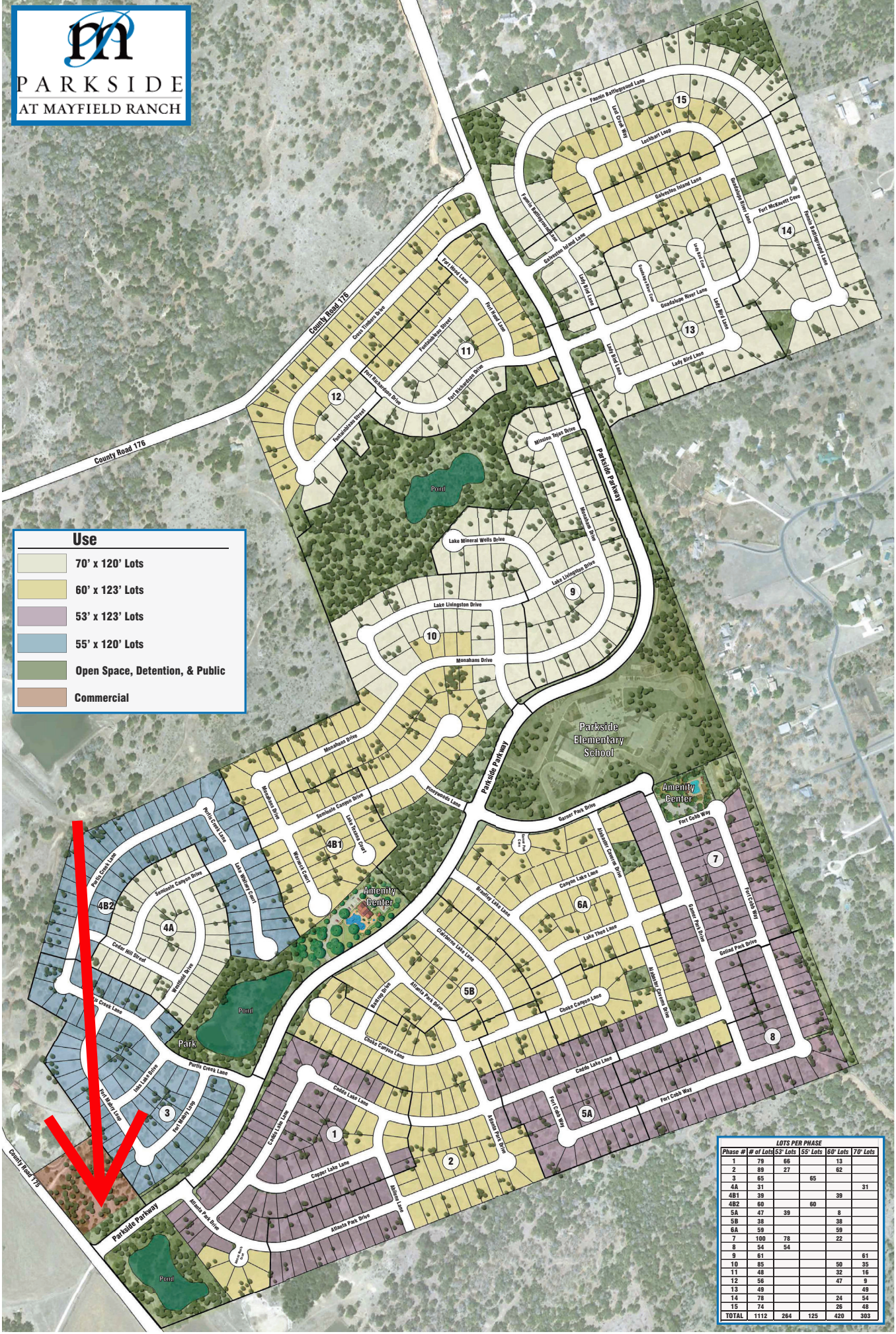




# PARKSIDE AT MAYFIELD RANCH

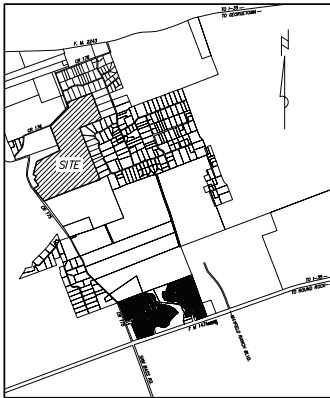
Use	
	70' x 120' Lots
	60' x 123' Lots
	53' x 123' Lots
	55' x 120' Lots
	Open Space, Detention, & Public
	Commercial



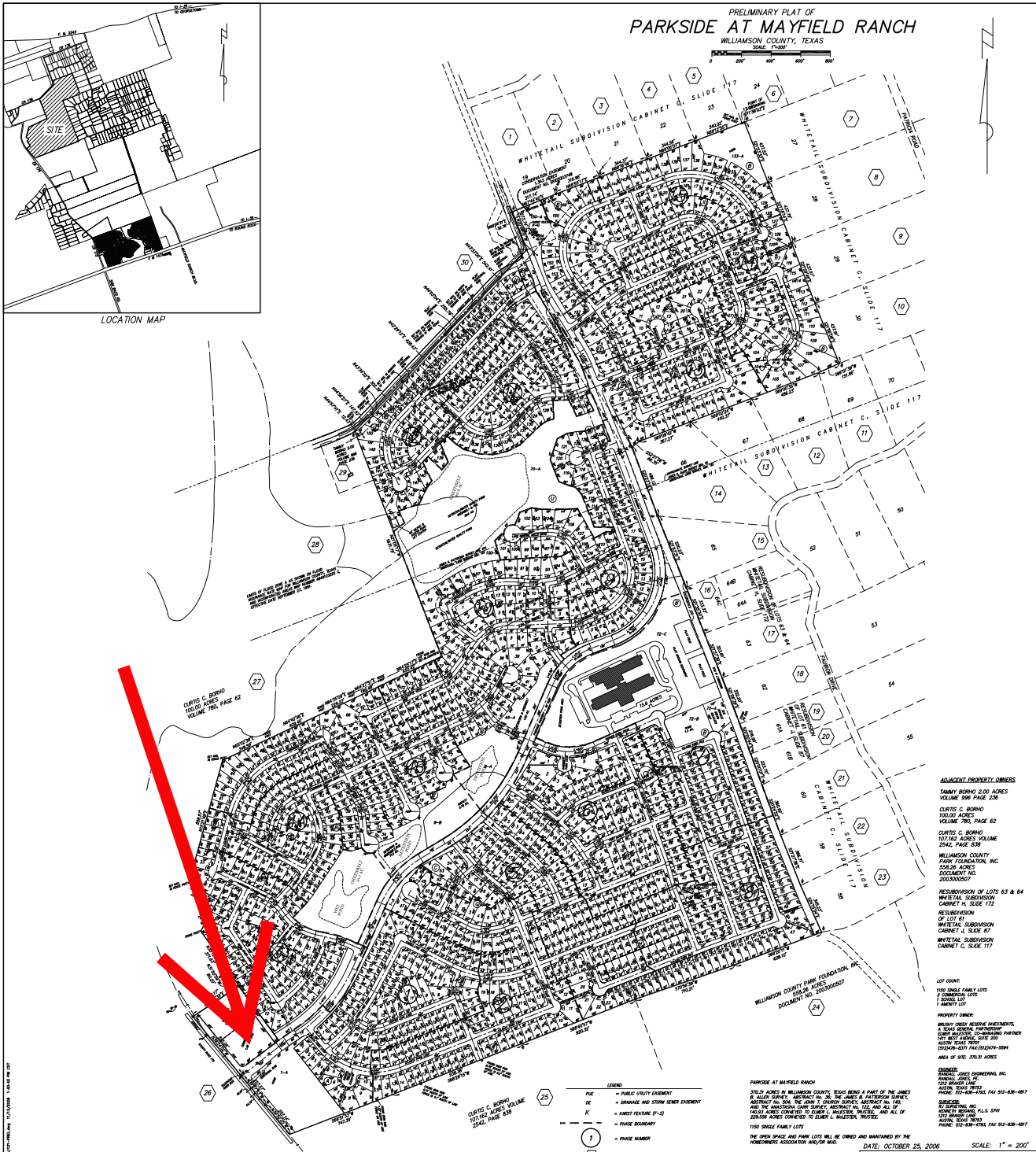
Phase #	# of Lots	LOTS PER PHASE			
		53' Lots	55' Lots	60' Lots	70' Lots
1	79	66			
2	88	27	65	62	
3	65				31
4A	31				
4B1	39			39	
4B2	80		60		
5A	47	39		5	
5B	38			38	
6A	59				
7	100	78		22	
8	54	54			
9	51				61
10	85			50	35
11	48			32	16
12	56			47	9
13	49			24	49
14	78			24	54
15	74			26	48
<b>TOTAL</b>	<b>1112</b>	<b>264</b>	<b>125</b>	<b>420</b>	<b>303</b>

PRELIMINARY PLAT OF  
**PARKSIDE AT MAYFIELD RANCH**  
 WILLIAMSON COUNTY, TEXAS

SCALE: 1" = 200'



LOCATION MAP



**ADJACENT PROPERTY OWNERS:**  
 TAMMY BORHO 2.00 ACRES  
 VOLUME 098 PAGE 236  
 CURTIS C. BORHO  
 100.00 ACRES  
 VOLUME 790, PAGE 62  
 CURTIS C. BORHO  
 107.562 ACRES VOLUME  
 2542, PAGE 839  
 WILLIAMSON COUNTY  
 PARK FOUNDATION, INC.  
 508.28 ACRES  
 DOCUMENT NO.  
 2003000507  
 RESUBDIVISION OF LOTS 63 & 64  
 WHITETAIL SUBDIVISION  
 CABINET H, SLIDE 172  
 RESUBDIVISION  
 OF LOT 6  
 WHITETAIL SUBDIVISION  
 CABINET J, SLIDE 87  
 WHITETAIL SUBDIVISION  
 CABINET C, SLIDE 117

**LOT COUNT:**  
 1100 SINGLE FAMILY LOTS  
 3 COMMERCIAL LOTS  
 1 SCHOOL LOT  
 1 PUBLIC LOT

**PROPERTY OWNER:**  
 BRUNNEN ODESS RESERVE INVESTMENTS  
 8000 BRUNNEN PARKWAY  
 SUITE 1000  
 AUSTIN, TEXAS 78753  
 DEDICATED 04/01/2004  
 AREA OF SITE: 376.31 ACRES

- LEGEND**
- PUBLIC UTILITY EXAMINATION
  - DRAINAGE AND STORM WATER EXAMINATION
  - K — EASEMENT (P-3)
  - PARCEL BOUNDARY
  - 1 — PARCEL NUMBER
  - 2 — LOTS TO ADJACENT PROPERTY OWNER SEE ATTACHED SHEET
  - LOT AREA IN SQUARE FEET
  - ⊙ — BLOCK NUMBER

**PARKSIDE AT MAYFIELD RANCH**  
 THIS PLAT IS IN WILLIAMSON COUNTY, TEXAS BEING A PART OF THE UNITS  
 IN BLOCK 1, SUBDIVISION NO. 10, THE UNITS IN PATERSON PARK,  
 BLOCK 1, SUBDIVISION NO. 10, THE UNITS IN OAKWOOD PARK,  
 BLOCK 1, SUBDIVISION NO. 10, AND THE UNITS IN OAKWOOD PARK,  
 BLOCK 1, SUBDIVISION NO. 10, AND ALL OF  
 THE LOTS ARE CONVEYED TO EMMETT L. WALKER, TRUSTEE, AND ALL OF  
 THE LOTS ARE CONVEYED TO EMMETT L. WALKER, TRUSTEE.  
 1100 SINGLE FAMILY LOTS  
 THE OPEN SPACE AND PARK LOTS WILL BE OWNED AND MAINTAINED BY THE  
 HOMEOWNERS ASSOCIATION AND/OR HOA.

DATE: OCTOBER 25, 2006 SCALE: 1" = 200'  
**RANDALL JONES ENGINEERING, INC.**  
 1212 E. BRAKER LANE, AUSTIN, TEXAS 78753  
 (512) 836-4793 FAX: (512) 836-4817  
**RJ SURVEYING, INC.**  
 1212 E. BRAKER LANE, AUSTIN, TEXAS 78753  
 (512) 836-4793 FAX: (512) 836-4817