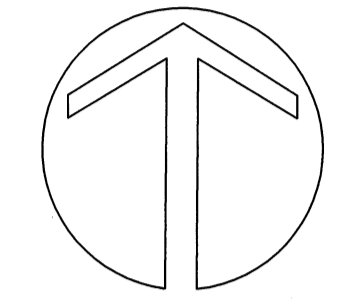
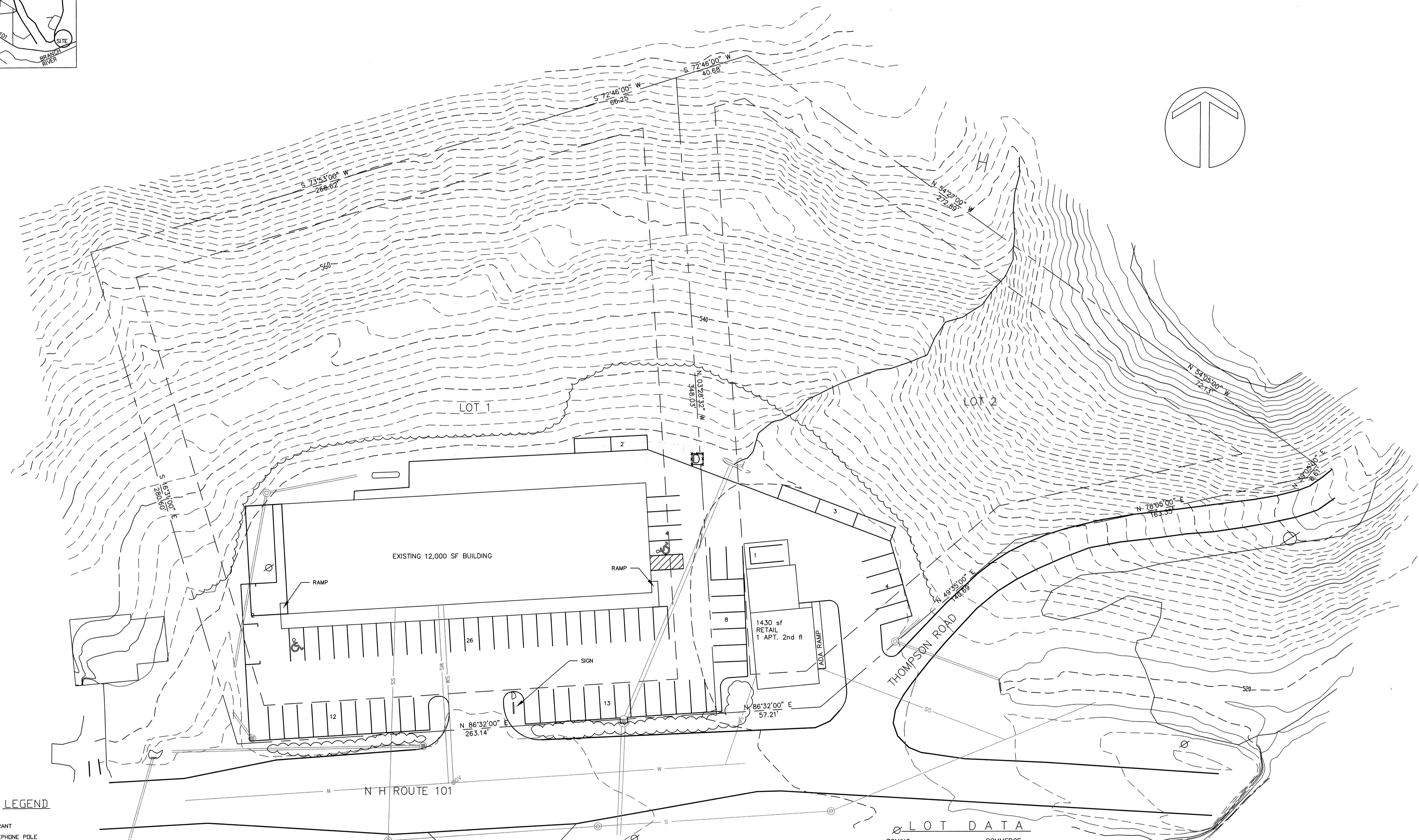




LOCUS



LEGEND

- ⊕ HYDRANT
- ⊙ TELEPHONE POLE
- ⊠ CATCH BASIN
- WS — WATER SERVICE
- WM — WATER MAIN
- SS — SEWER SERVICE
- SM — SEWER MAIN
- E — ELECTRIC, TV, TELEPHONE
- G — GAS LINE
- — — — — EXISTING GRADE
- — — — — PROPOSED GRADE
- ⊠ DUMPSTER WITH 6' HIGH SOLID WOOD FENCE
- ⊙ LIGHT ON POLE
- ⊙ PROPRANE TANK, 5' CHAIN LINK FENCE SURROUND
- ||||| SILT FENCE, HAYBALES

GENERAL NOTES

1. LOCATION OF UTILITIES IS FROM THE CITY OF KEENE ENGINEERING DEPARTMENT RECORDS. LOCATIONS ARE APPROXIMATE. CONTRACTOR TO VERIFY LOCATIONS OF ALL UTILITIES PRIOR TO EXCAVATION.
2. CONTRACTOR TO NOTIFY "DIG SAFE" AT 1-800-225-4977 A MIN. OF 72 HOURS PRIOR TO THE START OF EXCAVATION.
3. THIS PROPERTY IS NOT LOCATED WITHIN THE 100 YEAR FLOODPLAIN FOR THE CITY OF KEENE.

LOT DATA

ZONING	COMMERCE
TAX MAP #	
LOT 1	68-02-6
LOT 2	68-02-1
LOT AREA	
LOT 1	92584 SF - 2.125 AC
LOT 2	63363 SF - 1.455 AC
LOT COVERAGE	
LOT 1	13,600 SF - 15%
BUILDING PAVING	21,275 SF - 23%
LOT 2	
BUILDING PAVING	2000 SF - 3%
	6730 SF - 11%
PARKING	
LOT 1	
13,500 SF OFFICE/RETAIL/SERVICE	68 SPACES
LOT 2	
OFFICE 400 SF	2 SPACES
APARTMENTS	4 SPACES
PARKING REQUIRED	74 SPACES
PARKING PROVIDED	75 SPACES



REVISIONS: DATE:

KAREN B. CURRAN
117 WEST STREET
KEENE, NH 03431



CURRAN BUILDING
640 & 642 MARLBORÓ RD.
KEENE, NH 03431

LOCATION PLAN

SCALE - 1"=30'
DATE: NOV 19, 2010
SHEET # 1