

SEATAC LOGISTICS PARK

BUILDING E SUBLEASE

18900 8TH AVE S
SEATAC, WA 98148



AVAILABLE
NOW

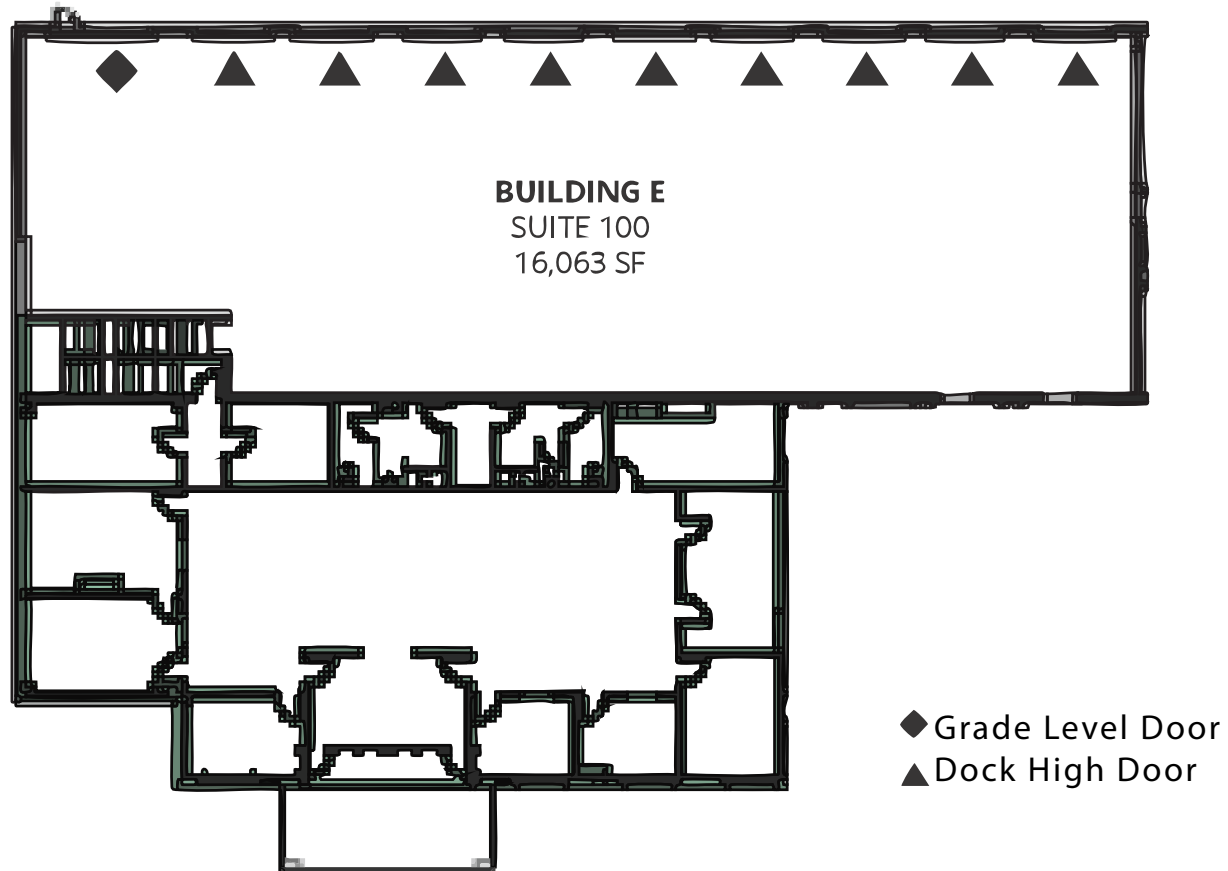
SUITE 100
16,063 RSF

Master Lease Expires
November 30, 2030

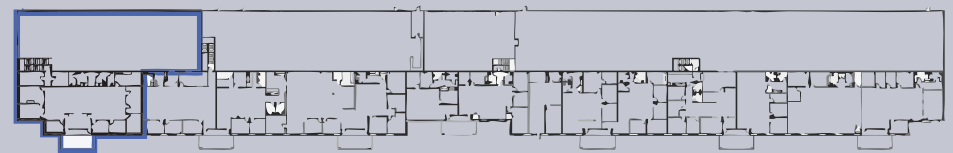
FLINN
FERGUSON
cresa

SUITE 100 | 16,063 RSF

Master Lease Term Through
November 30, 2030



- 16,063 SF Total
- 4,247 SF Office
- 9 Dock High Doors
- 1 Oversized Grade Level Door
- 24' Clear Height



8TH AVENUE SOUTH

IAN DUCARME
206.626.0884
IAN@FLINNFERGUSON.COM

JAKE MICHAEL
206.626.0897
JAKE@FLINNFERGUSON.COM

FLINN
FERGUSON
cresa

