

683 - 689 VERNON WAY, EL CAJON

FOR SUBLEASE | ± 4,400 - 8,800 SF WAREHOUSE / OFFICE | \$1.45 PSF



EXCLUSIVELY LISTED BY

SHAYAN BAHRI
shayan.bahri@ip-cre.com
818.292.4657
Lic. #02149868

AIDAN JAMES
aidan.james@ip-cre.com
619.631.8661
Lic. #02060510


INLAND PACIFIC



683 - 689
Vernon Way

VERNON WAY

N JOHNSON AVE

PROPERTY HIGHLIGHTS



683 - 689 Vernon Way, El Cajon CA 92020



± 4,400 SF - 8,800 SF (Upgraded Office / Warehouse)



± 8,500 SF Yard (Fenced and Gated)



Lease Rate: \$1.45 Gross + Utilities (Availability: 30-60 Days; Through December 2029)



2 12'x12' Grade Level Doors (1 Glassed-In)



15' Clear Height



Power: 400 Amps



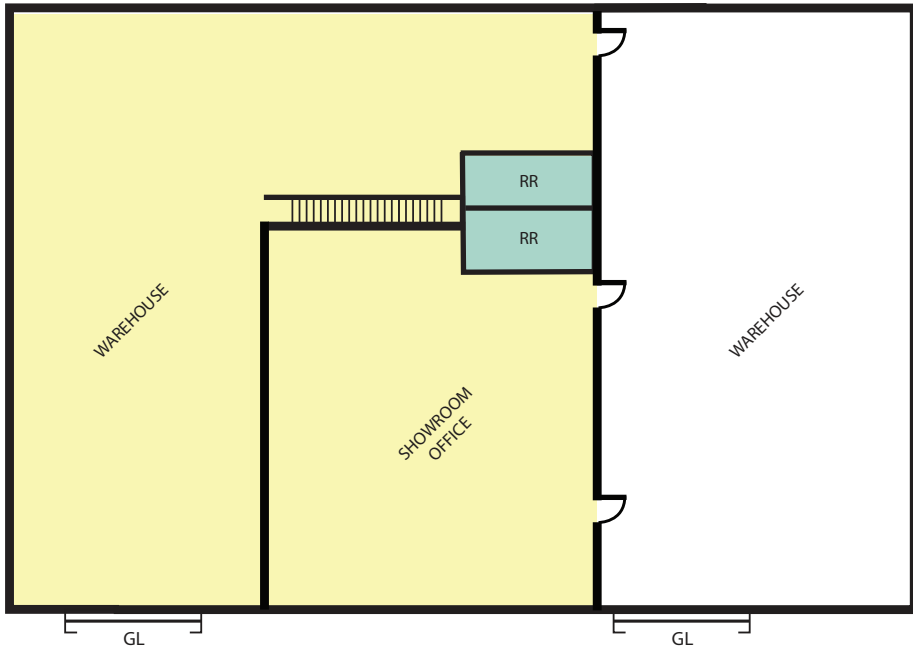
Zoning: M ZONE



Proximity to I-8 and Highways 67, 52 & 125; Corner Lot; Signage on Johnson Ave and Vernon Way

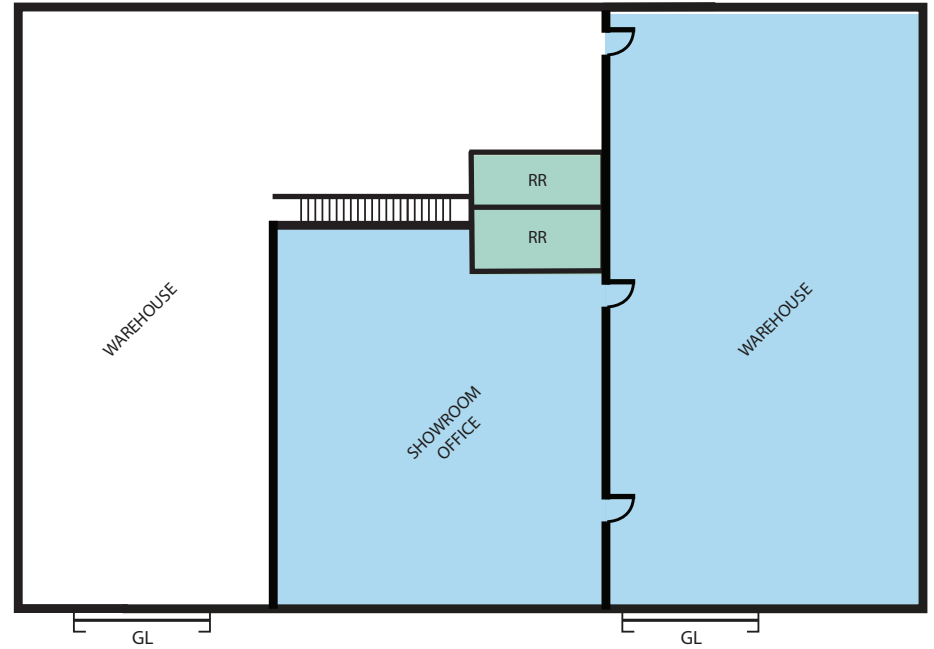
Information herein has been obtained from sources deemed reliable, however its accuracy cannot be guaranteed. The user is required to conduct their own due diligence and verification.

FLOOR PLAN



SUITE A
1st Level Warehouse
with
2nd Level Showroom/Office

- Restrooms (2)
- Suite B
- Suite A

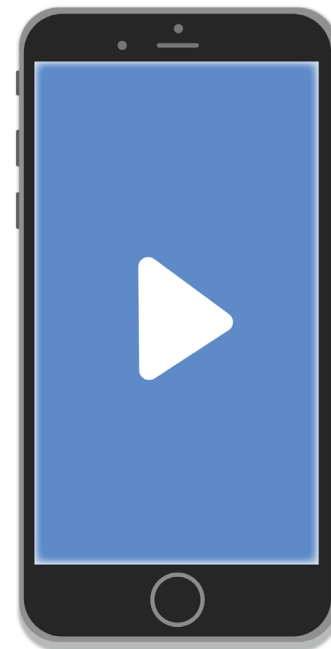


SUITE B
1st Level Warehouse
with
1st Level Showroom/Office

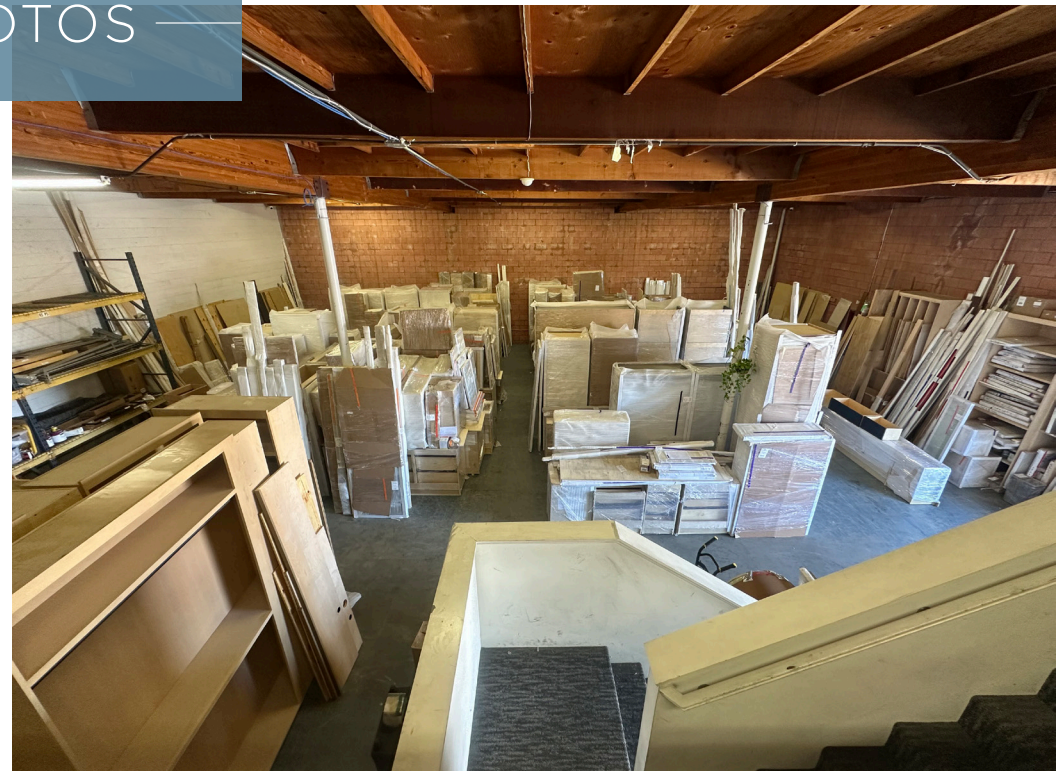
GL = Grade Level Door
 Drawing not to scale



VIDEO TOUR



PROPERTY
PHOTOS





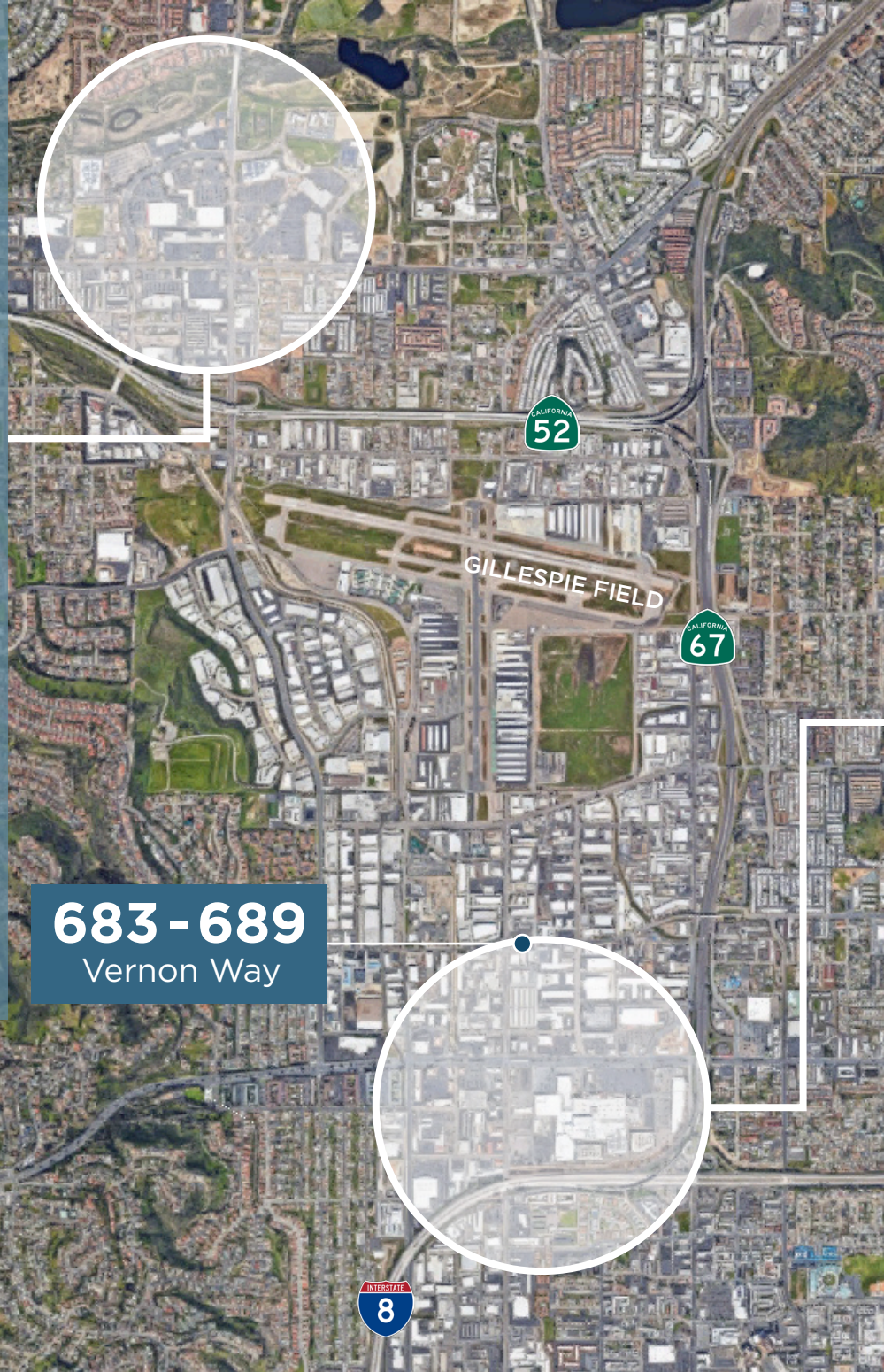
PROPERTY
PHOTOS



AMENITIES

- Chick-fil-A
- Starbucks
- Epic Wings
- Subway
- Phil's BBQ
- Chipotle
- Taco Bell
- Jersey Mike's
- Chevron
- USPS
- 7-Eleven
- O'Reilly
- Costco
- Vons
- Sprouts
- Lowe's
- UPS Store
- Target
- Chase Bank
- Union Bank
- Verizon
- AT&T
- T-Mobile
- AutoZone

683 - 689
Vernon Way



- In-N-Out
- Urbane Cafe
- Dunkin'
- KFC
- McDonald's
- Panera Bread
- Burger King
- Jamba Juice
- Five Guys
- Texas Roadhouse
- Home Depot
- Walmart
- CVS
- Best Buy
- Smart & Final
- Bank of America
- Mission Federal
- Wells Fargo
- Navy Federal

FOR MORE INFORMATION PLEASE CONTACT

SHAYAN BAHRI
shayan.bahri@ip-cre.com
818.292.4657
Lic. #02149868

AIDAN JAMES
aidan.james@ip-cre.com
619.631.8661
Lic. #02060510

