

MEDICAL / PROFESSIONAL SUITE FOR LEASE

TOWN & COUNTRY MEDICAL PLAZA - NEXT TO JFK MEMORIAL



±1,600 SQ FT - \$1.50/SF MG + \$400/MO. HOA FEES

81709 DR. CARREON BLVD, SUITE B1, INDIO, CA

- Perfect floor plan for Any Healthcare or Professional Use
- Fully Built Out w/Reception area, Exam or Private Offices
- Center of Desirable Office Complex
- West of Monroe, One Block South of Hwy 111



www.baxleyproperties.com
Phone: 760-773-3310
Fax: 760-773-3013
73712 Alessandro Drive, Ste B-4, Palm Desert, CA 92260

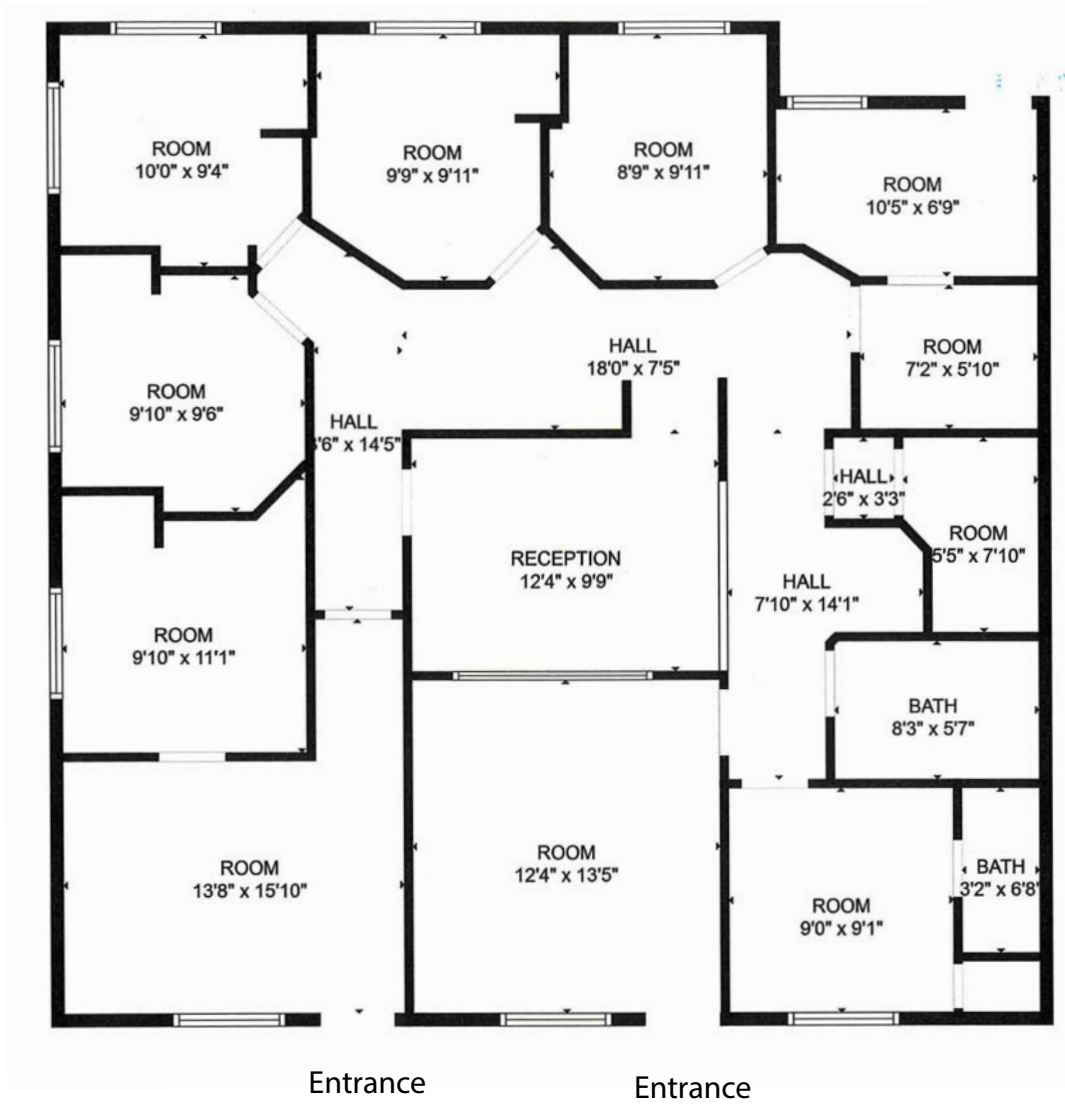
Matthew Longstreth
Cell: 949-293-1314
Office: 760-773-3310
matthew@BaxleyProperties.com
CA DRE License # 01322594

DISCLAIMER: The information above has been obtained from sources believed reliable. While we do not doubt its accuracy, we have not verified it and make no guarantee, warranty or representation about it.

4/27/2026

MEDICAL / PROFESSIONAL SUITE FOR LEASE

81709 DR. CARREON BLVD., STE B1, INDIO, CA



Parking Lot

Parking Lot

DISCLAIMER: The information above has been obtained from sources believed reliable. While we do not doubt its accuracy, we have not verified it and make no guarantee, warranty or representation about it.