

GREAT WOLF RETAIL

Trophy Retail In WI Dells' #1 Tourist Corridor

*Shadow-Anchored by Great Wolf Lodge
and Outlets at the Dells*

OFFERING MEMORANDUM

1300 GREAT WOLF DRIVE
LAKE DELTON, WI

FOUNDERS 3
REAL ESTATE SERVICES





Contact

Conor Farrell

414.249.2215

414.238.7656

cfarrell@founders3.com

Tom Treder, CCIM

414.249.2207

262.853.2822

ttreder@founders3.com

Tom Bruss

414.249.2220

414.688.8820

tbruss@founders3.com

The material contained in this Offering Memorandum is confidential and for the purpose of the Real Estate described herein. It is subject to the terms and provisions of the Confidentiality Agreement signed by the recipient of this material and is not to be used for any purpose or made available to any other person without the express written consent of Founders 3 Retail Services, LLC (“Broker”).

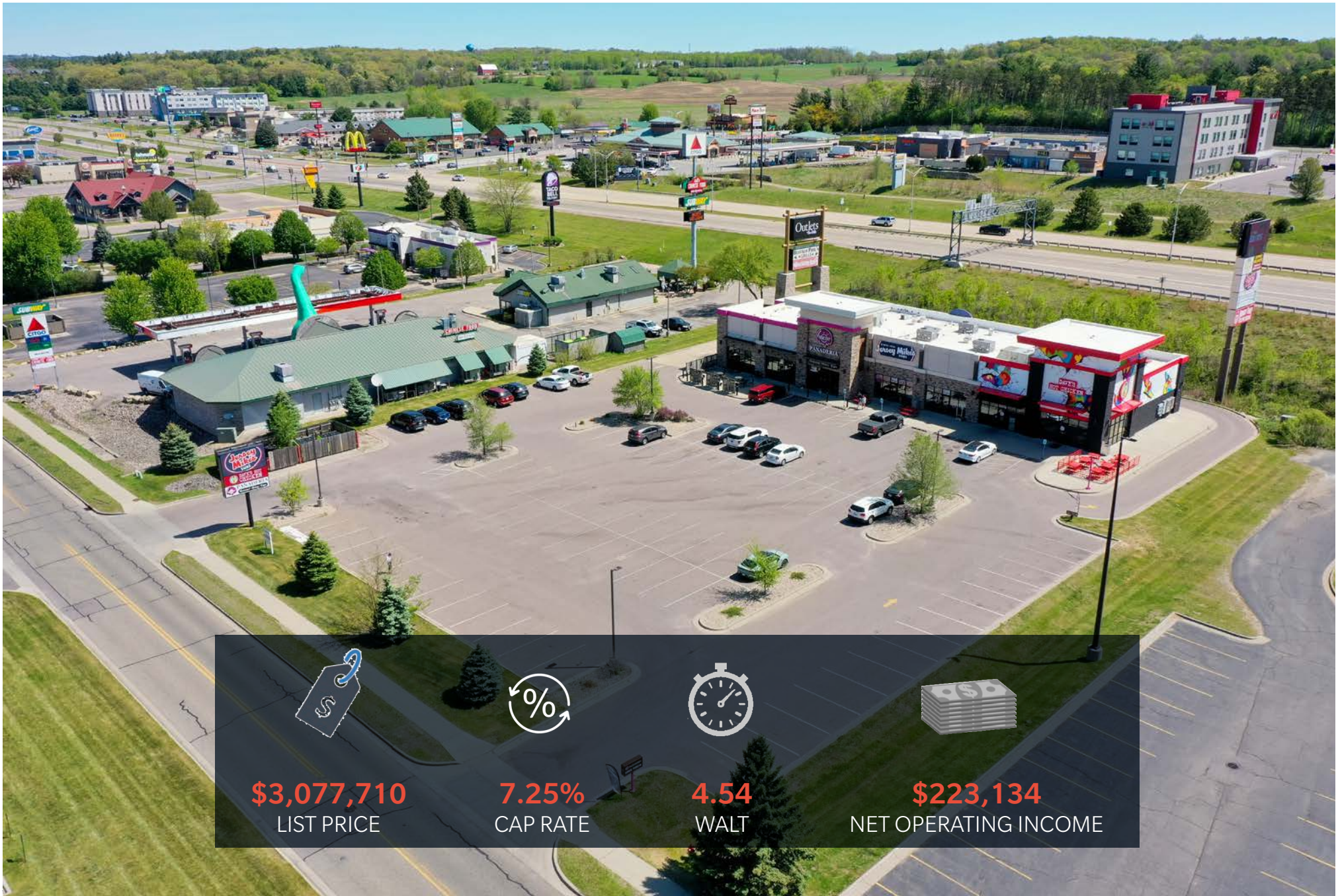
This Offering Memorandum was prepared on May 12, 2026 by Broker solely for the use of prospective purchasers of Great Wolf Retail, 1300 Great Wolf Drive, Lake Delton, WI (the “Real Estate”). Neither Broker, WWD6, LLC nor any of their respective officers, employees or agents, make any representation or warranty, expressed or implied, as to the completeness or the accuracy of the material contained in the Offering Memorandum or any of its contents and no legal commitments or obligations shall arise by reason of the package or any of its contents. Seller reserves the right to eliminate any portion or all of the Real Estate for any offer for sale at any time prior to the completion of a binding contract of sale executed by both Seller and a prospective purchaser.

Prospective purchasers of the Real Estate are advised (i) that changes may have occurred in the condition of the Real Estate since the time of the Offering Memorandum or the financial statements therein were prepared and that (ii) all financial projections are provided for general reference purposes only in that they are based on assumptions relating to the general economy, competition, and other factors beyond the control of Broker and the Seller and therefore, are subject to material variation. Prospective purchasers of the Real Estate are advised and encouraged to conduct their own comprehensive review and analysis of the Real estate.

The Offering Memorandum is a solicitation of interest only and is not an offer to sell the Real Estate. The Seller and Broker expressly reserve the right, at their sole discretion, to reject any or all expressions of interest or offers to purchase the Real Estate and expressly reserve the right, at their sole discretion, to terminate discussions with any entity at any time with or without notice. The Seller shall have no legal commitment or obligations to any entity reviewing the Offering Memorandum or making an offer to purchase the Real Estate unless and until a written agreement satisfactory to the Seller hereunder have been satisfied or waived.

This Offering Memorandum is confidential. By accepting the Offering Memorandum, you agree (i) that you hold and treat the Offering Memorandum and its contents in the strictest confidence, (ii) that you will not photocopy or duplicate any part of the Offering Memorandum, (iii) that you will not disclose the Offering Memorandum or any of its contents to any other entity without the prior written authorization of Broker, and (iv) that you will not use the Offering Memorandum in any fashion or manner detrimental to the Interest of the Seller or Broker.

The terms and conditions stated in the section will relate to all of the sections of the package as if stated independently therein. If, after reviewing this package, you have no further interest in purchasing the Property at this time, kindly return this brochure to Broker at your earliest convenience.



\$3,077,710
LIST PRICE



7.25%
CAP RATE



4.54
WALT



\$223,134
NET OPERATING INCOME

TABLE OF CONTENTS

- Property Overview **5**
- Offering Highlights **6**
- Tenant Overview **7 - 8**
- Aerials **9 - 10**
- Location and Market Overview **11-14**

PROPERTY OVERVIEW

ACCESS

- Two access points off of Great Wolf Drive

YEAR BUILT

- 2015

TRAFFIC COUNTS

- I-90/94: 40,700
- Highway 12: 16,500

PARCEL

Approximately 1.95 Acres

PARKING

- 50 Parking Spots
- Additional parking via cross-access/parking easement with neighboring property

ZONING

- Commercial

Prominent visibility from Highway 12 provides exposure to consistent local and tourist traffic

AREA DEMOGRAPHICS

2026 Demographics

	1 MILE	3 MILE	5 MILE
Population	1,005	5,940	12,208
AVG HH Income	\$75,106	\$88,282	\$96,763
Total Employees	955	4,460	8,741

**OVER \$96K
AVERAGE
HOUSEHOLD
INCOMES IN A
1,3, AND 5-MILE
RADIUS OF
THE SUBJECT
PROPERTY**

OFFERING HIGHLIGHTS



OFFERING

Pricing	\$3,077,710
Cap Rate	7.25%
Net Operating Income	\$223,134
Lease Types	NNN
Landlord Responsibilities	Contact Broker

PROPERTY SPECIFICATIONS

Rentable Area	9,700 SF
Year Built/Remodeled	2015
Ownership	Fee Simple (Land and Building)

TENANT OVERVIEW



Jersey Mike's Subs is a U.S.-based fast-casual restaurant chain specializing in submarine sandwiches. Founded originally as Mike's Submarines in 1956 in Point Pleasant, New Jersey, the company was acquired in 1975 by then-17-year-old Peter Cancro, who later transformed the single sandwich shop into one of the fastest-growing franchise brands in the restaurant industry.

Today, Jersey Mike's operates more than 3,200-3,500 locations across the United States and internationally, including Canada and Mexico. The company is headquartered in Manasquan, New Jersey, and is known for its "Mike's Way" sandwich preparation style, featuring freshly sliced meats and cheeses prepared in front of customers.

Jersey Mike's business model is heavily franchise-driven, with strong emphasis on operational consistency, community involvement, and high unit-level sales performance. The brand has experienced rapid expansion over the past decade, supported by strong franchise economics and increasing consumer demand for premium sandwich concepts. Industry reports estimate systemwide-sales exceeding \$3 billion annually.



Dave's Hot Chicken is a rapidly growing fast-casual restaurant chain specializing in Nashville-style hot chicken tenders and sliders. Founded in 2017 in Los Angeles, California, the brand began as a small parking-lot pop-up created by four childhood friends, with an initial investment of just \$900.

The company is headquartered in Pasadena, California, and has become one of the fastest-growing restaurant franchise concepts in North America. Dave's Hot Chicken is known for its streamlined menu, bold spice levels, strong social media presence, and youthful brand identity. Its signature offerings include chicken tenders, sliders, fries, mac & cheese, and seven heat levels ranging from "No Spice" to the extremely hot "Reaper."

Growth accelerated after the company partnered in 2019 with an investor group led by former Wetzel's Pretzels CEO Bill Phelps, who helped professionalize operations and expand the franchise model nationally.

As of 2025, Dave's Hot Chicken operates more than 300 locations globally across the United States, Canada, the Middle East, and the United Kingdom, with franchise rights sold for over 1,000 future locations. The company has expanded aggressively through franchising and international development agreements, including major growth plans across Europe and the Middle East.

TENANT OVERVIEW



Dells Panaderia is a family-owned bakery, cafe, and restaurant located in the Wisconsin Dells/Baraboo area of Wisconsin. Founded in 2024, the company specializes in traditional Mexican baked goods, custom cakes, coffee beverages, and freshly prepared breakfast, lunch, and dinner offerings.

The company's concept blends a traditional Mexican panaderia with a modern cafe and casual dining experience. Its menu includes authentic pastries and breads such as Cuernos, Bolillos, Polvorones, Besos, Pan de queso, and more. In addition to bakery items, Dells Panaderia offers specialty coffee drinks, breakfast plates, tacos, quesadillas, sandwiches, and made-to-order custom cakes for celebrations and catering events.

Dells Panaderia positions itself as an emerging regional hospitality and food-service brand focused on delivering authentic Latin bakery products alongside an approachable dine-in experience. The company's branding centers on family tradition, handcrafted baking, and creating a welcoming atmosphere "where every bite feels like home".





LOCATION & MARKET OVERVIEW



The Village of Lake Delton, located in Sauk County, Wisconsin, serves as the commercial and tourism heart of the greater Wisconsin Dells region - one of the Midwest's most recognized family vacation destinations. Positioned along Interstate 90/94 and U.S. Highway 12, Lake Delton benefits from exceptional regional access and year-round visitor traffic driven by hospitality, recreation, and entertainment.

Lake Delton has an estimated 2025 population of approximately 3,905 residents with an average household income of \$79,419 and a median age of 39.5, reflecting a younger and service-oriented population compared to many Wisconsin communities. The average household size is 2.1 people, and the village supports approximately 389 businesses employing more than 8,000 people, far exceeding its resident population due to its tourism economy. Employment is heavily concentrated in hospitality, entertainment, and service sectors, with 30% of jobs in services and an exceptionally low unemployment rate of just 0.8%.

The broader Sauk County market strengthens the area's economic base, with over 67,000 residents, 3,257 businesses, and more than 41,700 employees, along with an average household income of \$101,643. The Wisconsin Dells/Lake Delton trade area also continues to show growth, with nearby household and population increases supporting long-term retail and commercial demand.

Tourism is the defining economic driver of the region. Wisconsin Dells is widely known as the "Waterpark Capital of the World", home to more waterparks than any community on earth, including over 20 waterpark facilities and more than 200 waterslides, according to WisDells.com. Major attractions include Great Wolf Lodge Wisconsin Dells, Kalahari Resorts & Conventions Wisconsin Dells, Noah's Ark Waterpark, Mt. Olympus Water & Theme Park, and the iconic Dells Boat Tours along the Wisconsin River sandstone cliffs. The official tourism bureau highlights over 100 attractions, scenic river tours, golf, shopping, dining, entertainment venues, and extensive resort lodging options exemplifying one of America's premier drive-to-resort markets.

Overall, Lake Delton offers a unique combination of tourism-driven economics, strong visitor traffic, and regional growth. Its location at the center of the Wisconsin Dells market makes it one of Wisconsin's strongest destinations for hospitality, retail investment, and entertainment-focused development.

LOCATION & MARKET OVERVIEW



SERVES THE BARABOO - WISCONSIN DELLS REGION

- Baraboo/West Baraboo - 14,720 residents
- Lake Delton/Wisconsin Dells - 6,674 residents

AREA TOURISM

- Devil's Lake State Park (Baraboo) - 2.4 million
- Wisconsin Dells - 4.5 million
- **On average there are 132,500 visitors on any given weekend**
*This exceeds the entire population of Sauk County (57,000), making the region the 4th most populated "city" in Wisconsin.

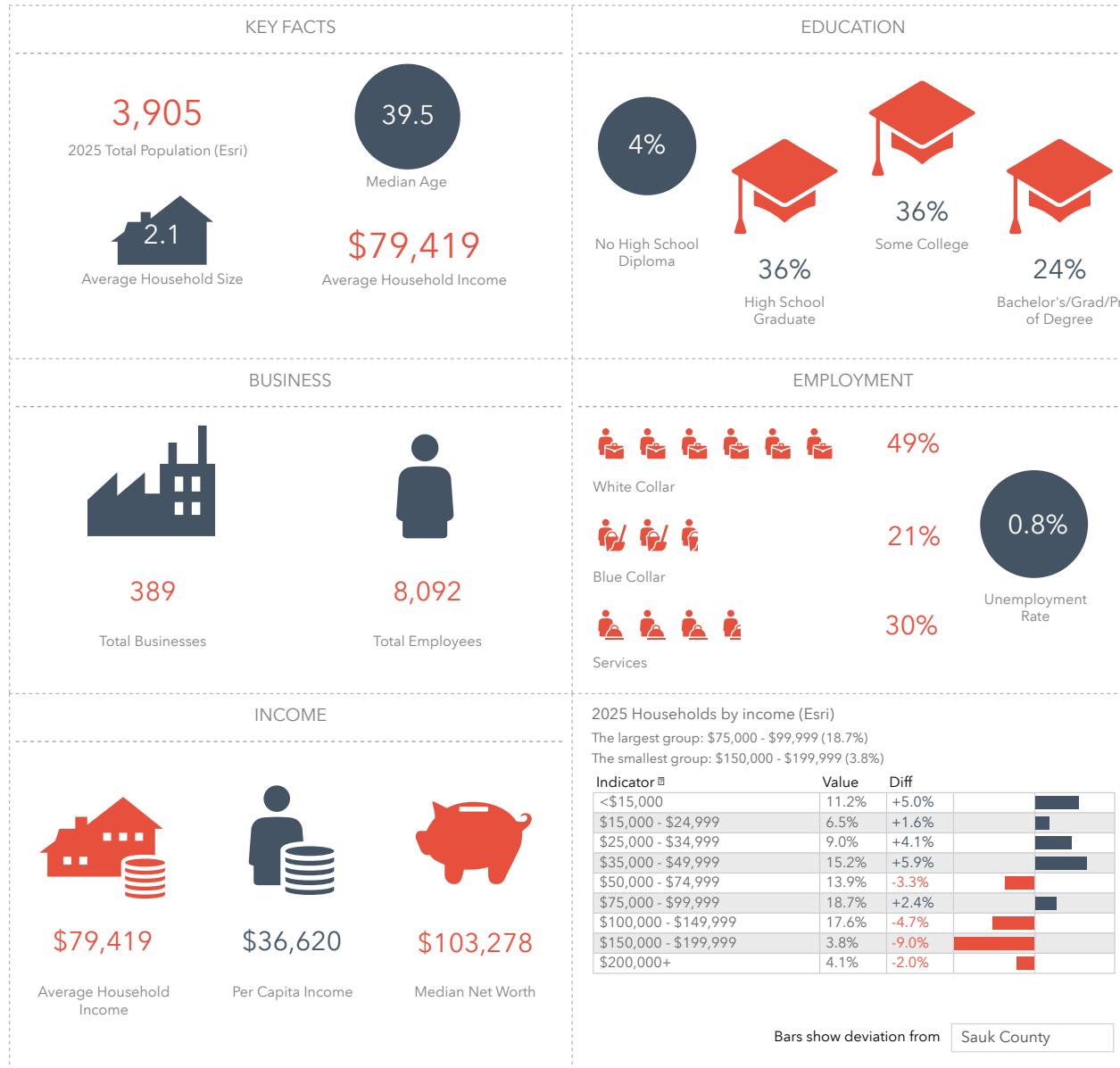
VITAL TO WISCONSIN'S ECONOMY

- #2 in Direct Visitor Impact behind Milwaukee County (\$1,652.3M)
- #3 in Total Economic Impact behind Milwaukee and Dane County (\$1,964M)
- #3 in State and Local Tax Generation, equal to nearly 10% of all taxes generated (\$150.7M) out of 72 counties

AIRPORT GROWTH AND EXPANSION

- Two new corporations will base at Baraboo-Wisconsin Dells Regional Airport (DLL) in 2026
- Master Plan is to add 1,000 feet of runway (6,000 feet) with an objective of bringing tourists and other corporations directly into the region

LOCATION & MARKET OVERVIEW - LAKE DELTON



LOCATION & MARKET OVERVIEW - SAUK COUNTY

