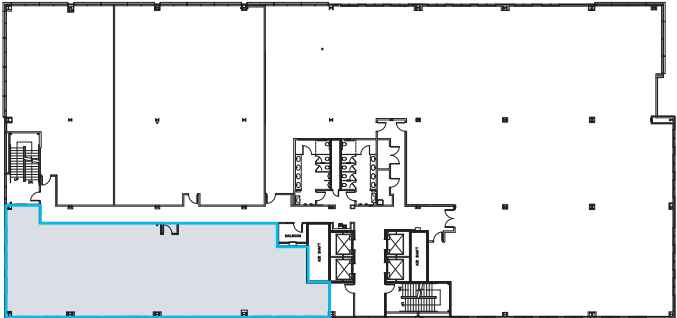
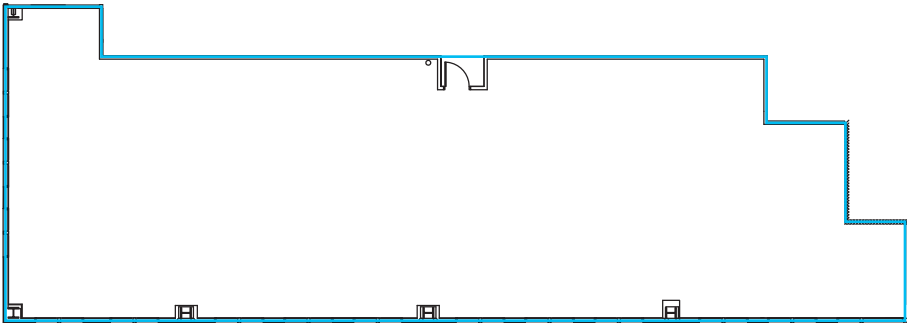


# MADISON SQUARE



## 250 SEVENTH

Suite 225 – 3,788 SF



2nd Floor Overall Plan



**MARK STRATZ**  
Senior Vice President  
602.882.4621  
mark.stratz@transwestern.com

**SCOTT BAUMGARTEN**  
Senior Vice President  
602.300.8660  
scott.baumgarten@transwestern.com

**VERUS**

