



## Opportunity

- First floor suite with 2,422 sf available
- Second floor suite with 1,875 sf available
- Can demise to 875 sf and 1,000 sf
- Centrally located office building with quick access to I-40, I-24, and I-440
- Building overlooks I-40 East between Elm Hill Pike, and Murfreesboro Road
- Aggressive full service rates (less in-suite janitorial)
- After hours key card access

## Get more information

**Ben Burns, CCIM**

Vice President

+1 615 727 7432

[ben.burns@avisonyoung.com](mailto:ben.burns@avisonyoung.com)

## Floor one

Suite 122  
2,422 sf

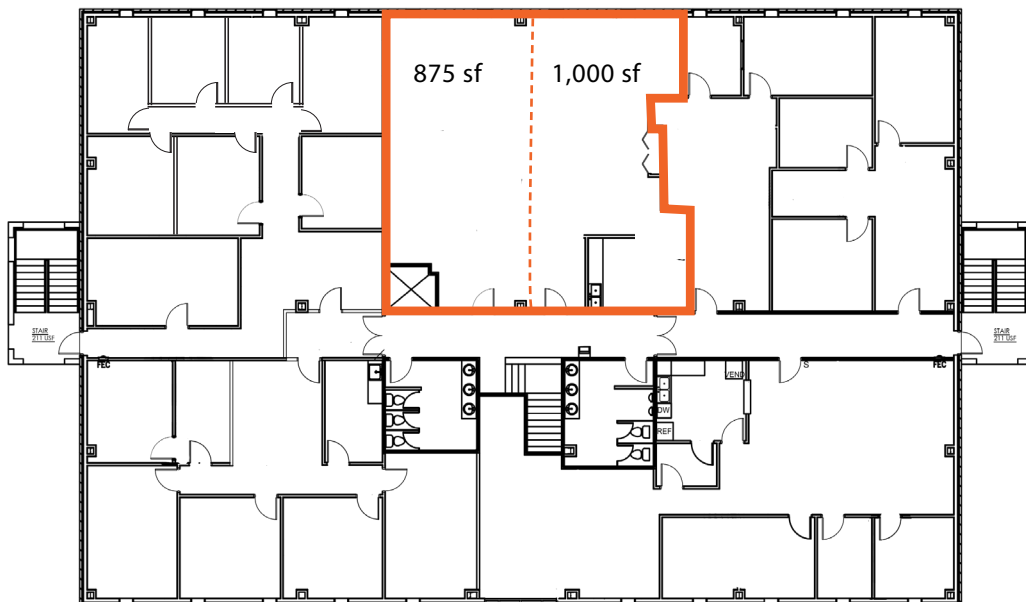


Suite 100  
1,807 sf  
*Available 9/1/26*

## Floor two

Suite 220  
1,875 sf

*Can demise to  
875 sf and 1,000 sf*



## Map

