

FOR LEASE

19700 38TH AVE E | SPANAWAY

257,400 SF

NEWMARK

THAD MALLORY, SIOR  
Executive Vice Chairman  
425-362-1410  
thad.mallory@nmrk.com

TAYLOR HOFF, SIOR  
Vice Chairman  
425-362-1388  
taylor.hoff@nmrk.com

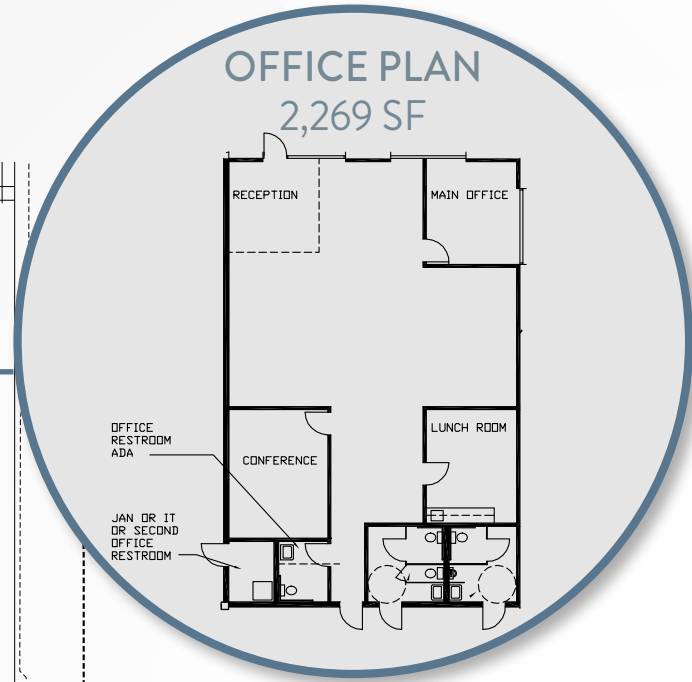
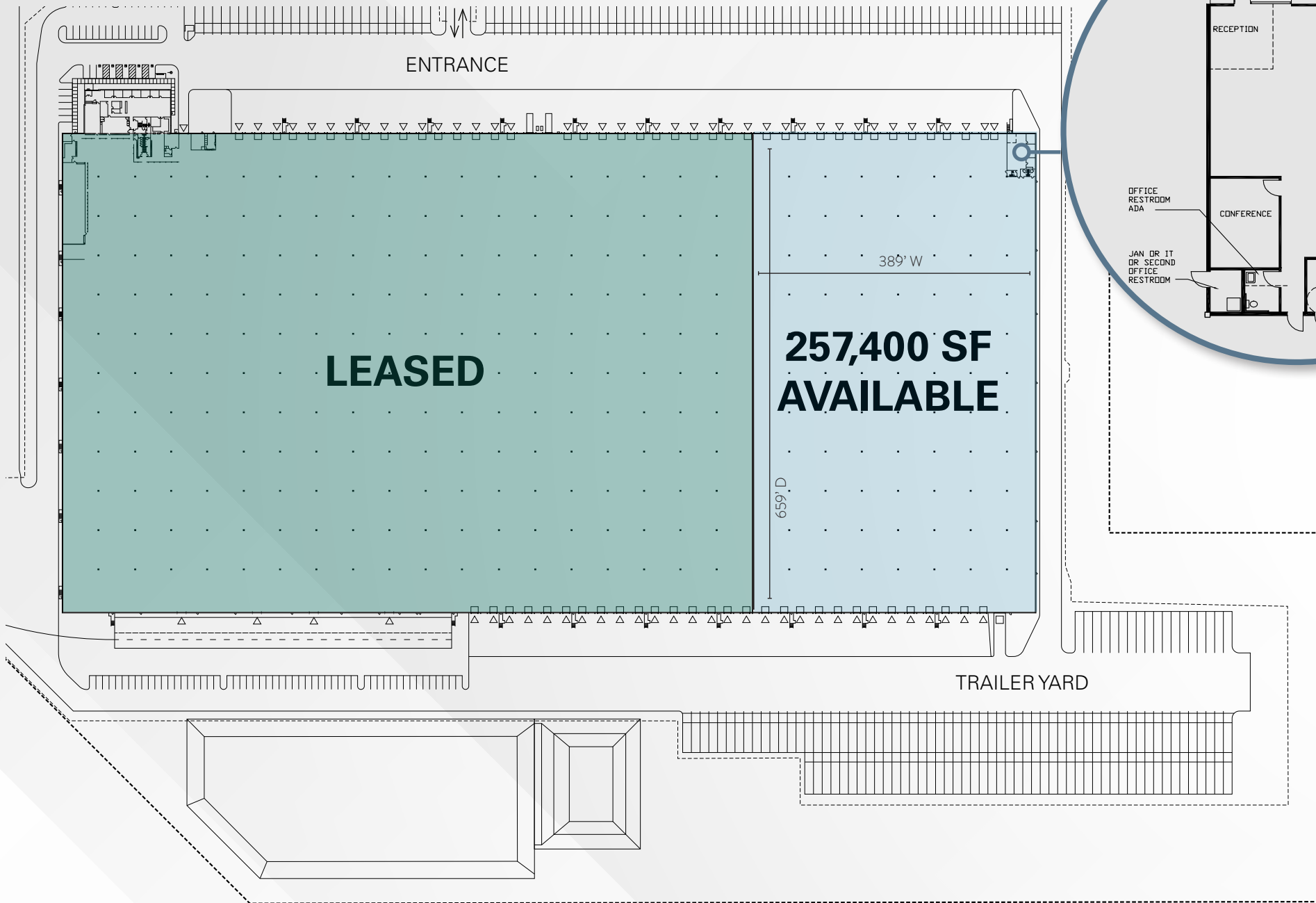
MORGAN RICHEY, SIOR  
Managing Director  
425-362-1409  
morgan.richey@nmrk.com

# PROPERTY OVERVIEW



<b>Address</b>	19700 38th Ave E Spanaway, WA
<b>Available Size</b>	257,400 SF (2,269 SF Ofc)
<b>Loading</b>	27 Dock High Doors 1 Grade Level Door
<b>Clear Height</b>	30'
<b>Column Spacing</b>	50' x 54'
<b>Trailer Parking</b>	64 Dedicated Trailer Stalls

# FLOOR PLAN



# REGIONAL AERIAL



**Drive Times**  
**PORT OF TACOMA**  
34 Minutes  
**EASY ACCESS**  
SR 7



# FOR LEASE

# 19700 38TH AVE E | SPANAWAY

THAD MALLORY, SIOR  
Executive Vice Chairman  
425-362-1410  
thad.mallory@nmrk.com

TAYLOR HOFF, SIOR  
Vice Chairman  
425-362-1388  
taylor.hoff@nmrk.com

MORGAN RICHEY, SIOR  
Managing Director  
425-362-1409  
morgan.richey@nmrk.com

The distributor of this communication is performing acts for which a real estate license is required. The information contained herein has been obtained from sources deemed reliable but has not been verified and no guarantee, warranty or representation, either express or implied, is made with respect to such information. Terms of sale or lease and availability are subject to change or withdrawal without notice.

## NEWMARK

