

RANCH ACRES MEDICAL/OFFICE FOR LEASE THE ELITE WELLNESS CENTER



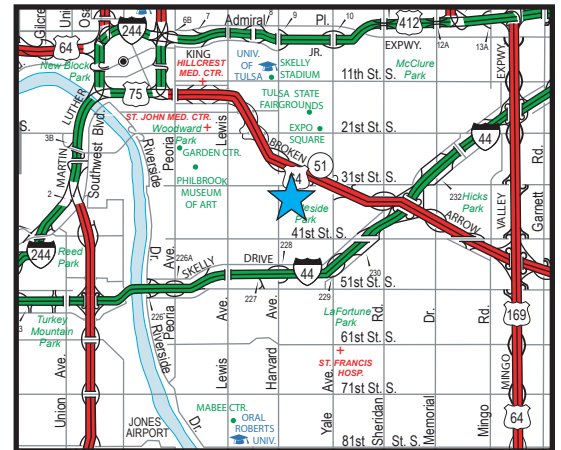
3336 EAST 32ND STREET, TULSA, OK
(32ND & HARVARD)

SIZES

- 900-3,750 RSF±
(see floor plan on back)

FEATURES

- Long-standing Midtown medical/office building
- 1st Floor Storefront Space
- 2nd Floor Office and Medical Space with furnished lobby/ waiting area
- On-site physician ownership
- Building internet services available
- Abundant parking spaces/covered carport spaces
- Zoned CS (Commercial Shopping)
- Self contained spaces with private restrooms
- ADA Restrooms available on 2nd Floor
- Flexible work environments, drive-up convenience
- Tenant directory/digital reader signs on 32nd & Jamestown
- Popular Midtown/Ranch Acres area of 31st & Harvard



The information contained herein is believed to be accurate but is not guaranteed as to accuracy and may change or be updated without notice.

Contact: Monty Berry, CCIM

Office (918) 280-9900 | Cell (918) 695-4162 | Fax (918) 280-9902
E-mail Monty@EquitasRealty.com

Aerial

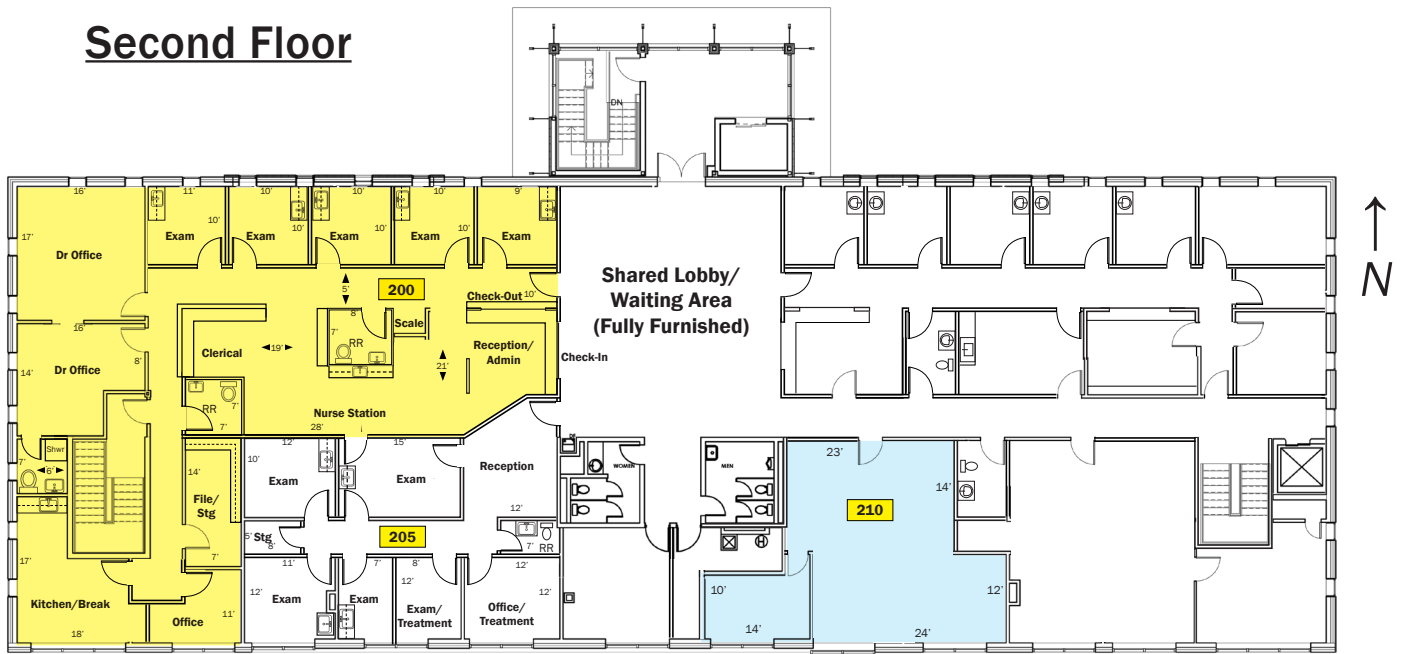


Front of Building



Back Parking/Carport

Second Floor

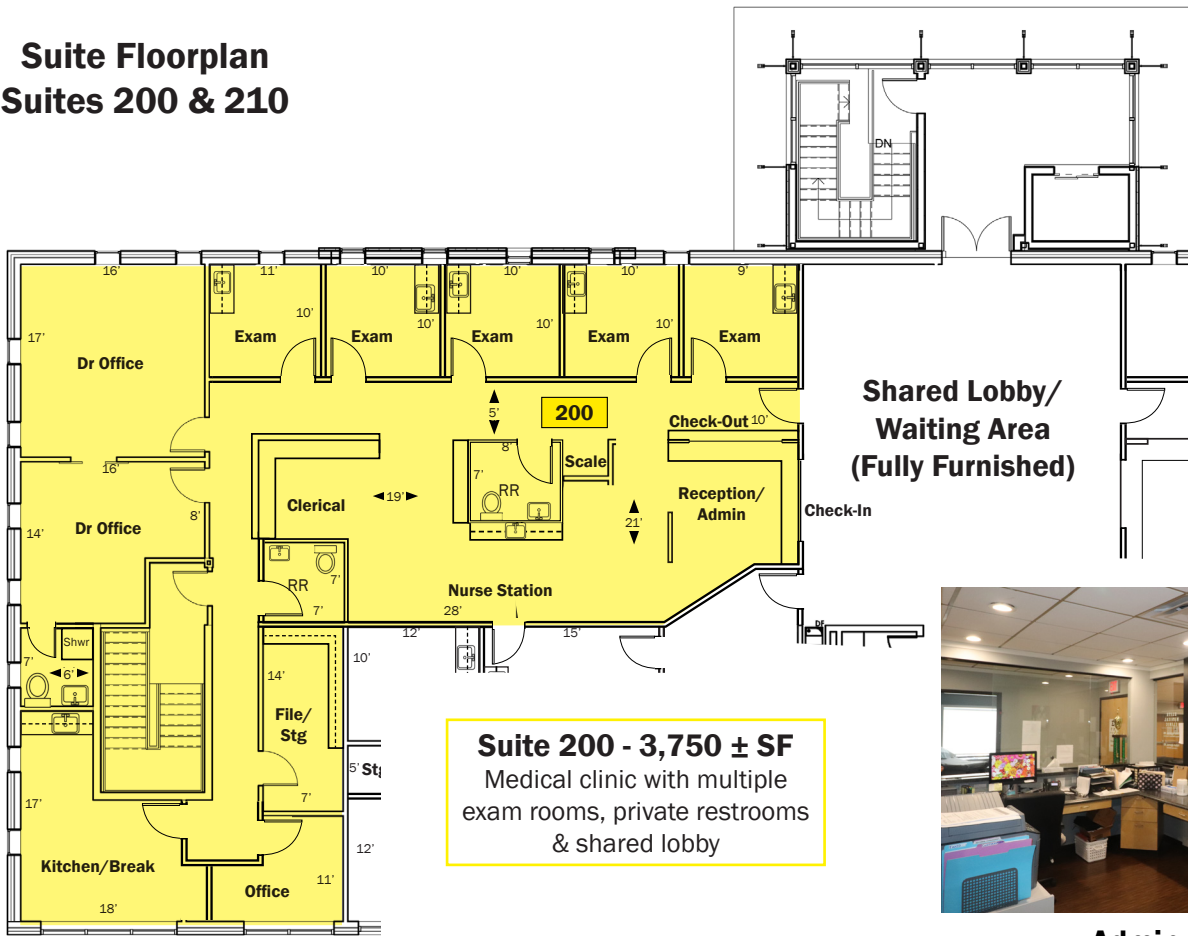


Suite 200 - 3,750 ± SF
Medical clinic with multiple exam rooms,
private restrooms & shared lobby

Suite 210 - 900 ± SF
Large lobby & Office



**Suite Floorplan
Suites 200 & 210**



Suite 200 - 3,750 ± SF
Medical clinic with multiple exam rooms, private restrooms & shared lobby



Admin Area



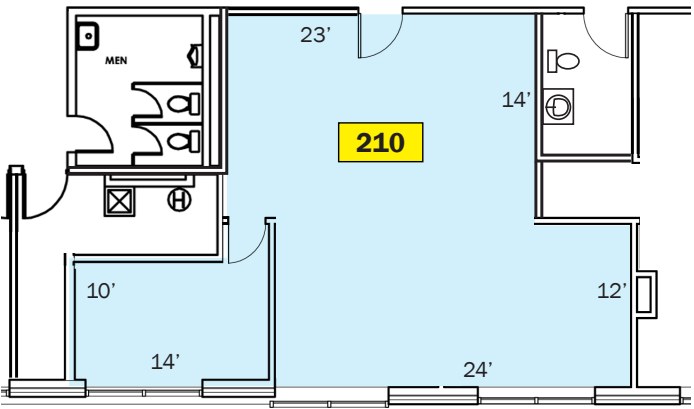
Exec Office



Clerical



Typical Exam



Suite 210 - 900 ± SF
Large lobby & Office