

19500 BULVERDE RD,
SAN ANTONIO, TX 78259



117,063 SF
AVAILABLE FOR LEASE

BRYAN SETHNEY
Managing Director
C: +1 210 467 8294
O: +1 210 305 4280
bryan.sethney@cushwake.com

MEREDITH MUECKE HOWARD
Director
C: +1 512 804 9116
O: +1 210 739 6232
meredith.howard@cushwake.com



PROPERTY HIGHLIGHTS



117,063 SF
Space Available



\$18.00 NNN
Rate



\$3.85 ESTIMATED
Opex



TWO-STORY VALUE
Office space for lease



5/1000
Parking



NUMEROUS STOREFRONT
Access points to the space



9' - 10'
Ceiling height, allowing for natural light to transcend the space



FLEXIBLE MODERN OPEN OFFICE CONCEPT
Allowing for optimal functionality

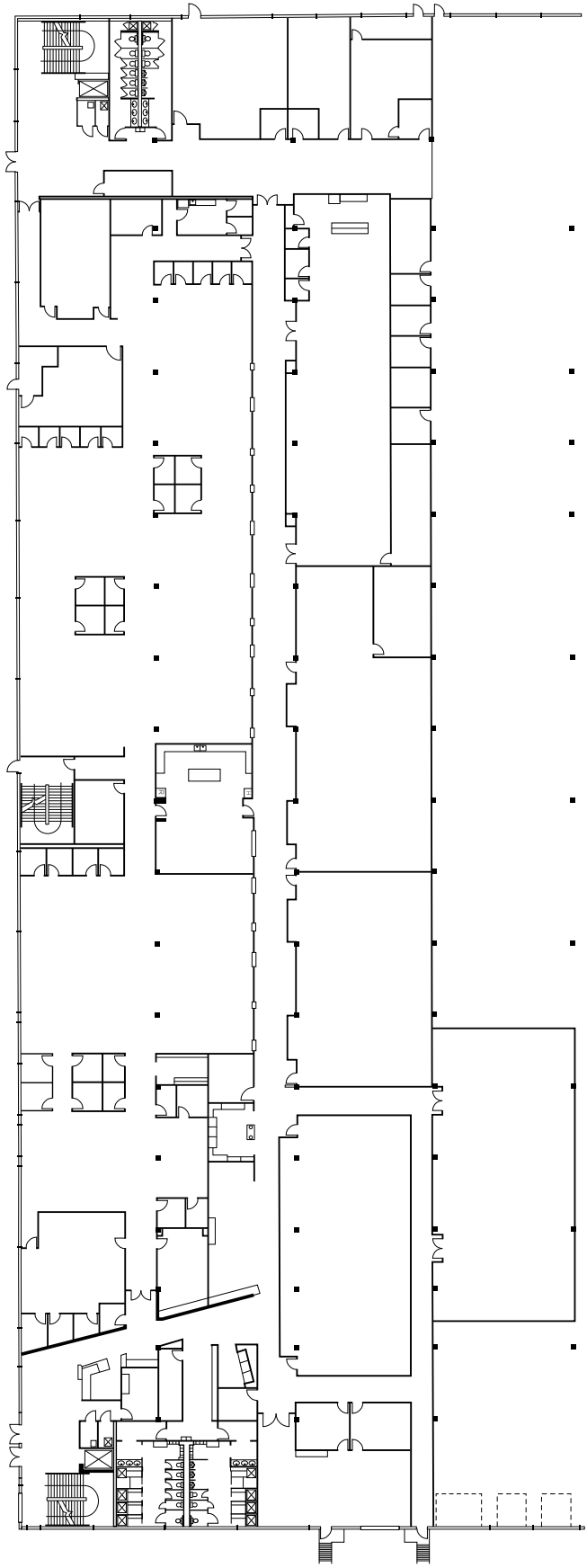
LOCATION:



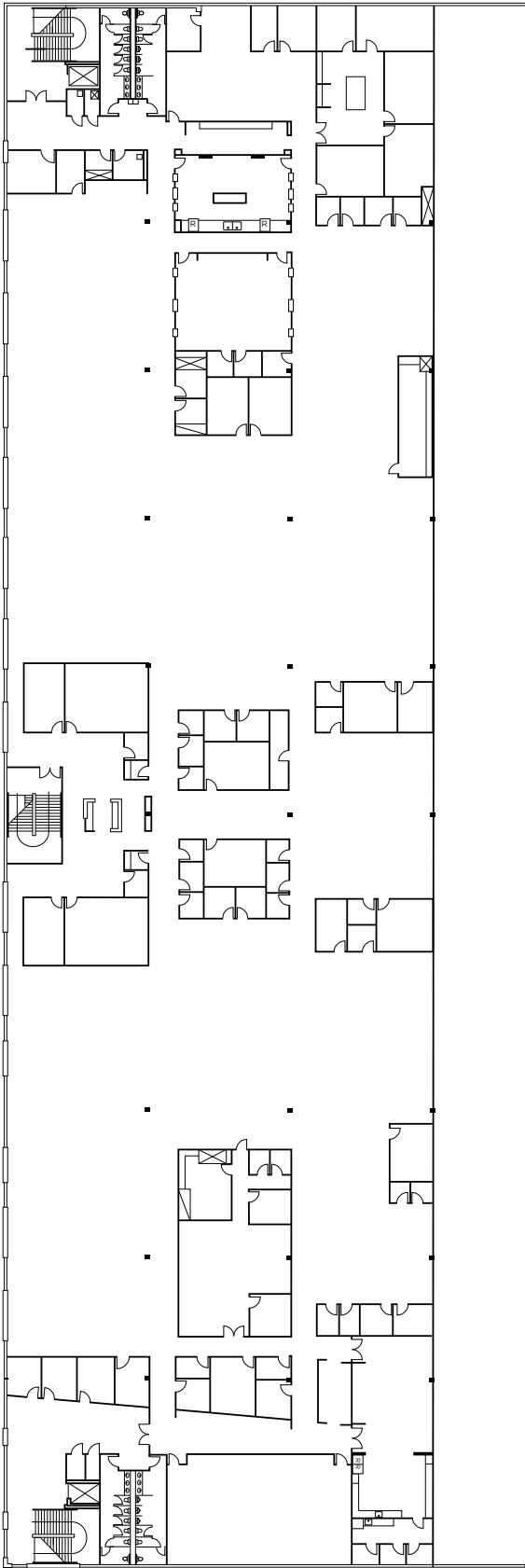
SITUATED ON BULVERDE ROAD
Near Loop 1604 in a high growth area



THE PROJECT IS STRATEGICALLY LOCATED WITH EASY INGRESS/EGRESS
To San Antonio's major roadways



2ND FLOOR



PRIME ACCESS

Hill Country Village



1604

Loop 1604 Retail



Yantis Family Ranch

One mile from Loop 1604

Bulverde Rd



Pearson



BAPTIST HEALTH SYSTEM

The Club at Sonterra

METHODIST STONE OAK HOSPITAL

Stone Oak

281

eog resources

DRIVE TIMES



14 MIN
AIRPORT

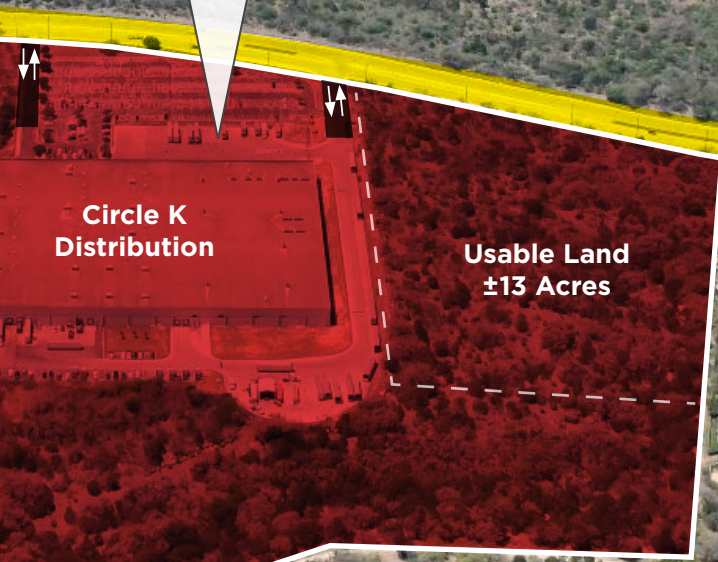


19 MIN
THE PEARL



23 MIN
DOWNTOWN

**19500 BULVERDE RD,
SAN ANTONIO, TX 78259**



Bulverde Rd

Canyon Pkwy

CORPORATE NEIGHBORS





19500 BULVERDE RD, SAN ANTONIO, TX 78259

FOR MORE INFORMATION, PLEASE CONTACT:

BRYAN SETHNEY

Managing Director

C: +1 210 467 8294

O: +1 210 305 4280

bryan.sethney@cushwake.com

MEREDITH MUECKE HOWARD

Director

C: +1 512 804 9116

O: +1 210 739 6232

meredith.howard@cushwake.com



**CUSHMAN &
WAKEFIELD**

©2025 Cushman & Wakefield. All rights reserved. The information contained in this communication is strictly confidential. This information has been obtained from sources believed to be reliable but has not been verified. No warranty or representation, express or implied, is made as to the condition of the property (or properties) referenced herein or as to the accuracy or completeness of the information contained herein, and same is submitted subject to errors, omissions, change of price, rental or other conditions, withdrawal without notice, and to any special listing conditions imposed by the property owner(s). Any projections, opinions or estimates are subject to uncertainty and do not signify current or future property performance.