

911

SEVENTH AVENUE

Between West 57th and West 58th Street

CENTRAL PARK

Central Park Boutique
Retail for Sale



COURT

IRG

ISA REALTY GROUP



911 SEVENTH AVENUE

Ground: Approx. 970 SF

Lower Level: Approx. 1,289 SF

Frontage: Approx. 18 ft.

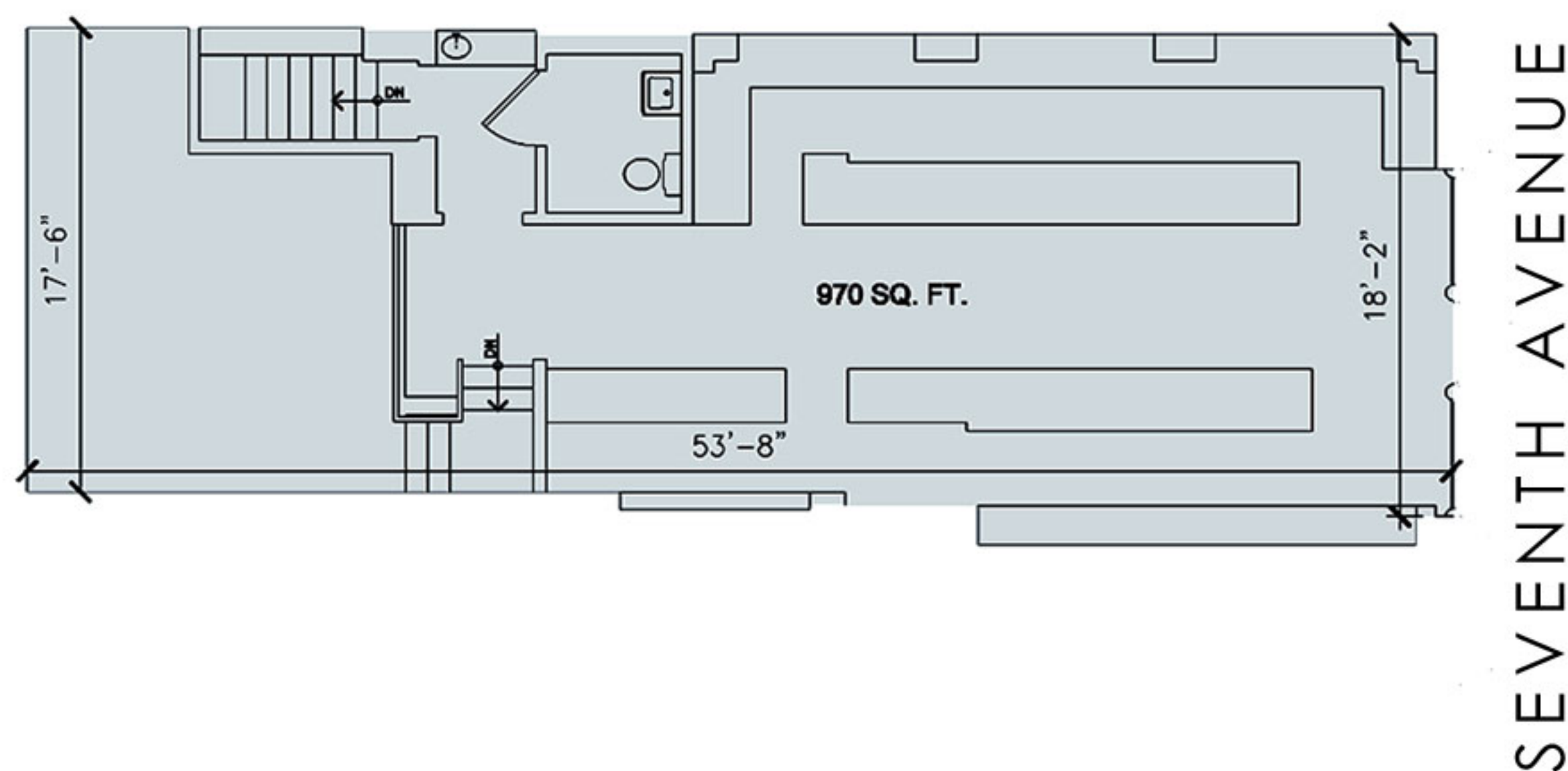
Price Upon Request

Space Features:

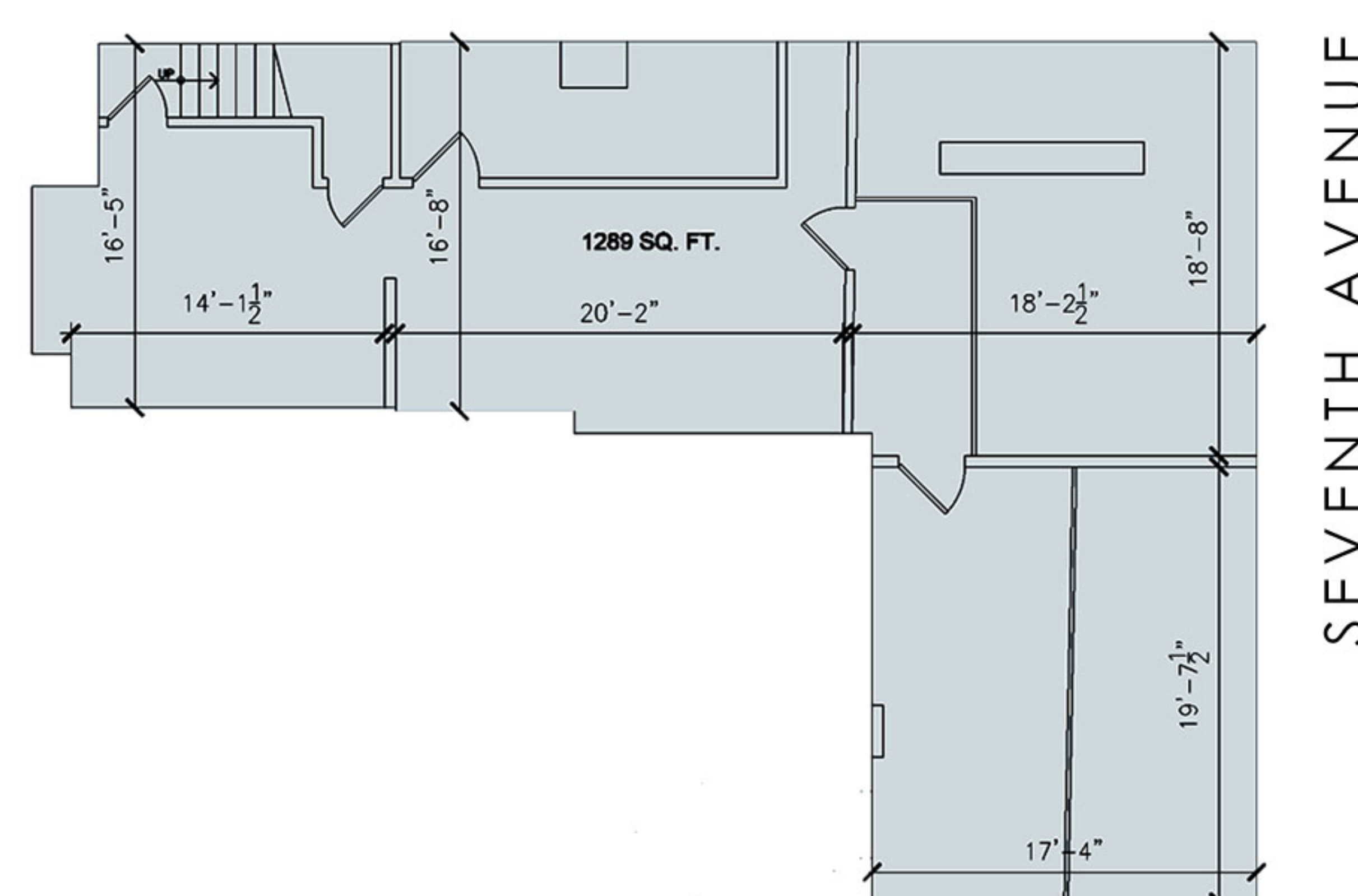
- Opportunity to own your retail space
- Retail at the base of the landmark Alwyn Court
- High foot & vehicular traffic location close to Columbus Circle and Central Park
- Surrounded by iconic landmarks, top-tier office buildings, and luxury shopping destinations



GROUND FLOOR



BASEMENT



DEMOGRAPHIC - MIDTOWN WEST

Daytime Population: 668,000
 Number of Residents: 52,000
 Number of Households: 30,000
 Hotel Rooms within 5 blocks: 6,000+
 Total Subway Ridership: 23 Million/yr
 Retail Expenditure: \$2.4 Billion/yr
 Central Park Visitors: 42 Million/yr
 Surrounding Office Space: 28 Mil Sq Ft



Neighbors:

Central Park, Carnegie Hall, Nordstrom, Marea, Jean-Georges, Columbus Circle, Brasserie Cognac, Park Hyatt, The Russian Tea Room, Billionaires Row

Isa Realty Group, LLC makes no warranty, expressed or implied, as to the accuracy or completeness of this communication and any attachment. This communication may contain errors and omissions. Nothing herein is binding on any party.

JOSEPH ISA 212.689.1645
joseph.isa@isarealtygroup.com

LOUIS FRANCO 212.689.1646
louis.franco@isarealtygroup.com