

**FOR SALE** | INDUSTRIAL CONDO  
OWNER USER OPPORTUNITY  
TWO SUITES TOTALING 4,920 SF

# HOLGATE SQUARE

1762 AIRPORT WAY S  
SEATTLE, WASHINGTON

**2,460 - 4,920 SF AVAILABLE**  
**\$1,476,000 - \$2,880,000**



**NEWMARK**

**MORGAN RICHEY, SIOR**  
Managing Director  
425.362.1409  
morgan.richey@nmrk.com

**EVAN LUGAR**  
Senior Managing Director  
425.362.1403  
evan.lugar@nmrk.com

**FOR SALE** | INDUSTRIAL CONDO  
OWNER USER OPPORTUNITY  
TWO SUITES TOTALING 4,920 SF

# HOLGATE SQUARE

1762 AIRPORT WAY S | SEATTLE, WASHINGTON

## BUILDING DETAILS

- Total Available : 2,460 - 4,920 SF
- Two-Story Flex
- Clear Height : 20'
- Loading : Grade Level Doors
- Available individually as condos
- Available combined as standalone tax parcel
- Two (2) dedicated parking spaces each



**NEWMARK**

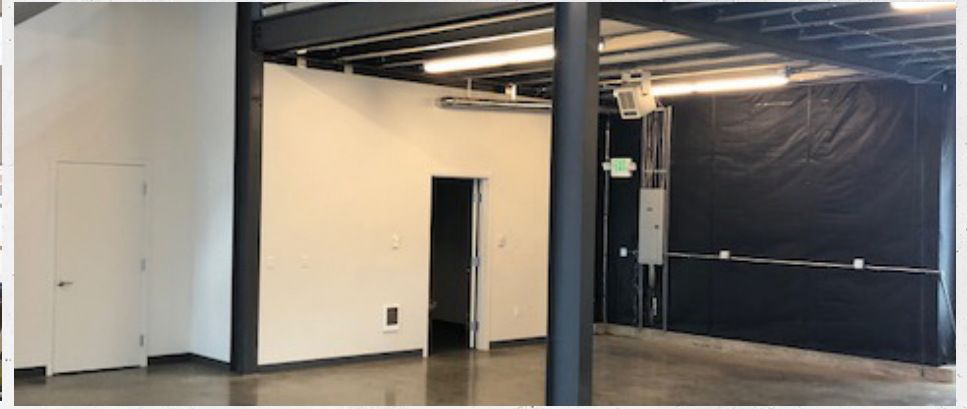
**MORGAN RICHEY, SIOR**  
Managing Director  
425.362.1409  
morgan.richey@nrmk.com

**EVAN LUGAR**  
Senior Managing Director  
425.362.1403  
evan.lugar@nrmk.com

**FOR SALE** | INDUSTRIAL CONDO  
OWNER USER OPPORTUNITY  
TWO SUITES TOTALING 4,920 SF

# HOLGATE SQUARE

## PHOTOS & RENDERINGS



**NEWMARK**

**MORGAN RICHEY, SIOR**  
Managing Director  
425.362.1409  
morgan.richey@nmrk.com

**EVAN LUGAR**  
Senior Managing Director  
425.362.1403  
evan.lugar@nmrk.com

**FOR SALE** | INDUSTRIAL CONDO  
OWNER USER OPPORTUNITY  
TWO SUITES TOTALING 4,920 SF

# HOLGATE SQUARE

## BUILDING HIGHLIGHTS

- Prime opportunity to own a compact commercial space in South Seattle.
- Situated along Airport Way S, just minutes from Seattle's CBD and bustling South Seattle markets.
- Direct access to I-5, I-90, and the West Seattle Bridge enhances connectivity.
- The space's layout, location, and accessibility support a wide range of potential uses.



**NEWMARK**

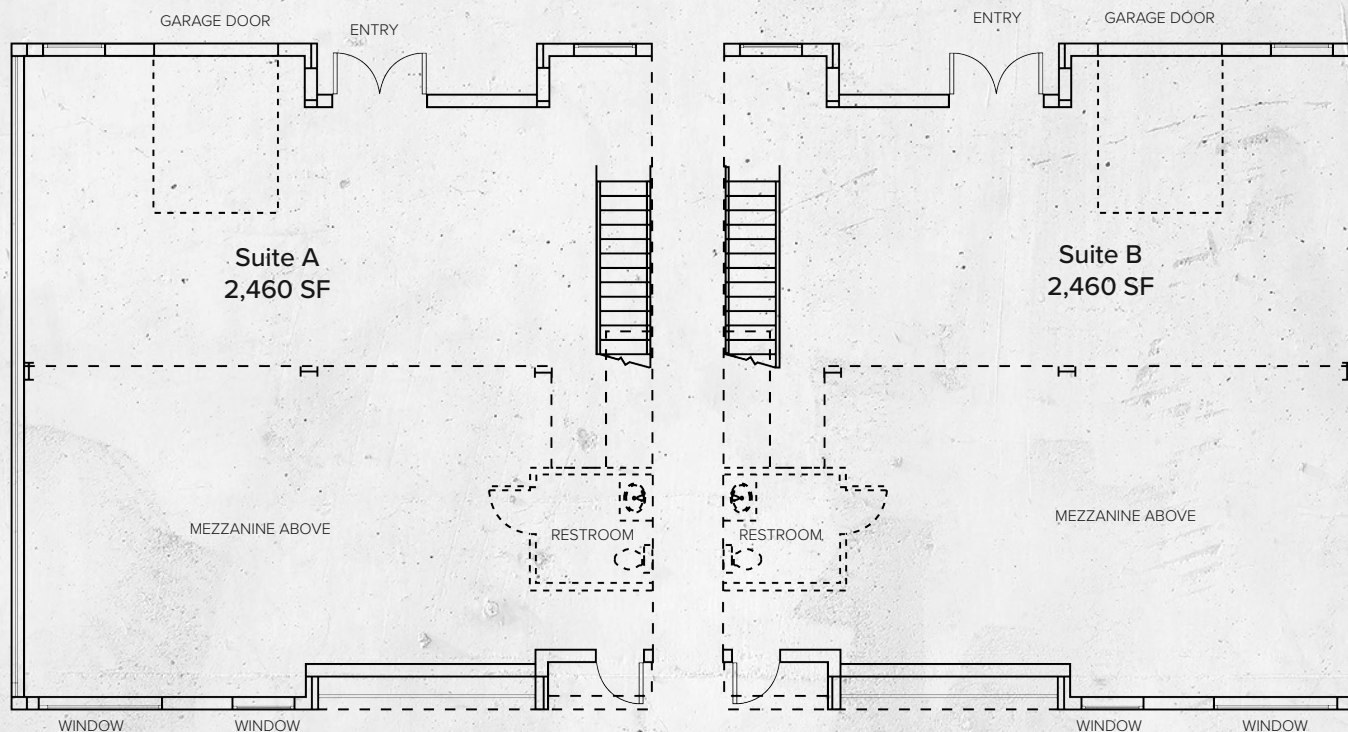
**MORGAN RICHEY, SIOR**  
Managing Director  
425.362.1409  
morgan.richey@nmrk.com

**EVAN LUGAR**  
Senior Managing Director  
425.362.1403  
evan.lugar@nmrk.com

**FOR SALE** | INDUSTRIAL CONDO  
OWNER USER OPPORTUNITY  
TWO SUITES TOTALING 4,920 SF

# HOLGATE SQUARE

## FLOOR PLAN



\* Suites can be sold together or separate

**NEWMARK**

**MORGAN RICHEY, SIOR**  
Managing Director  
425.362.1409  
morgan.richey@nmrk.com

**EVAN LUGAR**  
Senior Managing Director  
425.362.1403  
evan.lugar@nmrk.com

**FOR SALE** | INDUSTRIAL CONDO  
OWNER USER OPPORTUNITY  
TWO SUITES TOTALING 4,920 SF

# HOLGATE SQUARE



**NEWMARK**

**MORGAN RICHEY, SIOR**  
Managing Director  
425.362.1409  
[morgan.richey@nmrk.com](mailto:morgan.richey@nmrk.com)

**EVAN LUGAR**  
Senior Managing Director  
425.362.1403  
[evan.lugar@nmrk.com](mailto:evan.lugar@nmrk.com)

# HOLGATE SQUARE

1762 AIRPORT WAY S | SEATTLE, WASHINGTON

**MORGAN RICHEY, SIOR**  
Managing Director  
425.362.1409  
morgan.richey@nrmk.com

**EVAN LUGAR**  
Senior Managing Director  
425.362.1403  
evan.lugar@nrmk.com

**NEWMARK**