



# 1499 W 121st Avenue

**1499 W 121ST AVENUE  
WESTMINSTER, CO**

## Space Available

40,000 SF divisible to 10,000 SF

## Lease Rate

\$26.00/SF FSG

## Building Details

Lease Rate: \$26.00/SF FSG

Building Size: 58,033 SF

Elevators: Two

Terms: 3 to 5 years

Parking: Ratio of 3.8:1,000 SF

## Office for Lease

### Property Highlights

- Premier location at I-25 and 120th Avenue
- Provides for convenient access to Downtown Denver, Denver International Airport, Boulder and the Northern Front Range
- Close proximity to numerous restaurants, retail amenities and hotels
- Panoramic views
- Abundant surface parking
- Fiber available
- Professional management

*For information, please contact:*

### Roger Simpson

t 303-260-4366

roger.simpson@nrmk.com

1800 Larimer Street,  
Suite 1700,  
Denver, CO 80202

[nrmk.com](http://nrmk.com)

**NEWMARK**

The information contained herein has been obtained from sources deemed reliable but has not been verified and no guarantee, warranty or representation, either express or implied, is made with respect to such information. Terms of sale or lease and availability are subject to change or withdrawal without notice.

## 1499 W. 121ST AVENUE

### Space Available

Suite 200: 20,000 SF

Suite 300: 20,000 SF

### Lease Rate

\$26.00/SF FSG

### Building Details

Lease Rate: \$26.00/SF FSG

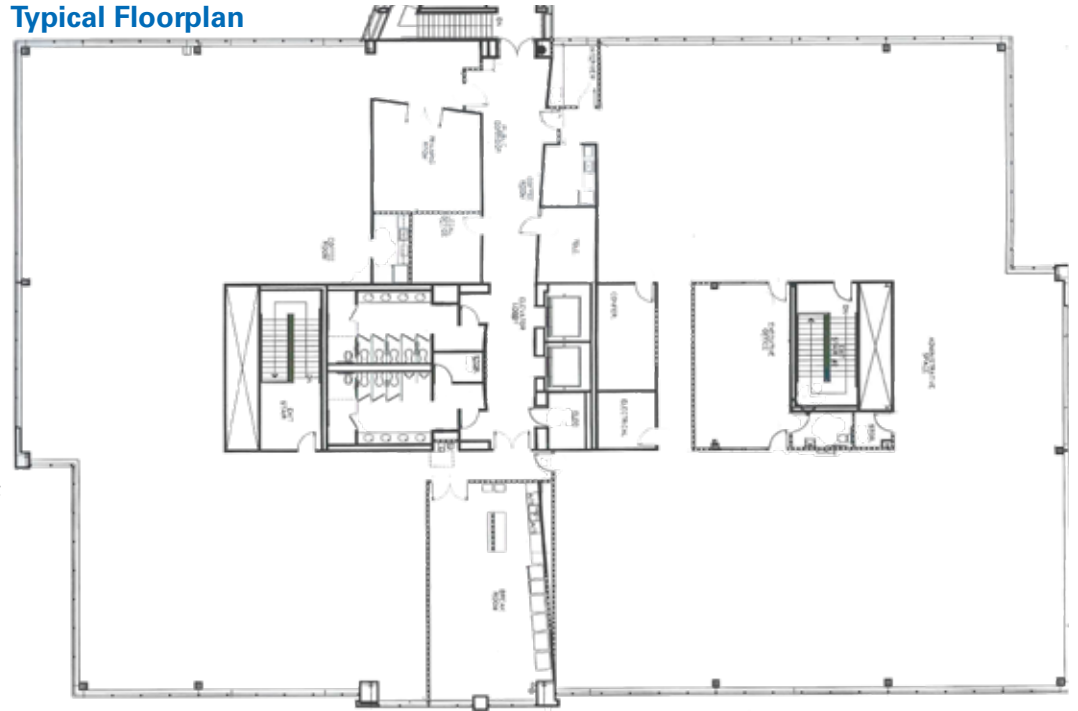
Building Size: 58,033 SF

Elevators: Two

Terms: 3 to 5 years

Parking: Ratio of 3.8:1,000 SF

### Typical Floorplan



MAD Greens  
Chilis Grill & Bar  
FedEx  
Cracker Barrel  
Starbucks  
Perkins  
Wendy's  
Sushi

Panera Bread  
Bad Daddys Burger Bar  
Starbucks  
Burger King  
McDonalds  
Tequila's Restaurant  
Outback  
Anytime Fitness  
Safeway  
Post Office  
Floyd's 99 Barbershop

Target  
Barnes & Noble  
Michaels  
Sprouts  
Dollar Tree  
Panda Express  
Krispy Kreme  
Olive Garden  
Chick-Fil-A  
Coldstone  
TGI Fridays

### CONTACT

#### Roger Simpson

t 303-260-4366

roger.simpson@nrmk.com

[nrmk.com](http://nrmk.com)

# NEWMARK