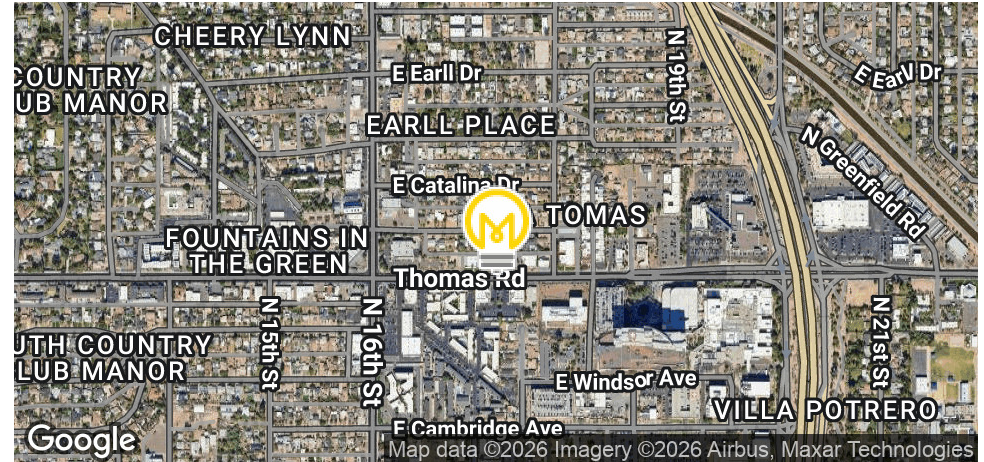


For Lease | Medical/Dental Opportunity

1701 E Thomas Rd, Ste 204 & 205, Phoenix, AZ 85016

Executive Summary



BUILDING DETAILS:

Building Size:	6,465 SF
Available Suite Size:	2,522 SF
Parking Ratio:	5.00/1,000 SF
Elevators:	1
Year Built:	2004
Building Stories	2
Zoning:	R-5/RI, Phoenix

PROPERTY OVERVIEW

Discover the perfect space for your medical or dental office at 1701 E Thomas Rd in Phoenix, AZ. This modern property offers a highly visible location on E Thomas Rd, right next to a large pediatric dentist. Boasting a sleek and attractive exterior, the building provides approximately 2,522 SF of versatile space for lease. With ample parking for clients and staff, this property is designed to accommodate your medical practice's needs. Contact the broker for pricing and don't miss out on this excellent leasing opportunity. Elevate your dental practice with this prominent and contemporary commercial space.

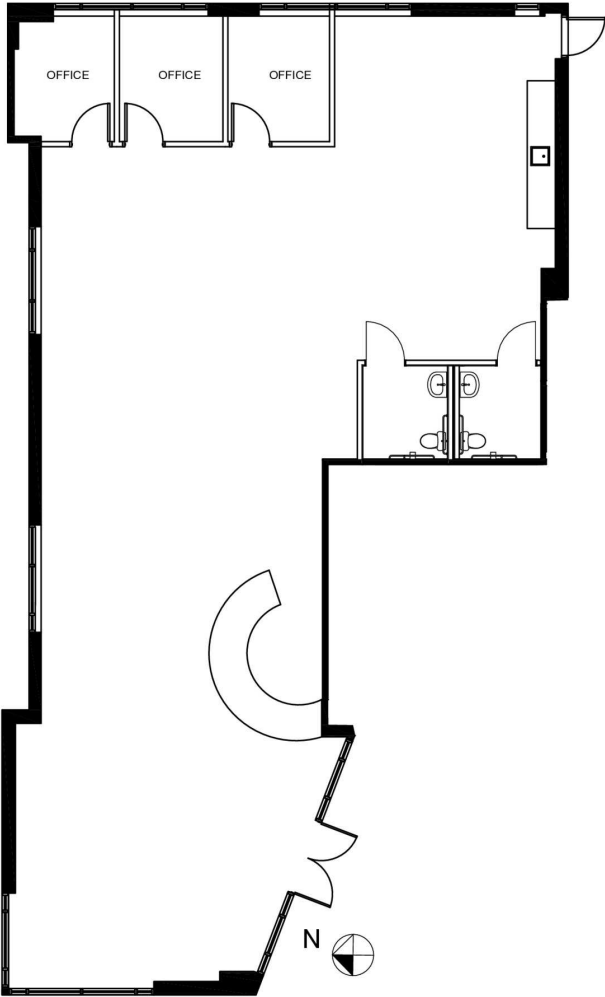
PROPERTY HIGHLIGHTS

- Contact Broker for Pricing
- For Lease
- +/- 2,522 SF
- High visibility on E Thomas Rd
- Modern and attractive exterior
- Ample parking for clients and staff

1701 E Thomas Rd

Phoenix, AZ 85016

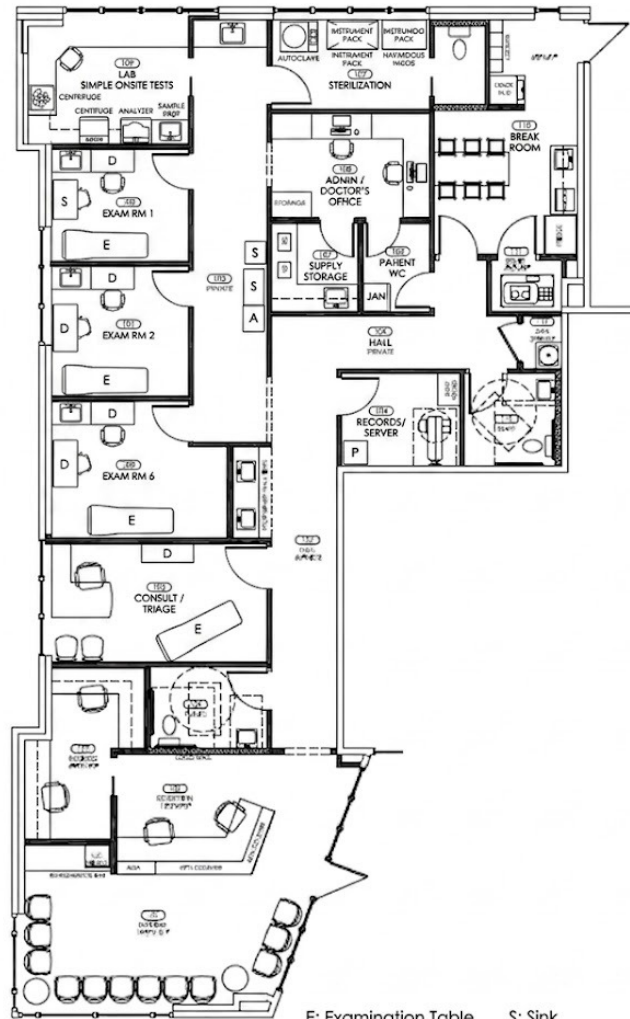
Floor Plan



For Lease | Medical/Dental Opportunity

1701 E Thomas Rd, Suite 204 & 205, Phoenix, AZ 85016

Conceptual Plan



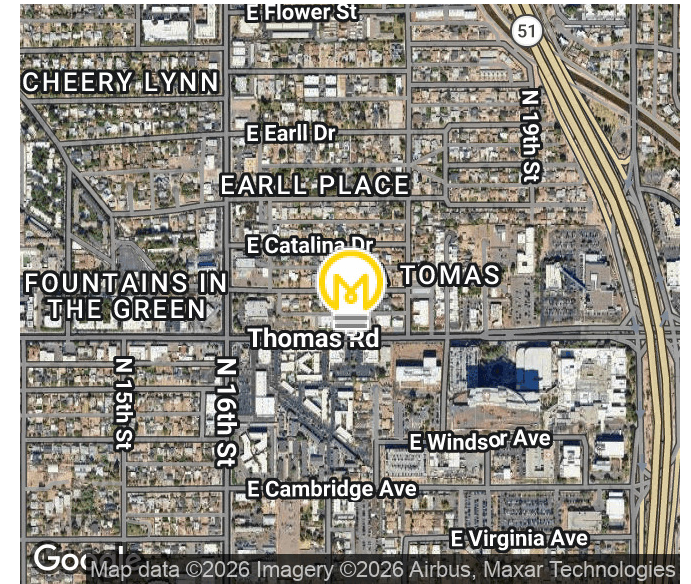
PROPOSED FLOOR PLAN
NOT TO SCALE

E: Examination Table S: Sink
D: Doctor/Admin Desk A: Autoclave
P: Photocopier (in Records)

For Lease | Medical/Dental Opportunity

1701 E Thomas Rd, Suite 204 & 205. Phoenix, AZ 85016

Site Details



DEMOGRAPHICS	0.3 Miles	0.5 Miles	1 Mile
Total Households:	658	1,584	7,417
Total Population:	1,374	3,564	17,752
Average HH Income:	\$58,467	\$68,461	\$85,527

1701 E Thomas Rd

Phoenix, AZ 85016

Additional Photos

