

Tri-Cities Medical Center



969 Stevens Drive Richland, WA 99352

- SUITE: 1C
- RSF: 1,194 +/-
- RATE: \$21.50
- TERM/LEASE: 3-5 YR
- NNN



Located just off George Washington Way and near the scenic Columbia River, Tri-City Medical Center is conveniently situated directly across from Kadlec Medical Center. The building is also positioned next to an orthopedic surgeon, radiologist, practitioner, and more! This building offers exceptional proximity in a prominent medical hub. It is also in close access to an array of restaurants, fast-food chains, and outdoor activities.

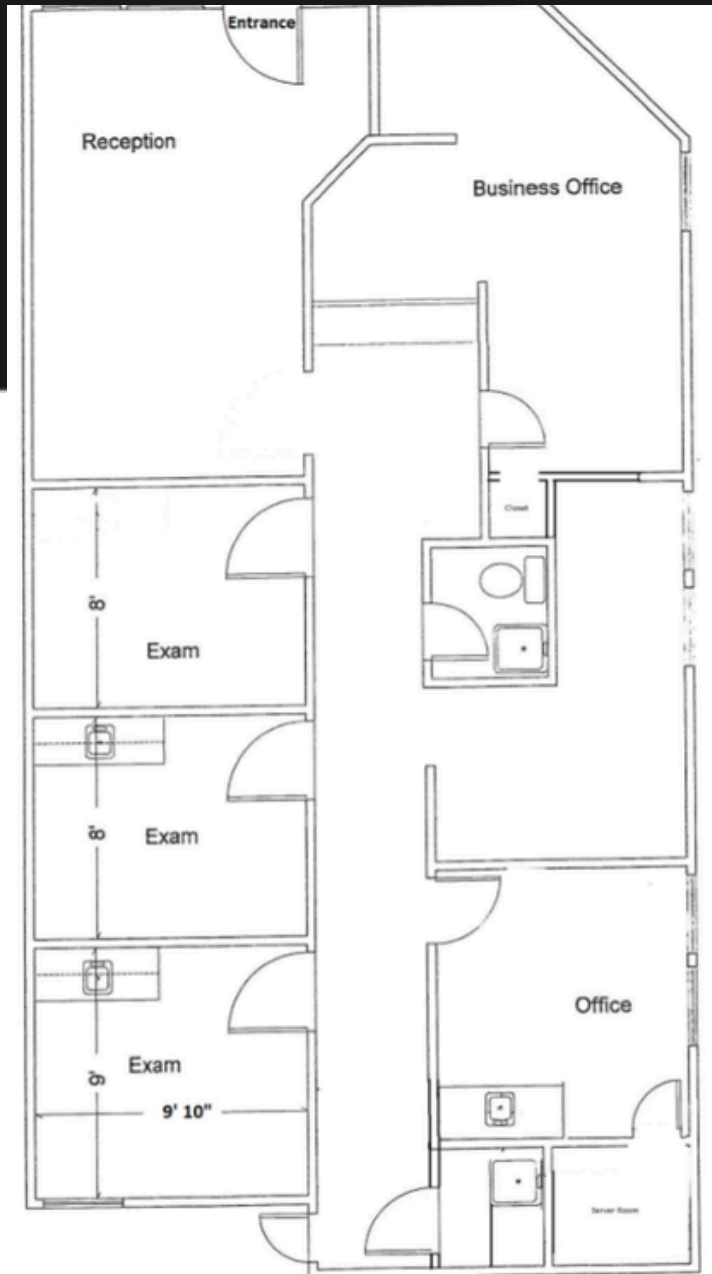
Suite 1C is a first-floor medical office space featuring three exam rooms, welcoming reception area, dedicated lab space, private office, and a business office. It is a versatile space offering functionality and convenience, perfect for a variety of medical and professional uses!



HARLEY HUSTON
COMMERCIAL BROKER
509-619-7347 MOBILE
509-735-0161 COMMERCIAL LEASING
HHUSTON@CROWNPROPERTYMANAGEMENT.COM

OLIVIA KELLY
COMMERCIAL BROKERAGE ASSISTANT
509-957-2900 MOBILE
509-735-0161 COMMERCIAL LEASING
OKELLY@CROWNPROPERTYMANAGEMENT.COM

FOR LEASE: Suite 1C 969 Stevens Drive Richland, WA 99352



Please note: Plan is intended to provide a representation for layout. Actual dimensions may vary as this document is not 100% to scale.

Disclaimer: The material contained herein is furnished solely for the purpose of considering the Leasing of the Property. Neither Crown Property Management nor the Owner make any representation or warranty, express or implied as to the accuracy or completeness of the information contained herein. The information contained herein is subject to change without notice and the recipient of these materials are advised and encouraged to conduct their own comprehensive review and analysis of the Property. The Owner expressly reserves the right, at it's sole discretion, to reject any or all expressions of interest to Lease the Property and to terminate negotiations with any entity, for any reason, at any time with or without notice.



CROWN PROPERTY MANAGEMENT
552 N. COLORADO ST. STE. 101
KENNEWICK, WA 99336
509-619-7347 OFFICE
CROWNCOMMERCIALREALESTATE.COM

HARLEY HUSTON
COMMERCIAL BROKER
509-619-7347 MOBILE
509-735-0161 COMMERCIAL LEASING
HHUSTON@CROWNPROPERTYMANAGEMENT.COM