

543 YONGE

CBRE

SUITE 300 | 12,783 SF

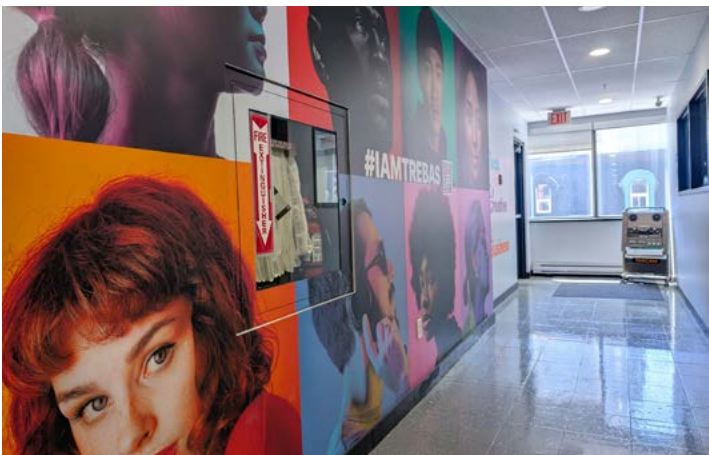
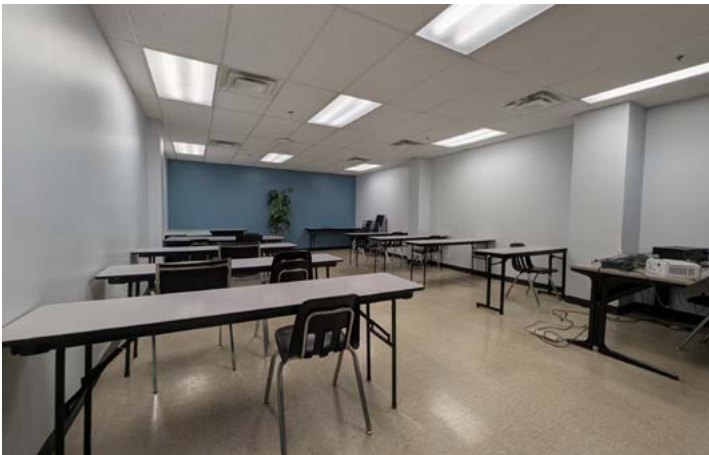
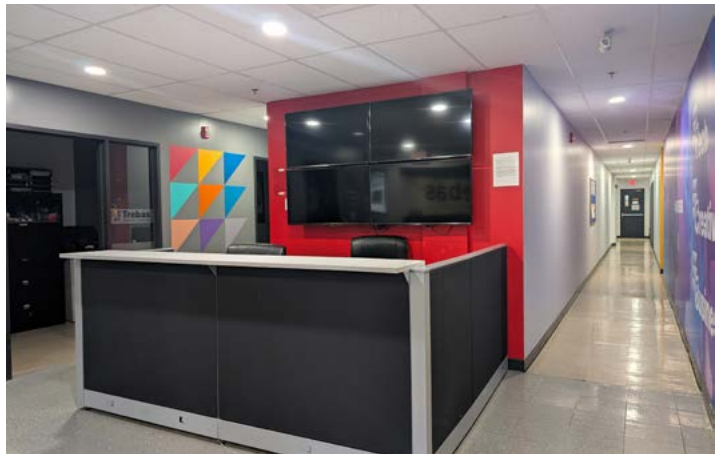
EDUCATION SPACE FOR SUBLEASE



MATTHEW OLEJNIK*
Senior Vice President
Matthew.Olejnik@cbre.com
+1 416 460 4224

NEDA KOLJUSKOV
Sales Representative
Neda.Koljuskov@cbre.com
+1 647 402 3223

*Sales Representative



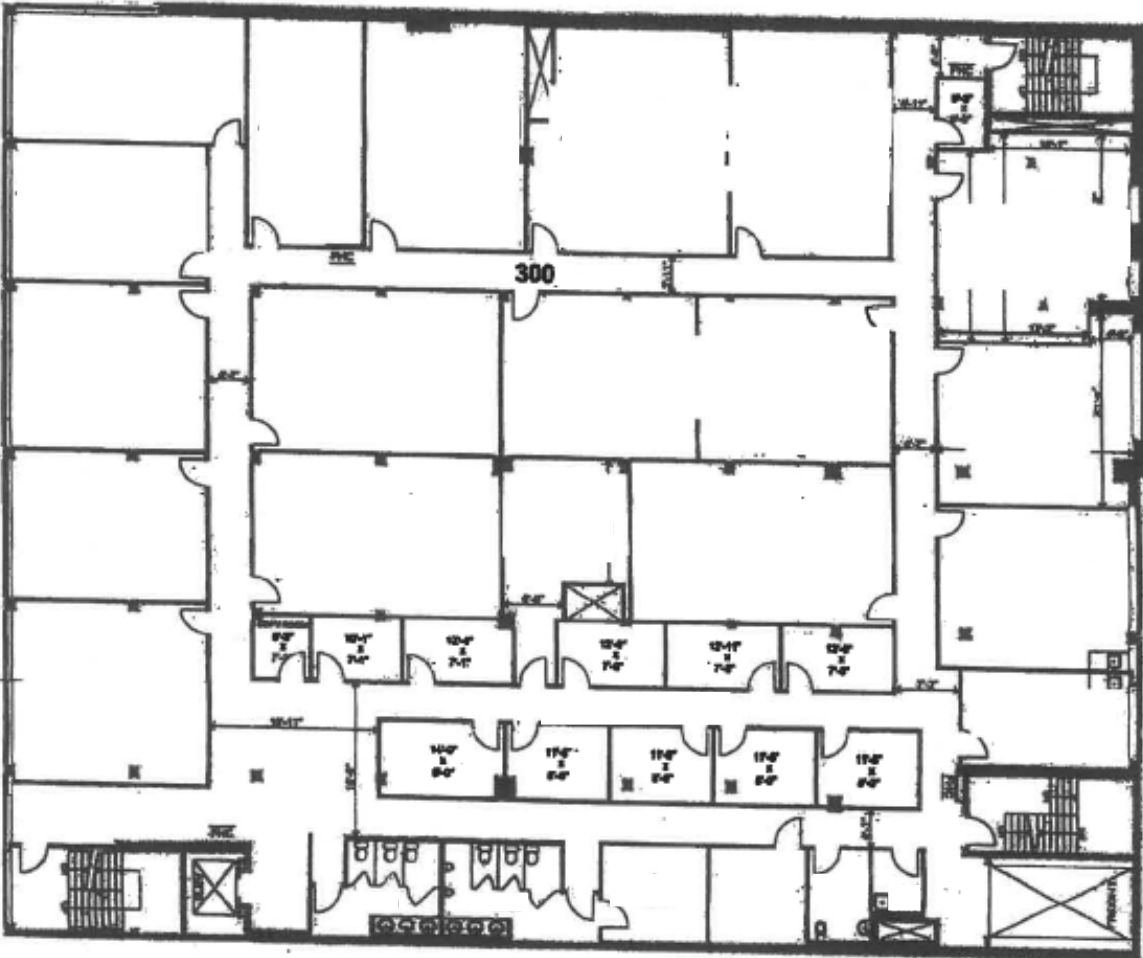
SUITE 300

AVAILABILITY

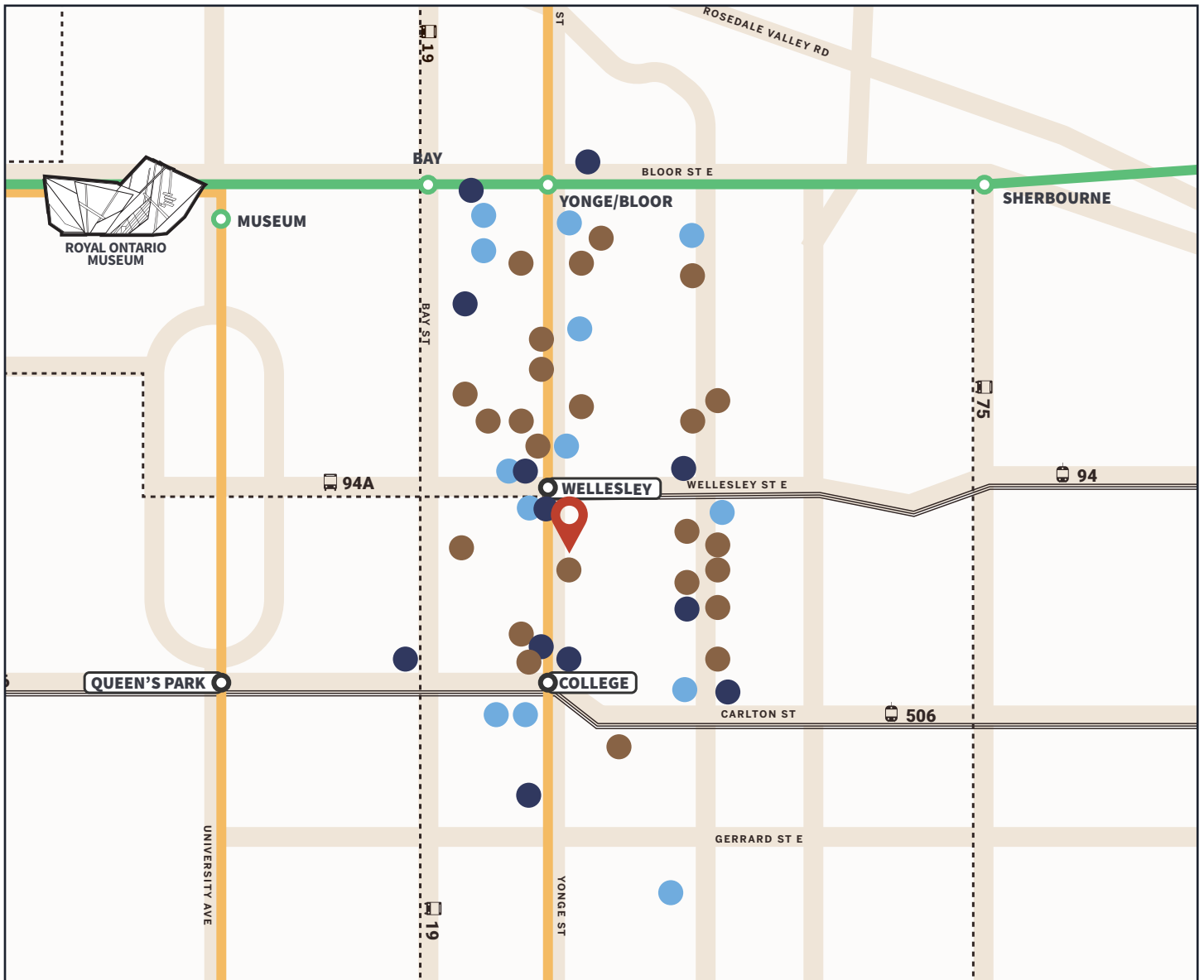
Size	12,783 SF	Term	August 30, 2028
Net Rent	Contact Listing Agent	Occupancy	Immediate
Additional Rent	\$19.78 PSF (2025 est.)		

BUILDING HIGHLIGHTS

- Fully built out education and classroom space
- Furniture available
- 1-Minute walk to Wellesley Subway Station




TRANSIT & AMENITIES




LEGEND

- Restaurants/Cafe/Bars
- Shops/Grocery
- Banks
- Bloor-Danforth Line
- Yonge-University Line
- TTC Streetcar Line




100

Walk Score



96

Bike Score



95

Transit Score

This disclaimer shall apply to CBRE Limited, Real Estate Brokerage, and to all other divisions of the Corporation; to include all employees and independent contractors ("CBRE"). All references to CBRE Limited herein shall be deemed to include CBRE, Inc. The information set out herein, including, without limitation, any projections, images, opinions, assumptions and estimates obtained from third parties (the "Information") has not been verified by CBRE, and CBRE does not represent, warrant or guarantee the accuracy, correctness and completeness of the Information. CBRE does not accept or assume any responsibility or liability, direct or consequential, for the Information or the recipient's reliance upon the Information. The recipient of the Information should take such steps as the recipient may deem necessary to verify the Information prior to placing any reliance upon the Information. The Information may change and any property described in the Information may be withdrawn from the market at any time without notice or obligation to the recipient from CBRE. CBRE and the CBRE logo are the service marks of CBRE Limited and/or its affiliated or related companies in other countries. All other marks displayed on this document are the property of their respective owners. All Rights Reserved.