

PACIFIC BUSINESS PARK - BLDG E

FOR LEASE: 14,984 SF

8725 S 212TH ST (SUITE 8735 & 8733) | KENT, WA 98032

HIGH QUALITY INDUSTRIAL SPACE IN THE HEART OF THE KENT VALLEY



LEASE INFORMATION

Unit	Total Size	Office Size	Loading	Lease Rate	Available
8733	11,700 SF	948 SF	7DH	Call Broker	1/1/2027
8735	3,284 SF	1,530 SF	1 GL (Oversized)	Call Broker	1/1/2027
8733/8735	14,984 SF	2,478 SF	7DH & 1 GL (Oversized)	Call Broker	1/1/2027

PROPERTY FEATURES

- Building signage available
- Immediate freeway access
- Centrally located
- 5 minutes from I-405
- 10 minutes to I-5
- Population of 274,147 within a 5-mile radius



KERMIT JORGENSEN
206.787.1469
kjorgensen@neilwalter.com

FLETCHER FARRAR
206.787.1469
ffarrar@neilwalter.com

SPENCER MEAD
206.787.1467
smead@neilwalter.com

All information references in this document are approximate. The information contained herein is contained from sources deemed reliable. It is provided without representation, warranty, or guarantee, expressed or implied as to accuracy. Prospective buyer or tenant should conduct its own independent investigation relating to the property, government codes and regulations, allowed uses, and all other matters, regardless of whether they are referred to or contained in this document.

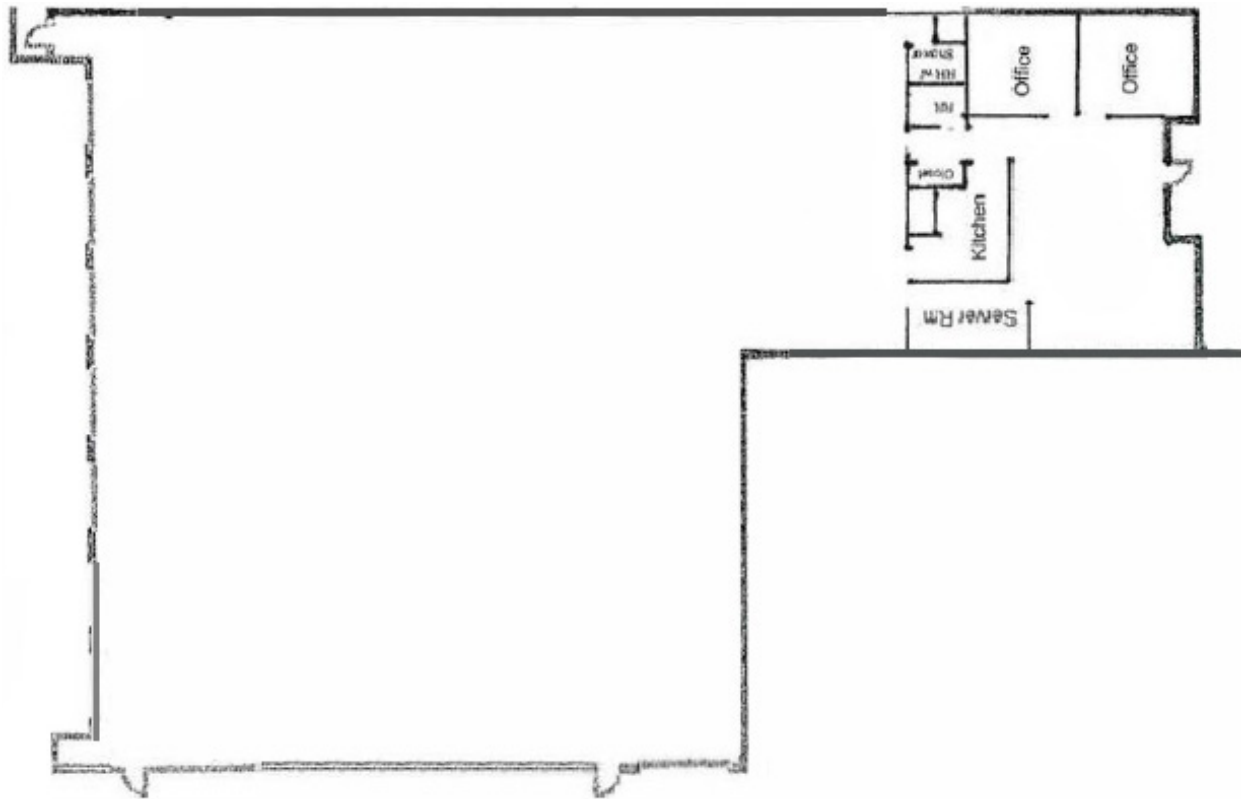
PACIFIC BUSINESS PARK - BLDG E

8725 S 212TH ST (SUITE 8735 & 8733) | KENT, WA 98032



Unit	Total Size:	Office Size	Loading	Lease Rate	Available
8733	11,700 SF	948 SF	7 DH	Call Broker	1/1/2027

Unit 8733 & 8735 can be leased together for a total of 14,984 SF



KERMIT JORGENSEN
206.787.1469
kjorgensen@neilwalter.com

FLETCHER FARRAR
206.787.1469
ffarrar@neilwalter.com

SPENCER MEAD
206.787.1476
smead@neilwalter.com

550 S Michigan St
Seattle, WA 98108
206.787.1800
www.neilwalter.com

PACIFIC BUSINESS PARK - BLDG E

8725 S 212TH ST (SUITE 8735 & 8733) | KENT, WA 98032



Unit	Total Size:	Office Size	Loading	Lease Rate	Available
8735	3,284 SF	1,530 SF	1 GL (Oversized)	Call Broker	1/1/2027

Unit 8733 & 8735 can be leased together for a total of 14,984 SF



KERMIT JORGENSEN
206.787.1469
kjorgensen@neilwalter.com

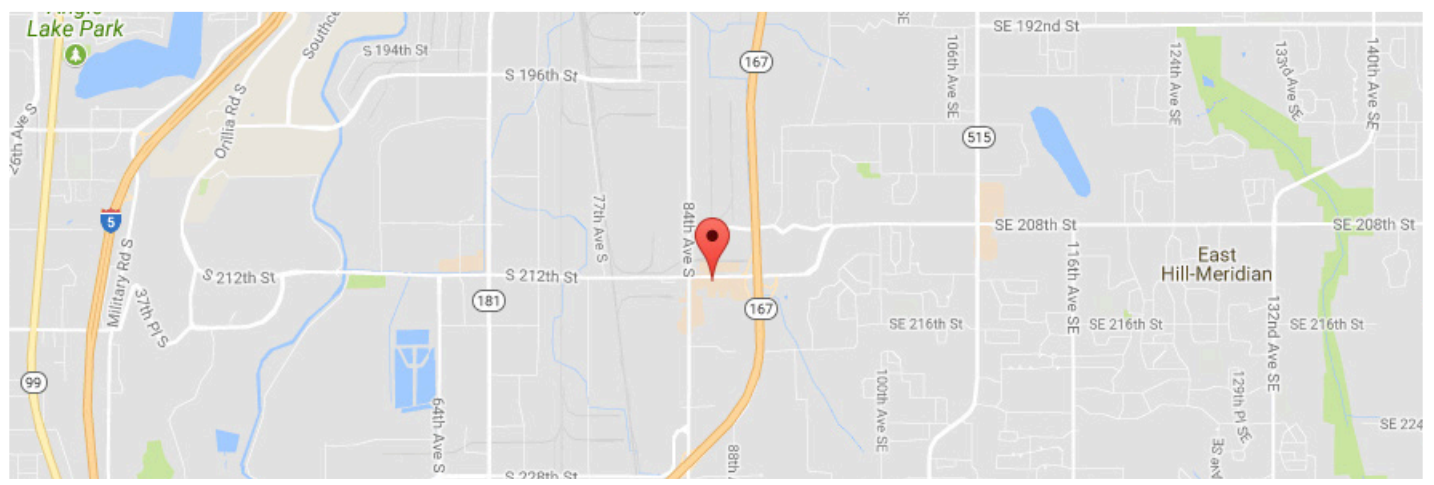
FLETCHER FARRAR
206.787.1469
ffarrar@neilwalter.com

SPENCER MEAD
206.787.1476
smead@neilwalter.com

550 S Michigan St
Seattle, WA 98108
206.787.1800
www.neilwalter.com

PACIFIC BUSINESS PARK

BUILDING E | 8725 S 212TH ST | KENT, WA 98032



KERMIT JORGENSEN
206.787.1469
kjorgensen@neilwalter.com

FLETCHER FARRAR
206.787.1469
ffarrar@neilwalter.com

SPENCER MEAD
206.787.1476
smead@neilwalter.com

550 S Michigan St
Seattle, WA 98108
206.787.1800
www.neilwalter.com

All information references in this document are approximate. The information contained herein is contained from sources deemed reliable. It is provided without representation, warranty, or guarantee, expressed or implied as to accuracy. Prospective buyer or tenant should conduct its own independent investigation relating to the property, government codes and regulations, allowed uses, and all other matters, regardless of whether they are referred to or contained in this document.