



**1801 BASSETT
ST**

***1801 Bassett St
Lansing, MI 48915***

SALE

Discover the potential of 48,000 square feet of heavy industrial space, strategically located in the heart of Lansing. This expansive property is conveniently situated in close proximity to Capital Region International Airport with quick access to I-49, I-69 and US-127, making it an ideal hub for businesses requiring frequent air travel or cargo shipments.

The property boasts a large fenced yard, providing ample space for storage or operations. It is equipped with heavy power, ensuring it can handle the demands of any industrial business. The facility also features truck docks and overhead doors, facilitating easy loading and unloading of goods.

Call for Price

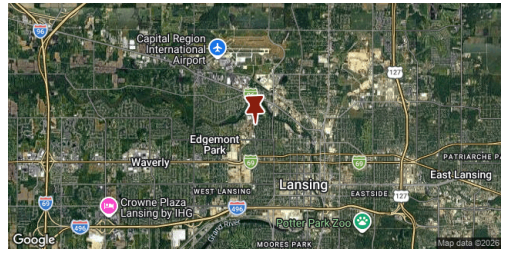
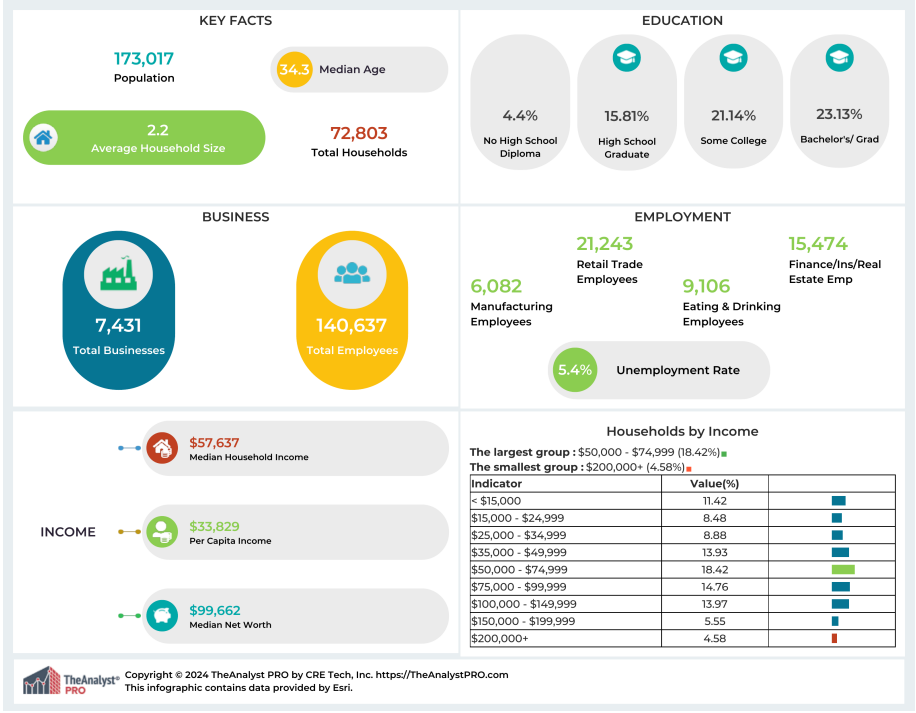
***Land Size: 3.80 Acres
Property Size: 48,000 Sq. Ft.
Year Built: 1947***

Contact:

313.312.5764

TREVOR BROOKS

License: 6501374378
t.brooks@kwcommercial.com



This information has been obtained from sources believed reliable. We have not verified it and make no guarantee, warranty or representation about it. Any projections, opinions, assumptions or estimates used are for example only and do not represent the current or future performance of the property. You and your advisors should conduct a careful, independent investigation of the property to determine to your satisfaction the suitability of the property for your needs. Photos herein are the property of their respective owners and use of these images without the express written consent of the owner is prohibited.

Contact:
313.312.5764
TREVOR BROOKS
 License: 6501374378
 t.brooks@kwcommercial.com