

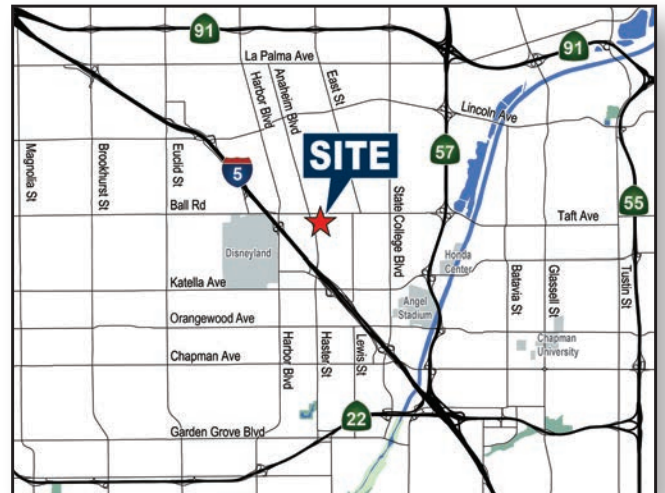
FOR SALE/LEASE | \approx 23,200 SF

1315 S. CLAUDINA STREET, ANAHEIM, CA



PROPERTY FEATURES

- \pm 3,200 SF of Office Space
- 3 Dock High Loading Doors
- 1 GL Loading Door
- 19' - 22' Warehouse Clear Height
- 400 Amps of Power (verify)
- Fire Sprinklered
- Fenced Yard
- Excellent Access to Multiple Freeways; Garden Grove (22), Santa Ana (5), Riverside (91), and Orange (57)



Voit
REAL ESTATE SERVICES

ZEHNER HILL
INDUSTRIAL GROUP

REED RUTTER
Senior Associate
949.933.5744
RRutter@voitco.com
Lic #02153762

ADAM HILL
Senior Vice President
714.935.2311
AHill@voitco.com
Lic #01970562

MIKE ZEHNER
Senior Vice President
714.935.2326
MCZehner@voitco.com
Lic #01917963

MITCH ZEHNER
Executive Vice President
714.935.2352
MZehner@voitco.com
Lic #00882464

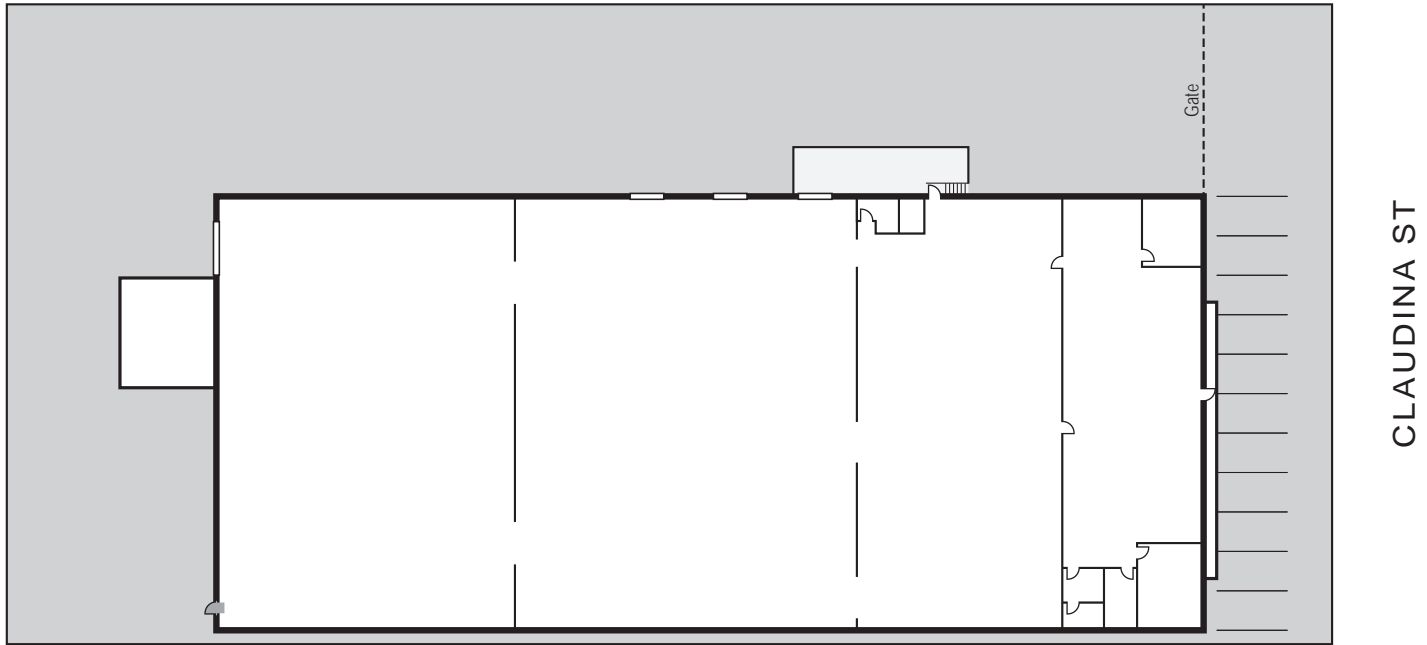
2020 Main Street, Suite 100 | Irvine, California 92614 | (949) 851-5100 | (949) 261-9092 FAX | Lic #01991785 | www.VoitCo.com

The information contained herein has been obtained from sources we deem reliable. While we have no reason to doubt its accuracy, we do not guarantee it. Licensed as Real Estate Salespersons by the DRE.
©2026 Voit Real Estate Services, Inc. All Rights Reserved. License #01991785.

FOR SALE/LEASE | ≈23,200 SF

1315 S. CLAUDINA STREET, ANAHEIM, CA

SITE PLAN



Voit
REAL ESTATE SERVICES

ZEHNER HILL
INDUSTRIAL GROUP

REED RUTTER
Senior Associate
949.933.5744
RRutter@voitco.com
Lic #02153762

ADAM HILL
Senior Vice President
714.935.2311
AHill@voitco.com
Lic #01970562

MIKE ZEHNER
Senior Vice President
714.935.2326
MCZehner@voitco.com
Lic #01917963

MITCH ZEHNER
Executive Vice President
714.935.2352
MZehner@voitco.com
Lic #00882464

2020 Main Street, Suite 100 | Irvine, California 92614 | (949) 851-5100 | (949) 261-9092 FAX | Lic #01991785 | www.VoitCo.com

The information contained herein has been obtained from sources we deem reliable. While we have no reason to doubt its accuracy, we do not guarantee it. Licensed as Real Estate Salespersons by the DRE.
©2026 Voit Real Estate Services, Inc. All Rights Reserved. License #01991785.