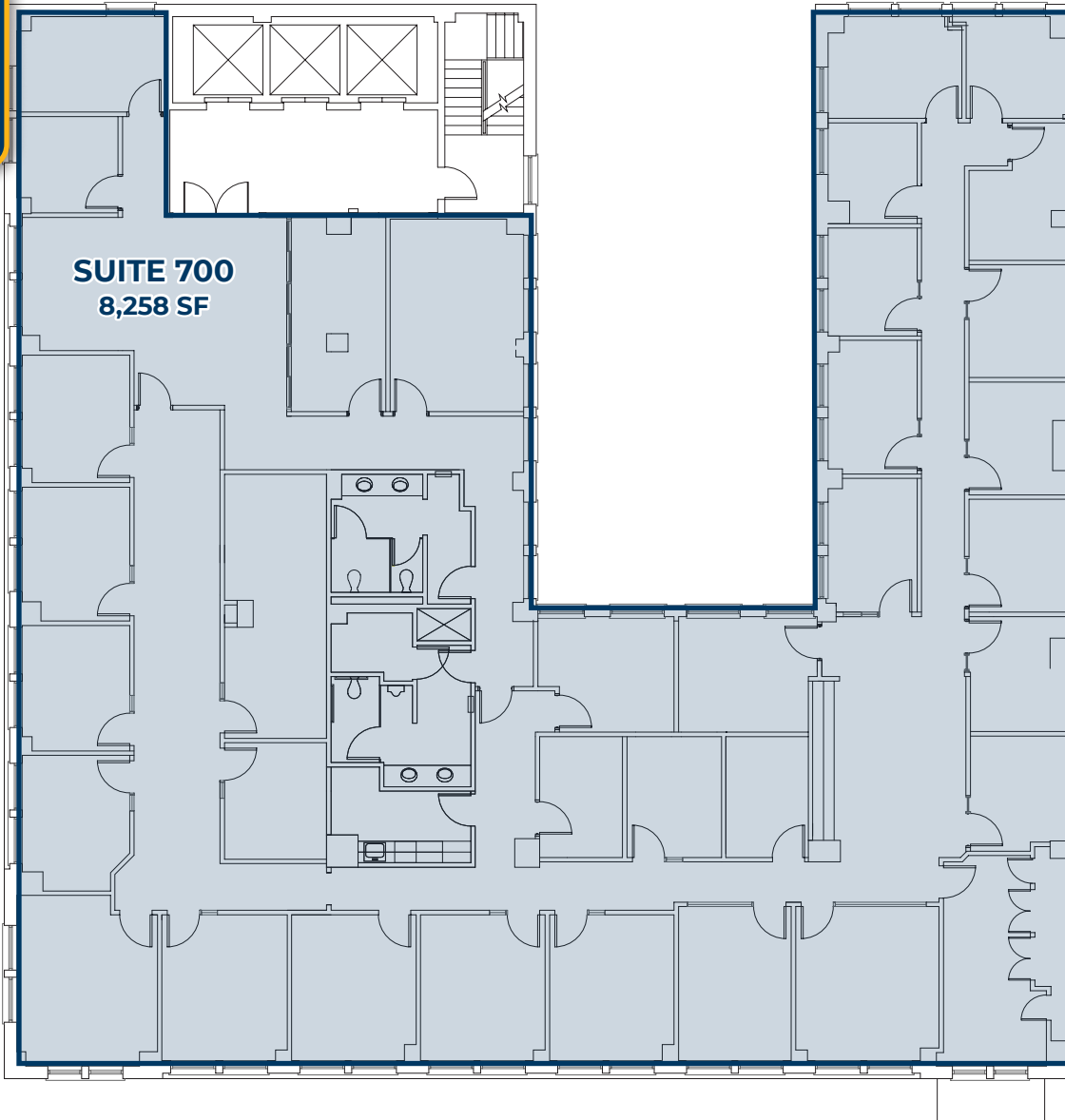




FLOOR PLAN



LEASE INFORMATION

Building	The Cascade Building
Address	520 SW 6th Ave, Portland, OR 97204
Floor	7th
Suite	700
Total SF	8,258 RSF

MCCOY DOERRIE, SIOR
Senior Vice President
503-523-7751

mccoy@capacitycommercial.com

JEFF FALCONER, SIOR
Principal

503-542-4346

jeff@capacitycommercial.com

GABRIEL BEHRMANN
Senior Associate Broker

971-237-2458

gabriel@capacitycommercial.com

