

# 2555

## KINGSTON ROAD

### YORK, PENNSYLVANIA

# FOR LEASE

## Office



# 1,402 SF

## AVAILABLE

### Contact:

Dan Hawks  
(717)-741-8707

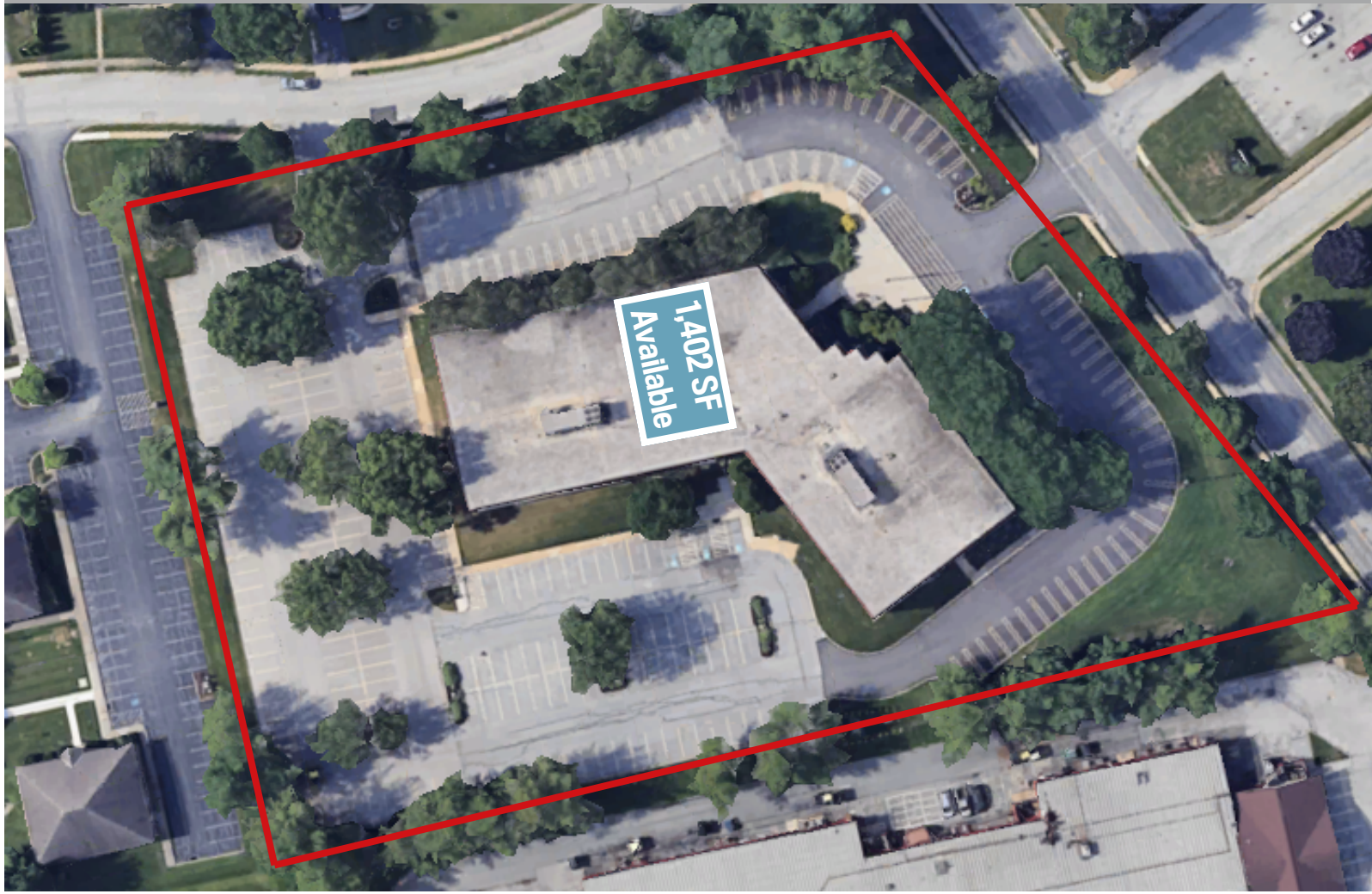
[dhawks@kinsleyproperties.com](mailto:dhawks@kinsleyproperties.com)

Joe Caughy  
(717)-741-8365

[jcaughy@kinsleyproperties.com](mailto:jcaughy@kinsleyproperties.com)

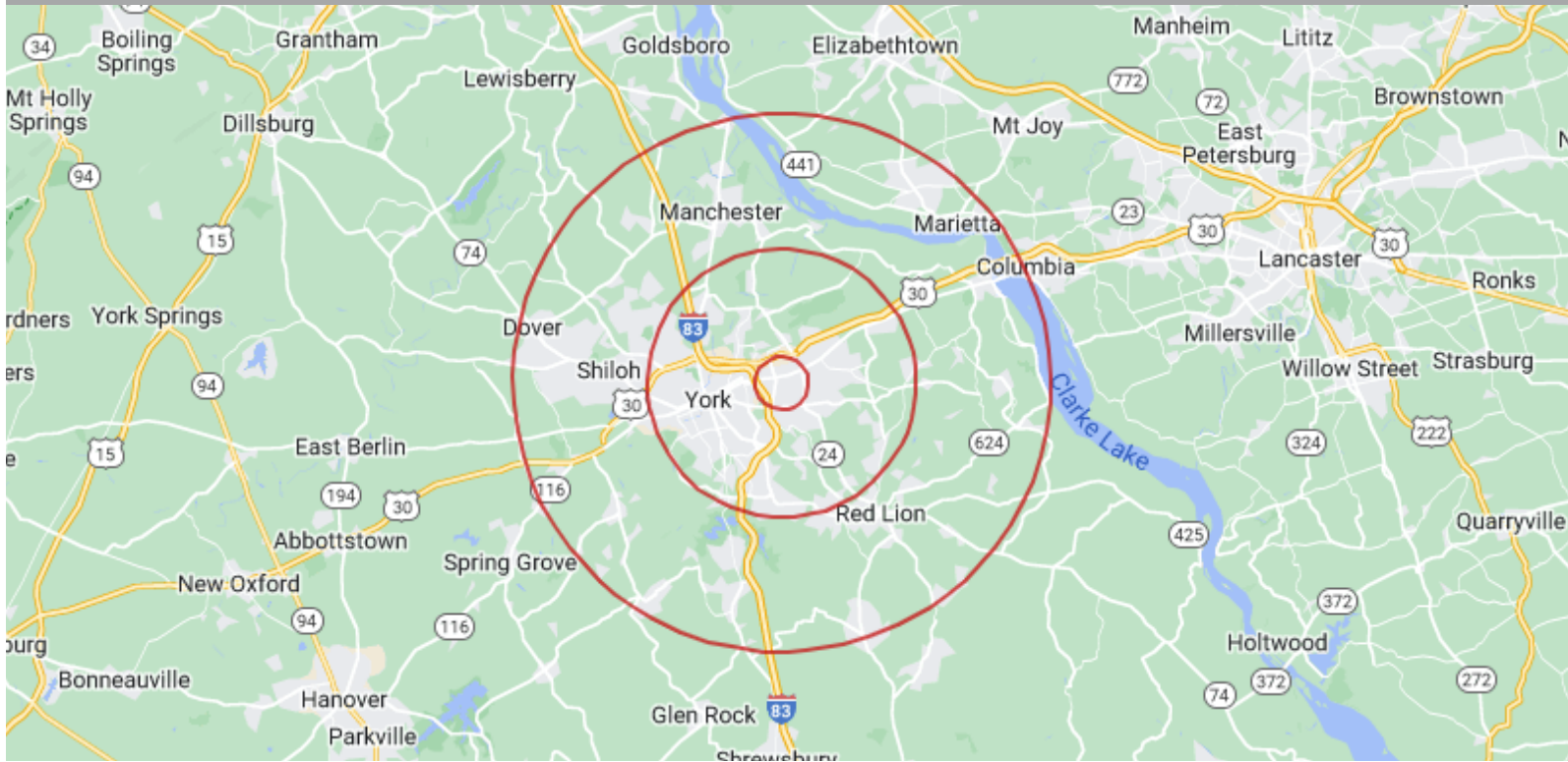
# KINSLEY

PROPERTIES



**Building Specifications:**

<b>Township</b>	Springettsbury Township	<b>Car Parking</b>	150 Spaces
<b>Zoning</b>	M-U	<b>Building Size</b>	53,206 SF
<b>Acreage</b>	4.64 AC	<b>Fire Protection</b>	Wet



### Distances to Cities:

Harrisburg, PA	28 miles	36 min
Baltimore, MD	53 miles	57 min
Philadelphia, PA	100 miles	2 hr
New York, NY	184 miles	3 hr 15 min.

### Labor Statistics:

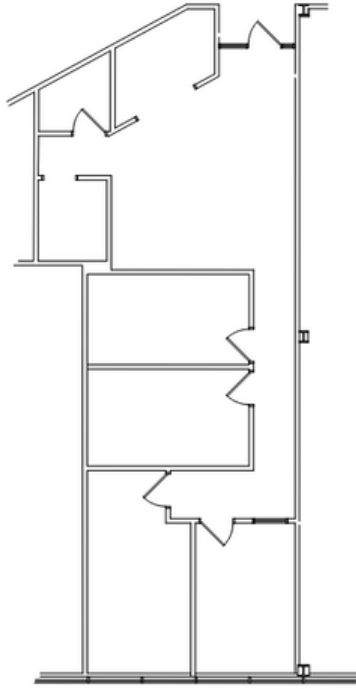
#### 1 Mile:

#### 5 Miles:

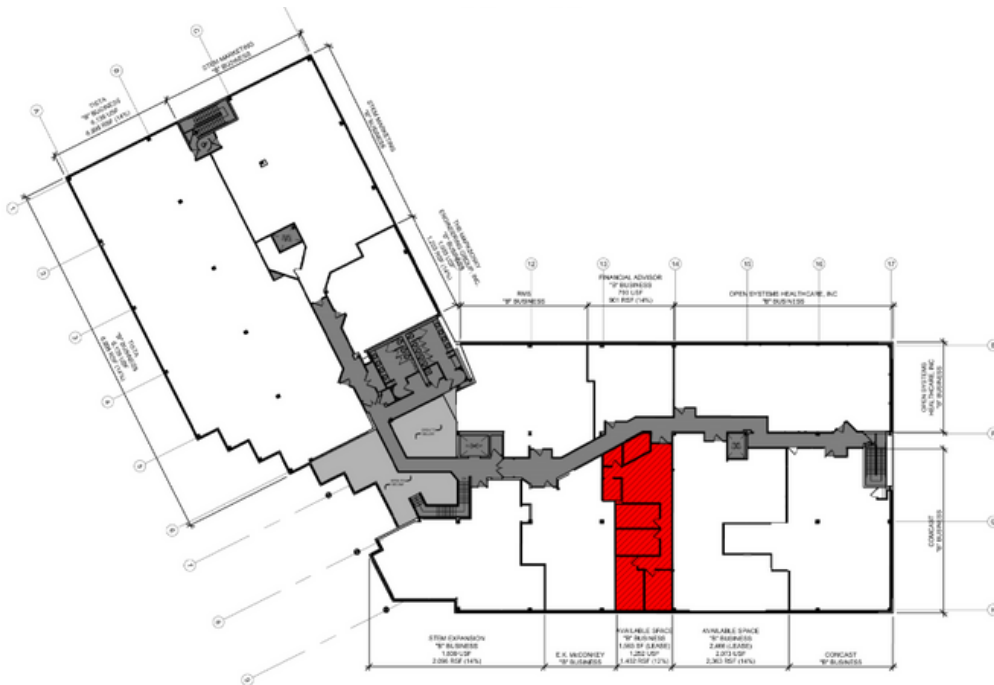
#### 10 Miles:

Total Population	9,055	147,648	290,780
Labor Population	10,017	84,685	125,067
Median Household Income	72,111	60,219	66,945

**YORK EXECUTIVE CENTER - SECOND FLOOR  
(2555 KINGSTON ROAD - SUITE 215, YORK, PA 17402)  
1,402 RSF - FLOOR PLAN  
"B" BUSINESS**



**YORK EXECUTIVE CENTER - SECOND FLOOR  
(2555 KINGSTON ROAD - SUITE 215, YORK, PA 17402)  
1,402 RSF - OVERALL FLOOR PLAN  
"B" BUSINESS**



# **KINSLEY** PROPERTIES

## **About Kinsley Properties**

Kinsley Properties is a privately held real estate development and management company. We develop new projects from the ground up and also acquire existing properties to hold long-term in our real estate investment portfolio. We develop and acquire different types of real estate in partnership with others or to be wholly owned. We have the capability, resources, and staff in order to facilitate and guide our clients through a successful real estate process. We work together with our clients in order to complete the entire real estate process from the beginning to the end. Starting from acquisition to development and design, construction, leasing, and asset management, we take pride in our product and work to provide all of these services in connection with the properties that are held in our portfolio. We have over 50 years of experience developing and managing a diverse portfolio of various property types across the mid-Atlantic region. We have a goal to provide solutions and high-quality customer service in order to ensure the success and growth of our clients, tenants, and partners. We believe in long-term relationships, collaboration, and teamwork because we are all in this together and we want to do what we can to ensure the entire team's success.

### **Mission:**

**WE PROVIDE REAL ESTATE SOLUTIONS THAT CREATE LASTING RELATIONSHIPS AND CLIENT SUCCESS.**

### **Vision:**

**BE THE MOST RESOURCEFUL REAL ESTATE EXPERT.**

### **Values:**

**OUR REPUTATION IS BUILT ON INTEGRITY.**

**WE DEVELOP PEOPLE.**

**WE'RE IN IT WITH YOU.**

**SHARED SUCCESS.**

**ALWAYS BE RESPONSIBLE.**



**DAN HAWKS**

Director of Leasing

[dhawks@kinsleyproperties.com](mailto:dhawks@kinsleyproperties.com)

717-741-8707



**JOE CAUGHY**

Leasing & Marketing Associate

[jcaughy@kinsleyproperties.com](mailto:jcaughy@kinsleyproperties.com)

717-741-8365

### **ADDRESS:**

6259 Reynolds Mill Road  
Seven Valleys, PA 17360